

Ileana Sonnabend: Ambassador for the New

The Museum of Modern Art, New York December 21, 2013-April 21, 2014
MoMA, 11w53, On View, 3rd Floor, Special Exhibitions



VITO ACCONCI (American, born 1940)

Seedbed

1972

Super 8 film transferred to video (color, silent), 11:46 minutes

Gift of the Julia Stoschek Foundation, Dusseldorf and Committee on Media Funds.
Exhibition copy courtesy Acconci Studio



VITO ACCONCI (American, born 1940)

Supply Room

1972

Super 8 film transferred to video (color, silent), 12:32 minutes

Courtesy Acconci Studio



VITO ACCONCI (American, born 1940)

Transference Zone

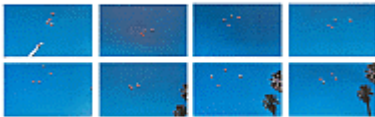
1972

Super 8 film transferred to video (color, silent), 8:31 minutes

Courtesy Acconci Studio



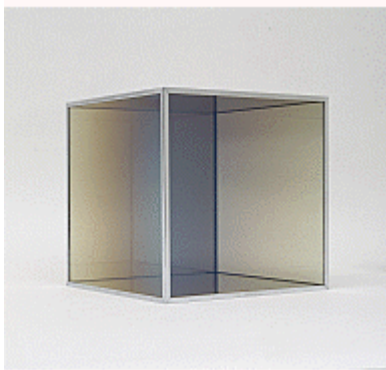
GIOVANNI ANSELMO (Italian, born 1934)
Senza titolo (Struttura che mangia)
 1968
 Granite, copper wire, lettuce, and sawdust
 25 9/16 x 11 13/16 x 11 13/16" (65 x 30 x 30 cm)
 Sonnabend Collection, on loan from Nina Sundell and Antonio Homem



JOHN BALDESSARI (American, born 1931)
Throwing Four Balls in the Air to Get a Square (Best of Thirty-Six Tries)
 1972–1973
 Eight color photographs on cardboard
 Each: 9 1/2 x 13 3/4" (24.1 x 34.9 cm)
 Emanuel Hoffmann Foundation, on permanent loan to the Öffentliche Kunstsammlung Basel



BERND BECHER (German, 1931–2007)
 HILLA BECHER (German, born 1934)
Winding Towers
 1966-97
 Nine gelatin silver prints
 68 1/4 x 56 1/4" (173.4 x 142.9 cm)
 The Museum of Modern Art, New York. Acquired in honor of Marie-Josée Kravis through the generosity of Robert B. Menschel



LARRY BELL (American, born 1939)
Shadows
 1967
 Partially silvered glass with chromium frame
 14 1/4" x 14 1/4" x 14 1/4" (36.2 x 36.2 x 36.2 cm)
 The Museum of Modern Art, New York. Gift of the artist (by exchange)



ASHLEY BICKERTON (British, born 1959)

Tormented Self-Portrait (Susie at Arles)

1987-88

Synthetic polymer paint, bronze powder and lacquer on wood, anodized aluminum, rubber, plastic, formica, leather, chrome-plated steel, and canvas
7' 5 3/8" x 68 3/4" x 15 3/4" (227.1 x 174.5 x 40 cm)

The Museum of Modern Art, New York. Purchase



MEL BOCHNER (American, born 1940)

Continuous/Dis/Continuous

1971-72

Pencil, red and black felt-tipped pens and blue carpenter's chalk on torn masking tape and wall

Approximately 2" (5.1 cm) high, length variable

The Museum of Modern Art, New York. Committee on Painting and Sculpture Funds



CHRISTIAN BOLTANSKI (French, born 1944)

Album de photos de la famille D., 1939-1964

1971

150 black-and-white photographs in tin frames with glass

Each: 7 7/8 x 11 13/16" (20 x 30 cm)

Collection Institut d'art contemporain, Rhône-Alpes



PIER PAOLO CALZOLARI (Italian, born 1943)

Non

1970

Eighteen tobacco leaves (twelve Virginia, six Kentucky), nine pure tin bars, nine fluorescent tubes (three cold white, 4,500 K; six warm white, 6,500 K), and nine transformers

57 x 204" (144.8 x 518.2 cm)

Sonnabend Collection, on loan from Nina Sundell and Antonio Homem



JIM DINE (American, born 1935)

Sickle

1962

Oil on canvas in artist's frame, steel, wood, stone, and string
51 3/8 x 40 15/16 x 3 15/16" (130.5 x 104 x 10 cm)

Toledo Museum of Art, Gift of Florence Scott Libbey, by exchange



CARROLL DUNHAM (American, born 1949)

Red Shape

1988

Mixed mediums on ragboard on panel
40 x 60" (101.6 x 152.4 cm)

Sonnabend Collection, on loan from Nina Sundell and Antonio Homem



PETER FISCHLI (Swiss, born 1952)

DAVID WEISS (Swiss, 1946–2012)

Animal

1986

Polyurethane, cheesecloth, paint
22 x 38 x 23" (55.9 x 96.5 x 58.4 cm)

Collection of the artists



SIMONE FORTI (American, born 1935)

Solo No. 1

1974

Video (black and white, sound)

18:40 min.

The Museum of Modern Art, New York. Purchase

On view March 16–April 21 as part of a programmed selection of video works distributed by Castelli-Sonnabend Tapes and Films



SIMONE FORTI (American, born 1935)

Three Grizzlies

1974

Video (black and white, sound)

17 min.

The Museum of Modern Art, New York. Purchase

On view March 16–April 21 as part of a programmed selection of video works distributed by Castelli-Sonnabend Tapes and Films



GILBERT & GEORGE (British)

Bloody Life No. 3

1975

Mixed mediums

97 x 81" (246.4 x 205.7 cm)

Sonnabend Collection, on loan from Nina Sundell and Antonio Homem



JAN GROOVER (American, 1943–2012)

Untitled

1978

Chromogenic color print

14 13/16 x 19 1/16" (37.7 x 48.4 cm)

The Museum of Modern Art, New York. Richard E. and Christie Calder Salomon Fund



JAN GROOVER (American, 1943–2012)

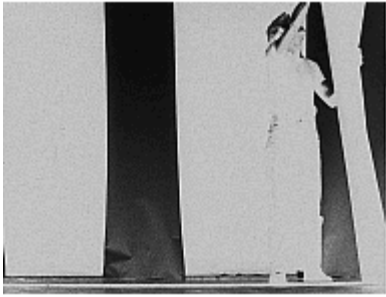
Untitled

1979

Chromogenic color print

18 3/4 x 14 3/4" (47.6 x 37.5 cm)

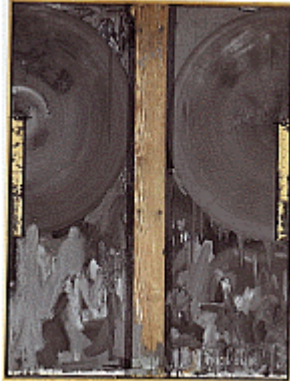
The Museum of Modern Art, New York. Acquired through the generosity of Celeste Bartos



DAVID HAXTON (American, born 1943)
Overlapping Planes
1974–1975
16mm film (black and white, silent), 8 min.

Courtesy the artist and Gavlak Gallery

On view December 21–January 31 as part of a programmed selection of film works distributed by Castelli-Sonnabend Tapes and Films



JASPER JOHNS (American, born 1930)
Device
1962

Oil on canvas with objects
40 x 30" (101.6 x 76.2 cm)

The Baltimore Museum of Art. Purchase with funds provided by The Dexter M. Ferry, Jr., Trustee Corporation Fund, and by Edith Ferry Hooper



JOAN JONAS (American, born 1936)

Songdelay

1973

16mm film transferred to video (black and white, sound)

18:35 min.

The Museum of Modern Art, New York. Acquired through the generosity of Barbara Wise

On view February 1–March 15 as part of a programmed selection of film works distributed by Castelli-Sonnabend Tapes and Films



JEFF KOONS (American, born 1955)

Pink Panther

1988

Porcelain on formica base

41 x 20 1/2 x 19" (104.1 x 52 x 48.2 cm)

The Museum of Modern Art, New York. Gift of Werner and Elaine Dannheisser



JANNIS KOUNELLIS (Greek, born 1936)
Da inventare sul posto
1972
Oil and graphite on canvas
97 1/4 x 118 1/8" (247 x 300 cm)
Rheingold Collection



ROY LICHTENSTEIN (American, 1923–1997)
Little Aloha
1962
Acrylic on canvas
44 1/16 x 42 1/8" (111.9 x 107 cm)
Sonnabend Collection, on loan from Nina Sundell and Antonio Homem



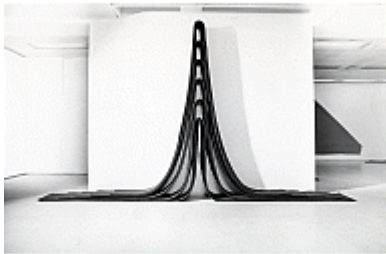
PIERO MANZONI (Italian, 1933–1963)
Line 1000 Meters Long
July 24, 1961
Chrome-plated metal drum containing a roll of paper with an ink line drawn along its 1000-meter length
20 1/4" (51.2 cm) x 15 3/8" (38.8 cm) diameter
The Museum of Modern Art, New York. Gift of Fratelli Fabbri Editori and purchase



JOHN MCCRACKEN (American, 1934–2011)
Green Plank
1968
Polyester resin, fiberglass, and plywood
94 1/4 x 14 1/8 x 1 1/4" (239.4 x 35.9 x 3.2 cm)
Glenstone



MARIO MERZ (Italian, 1925–2003)
Igloo Fibonacci
1970
Brass, steel, marble, and adhesive tape
72 x 96 x 96" (182.9 x 243.8 x 243.8 cm)
Kunstmuseum Wolfsburg



ROBERT MORRIS (American, born 1931)
Untitled (Black Felt)
c. 1969
Six strips of felt
108" (274.3 cm)
Component: 267" (678.2 cm)
Solomon R. Guggenheim Museum, New York, Panza Collection 1991

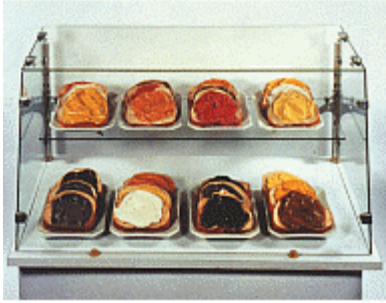


BRUCE NAUMAN (American, born 1941)
Thighing (Blue)
1967
16mm film transferred to video (color, sound)
4:36 min.
The Museum of Modern Art, New York. Gift of Jerry I. Speyer and Katherine G. Farley, Anna Marie and Robert F. Shapiro, and Marie-Josée and Henry R. Kravis

On view March 16–April 21 as part of a programmed selection of film works distributed by Castelli-Sonnabend Tapes and Films



BRUCE NAUMAN (American, born 1941)
Silver Livres
1974
Neon tubing with clear glass tubing suspension frame
11 7/8 x 19 9/16 x 2 3/4" (30.2 x 49.7 x 7 cm)
Collection Ealan and Melinda Wingate



CLAES OLDENBURG (American, born Sweden 1929)

Tartines

1964

Plaster painted with tempera on porcelain plates, glass-and-metal case
15 1/4 x 32 1/4 x 17 3/4" (38.7 x 81.9 x 45.1 cm)

Collection Martin Z. Margulies



CHARLEMAGNE PALESTINE

Internal Tantrum

1975

Video, 7:35 minutes, sound

Courtesy Electronic Arts Intermix (EAI), New York

On view February 1–March 15 as part of a programmed selection of video works distributed by Castelli-Sonnabend Tapes and Films



A.R. PENCK (RALF WINKLER) (German, born 1939)

Welt des Adlers IV

1981

Acrylic on canvas

70 7/8 x 110 1/4" (180 x 280 cm)

Courtesy Michael Werner Gallery, New York and London



MICHELANGELO PISTOLETTO (Italian, born 1933)

Due Persone

1963–1964

Graphite and oil on cut transparent paper mounted on polished stainless steel
78 3/4 x 47 1/4" (200 x 120 cm)

The Menil Collection, Houston



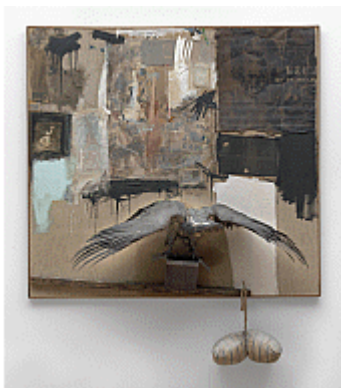
ROBERT RAUSCHENBERG (American, 1925–2008)

Rhyme

1956

Fabrics, necktie, paper, oil, enamel, pencil and synthetic polymer paint on canvas
48 1/4 x 41 1/8" (122.6 x 104.4 cm)

The Museum of Modern Art, New York. Fractional and promised gift of Agnes Gund in honor of Richard E. Oldenburg



ROBERT RAUSCHENBERG (American, 1925–2008)

Canyon

1959

Oil, pencil, paper, metal, photograph, fabric, wood, canvas, buttons, mirror, taxidermied eagle, cardboard, pillow, paint tube and other materials
81 3/4 x 70 x 24" (207.6 x 177.8 x 61 cm)

The Museum of Modern Art, New York. Gift of the family of Ileana Sonnabend



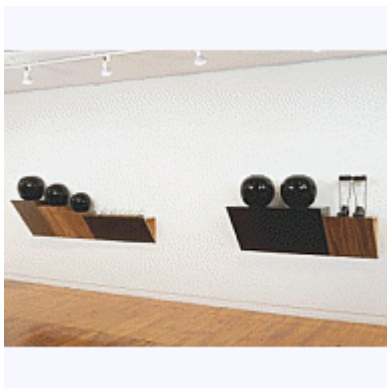
JAMES ROSENQUIST (American, born 1933)

Volunteer

1964

Oil on canvas
72 x 78" (182.9 x 198.1 cm)

The Art Institute of Chicago. Through prior acquisitions of Mary and Leigh Block, Samuel P. Avery Endowment, and Mr. and Mrs. Carter H. Harrison; Robert and Marlene Baumgarten Fund; estate of Solomon Byron Smith; Constance Obright and Samuel and Sarah Deson Memorial funds



HAIM STEINBACH (born 1944)

code of silence #2

1986

Two plastic-laminated wood shelves, five ceramic vases, two brass-and-wood coat racks, and one pair of leather shoes attached to metal leg braces
35 1/2 x 195 1/2 x 18" (90.2 x 496.6 x 45.7 cm)

Vanmoerkerke Collection, Belgium



HIROSHI SUGIMOTO (Japanese, born 1948)
Hyena-Jackal-Vulture
1976
Gelatin silver print
20 x 24" (50.8 x 61 cm)
Private collection



HIROSHI SUGIMOTO (Japanese, born 1948)
Polar Bear
1976
Gelatin silver print
20 x 24" (50.8 x 61 cm)
Private collection



HIROSHI SUGIMOTO (Japanese, born 1948)
Canadian Lynx
1980
Gelatin silver print
20 x 24" (50.8 x 61 cm)
Private collection



ANDY WARHOL (American, 1928–1987)
1947 White
1963
Silkscreen ink and pencil on linen
121 x 78" (307.3 x 198.1 cm)
The Andy Warhol Museum, Pittsburgh; Founding Collection, Contribution Dia Center for the Arts



ANDY WARHOL (American, 1928–1987)

Ileana Sonnabend

1973

Acrylic and silkscreen ink on canvas, two panels
40 x 80" (101.6 x 203.2 cm)

The Sonnabend Collection

WILLIAM WEGMAN (American, born 1943)

Elbows

1970-1971

Video (black and white, sound)

1:46 min.

The Museum of Modern Art, New York. Gift of the artist

On view December 21–January 31 as part of a programmed selection of video works distributed by Castelli-Sonnabend Tapes and Films

WILLIAM WEGMAN (American, born 1943)

Stomach Song

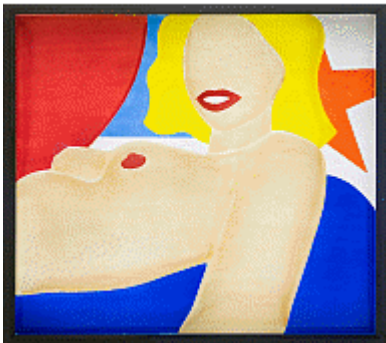
1970-1971

Video (black and white, sound)

1:20 min.

The Museum of Modern Art, New York. Gift of the artist

On view December 21–January 31 as part of a programmed selection of video works distributed by Castelli-Sonnabend Tapes and Films



TOM WESSELMANN (American, 1931–2004)

Great American Nude #75

1965

Illuminated painted molded plastic
48 x 54 x 5" (121.9 x 137.2 x 12.7 cm)

Claire Wesselmann



TERRY WINTERS (American, born 1949)
Schema (41)
1985–1986
Watercolor and gouache on paper
12 1/8 x 8 5/8" (30.8 x 21.9 cm)
Courtesy Terry Winters and Matthew Marks Gallery



TERRY WINTERS (American, born 1949)
Schema (46)
1985–1986
Graphite on paper
12 1/8 x 8 5/8" (30.8 x 21.9 cm)
Courtesy Terry Winters and Matthew Marks Gallery



TERRY WINTERS (American, born 1949)
Schema (47)
1985–1986
Gouache and graphite on paper
12 1/8 x 8 5/8" (30.8 x 21.9 cm)
Courtesy Terry Winters and Matthew Marks Gallery



TERRY WINTERS (American, born 1949)
Schema (55)
(1985-86)
Watercolor, gouache, and graphite on paper
12 1/8 x 8 5/8" (30.7 x 21.9 cm)
The Museum of Modern Art, New York. Gift of Lily Auchincloss (by exchange) and of Richard E. Salomon



TERRY WINTERS (American, born 1949)
Schema (57)
1985–1986
Graphite and watercolor on paper
12 1/8 x 8 5/8" (30.8 x 21.9 cm)
Courtesy Terry Winters and Matthew Marks Gallery



TERRY WINTERS (American, born 1949)
Schema (63)
(1985-86)
Oilstick and graphite on paper
12 x 8 5/8" (30.4 x 21.9 cm)
The Museum of Modern Art, New York. Gift of Lily Auchincloss (by exchange) and of Richard E. Salomon



GILBERTO ZORIO (Italian, born 1944)
Macchia II
1968
Rubber, rope
Dimensions variable
Solomon R. Guggenheim Museum, New York