

Andy Warhol: Campbell's Soup Cans and Other Works, 1953-1967

The Museum of Modern Art, New York April 25, 2015–October 12, 2015
MoMA, 11w53, On View, 2nd Floor, Prints Galleries



VARIOUS ARTISTS (Various)
JOAN MITCHELL (American, 1925–1992)
KAREL APPEL (Dutch, 1921–2006)
KIKI (KIKI O. K.) KOGELNIK (Austrian, born 1935)
ENRICO BAJ (Italian, 1924–2003)
ALAN DAVIE (British, 1920–2014)
JIM DINE (American, born 1935)
ÖYVIND FAHLSTRÖM (Swedish, born Brazil. 1928–1976)
ROBERT INDIANA (American, born 1928)
ALFRED JENSEN (American, 1903–1981)
ASGER JORN (Danish, 1914–1973)
ALLAN KAPPROW
PIERRE ALECHINSKY (Belgian, born 1927)
ROY LICHTENSTEIN (American, 1923–1997)
TOM WESSELMANN (American, 1931–2004)
CLAES OLDENBURG (American, born Sweden 1929)
MEL RAMOS (American, born 1935)
ROBERT RAUSCHENBERG (American, 1925–2008)
JEAN-PAUL RIOPELLE (Canadian, 1923–2002)
JAMES ROSENQUIST (American, born 1933)
ANTONIO SAURA (Spanish, 1930–1998)
KIMBER SMITH (American, 1922–1981)
WALASSE TING (American, 1929–2010)
BRAM VAN VELDE (Dutch, 1895–1981)
ANDY WARHOL (American, 1928–1987)
ALFRED LESLIE (American, born 1927)
SAM FRANCIS (American, 1923–1994)
K.R.H. SONDERBORG (Danish, born 1923)

1¢ Life

1964

Illustrated book with 62 lithographs and reproductions
composition (see child records): dimensions vary; page (each irreg.): 16 1/8 ×
11 7/16" (41 × 29 cm)

The Museum of Modern Art, New York. Gift of the author, Walasse Ting, the
editor, Sam Francis, and the publisher, E. W. Kornfeld



ANDY WARHOL (American, 1928–1987)

Untitled (Roy Rogers)

(c. 1948)

Pencil on paper

11 x 8 1/2" (28 x 22 cm)

The Museum of Modern Art, New York. Chief Curator Discretionary Fund

ANDY WARHOL (American, 1928–1987)
Cover from À la recherche du shoe perdu

c. 1955

One from a portfolio of eighteen offset lithographs with synthetic dye-based ink additions

sheet (folded): 20 1/16 × 13 1/16" (51 × 33.2 cm); sheet (unfolded): 20 1/16 × 26 1/8" (51 × 66.3 cm)

The Museum of Modern Art, New York. The Print Associates Fund



ANDY WARHOL (American, 1928–1987)
Untitled from À la recherche du shoe perdu

c. 1955

One from a portfolio of eighteen offset lithographs with synthetic dye-based ink additions

sheet: 9 3/4 × 13 11/16" (24.7 × 34.8 cm)

The Museum of Modern Art, New York. The Print Associates Fund



ANDY WARHOL (American, 1928–1987)
Untitled from À la recherche du shoe perdu

c. 1955

One from a portfolio of eighteen offset lithographs with synthetic dye-based ink additions

sheet: 9 3/4 × 13 11/16" (24.7 × 34.8 cm)

The Museum of Modern Art, New York. The Print Associates Fund



ANDY WARHOL (American, 1928–1987)
Untitled from À la recherche du shoe perdu

c. 1955

One from a portfolio of eighteen offset lithographs with synthetic dye-based ink additions

sheet: 9 3/4 × 13 11/16" (24.7 × 34.8 cm)

The Museum of Modern Art, New York. The Print Associates Fund



ANDY WARHOL (American, 1928–1987)
Untitled from À la recherche du shoe perdu

c. 1955

One from a portfolio of eighteen offset lithographs with synthetic dye-based ink additions

sheet: 9 3/4 × 13 11/16" (24.7 × 34.8 cm)

The Museum of Modern Art, New York. The Print Associates Fund



ANDY WARHOL (American, 1928–1987)
Untitled from À la recherche du shoe perdu

c. 1955

One from a portfolio of eighteen offset lithographs with synthetic dye-based ink additions

sheet: 9 3/4 × 13 11/16" (24.7 × 34.8 cm)

The Museum of Modern Art, New York. The Print Associates Fund



ANDY WARHOL (American, 1928–1987)
Untitled from À la recherche du shoe perdu

c. 1955

One from a portfolio of eighteen offset lithographs with synthetic dye-based ink additions

sheet: 9 3/4 × 13 11/16" (24.7 × 34.8 cm)

The Museum of Modern Art, New York. The Print Associates Fund



ANDY WARHOL (American, 1928–1987)
Untitled from À la recherche du shoe perdu

c. 1955

One from a portfolio of eighteen offset lithographs with synthetic dye-based ink additions

sheet: 9 3/4 × 13 11/16" (24.7 × 34.8 cm)

The Museum of Modern Art, New York. The Print Associates Fund



ANDY WARHOL (American, 1928–1987)
Untitled from À la recherche du shoe perdu
c. 1955

One from a portfolio of eighteen offset lithographs with synthetic dye-based ink additions
sheet: 9 3/4 × 13 11/16" (24.7 × 34.8 cm)
The Museum of Modern Art, New York. The Print Associates Fund



ANDY WARHOL (American, 1928–1987)
Untitled from À la recherche du shoe perdu
c. 1955

One from a portfolio of eighteen offset lithographs with synthetic dye-based ink additions
sheet: 9 3/4 × 13 11/16" (24.7 × 34.8 cm)
The Museum of Modern Art, New York. The Print Associates Fund



ANDY WARHOL (American, 1928–1987)
Untitled from À la recherche du shoe perdu
c. 1955

One from a portfolio of eighteen offset lithographs with synthetic dye-based ink additions
sheet: 9 3/4 × 13 11/16" (24.7 × 34.8 cm)
The Museum of Modern Art, New York. The Print Associates Fund



ANDY WARHOL (American, 1928–1987)
Untitled from À la recherche du shoe perdu
c. 1955

One from a portfolio of eighteen offset lithographs with synthetic dye-based ink additions
sheet: 9 3/4 × 13 11/16" (24.7 × 34.8 cm)
The Museum of Modern Art, New York. The Print Associates Fund



ANDY WARHOL (American, 1928–1987)
Untitled from À la recherche du shoe perdu
c. 1955

One from a portfolio of eighteen offset lithographs with synthetic dye-based ink additions
sheet: 9 3/4 × 13 11/16" (24.7 × 34.8 cm)
The Museum of Modern Art, New York. The Print Associates Fund



ANDY WARHOL (American, 1928–1987)
Untitled from À la recherche du shoe perdu
c. 1955

One from a portfolio of eighteen offset lithographs with synthetic dye-based ink additions
sheet (unfolded): 25 × 19" (63.5 × 48.3 cm)
The Museum of Modern Art, New York. The Print Associates Fund



ANDY WARHOL (American, 1928–1987)
RALPH THOMAS WARD (CORKIE)
Untitled from A is an Alphabet
1953

One from a portfolio of 26 offset lithographs
composition: 8 11/16 x 4 5/16" (22 x 11 cm); sheet: 9 7/16 x 6" (24 x 15.2 cm)
The Museum of Modern Art, New York. Gift of Gabriel Austin



ANDY WARHOL (American, 1928–1987)
RALPH THOMAS WARD (CORKIE)
Untitled from A is an Alphabet
1953

One from a portfolio of 26 offset lithographs
composition: 5 15/16 x 4 5/16" (15.1 x 11 cm); sheet: 9 7/16 x 6" (24 x 15.2 cm)
The Museum of Modern Art, New York. Gift of Gabriel Austin



ANDY WARHOL (American, 1928–1987)

RALPH THOMAS WARD (CORKIE)

Untitled from A is an Alphabet

1953

One from a portfolio of 26 offset lithographs

composition: 3 1/4 x 4" (8.3 x 10.2 cm); sheet: 9 3/8 x 5 7/8" (23.8 x 15 cm)

The Museum of Modern Art, New York. Gift of Gabriel Austin



ANDY WARHOL (American, 1928–1987)

RALPH THOMAS WARD (CORKIE)

Untitled from A is an Alphabet

1953

One from a portfolio of 26 offset lithographs

composition: 8 9/16 x 3 7/8" (21.8 x 9.8 cm); sheet: 9 7/16 x 6" (24 x 15.2 cm)

The Museum of Modern Art, New York. Gift of Gabriel Austin



ANDY WARHOL (American, 1928–1987)

RALPH THOMAS WARD (CORKIE)

Untitled from A is an Alphabet

1953

One from a portfolio of 26 offset lithographs

composition: 9 x 4 1/2" (22.8 x 11.5 cm); sheet: 9 7/16 x 5 15/16" (24 x 15.1 cm)

The Museum of Modern Art, New York. Gift of Gabriel Austin



ANDY WARHOL (American, 1928–1987)

RALPH THOMAS WARD (CORKIE)

Untitled from A is an Alphabet

1953

One from a portfolio of 26 offset lithographs

composition: 6 7/16 x 5 1/8" (16.3 x 13 cm); sheet: 9 7/16 x 6" (24 x 15.2 cm)

The Museum of Modern Art, New York. Gift of Gabriel Austin



ANDY WARHOL (American, 1928–1987)

A Gold Book

1957

Illustrated book with twenty offset lithographs, five with synthetic dye-based ink additions

page (each): dimensions vary; overall (closed): 14 1/2 × 11 5/8 × 1/4" (36.8 × 29.5 × 0.7 cm)

The Museum of Modern Art, New York. Gift of Russell Lynes



ANDY WARHOL (American, 1928–1987)

Unknown Female

(c. 1957)

Metallic leaf and ink on paper

23 1/8 x 15 1/2" (58.7 x 39.4 cm)

The Museum of Modern Art, New York. Gift of Sarah-Ann and Werner H. Kramarsky



ANDY WARHOL (American, 1928–1987)

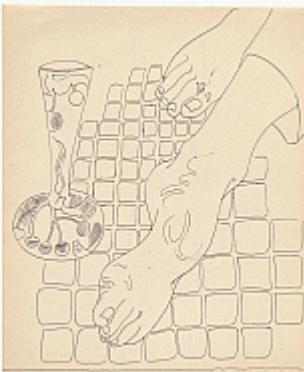
Untitled (Unknown Male)

(c. 1957)

Ballpoint pen on paper

16 3/4 x 13 7/8" (42.5 x 35.3 cm)

The Museum of Modern Art, New York. Purchase through the Vincent D'Aquila and Harry Soviak Bequest Fund



ANDY WARHOL (American, 1928–1987)

Untitled (Feet)

(c. 1958)

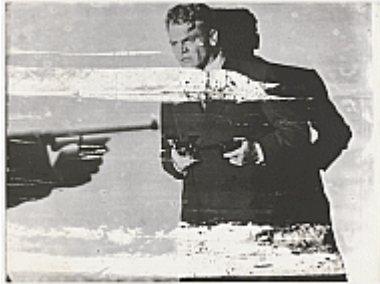
Ballpoint pen on paper

16 3/4 x 13 7/8" (42.9 x 45.4 cm)

The Museum of Modern Art, New York. Purchased with funds provided by the Vincent D'Acquila Drawings Fund



ANDY WARHOL (American, 1928–1987)
Water Heater
 1961
 Casein on canvas
 44 3/4 x 40" (113.6 x 101.5 cm)
 The Museum of Modern Art, New York. Gift of Roy Lichtenstein



ANDY WARHOL (American, 1928–1987)
Cagney
 1962
 Screenprint
 30 x 40" (76.2 x 101.6 cm)
 The Museum of Modern Art, New York. Partial and promised gift of UBS



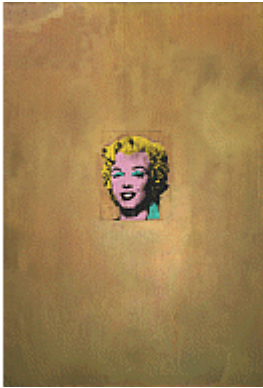
ANDY WARHOL (American, 1928–1987)
Campbell's Soup Can (Tomato)
 (c. 1962)
 Pencil on notebook paper
 18 x 12" (45.8 x 30.5 cm)
 The Museum of Modern Art, New York. Purchased with funds provided by Marie-Josée and Henry R. Kravis



ANDY WARHOL (American, 1928–1987)
Campbell's Soup Cans
 1962
 Synthetic polymer paint on thirty-two canvases
 Each canvas 20 x 16" (50.8 x 40.6 cm)
 The Museum of Modern Art, New York. Partial gift of Irving Blum
 Additional funding provided by Nelson A. Rockefeller Bequest, gift of Mr. and Mrs. William A. M. Burden, Abby Aldrich Rockefeller Fund, gift of Nina and Gordon Bunshaft in honor of Henry Moore, Lillie P. Bliss Bequest, Philip Johnson Fund, Frances R. Keech Bequest, gift of Mrs. Bliss Parkinson, and Florence B. Wesley Bequest (all by exchange)



ANDY WARHOL (American, 1928–1987)
Coca-Cola
(1962)
Mimeograph stencil
14 x 9" (35.6 x 22.9 cm)
The Museum of Modern Art, New York. Purchase



ANDY WARHOL (American, 1928–1987)
Gold Marilyn Monroe
1962
Silkscreen ink on synthetic polymer paint on canvas
6' 11 1/4" x 57" (211.4 x 144.7 cm)
The Museum of Modern Art, New York. Gift of Philip Johnson



ANDY WARHOL (American, 1928–1987)
Roll of Bills
(1962)
Pencil, crayon, and felt-tip pen on paper
40 x 30" (101.6 x 76.2 cm)
The Museum of Modern Art, New York. Purchase



ANDY WARHOL (American, 1928–1987)
Saving Maytag
(1962)
Mimeograph stencil
14 x 9" (35.6 x 22.9 cm)
The Museum of Modern Art, New York. Purchase



ANDY WARHOL (American, 1928–1987)
Soup 'n sandwich!
(1962)
Mimeograph stencil
14 x 9" (35.6 x 22.9 cm)
The Museum of Modern Art, New York. Purchase



ANDY WARHOL (American, 1928–1987)
Two Dollar Bill
(1962)
Mimeograph stencil
9 x 14" (22.9 x 35.6 cm)
The Museum of Modern Art, New York. Purchase



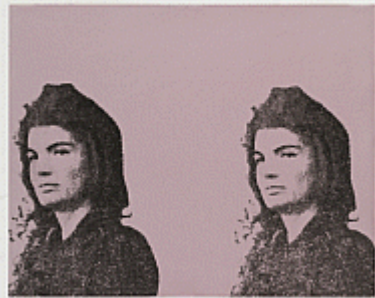
ANDY WARHOL (American, 1928–1987)
Untitled (City Text)
(c. 1962)
Pencil and gouache on paper
29 x 23" (73.7 x 58 cm)
The Museum of Modern Art, New York. Purchased with funds provided by The Edward John Noble Foundation and Purchase Fund



ANDY WARHOL (American, 1928–1987)
Double Elvis
1963
Silkscreen ink on synthetic polymer paint on canvas
6' 11" x 53" (210.8 x 134.6 cm)
The Museum of Modern Art, New York. Gift of the Jerry and Emily Spiegel Family Foundation in honor of Kirk Varnedoe



ANDY WARHOL (American, 1928–1987)
Jacqueline Kennedy I from 11 Pop Artists, Volume I
1965, published 1966
Screenprint from a portfolio of ten screenprints (one with collage additions),
and one lithograph
composition: 20 3/4 x 17 5/8" (52.7 x 44.8cm); sheet: 24 x 20" (61 x 50.8cm)
The Museum of Modern Art, New York. Gift of Original Editions



ANDY WARHOL (American, 1928–1987)
Jacqueline Kennedy II from 11 Pop Artists, Volume II
1965, published 1966
Screenprint from a portfolio of eleven screenprints, one with collage additions
composition: 24 x 29 15/16" (60.9 x 76.1cm); sheet: 24 x 30" (60.9 x 76.2 cm)
The Museum of Modern Art, New York. Gift of Original Editions



ANDY WARHOL (American, 1928–1987)
Jacqueline Kennedy III from 11 Pop Artists, Volume III
1965, published 1966
Screenprint
composition and sheet: 39 15/16 x 29 15/16" (101.5 x 76.1cm)
The Museum of Modern Art, New York. Gift of Original Editions



ANDY WARHOL (American, 1928–1987)
Self-Portrait
1966
Screenprint
composition: 22 1/16 x 20 13/16" (56 x 52.8cm); sheet: 23 1/16 x 22 15/16"
(58.6 x 58.3cm)
The Museum of Modern Art, New York. Gift of Philip Johnson



ANDY WARHOL (American, 1928–1987)

Self-Portrait

1966

Silkscreen ink on synthetic polymer paint on nine canvases

Each canvas 22 1/2 x 22 1/2" (57.2 x 57.2 cm), overall 67 5/8 x 67 5/8" (171.7 x 171.7 cm)

The Museum of Modern Art, New York. Gift of Philip Johnson



ANDY WARHOL (American, 1928–1987)

Untitled from Marilyn Monroe

1967

One from a portfolio of ten screenprints

composition and sheet: 36 x 36" (91.5 x 91.5 cm)

The Museum of Modern Art, New York. Gift of Mr. David Whitney



ANDY WARHOL (American, 1928–1987)

Untitled from Marilyn Monroe

1967

One from a portfolio of ten screenprints

composition and sheet: 36 x 36" (91.5 x 91.5 cm)

The Museum of Modern Art, New York. Gift of Mr. David Whitney



ANDY WARHOL (American, 1928–1987)

Untitled from Marilyn Monroe

1967

One from a portfolio of ten screenprints

composition and sheet: 36 x 36" (91.5 x 91.5 cm)

The Museum of Modern Art, New York. Gift of Mr. David Whitney



ANDY WARHOL (American, 1928–1987)

Untitled from Marilyn Monroe

1967

One from a portfolio of ten screenprints

composition and sheet: 36 x 36" (91.5 x 91.5 cm)

The Museum of Modern Art, New York. Gift of Mr. David Whitney



ANDY WARHOL (American, 1928–1987)

Untitled from Marilyn Monroe

1967

One from a portfolio of ten screenprints

composition and sheet: 36 x 36" (91.5 x 91.5 cm)

The Museum of Modern Art, New York. Gift of Mr. David Whitney



ANDY WARHOL (American, 1928–1987)

Untitled from Marilyn Monroe

1967

One from a portfolio of ten screenprints

composition and sheet: 36 x 36" (91.5 x 91.5 cm)

The Museum of Modern Art, New York. Gift of Mr. David Whitney



ANDY WARHOL (American, 1928–1987)

Untitled from Marilyn Monroe

1967

One from a portfolio of ten screenprints

composition and sheet: 36 x 36" (91.5 x 91.5 cm)

The Museum of Modern Art, New York. Gift of Mr. David Whitney



ANDY WARHOL (American, 1928–1987)

Untitled from Marilyn Monroe

1967

One from a portfolio of ten screenprints

composition and sheet: 36 x 36" (91.5 x 91.5 cm)

The Museum of Modern Art, New York. Gift of Mr. David Whitney



ANDY WARHOL (American, 1928–1987)

Untitled from Marilyn Monroe

1967

One from a portfolio of ten screenprints

composition and sheet: 36 x 36" (91.5 x 91.5 cm)

The Museum of Modern Art, New York. Gift of Mr. David Whitney



ANDY WARHOL (American, 1928–1987)

Untitled from Marilyn Monroe

1967

One from a portfolio of ten screenprints

composition and sheet: 36 x 36" (91.5 x 91.5 cm)

The Museum of Modern Art, New York. Gift of Mr. David Whitney