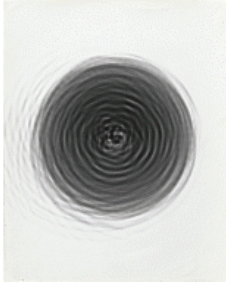


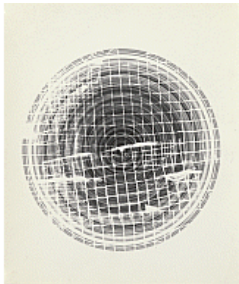
### XL: 19 New Acquisitions in Photography

The Museum of Modern Art, New York, May 10, 2013 - January 06, 2014

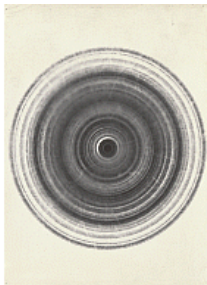
#### Gallery 1



BELA KOLÁROVÁ (Czech, 1923–2010)  
*Radiogram of Circle*  
1962-63  
Gelatin silver print  
9 9/16 x 7" (24.3 x 17.8 cm)  
Gift of Martin Helcl, Prague



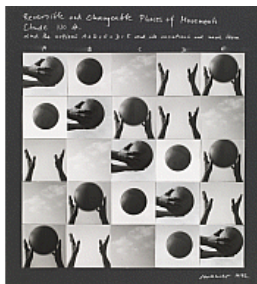
BELA KOLÁROVÁ (Czech, 1923–2010)  
*Radiogram of Circle*  
1962-63  
Gelatin silver print  
10 11/16 x 9 1/16" (27.1 x 23 cm)  
Gift of Martin Helcl, Prague



BELA KOLÁROVÁ (Czech, 1923–2010)  
*Radiogram of Circle*  
1962-63  
Gelatin silver print  
11 7/8 x 9 7/16" (30.1 x 24 cm)  
Gift of Martin Helcl, Prague



BELA KOLÁROVÁ (Czech, 1923–2010)  
*Radiogram of Circle*  
1962-63  
Gelatin silver print  
23 5/8 x 19 7/8" (60 x 50.5 cm)  
Acquired through the generosity of Marie-Josée Kravis



DÓRA MAURER (Hungarian, born 1937)  
*Reversible and Changeable Phases of Movement, Study No. 4*  
1972  
24 gelatin silver prints and graphite on paper  
21 5/8 x 19 11/16" (55 x 50 cm)  
Agnes Rindge Claflin Fund



DÓRA MAURER (Hungarian, born 1937)  
*Tracing Space I, Tracing Space II, and Plan*  
 1979

Gelatin silver prints on cardboard and graphite on paper  
 (.a): 27 1/2 x 39 7/16" (69.9 x 100.1 cm)  
 (.b): 27 1/2 x 39 7/16" (69.9 x 100.1 cm)  
 (.c): 11 3/4 x 15 11/16" (29.8 x 39.9 cm)

Agnes Rindge Claflin Fund



ROBERT FRANK (American, born Switzerland 1924)  
*Andrea, Mabou*  
 1976-78

Gelatin silver print  
 18 1/8 x 13 3/4" (46 x 35 cm) (irregular)  
 Gift of Robert and Gayle Greenhill



ROBERT FRANK (American, born Switzerland 1924)  
*Mabou*  
 1977

(wo-words on clothesline)  
 Gelatin silver print  
 7 5/16 x 19 5/16" (18.5 x 49 cm)  
 Gift of Robert and Gayle Greenhill



ROBERT FRANK (American, born Switzerland 1924)  
*Los Angeles--February 4th--I Wake Up--Turn On TV*  
 1979

Gelatin silver print  
 19 11/16 x 14" (50 x 35.5 cm)  
 Gift of Robert and Gayle Greenhill



ROBERT FRANK (American, born Switzerland 1924)  
*St. Rita's Hospital #401, Sydney, Nova Scotia*  
 January 20, 1991

Gelatin silver print  
 22 13/16 x 19 1/2" (57.9 x 49.5 cm)  
 Gift of Robert and Gayle Greenhill



ROBERT FRANK (American, born Switzerland 1924)  
*Today Is My Daughter's Birthday, Hokkaido, Tokyo*  
1994  
Gelatin silver prints  
19 3/4 x 31 5/8" (50.2 x 80.3 cm)  
Gift of Robert and Gayle Greenhill



ROBERT FRANK (American, born Switzerland 1924)  
*Find Your Roots--Explain My Roots*  
1997  
Gelatin silver print  
19 5/16 x 27 9/16" (49 x 70 cm)  
Gift of Robert and Gayle Greenhill



ROBERT FRANK (American, born Switzerland 1924)  
1998  
Gelatin silver print  
14 15/16 x 22 11/16" (38 x 57.7 cm)  
Gift of Robert and Gayle Greenhill

## Gallery 2



STEPHEN SHORE (American, born 1947)  
*4-Part Variation*  
1969  
32 gelatin silver prints, printed 2013  
Each 5 x 7" (12.7 x 17.8 cm)  
Acquired through the generosity of Robert B. Menschel



STEPHEN SHORE (American, born 1947)  
*Merced River, Yosemite National Park, California*  
August 13, 1979  
Chromogenic color print, printed 2013  
35 7/8 x 44 15/16" (91.2 x 114.2 cm)  
Gift of the artist



STEPHEN SHORE (American, born 1947)  
*Chicago, Illinois*  
July 1972  
Chromogenic color print, printed 2013  
5 x 7 1/2" (12.7 x 19.1 cm)  
Gift of the artist



STEPHEN SHORE (American, born 1947)  
*Clovis, New Mexico*  
June 1972  
Chromogenic color print, printed 2013  
5 x 7 1/2" (12.7 x 19.1 cm)  
Gift of the artist



STEPHEN SHORE (American, born 1947)  
*Clovis, New Mexico*  
June 1972  
Chromogenic color print, printed 2013  
5 x 7 1/2" (12.7 x 19.1 cm)  
Gift of the artist



STEPHEN SHORE (American, born 1947)  
*Meridian, Mississippi*  
June 1972  
Chromogenic color print, printed 2013  
5 x 7 1/2" (12.7 x 19.1 cm)  
Gift of the artist



STEPHEN SHORE (American, born 1947)  
*Normal, Illinois*  
July 1972  
Chromogenic color print, printed 2013  
5 x 7 1/2" (12.7 x 19.1 cm)  
Acquired through the generosity of Robert B. Menschel



STEPHEN SHORE (American, born 1947)  
*Pontiac, Michigan*  
July 1972  
Chromogenic color print, printed 2013  
5 x 7 1/2" (12.7 x 19.1 cm)  
Acquired through the generosity of Robert B. Menschel



STEPHEN SHORE (American, born 1947)  
*Sante Fe, New Mexico*  
June 1972  
Chromogenic color print, printed 2013  
5 x 7 1/2" (12.7 x 19.1 cm)  
Acquired through the generosity of Robert B. Menschel



STEPHEN SHORE (American, born 1947)  
*Memphis, Tennessee*  
December 1973  
Chromogenic color print, printed 2013  
5 x 7 1/2" (12.7 x 19.1 cm)  
Acquired through the generosity of Robert B. Menschel



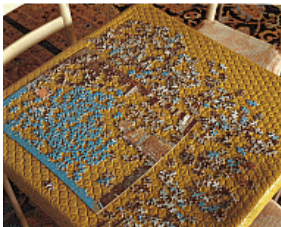
STEPHEN SHORE (American, born 1947)  
*New York, New York*  
August 1972  
Chromogenic color print, printed 2013  
5 x 7 1/2" (12.7 x 19.1 cm)  
Acquired through the generosity of Robert B. Menschel



STEPHEN SHORE (American, born 1947)  
*Room 125, Westbank Motel, Idaho Falls, Idaho*  
July 18, 1973  
Chromogenic color print, printed 2013  
17 x 21 3/4" (43.2 x 55.2 cm)  
Acquired through the generosity of Thomas and Susan Dunn



STEPHEN SHORE (American, born 1947)  
*Fifth Street and Broadway, Eureka, California*  
September 2, 1974  
Chromogenic color print, printed 2013  
17 x 21 3/4" (43.2 x 55.2 cm)  
Acquired through the generosity of an anonymous donor



STEPHEN SHORE (American, born 1947)  
*Lookout Hotel, Ogunquit, Maine*  
July 16, 1974  
Chromogenic color print, printed 2013  
17 x 21 3/4" (43.2 x 55.2 cm)  
Acquired through the generosity of an anonymous donor



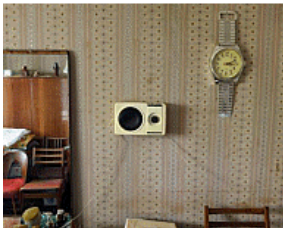
STEPHEN SHORE (American, born 1947)  
*West Ninth Avenue, Amarillo, Texas*  
October 2, 1974  
Chromogenic color print, printed 2013  
17 x 21 3/4" (43.2 x 55.2 cm)  
Acquired through the generosity of an anonymous donor



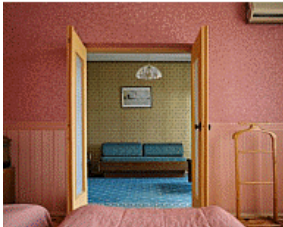
STEPHEN SHORE (American, born 1947)  
*Beverly Boulevard and La Brea Avenue, Los Angeles, California*  
June 21, 1975  
Chromogenic color print, printed 2013  
17 x 21 3/4" (43.2 x 55.2 cm)  
Acquired through the generosity of Thomas and Susan Dunn



STEPHEN SHORE (American, born 1947)  
*Ginger Shore, Causeway Inn, Tampa, Florida*  
November 17, 1977  
Chromogenic color print, printed 2013  
17 x 21 3/4" (43.2 x 55.2 cm)  
Gift of the artist



STEPHEN SHORE (American, born 1947)  
*Rakhil Rusakovskaya's Apartment, Kiev, Ukraine*  
July 28, 2012  
Chromogenic color print  
17 x 21 3/4" (43.2 x 55.2 cm)  
Gift of the artist



STEPHEN SHORE (American, born 1947)  
*Room 509, Dnipro Hotel, Kiev, Ukraine*  
July 18, 2012  
Chromogenic color print  
17 x 21 3/4" (43.2 x 55.2 cm)  
Gift of the artist



STEPHEN SHORE (American, born 1947)  
*Elka Seltzer's Front Door, Ovruch, Ukraine*  
July 31, 2012  
Chromogenic color print  
17 x 21 3/4" (43.2 x 55.2 cm)  
Gift of the artist



STEPHEN SHORE (American, born 1947)  
*Isaak Bakmayev's Medals, Berdichev, Ukraine*  
July 29, 2012  
Chromogenic color print  
17 x 21 3/4" (43.2 x 55.2 cm)  
Gift of the artist



PAUL GRAHAM (British, born 1956)  
*Young Executives, Bank of England, London*  
November 1981  
Pigmented inkjet print, printed 2011  
8 x 9 15/16" (20.3 x 25.3 cm)  
Acquired through the generosity of Richard O. Rieger



PAUL GRAHAM (British, born 1956)  
*Woman at Bus Stop, Mill Hill, North London*  
November 1982  
Pigmented inkjet print, printed 2011  
8 x 9 15/16" (20.3 x 25.3 cm)  
Acquired through the generosity of Richard O. Rieger



PAUL GRAHAM (British, born 1956)  
*Looking Back on the City, Highbury, North London*  
March 1982  
Pigmented inkjet print, printed 2011  
8 x 9 15/16" (20.3 x 25.3 cm)  
Acquired through the generosity of Richard O. Rieger



PAUL GRAHAM (British, born 1956)  
*Lorry Driver, Beacon Services, South Mimms, Hertfordshire*  
May 1982  
Pigmented inkjet print, printed 2011  
8 x 9 15/16" (20.3 x 25.3 cm)  
Acquired through the generosity of Richard O. Rieger





PAUL GRAHAM (British, born 1956)  
*Flooded Fields, Bedfordshire*  
June 1982  
Pigmented inkjet print, printed 2011  
8 x 9 15/16" (20.3 x 25.3 cm)  
Acquired through the generosity of Richard O. Rieger



PAUL GRAHAM (British, born 1956)  
*Cafe Waitress, John's Cafe, Sandy, Bedfordshire*  
May 1982  
Pigmented inkjet print, printed 2011  
8 x 9 15/16" (20.3 x 25.3 cm)  
Committee on Photography Fund



PAUL GRAHAM (British, born 1956)  
*Little Chef in Rain, St. Neots, Cambridgeshire*  
May 1982  
Pigmented inkjet print, printed 2011  
8 x 9 15/16" (20.3 x 25.3 cm)  
Committee on Photography Fund



PAUL GRAHAM (British, born 1956)  
*Ashtray on Table, Morley's Cafe, Markham Moor, Nottinghamshire*  
February 1981  
Pigmented inkjet print, printed 2011  
8 x 9 15/16" (20.3 x 25.3 cm)  
Committee on Photography Fund



PAUL GRAHAM (British, born 1956)  
*Petrol Station, Blyth Services, Nottinghamshire*  
March 1981  
Pigmented inkjet print, printed 2011  
8 x 9 15/16" (20.3 x 25.3 cm)  
Committee on Photography Fund



PAUL GRAHAM (British, born 1956)  
*Blyth Services at Night, Blyth, Nottinghamshire*  
February 1981  
Pigmented inkjet print, printed 2011  
8 x 9 15/16" (20.3 x 25.3 cm)  
Committee on Photography Fund



PAUL GRAHAM (British, born 1956)  
*Bible, Driver's Bedroom, Blyth Services, Blyth, Nottinghamshire*  
February 1981  
Pigmented inkjet print, printed 2011  
8 x 9 15/16" (20.3 x 25.3 cm)  
Committee on Photography Fund



PAUL GRAHAM (British, born 1956)  
*Ferrybridge Powerstation, West Yorkshire*  
November 1982  
Pigmented inkjet print, printed 2011  
8 x 9 15/16" (20.3 x 25.3 cm)  
Committee on Photography Fund



PAUL GRAHAM (British, born 1956)  
*Driver, Hillcrest Cafe, Selby Fork, North Yorkshire*  
August 1981  
Pigmented inkjet print, printed 2011  
8 x 9 15/16" (20.3 x 25.3 cm)  
Committee on Photography Fund



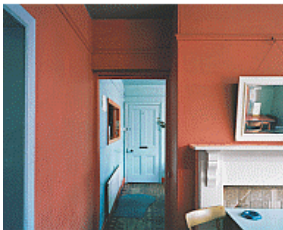
PAUL GRAHAM (British, born 1956)  
*Poppies in Mist, Bramham, West Yorkshire*  
May 1982  
Pigmented inkjet print, printed 2011  
8 x 9 15/16" (20.3 x 25.3 cm)  
Committee on Photography Fund



PAUL GRAHAM (British, born 1956)  
*Bus Converted to Cafe, Lay-By, West Yorkshire*  
November 1982  
Pigmented inkjet print, printed 2011  
8 x 9 15/16" (20.3 x 25.3 cm)  
The Photography Council Fund



PAUL GRAHAM (British, born 1956)  
*Burning Fields, Melmerby, North Yorkshire*  
September 1981  
Pigmented inkjet print, printed 2011  
8 x 9 15/16" (20.3 x 25.3 cm)  
The Photography Council Fund



PAUL GRAHAM (British, born 1956)  
*Interior, Tyne House Cafe, Catterick, North Yorkshire*  
September 1981  
Pigmented inkjet print, printed 2011  
8 x 9 15/16" (20.3 x 25.3 cm)  
The Photography Council Fund



PAUL GRAHAM (British, born 1956)  
*Fields at Dusk, Barton, North Yorkshire*  
November 1982  
Pigmented inkjet print, printed 2011  
8 x 9 15/16" (20.3 x 25.3 cm)  
The Photography Council Fund



PAUL GRAHAM (British, born 1956)  
*Couple on Day-Trip, Washington Services, Tyne and Wear*  
May 1982  
Pigmented inkjet print, printed 2011  
8 x 9 15/16" (20.3 x 25.3 cm)  
The Photography Council Fund



PAUL GRAHAM (British, born 1956)  
*Looking North, Newcastle By-Pass, Tyne and Wear*  
November 1981  
Pigmented inkjet print, printed 2011  
8 x 9 15/16" (20.3 x 25.3 cm)  
The Photography Council Fund



PAUL GRAHAM (British, born 1956)  
*Great North Road Garage, Edinburgh*  
November 1981  
Pigmented inkjet print, printed 2011  
8 x 9 15/16" (20.3 x 25.3 cm)  
The Photography Council Fund

## Gallery 3



VALIE EXPORT (Austrian, born 1940)  
*Identity Transfer 1*  
1968  
Gelatin silver print, printed 2011  
9 1/4 x 6 5/16" (23.5 x 16 cm)  
Acquired through the generosity of the Ronald and Jo Carole Lauder Foundation



VALIE EXPORT (Austrian, born 1940)  
*Identity Transfer 3*  
1968  
Gelatin silver print, printed 2011  
9 1/4 x 6 5/16" (23.5 x 16 cm)  
Cornelius N. Bliss Memorial Fund



VALIE EXPORT (Austrian, born 1940)  
*Identity Transfer 2*  
1968  
Gelatin silver print, printed 2011  
9 1/4 x 6 5/16" (23.5 x 16 cm)  
Acquired through the generosity of Thomas L. Kempner, Jr.



VALIE EXPORT (Austrian, born 1940)  
*Pop (Identity Transfer)*  
1968  
Gelatin silver print  
9 1/4 x 4 3/4" (23.5 x 12 cm)  
Committee on Photography Fund



VALIE EXPORT (Austrian, born 1940)  
*Visual Text, Finger Poem*  
1968/1973  
Gelatin silver prints, pencil, and pen on paper  
15 3/4 x 27 9/16" (40 x 70 cm)  
Acquired through the generosity of Thomas and Susan Dunn



VALIE EXPORT (Austrian, born 1940)

*VALIE EXPORT SMART EXPORT*

1970

Gelatin silver print, printed 2005 and package of cigarettes

.1: 7 11/16 x 6 3/4" (19.5 x 17.2 cm)

.2: 12 3/8 x 11 7/16 x 4 5/16" (31.5 x 29 x 11 cm)

Acquired through the generosity of the Ronald and Jo Carole Lauder Foundation



VALIE EXPORT (Austrian, born 1940)

*Cycle of Civilization. The Mythology of the Civilizing Processes*

1972

Gelatin silver print

19 9/16 x 15 9/16" (49.7 x 39.5 cm)

Acquired through the generosity of the Ronald and Jo Carole Lauder Foundation



VALIE EXPORT (Austrian, born 1940)

*Cycle of Civilization. The Mythology of the Civilizing Processes*

1972

Gelatin silver print

19 9/16 x 15 9/16" (49.7 x 39.5 cm)

Acquired through the generosity of the Ronald and Jo Carole Lauder Foundation



VALIE EXPORT (Austrian, born 1940)

*Cycle of Civilization. The Mythology of the Civilizing Processes*

1972

Gelatin silver print

19 9/16 x 15 9/16" (49.7 x 39.5 cm)

Acquired through the generosity of the Ronald and Jo Carole Lauder Foundation



VALIE EXPORT (Austrian, born 1940)

*Cycle of Civilization. The Mythology of the Civilizing Processes*

1972

Gelatin silver print

15 9/16 x 19 9/16" (39.5 x 49.7 cm)

Acquired through the generosity of the Ronald and Jo Carole Lauder Foundation



LYNN HERSHMAN LEESON (American, born 1941)  
*Want Ad, San Francisco Progress*  
 1974  
 Gelatin silver print  
 15 1/4 x 19" (38.7 x 48.3 cm)  
 The Modern Women's Fund



LYNN HERSHMAN LEESON (American, born 1941)  
*Lynn Turning Into Roberta*  
 1978  
 16mm film transferred to video (color, sound)  
 5:30 min.  
 Modern Women's Fund



LYNN HERSHMAN LEESON (American, born 1941)  
*First Multiple Kristine Stiles at Gallery Opening*  
 1976  
 Chromogenic color print, printed 2003  
 8 1/16 x 5 5/16" (20.5 x 13.5 cm)  
 The Modern Women's Fund



LYNN HERSHMAN LEESON (American, born 1941)  
*Lynn Applying Makeup to Kristine Stiles*  
 1976  
 Silver dye bleach print  
 4 5/8 x 6 13/16" (11.7 x 17.3 cm)  
 Gift of Gallery Paule Anglim



LYNN HERSHMAN LEESON (American, born 1941)  
*Roberta's Construction Chart #2*  
 1976  
 Chromogenic color print, printed 2003  
 22 15/16 x 29 5/8" (58.3 x 75.3 cm)  
 The Modern Women's Fund



LYNN HERSHMAN LEESON (American, born 1941)  
*Roberta's Room, Baker Acres*  
1976  
Chromogenic color print  
9 1/2 x 6 1/8" (24.1 x 15.5 cm)  
Gift of Gallery Paule Anglim



LYNN HERSHMAN LEESON (American, born 1941)  
*There Are Times When I Can Feel Myself Being Trapped*  
1976  
Chromogenic color print, printed 2003  
31 15/16 x 26" (81.2 x 66 cm)  
Gift of Gallery Paule Anglim



LYNN HERSHMAN LEESON (American, born 1941)  
*Roberta Multiples*  
1977  
Chromogenic color print, printed 1999  
38 9/16 x 25 1/2" (98 x 64.7 cm)  
The Modern Women's Fund



LYNN HERSHMAN LEESON (American, born 1941)  
*Roberta's Elura Ash Blonde Frosted Wig*  
1977  
Modacrylic fiber  
12 x 8 x 6" (30.5 x 20.3 x 15.2 cm)  
The Modern Women's Fund



LYNN HERSHMAN LEESON (American, born 1941)  
*Kristine Stiles As First Roberta Multiple Mixes with Gallery Crowd*  
1978  
Gelatin silver print  
6 1/8 x 9 7/16" (15.5 x 24 cm)  
Gift of Gallery Paule Anglim





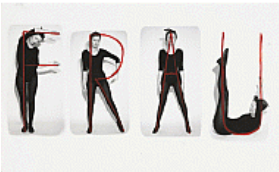
LYNN HERSHMAN LEESON (American, born 1941)  
*Roberta Multiple in Dance*  
 1978  
 Gelatin silver print  
 6 1/8 x 9 5/8" (15.6 x 24.4 cm)  
 Gift of Gallery Paule Anglim



LYNN HERSHMAN LEESON (American, born 1941)  
*Roberta's Body Language Chart*  
 1978  
 Pigmented inkjet print  
 39 3/4 x 32 7/8" (101 x 83.5 cm)  
 The Modern Women's Fund



LYNN HERSHMAN LEESON (American, born 1941)  
*Roberta's Replacement At Her Temp Job After She Was Fired*  
 1978  
 Chromogenic color print, printed 2003  
 8 3/8 x 5 3/8" (21.2 x 13.7 cm)  
 Gift of Gallery Paule Anglim



BIRGIT JÜRGENSSEN (Austrian, 1949–2003)  
*Woman*  
 1972  
 Gelatin silver print with applied red ink  
 8 1/4 x 13 1/4" (21 x 33.7 cm)  
 Gift of Galerie Hubert Winter



BIRGIT JÜRGENSSEN (Austrian, 1949–2003)  
*I Want Out Of Here!*  
 1976  
 Gelatin silver print  
 11 3/4 x 8 3/8" (29.8 x 21.2 cm)  
 The Photography Council Fund



JÜRGEN KLAUKE (German, born 1943)  
*Physiognomien*  
 1974-75  
 Gelatin silver prints  
 Each 23 5/8 x 19 11/16" (60 x 50 cm)  
 Acquired through the generosity of Helen Kornblum in honor of Roxana Marcoci and the Photography Council Fund

## Gallery 3 (vitrine)



LYNN HERSHMAN LEESON (American, born 1941)

*Roberta Breitmore Blank Check*

1974

Offset lithography and letterpress with black ink on paper  
2 3/4 x 6" (7 x 15.2 cm)

The Modern Women's Fund



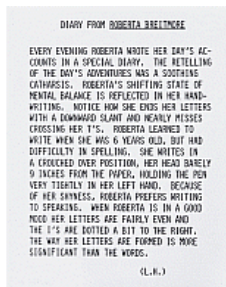
LYNN HERSHMAN LEESON (American, born 1941)

*Dental X-Ray*

1975

Chromogenic color print  
7 3/8 x 9 7/16" (18.7 x 24 cm)

Gift of Gallery Paule Anglim



LYNN HERSHMAN LEESON (American, born 1941)

*Description of How Roberta Wrote in Her Diary*

1975

Chromogenic color print  
6 3/8 x 9 7/16" (16.2 x 24 cm)

Gift of Gallery Paule Anglim



LYNN HERSHMAN LEESON (American, born 1941)

*Untitled (Roberta and B in Union Square)*

1975

Pigmented inkjet print, printed 2003  
9 5/8 x 7 1/16" (24.4 x 18 cm)

The Modern Women's Fund



LYNN HERSHMAN LEESON (American, born 1941)

*Roberta's Driver's License*

1976

Chromogenic color print  
7 7/16 x 9 7/16" (18.9 x 24 cm)

The Modern Women's Fund



LYNN HERSHMAN LEESON (American, born 1941)

*Roberta's Handwriting Chart*

1976

Chromogenic color print, printed 2003  
6 3/8 x 9 7/16" (16.2 x 24 cm)

Gift of Gallery Paule Anglim

## Gallery 4



ALLAN SEKULA (American, born 1951)  
*Chapter One, Fish Story from the series Fish Story*  
1988-95  
Dye transfer prints and text panels  
Various  
Vital Projects Fund, Robert B. Menschel



YTO BARRADA (French, born 1971)  
*Autocar--Tangier, Figs. 1-4*  
2004  
Chromogenic color prints  
Each 34 5/8 x 34 5/8" (88 x 88 cm)  
Acquired through the generosity of Jerry I. Speyer and the Contemporary Arts Council of The Museum of Modern Art



OSCAR MUÑOZ (Colombian, born 1951)  
*The Game of Probabilities*  
2007  
Chromogenic color prints, printed 2012  
Each 18 7/8 x 15 13/16" (47.9 x 40.2 cm)  
Gift of the artist



MARIAH ROBERTSON (American, born 1975)  
11  
2012  
Chromogenic color print  
100' x 30" (3048 x 76.2 cm)  
Acquired through the generosity of Thomas and Susan Dunn

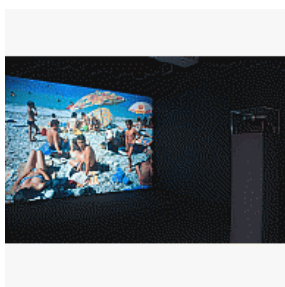


LIZ DESCHENES (American, born 1966)  
*Moiré #25*  
2009  
Chromogenic color print  
54 1/16 x 40 1/8" (137.3 x 101.9 cm)  
Fund for the Twenty-First Century

Gallery 5 (works will be on view starting August 23, 2013)



TARYN SIMON (American, born 1975)  
*Charles Irvin Fain. Scene of the Crime, the Snake River, Melba, Idaho. Served 18 Years of a Death Sentence for Murder, Rape and Kidnapping*  
2002  
Pigmented inkjet print, printed 2012  
48 x 62" (121.9 x 157.5 cm)  
Anonymous gift



PHIL COLLINS (British, born 1970)  
*free fotolab*  
2009  
Multimedia installation with 80 slides  
9 min., 20 sec.  
Fund for the Twenty-First Century



STAN DOUGLAS (Canadian, born 1960)  
*A Luta Continua, 1974*  
2012  
Pigmented inkjet print  
47 1/2 x 71 1/4" (120.7 x 181 cm)  
Acquired through the generosity of the Photography Council and the Contemporary Arts Council of The Museum of Modern Art



STAN DOUGLAS (Canadian, born 1960)  
*Two Friends, 1975*  
2012  
Pigmented inkjet print  
42 x 56" (106.7 x 142.2 cm)  
Acquired through the generosity of the Photography Council and the Contemporary Arts Council of The Museum of Modern Art



LESLIE HEWITT (American, born 1977)  
*Riffs on Real Time*  
2002-05  
Chromogenic color print  
30 x 24" (76.2 x 61 cm)  
Fund for the Twenty-First Century



LESLIE HEWITT (American, born 1977)  
*Riffs on Real Time*  
2002-05  
Chromogenic color print  
30 x 24" (76.2 x 61 cm)  
Fund for the Twenty-First Century



LESLIE HEWITT (American, born 1977)  
*Riffs on Real Time*  
2002-05  
Chromogenic color print  
30 x 24" (76.2 x 61 cm)  
Fund for the Twenty-First Century



LESLIE HEWITT (American, born 1977)  
*Riffs on Real Time*  
2002-05  
Chromogenic color print  
30 x 24" (76.2 x 61 cm)  
Fund for the Twenty-First Century



LESLIE HEWITT (American, born 1977)  
*Riffs on Real Time*  
2002-05  
Chromogenic color print  
30 x 24" (76.2 x 61 cm)  
Fund for the Twenty-First Century



HANK WILLIS THOMAS (American, born 1976)  
*Caramel Cocoa Butta' Honey Lova' You're Like No Otha', 1982*  
2006  
Chromogenic color print  
29 7/8 x 21 7/8" (75.9 x 55.5 cm)  
Fund for the Twenty-First Century



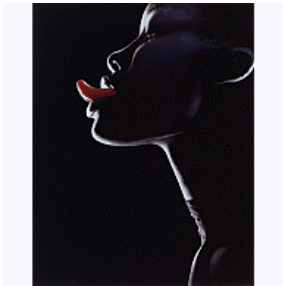
HANK WILLIS THOMAS (American, born 1976)  
*Duke Natural, 1968*  
2006  
Chromogenic color print  
27 15/16 x 20 11/16" (71 x 52.6 cm)  
Fund for the Twenty-First Century



HANK WILLIS THOMAS (American, born 1976)  
*It's the Real Thing!, 1978*  
2006  
Chromogenic color print  
27 x 24 1/8" (68.6 x 61.3 cm)  
Fund for the Twenty-First Century



HANK WILLIS THOMAS (American, born 1976)  
*So Glad We Made It, 1979*  
2006  
Chromogenic color print  
24 x 27 15/16" (60.9 x 71 cm)  
Fund for the Twenty-First Century



HANK WILLIS THOMAS (American, born 1976)  
*Oh Behave: Smooth Exotic Vivid Taste, 1999*  
2008  
Chromogenic color print  
26 7/8 x 21 1/8" (68.3 x 53.7 cm)  
Fund for the Twenty-First Century