

The information contained in this document is subject to revision by MoMA's curatorial staff. When publication is intended, an application for publication rights for material quoted from documentation must be submitted to the Department of Collection Management & Exhibition Registration in advance. These stipulations also apply to dissertations and research theses.

Charles White: A Retrospective

The Art Institute of Chicago June 08, 2018-September 03, 2018

The Museum of Modern Art, New York October 07, 2018-January 13, 2019

October 2, 2018 (public opening October 7, 2018)

MoMA, 11w53, On View, 3rd Floor

Los Angeles County Museum of Art February 17, 2019-June 09, 2019

01) *Five Great American Negroes* mural



Photograph of Charles White working on "Five Great American Negroes" (1939)

1939

Gelatin silver print

4 x 5" (10.2 x 12.7 cm)

Department of Painting and Sculpture: Artists Records, I.347. The Museum of Modern Art Archives, New York

ARCH.1586.3



Photograph of Charles White working on "Five Great American Negroes" (1939)

1939

Gelatin silver print

4 x 5" (10.2 x 12.7 cm)

Department of Painting and Sculpture: Artists Records, I.347. The Museum of Modern Art Archives, New York

ARCH.1586.4



CHARLES WHITE (American, 1918–1979)

Five Great American Negroes

1939

Oil on canvas

60 × 155" (152.4 × 393.7 cm)

From the Collection of the Howard University Gallery of Art, Washington, D.C.

LN2018.1484



Carbon copy of letter from Dorothy Miller to Fred Biesel, State Supervisor of Art and Craft Project, Illinois Art Project, Work Projects Administration (WPA) requesting photographs of murals and drawings by Charles White in anticipation of possible exhibition at MoMA

November 10, 1941

10 15/16 x 8 7/16" (27.8 x 21.4 cm)

Department of Painting and Sculpture: Artists Records, I.347. The Museum of Modern Art Archives, New York
ARCH.1585



Cover letter from Edgar Britton, Mural Division of the Illinois Art and Craft Project, Illinois Art Project, Art Program, Work Projects Administration (WPA) to Dorothy Miller enclosing photographs of murals by Charles White

November 14, 1941

11 x 8 1/2" (27.9 x 21.6 cm)

Department of Painting and Sculpture: Artists Records, I.347. The Museum of Modern Art Archives, New York
ARCH.1587.1



"Guests at the private preview and tea which opened the exhibition 'Young Negro Art,' the work of students at Hampton Institute, at the Museum of Modern Art, 11 West 53rd St., New York. Guests and members of the museum staff are shown having tea in the museum's penthouse. Left to right: Alfred H. Barr, Jr., Director of the Museum; Elizabeth Catlett, wife of Charles White; Dorothy Miller, Associate Curator of Painting and Sculpture at the Museum; Charles White, mural painter, of Chicago." Publicity photograph released in connection with the exhibition, "Young Negro Art."

October 5, 1943

Gelatin silver print

4 1/2 x 6 1/2" (11.4 x 16.5 cm)

Photographic Archive. The Museum of Modern Art Archives, New York IN243.8



CHARLES WHITE (American, 1918–1979)
Love Letter #1
1971
Lithograph
composition and sheet: 30 1/16 x 22 3/8" (76.4 x 56.8 cm)
John B. Turner Fund, The Museum of Modern Art, New York
90.2013.1



CHARLES WHITE (American, 1918–1979)
Love Letter II
1977
Lithograph
30 1/8 x 22 7/16" (76.5 x 57 cm)
The Art Institute of Chicago, Margaret Fisher Fund
LN2018.1345



CHARLES WHITE (American, 1918–1979)
Love Letter III
1977
Lithograph
30 1/16 x 22 5/8" (76.4 x 57.4 cm)
The Art Institute of Chicago, Margaret Fisher Fund
LN2018.1333



CHARLES WHITE (American, 1918–1979)
Self-Portrait
1935
Black crayon on cardboard
16 5/16 × 11 1/16" (41.4 × 28.1 cm)
Frame: 23 1/4 × 18 × 1 1/4" (59.1 × 45.7 × 3.2 cm)
Private collection
LN2018.1285



CHARLES WHITE (American, 1918–1979)
Sketchbook
1937–1942
Charcoal, pastel, ink, graphite, pen and inks and watercolor on ivory wove paper
10 1/4 × 8 1/16" (26 × 20.5 cm)
The Art Institute of Chicago, Purchase, Ada Turnbull Hertle Fund, Director's Fund, Olivia Shaler Swan Memorial Endowment Fund, Hugh Leander and Mary Trumbull Adams Memorial Endowment Fund; and funds provided by Mary P. Hines, Mr. and Mrs. Robert S. Hartman, Ruth Hartman through the Regenstein Foundation, Marshall Field, Denise and Gary Gardner, John Nichols, Sandra and Deven Rand, Amina J. Dickerson, Jean Rudd and Lionel E. Bolin, Esther Sparks Sprague, Lynn Evans in memory of Beatrice Barnett Evans and John W. Evans, Jr., James T. Parker, Patricia Pratt in memory of Marion White Pratt Lindsay, Edwin T. White, Jr., Daniel Schulman, Frederick G. and Joele Jones Michaud
LN2018.1286



CHARLES WHITE (American, 1918–1979)
Kitchenette Debutantes
1939
Watercolor on paper
27 × 22 7/16" (68.6 × 57 cm)
Private collection
LN2018.1288



CHARLES WHITE (American, 1918–1979)
Untitled (Seated Woman)
c. 1939
Oil monotype on paper
14 × 10 1/2" (35.6 × 26.7 cm)
Merrill C. Berman Collection
LN2018.1364



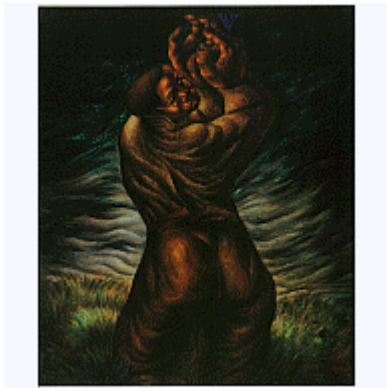
CHARLES WHITE (American, 1918–1979)
Card Players
1939
Oil on canvas
30 × 36" (76.2 × 91.4 cm)
Saint Louis Art Museum, Gift of the Federal Works Agency, Works Projects
Administration
LN2018.1289



CHARLES WHITE (American, 1918–1979)
Preacher
1940
Tempera on board
30 × 21 1/2" (76.2 × 54.6 cm)
The Davidsons, Los Angeles, California
LN2018.1290



CHARLES WHITE (American, 1918–1979)
There Were No Crops This Year
1940
Graphite on paper
Image: 28 3/4 × 19 1/4" (73 × 48.9 cm)
Frame: 38 1/2 × 28 1/2 × 1 1/2" (97.8 × 72.4 × 3.8 cm)
Private collection
LN2018.1357



CHARLES WHITE (American, 1918–1979)
Spiritual
1941
Oil on canvas
36 × 30" (91.4 × 76.2 cm)
South Side Community Art Center, Chicago
LN2018.1291



CHARLES WHITE (American, 1918–1979)
Hear This
1942
Oil on canvas
22 × 30" (55.9 × 76.2 cm)
Frame: 27 1/2 × 35 1/2 × 2 3/8" (69.9 × 90.2 × 6 cm)
The Harmon and Harriet Kelley Foundation for the Arts
LN2018.1348



CHARLES WHITE (American, 1918–1979)
Native Son No. 2
1942
Ink on paper
48 × 36" (121.9 × 91.4 cm)
From the Collection of Howard University Gallery of Art, Washington, D.C.
LN2018.1485



CHARLES WHITE (American, 1918–1979)
This, My Brother
1942
Oil on canvas
24 × 36" (61 × 91.4 cm)
The Art Institute of Chicago, Chicago, Pauline Palmer Prize Fund
LN2018.1293



CHARLES WHITE (American, 1918–1979)
John Brown
1938
Charcoal on paper
29 1/2 × 21" (74.9 × 53.3 cm)
Frame: 38 × 29 1/2 × 1 1/2" (96.5 × 74.9 × 3.8 cm)
Spelman College Museum of Fine Art, Atlanta, Gift from the collection of George and Joyce Wein
LN2018.1287



CHARLES WHITE (American, 1918–1979)
Study for Struggle for Liberation (Chaotic Stage of the Negro, Past and Present)
1940
Tempera on illustration board
Image: 16 3/4 × 38 5/8" (42.5 × 98.1 cm)
Mat: 13 1/4 × 36" (33.7 × 91.4 cm)
Collection of Michael Rosenfeld Gallery LLC, New York
LN2018.1356



CHARLES WHITE (American, 1918–1979)
Untitled (Four Workers)
1940
Tempera on paperboard
20 × 30" (50.8 × 76.2 cm)
Frame: 30 3/8 × 40 5/8" (77.2 × 103.2 cm)
Private collection
LN2018.1335



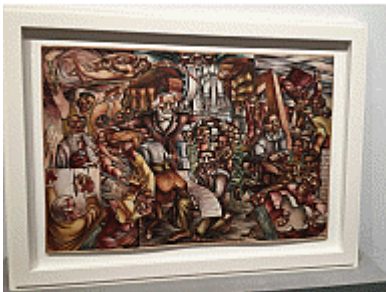
CHARLES WHITE (American, 1918–1979)
Paul Robeson (Study for Contribution of the Negro to Democracy in America)
1942–1943
Carbon pencil over charcoal, with additions and corrections in white gouache, and border in Wolff crayon, on cream drawing board
24 7/8 × 19 1/16" (63.2 × 48.4 cm)
Frame: 32 7/16 × 26 1/16 × 1 9/16" (82.4 × 66.2 × 4 cm)
Princeton University Art Museum, Princeton, NJ, Museum purchase, Kathleen Compton Sherrerd Fund for Acquisitions in American Art
LN2018.1294



CHARLES WHITE (American, 1918–1979)
Denmark Vesey (Study for Contribution of the Negro to Democracy in America)
1943
Charcoal and white gouache on illustration board
21 × 19 1/2" (53.3 × 49.5 cm)
On loan from the Carolina Art Association/Gibbes Museum of Art, Charleston, South Carolina
LN2018.1295



CHARLES WHITE (American, 1918–1979)
Sojourner Truth and Booker T. Washington (Study for Contribution of the Negro to Democracy in America)
1943
Pencil on illustration board
37 5/8 × 28" (95.6 × 71.1 cm)
Frame: 37 5/8 × 40 1/4" (95.6 × 102.2 cm)
Collection of the Newark Museum, Purchase 1944 Sophronia Anderson Bequest Fund
LN2018.1296



CHARLES WHITE (American, 1918–1979)
Study for The Contribution of the Negro to Democracy in America
1943
Tempera on board
17 3/4 × 26 3/8" (45.1 × 67 cm)
Mr. and Mrs. Salz
LN2018.1336



CHARLES WHITE (American, 1918–1979)
Headlines
1944
Ink, gouache, and newspaper on board
20 × 16" (50.8 × 40.6 cm)
Collection of William M. and Elisabeth M. Landes
LN2018.1366



CHARLES WHITE (American, 1918–1979)
Soldier
1944
Tempera on Masonite
30 × 25" (76.2 × 63.5 cm)
The Huntington Library, Art Collections, and Botanical Gardens. Gift of Sandra and Bram Dijkstra
LN2018.1292



CHARLES WHITE (American, 1918–1979)
Hope for the Future
1945
Lithograph
composition: 13 3/16 x 10 11/16" (33.5 x 27.2 cm); sheet: 18 7/8 x 12 11/16" (48 x 32.3 cm)
John B. Turner Fund, The Museum of Modern Art, New York
88.2013



CHARLES WHITE (American, 1918–1979)
Mother (Awaiting His Return)
1945
Lithograph
19 × 15 11/16" (48.3 × 39.8 cm)
Private collection
LN2018.1297



CHARLES WHITE (American, 1918–1979)
War Worker
1945
Tempera on board
23 5/16 × 17 1/2" (59.3 × 44.5 cm)
Montclair Art Museum purchase; prior gifts of Mr. and Mrs. Warren F. Van Thunen, the Estate of Francis Herbert Peaty, Mrs. Siegfried Peierls and Acquisition Fund
LN2018.323



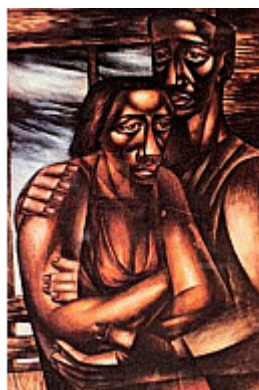
CHARLES WHITE (American, 1918–1979)
Black Sorrow (Dolor Negro)
1946
Lithograph
24 5/16 × 19 11/16" (61.8 × 50 cm)
Philadelphia Museum of Art: Purchased with the James D. Crawford and
Judith N. Dean Fund, 2003
LN2018.1283



CHARLES WHITE (American, 1918–1979)
Can a Negro Study Law in Texas
1946
Charcoal and ink, with white heightening on paper
24 × 16" (61 × 40.6 cm)
Frame: 31 3/8 × 24 1/2" (79.7 × 62.2 cm)
John L. Warfield Center of African and African American Studies, The University
of Texas at Austin
LN2018.1299



CHARLES WHITE (American, 1918–1979)
The Return of the Soldier (Dixie Comes to New York)
1946
Pen and ink with gouache on board
24 1/4 × 18 7/8" (61.6 × 47.9 cm)
Prints and Photographs Division, Library of Congress, Washington, D.C.
LN2018.1298



CHARLES WHITE (American, 1918–1979)
Two Alone
1946
Oil on board
25 1/2 × 19" (64.8 × 48.3 cm)
Clark Atlanta University Art Collection
LN2018.1337



CHARLES WHITE (American, 1918–1979)
Worker
1944
Linoleum cut
15 1/4 × 10 7/8" (38.7 × 27.6 cm)
Estate of Norman Lewis, courtesy of Michael Rosenfeld Gallery LLC, New York
LN2018.1369



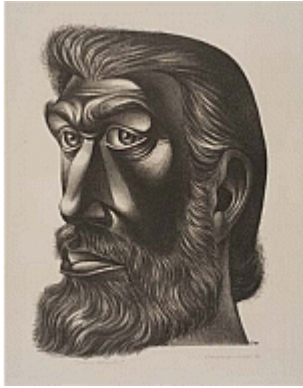
CHARLES WHITE (American, 1918–1979)
Untitled (Bearded Man)
c. 1949
Linoleum cut
composition: 7 13/16 × 6" (19.9 × 15.2 cm); sheet: 10 1/2 × 8 5/16" (26.7 × 21.1 cm)
John B. Turner Fund, The Museum of Modern Art, New York
89.2013



CHARLES WHITE (American, 1918–1979)
Frederick Douglass (The Ghost of Frederick Douglass II)
c. 1949
Pen and ink over graphite with touches of white gouache, on illustration board
20 × 29 7/8" (50.8 × 75.9 cm)
Courtesy of New Jersey State Museum Collection, Museum Purchase
LN2018.1362



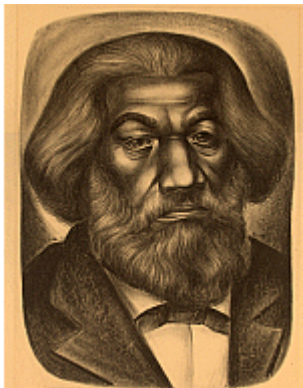
CHARLES WHITE (American, 1918–1979)
Frederick Douglass Lives Again (The Ghost of Frederick Douglass)
1949
Pen and ink over pencil on illustration board
19 1/2 × 29 1/4" (49.5 × 74.3 cm)
Frame: 31 × 40 3/4 × 2 1/4" (78.7 × 103.5 × 5.7 cm)
Collection Sheldon Museum of Art, University of Nebraska, Lincoln, Olga N. Sheldon Acquisition Trust
LN2018.1302



CHARLES WHITE (American, 1918–1979)
John Brown
1949
Lithograph
18 7/8 × 15 3/4" (47.9 × 40 cm)
Frame: 29 × 23 × 1 1/2" (73.7 × 58.4 × 3.8 cm)
Lent by The Metropolitan Museum of Art, Gift of Reba and Dave Williams, 1999
LN2018.1301



CHARLES WHITE (American, 1918–1979)
Trenton Six
1949
Ink over graphite underdrawing on paperboard
21 15/16 × 29 7/8" (55.7 × 75.9 cm)
Amon Carter Museum of American Art, Fort Worth, TX
LN2018.1300



CHARLES WHITE (American, 1918–1979)
Frederick Douglass
1950
Lithograph
22 3/4 × 16 1/2" (57.8 × 41.9 cm)
Los Angeles County Museum of Art, Gift of Sylvia and Frederick Reines
LN2018.1305



CHARLES WHITE (American, 1918–1979)
The Children
1950
Ink and graphite on paper
29 3/4 × 20" (75.6 × 50.8 cm)
Smithsonian American Art Museum, Gift of Julie Seitzman and museum purchase through the Luisita L. and Franz H. Denghausen Endowment
LN2018.1304



CHARLES WHITE (American, 1918–1979)
Exodus I: Black Moses (Harriet Tubman)
1951
Linoleum cut
24 5/8 × 29 7/16" (62.5 × 74.8 cm)
Philadelphia Museum of Art, Bequest of Mrs. Rose Weiss, 2009
LN2018.1309



CHARLES WHITE (American, 1918–1979)
Gideon
1951
Lithograph
20 1/16 × 15 3/8" (51 × 39.1 cm)
Prints and Photographs Division, Library of Congress, Washington, D.C.
LN2018.1308



CHARLES WHITE (American, 1918–1979)
Our Land
1951
Egg tempera on panel
24 × 20" (61 × 50.8 cm)
Private collection
LN2018.1306



CHARLES WHITE (American, 1918–1979)
Young Farmer
1953
Linoleum cut
30 3/16 × 22 1/2" (76.7 × 57.2 cm)
Collection Harold Davis, MD
LN2018.322



CHARLES WHITE (American, 1918–1979)
Young Farmer
1953
Linoleum cut
28 3/4 x 19 13/16" (73 x 50.4 cm)
Museum of Fine Arts, Boston. Lee M. Friedman Fund and The Heritage Fund
for a Diverse Collection
LN2018.1316



CHARLES WHITE (American, 1918–1979)
Work (Young Worker)
1953
Wolff crayon and charcoal on illustration board
44 x 28" (111.8 x 71.1 cm)
Frame: 58 x 51 3/4" (147.3 x 131.4 cm)
Private collection
LN2018.1315



CHARLES WHITE (American, 1918–1979)
O Freedom
1956
Charcoal, with crayon, erasing, stumping and wash, on ivory illustration board
36 1/2 x 62" (92.7 x 157.5 cm)
Frame: 40 1/2 x 66" (102.9 x 167.6 cm)
Courtesy Rennie Collection, Vancouver
LN2018.1368



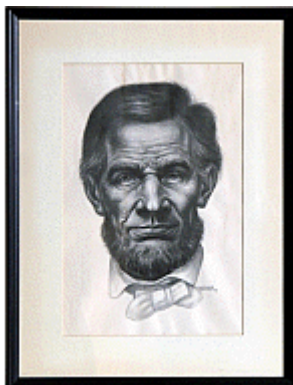
CHARLES WHITE (American, 1918–1979)
Musician in Washington Square Park
1950s
Black-and-white photograph
3 1/4 × 4 5/8" (8.3 × 11.7 cm)
LN2018.1486



CHARLES WHITE (American, 1918–1979)
Musician in Washington Square Park
1950s
Black-and-white photograph
3 1/4 × 4 5/8" (8.3 × 11.7 cm)
LN2018.1487



CHARLES WHITE (American, 1918–1979)
Gospel Singers
1951
Tempera on board
20 × 24" (50.8 × 61 cm)
Private collection
LN2018.1307



CHARLES WHITE (American, 1918–1979)
Abraham Lincoln
1952
Wolff crayon and charcoal on paperboard
27 × 21 1/2" (68.6 × 54.6 cm)
Private collection
LN2018.1311



CHARLES WHITE (American, 1918–1979)

Goodnight Irene

1952

Oil on canvas

47 × 24" (119.4 × 61 cm)

Frame: 58 7/16 × 35 1/2 × 2" (148.4 × 90.2 × 5.1 cm)

The Nelson-Atkins Museum of Art, Kansas City, Missouri (Purchase: acquired through a lead gift provided by Sarah and Landon Rowland through The Ever Glades Fund; major support provided by Lee Lyon, in memory of Joanne Lyon; Sprint; James and Elizabeth Tinsman; Neil D. Karbank; and The Sosland Family; Generous support provided by John and Joanne Bluford; The Stanley H. Durwood Foundation; Gregory M. Glore; Maurice Watson; Anne and Cliff Gall; Dr. Sere and Mrs. MaryJane Myers and Family; Gary and Debby Ballard; Dr. Loretta M. Britton; Catherine L. Futter, in memory of Mathew and Erna Futter; Jean and Moulton Green, Jr., in honor of Rose Bryant; Dr. Willie and Ms. Sandra A.J. Lawrence; Randall and Helen Ferguson; Dr. Valerie E. Chow and Judge Jon R. Gray (Ret.); Gwendolyn J. Cooke, Ph.D; Dwayne and Freida Crompton; Leodis and N. June Davis; Kimberly C. Young; Tom and Karenbeth Zacharias; Jim Baggett and Marguerite Ermeling; Rose Bryant; Tasha and Julián Zugazagoitia; Antonia Boström and Dean Baker; Sarah Beeks Higdon; Kathleen and Kevin Collison; Katelyn Crawford and John Kupstas; Kimberly Hinkle and Jason Menefee; Stephanie and Brett Knappe; Jan and Michael Schall; and Michele Valentine, in memory of Marcella Hillerman.)

LN2018.1312



CHARLES WHITE (American, 1918–1979)

Preacher

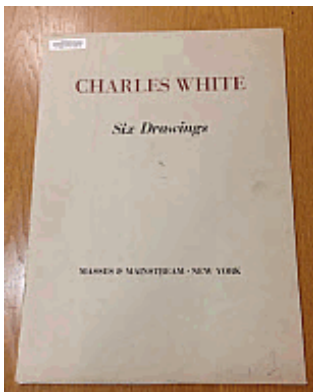
1952

Pen and ink and graphite pencil on board

22 13/16 × 29 15/16" (57.9 × 76 cm)

Whitney Museum of American Art, New York, Purchase

LN2018.1310



CHARLES WHITE (American, 1918–1979)

Charles White: Six Drawings

1953

Portfolio of six offset lithographs

18 1/2" (47 cm)

The Art Institute of Chicago, Ryerson and Burnham Libraries, Special Collections

LN2018.1365.1-7



CHARLES WHITE (American, 1918–1979)

Harvest Talk

1953

Charcoal, Wolff crayon, and graphite, with stumping and erasing on ivory wood-pulp laminate board

26 × 39 1/16" (66 × 99.2 cm)

The Art Institute of Chicago, Restricted gift of Mr. and Mrs. Robert S. Hartman
LN2018.1314



CHARLES WHITE (American, 1918–1979)

Ye Shall Inherit the Earth

1953

Charcoal on paper

39 × 26" (99.1 × 66 cm)

Anonymous loan

LN2018.1313



CHARLES WHITE (American, 1918–1979)

I've Been 'Buked and I've Been Scorned

1956

Compressed and vine charcoal with carbon pencil and charcoal wash splatter over traces of graphite pencil on illustration board

45 1/16 × 36" (114.5 × 91.4 cm)

Blanton Museum of Art, The University of Texas at Austin, Gift of Susan G. and Edmund W. Gordon to the units of Black Studies and the Blanton Museum of Art at The University of Texas at Austin

LN2018.1318



CHARLES WHITE (American, 1918–1979)

Oh, Mary, Don't You Weep

1956

Graphite and pen and ink on board

39 1/4 × 41 1/2" (99.7 × 105.4 cm)

Crystal Bridges Museum of American Art, Bentonville, Arkansas

LN2018.1284



CHARLES WHITE (American, 1918–1979)

Solid as a Rock (My God is Rock)

1958

Linoleum cut

composition: 38 3/16 x 14 15/16" (97 x 38 cm); sheet: 41 1/8 x 17 13/16" (104.5 x 45.2 cm)

John B. Turner Fund with additional support from Linda Barth Goldstein and Stephen F. Dull, The Museum of Modern Art, New York

112.2010



CHARLES WHITE (American, 1918–1979)

Micah

1964

Linoleum cut

52 3/4 x 24 1/2" (134 x 62.2 cm)

Mott-Warsh Collection, Flint, Michigan

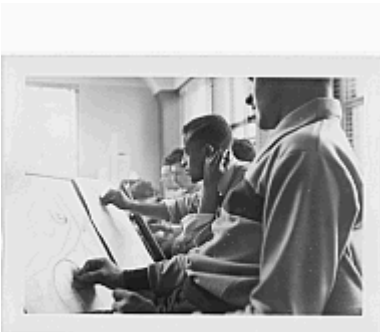
LN2018.1322



CHARLES WHITE (American, 1918–1979)
Boy playing on street
1950s
Black-and-white photograph
3 1/16 × 4 1/4" (7.8 × 10.8 cm)
Private collection
LN2018.1379



CHARLES WHITE (American, 1918–1979)
Children on the street with photographer behind
1950s
Black-and-white photograph
3 1/4 × 4 5/8" (8.3 × 11.7 cm)
Private collection
LN2018.1382



CHARLES WHITE (American, 1918–1979)
Drawing class
1950s
Black-and-white photograph
3 3/8 × 4 7/16" (8.6 × 11.3 cm)
Private collection
LN2018.1377



CHARLES WHITE (American, 1918–1979)
Ethelene Gary Marsh
1950
Black-and-white photograph
3 5/16 × 4 1/2" (8.4 × 11.4 cm)
Private collection
LN2018.1371



CHARLES WHITE (American, 1918–1979)
Frances Barrett White
1950
Black-and-white photograph
4 3/4 × 3 3/8" (12.1 × 8.6 cm)
Private collection
LN2018.1370



CHARLES WHITE (American, 1918–1979)
Jacob Lawrence
1950
Black-and-white photograph
3 3/8 × 4 1/2" (8.6 × 11.4 cm)
Private collection
LN2018.1373



CHARLES WHITE (American, 1918–1979)
March in New York
1950s
Black-and-white photograph
3 1/4 × 4 3/4" (8.3 × 12.1 cm)
Private collection
LN2018.1384



CHARLES WHITE (American, 1918–1979)
March in New York
1950s
Black-and-white photograph
3 1/4 × 4 3/4" (8.3 × 12.1 cm)
Private collection
LN2018.1386



CHARLES WHITE (American, 1918–1979)
March to outlaw anti-Semitism
1950s
Black-and-white photograph
3 3/8 × 4 1/2" (8.6 × 11.4 cm)
Private collection
LN2018.1385



CHARLES WHITE (American, 1918–1979)
Margaret Burroughs
1950s
Black-and-white photograph
3 3/8 × 4 3/4" (8.6 × 12.1 cm)
Private collection
LN2018.1372



CHARLES WHITE (American, 1918–1979)
Miriam Makeba
1950s
Black-and-white photograph
4 1/2 × 6 1/2" (11.4 × 16.5 cm)
Private collection
LN2018.1375



CHARLES WHITE (American, 1918–1979)
Newsstand and pedestrians
1950s
Black-and-white photograph
3 1/16 × 4 1/4" (7.8 × 10.8 cm)
Private collection
LN2018.1381



CHARLES WHITE (American, 1918–1979)
Protest onlookers
1950s
Black-and-white photograph
3 1/4 × 4 1/2" (8.3 × 11.4 cm)
Private collection
LN2018.1387



CHARLES WHITE (American, 1918–1979)
Roy DeCarava
1950s
Black-and-white photograph
3 1/4 × 4 5/8" (8.3 × 11.7 cm)
Private collection
LN2018.1374



CHARLES WHITE (American, 1918–1979)
Street artist
1950s
Black-and-white photograph
3 1/16 × 4 1/4" (7.8 × 10.8 cm)
Private collection
LN2018.1378



CHARLES WHITE (American, 1918–1979)
Woman reading Jet magazine
1952
Black-and-white photograph
3 1/16 × 4 1/4" (7.8 × 10.8 cm)
Private collection
LN2018.1383



CHARLES WHITE (American, 1918–1979)
Brother John Sellers Sings Blues and Folk Songs
1954
Vinyl record cover
Cover: 12 1/4 × 12 1/4" (31.1 × 31.1 cm)
The Museum of Modern Art, New York
LN2018.1350



CHARLES WHITE (American, 1918–1979)
Jimmy Rushing Sings the Blues
1955
Vinyl record cover
Cover: 10 1/4 × 10 1/4" (26 × 26 cm)
The Museum of Modern Art, New York
LN2018.1351



CHARLES WHITE (American, 1918–1979)
Sir Charles Thompson Trio
1955
Vinyl record cover
Cover: 10 1/4 × 10 1/4" (26 × 26 cm)
The Museum of Modern Art, New York
LN2018.1352



CHARLES WHITE (American, 1918–1979)
Harry Belafonte and Mr. and Mrs. David Stone Martin
1957
Black-and-white photograph
3 1/4 × 4 1/2" (8.3 × 11.4 cm)
Private collection
LN2018.1376



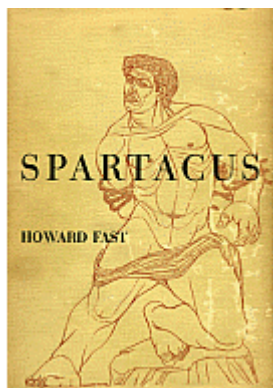
CHARLES WHITE (American, 1918–1979)
Eartha Kitt (from Anna Lucasta)
1958
Wolff crayon over traces of brown pencil on illustration board
48 5/8 x 27 1/8" (123.5 x 68.9 cm)
Private collection
LN2018.1340



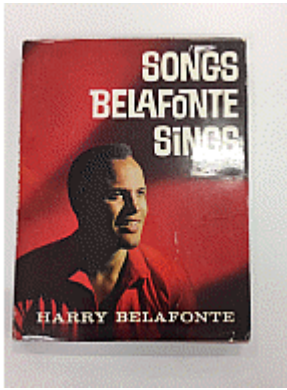
CHARLES WHITE (American, 1918–1979)
Rex Ingram, Fred O'Neal, and Georgia Burke (from Anna Lucasta)
1958
Wolff crayon on board
40 7/8 x 32 1/8" (103.8 x 81.6 cm)
The Davidsons, Los Angeles, California
LN2018.1320



CHARLES WHITE (American, 1918–1979)
Sammy Davis Jr. (from Anna Lucasta)
1958
Charcoal on board
54 x 32" (137.2 x 81.3 cm)
David C. Driskell Center for the Study of the Visual Arts and Culture of African Americans and the African Diaspora, University of Maryland, Gift from the Sandra and Lloyd Baccus Collection
LN2018.1321



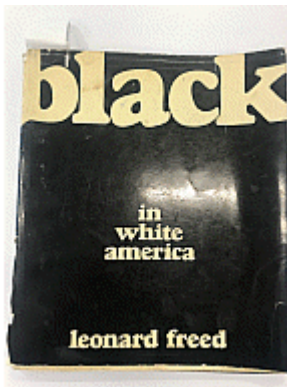
CHARLES WHITE (American, 1918–1979)
Spartacus
1951
Hardcover book
LN2018.1488



CHARLES WHITE (American, 1918–1979)
Songs Belafonte Sings
1962
Hardcover book
11 1/4 × 8 3/4 × 1" (28.6 × 22.2 × 2.5 cm)
The Museum of Modern Art, New York
LN2018.1354



CHARLES WHITE (American, 1918–1979)
Contemporary American Masterpieces: Gould: Spirituals for Orchestra; Copland: Dance Symphony; Chicago Symphony Orchestra, Morton Gould conducting
1965
Vinyl record cover
Cover: 12 1/4 × 12 1/4" (31.1 × 31.1 cm)
The Museum of Modern Art, New York
LN2018.1349



LEONARD FREED (American, 1929–2006)
Black in White America
1968
Softcover book
10 1/4 × 9 1/4" (26 × 23.5 cm)
Private collection
LN2018.1367



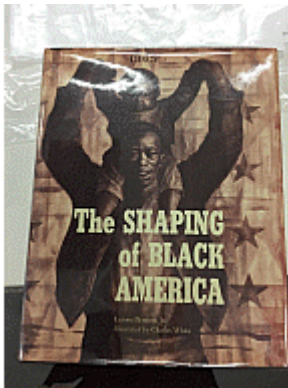
CHARLES WHITE (American, 1918–1979)
Ceramic sculpture
1968
Ceramic, paint, and twigs
14 1/2 × 12 1/2 × 12 1/2" (36.8 × 31.8 × 31.8 cm)
Private collection
LN2018.1359



CHARLES WHITE (American, 1918–1979)
Ceramic sculpture
1968
Ceramic and paint
15 3/4 × 9 3/4 × 4" (40 × 24.8 × 10.2 cm)
Private collection
LN2018.1360



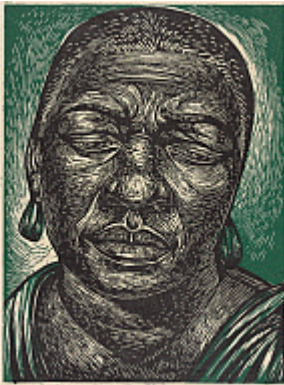
CHARLES WHITE (American, 1918–1979)
Two untitled drawings for ceramics
c. 1968
Felt-tip pen, ink, and pencil on paper
Each 8 1/2 × 11" (21.6 × 27.9 cm)
Private collection
LN2018.1361.1-2



CHARLES WHITE (American, 1918–1979)
The Shaping of Black America
1975
Hardcover book
9 3/4 × 7 3/4 × 1 1/4" (24.8 × 19.7 × 3.2 cm)
The Museum of Modern Art, New York
LN2018.1353



CHARLES WHITE (American, 1918–1979)
Bessie Smith
1950
Tempera on panel
24 15/16 × 20" (63.3 × 50.8 cm)
Private collection
LN2018.1303



CHARLES WHITE (American, 1918–1979)
Bessie Smith
1954
Linoleum cut
17 1/2 × 11 15/16" (44.5 × 30.3 cm)
Harvard Art Museums/Fogg Museum, Bequest of William S. Lieberman, by
exchange
LN2018.1317



CHARLES WHITE (American, 1918–1979)
Mahalia
1955
Charcoal and Conté crayon on board
44 7/8 × 35 1/16" (114 × 89 cm) (approx.)
Collection Pamela and Harry Belafonte
LN2018.1358



CHARLES WHITE (American, 1918–1979)
Folksinger (Voice of Jericho: Portrait of Harry Belafonte)
1957
Ink and colored ink with white additions on board
52 × 34" (132.1 × 86.4 cm)
Collection Pamela and Harry Belafonte
LN2018.1319



CHARLES WHITE (American, 1918–1979)

Awaken from the Unknowing

1961

Compressed and brown and gray vine charcoal with scratching out, blending, and erasing on cold-pressed illustration board

31 x 56" (78.7 x 142.2 cm)

Blanton Museum of Art, The University of Texas at Austin, Gift of Susan G. and Edmund W. Gordon to the units of Black Studies and the Blanton Museum of Art at The University of Texas at Austin

LN2018.1338



CHARLES WHITE (American, 1918–1979)

J'Accuse #1

1965

Charcoal and Wolff crayon on illustration board

48 x 31 11/16" (121.9 x 80.4 cm)

Private collection

LN2018.1346



CHARLES WHITE (American, 1918–1979)

J'Accuse #10 (Negro Woman)

1966

Charcoal on paper

34 7/16 x 34 5/16" (87.5 x 87.2 cm)

Image: 28 x 28" (71.1 x 71.1 cm)

Courtesy Charles M. Young Fine Prints & Drawings, LLC, Portland, CT

LN2018.1489



CHARLES WHITE (American, 1918–1979)

J'Accuse #6

1966

Charcoal on paper

42 x 52" (106.7 x 132.1 cm)

Private collection

LN2018.1324



CHARLES WHITE (American, 1918–1979)

J'Accuse #7

1966

Charcoal on paper

39 1/4 × 51 1/2" (99.7 × 130.8 cm)

Private collection

LN2018.1344



CHARLES WHITE (American, 1918–1979)

Birmingham Totem

1964

Ink and charcoal on paper

71 7/16 × 40 1/16" (181.5 × 101.8 cm)

Frame: 74 × 42 × 2" (188 × 106.7 × 5.1 cm)

High Museum of Art, Purchase with funds from Edith G. and Philip A. Rhodes and the National Endowment for the Arts

LN2018.1339



CHARLES WHITE (American, 1918–1979)

General Moses (Harriet Tubman)

1965

Ink on paper

47 × 68" (119.4 × 172.7 cm)

Private collection

LN2018.1323



CHARLES WHITE (American, 1918–1979)

Nat Turner, Yesterday, Today, Tomorrow

1968

Drybrush and ink on board

51 × 78" (129.5 × 198.1 cm)

National Center of Afro-American Artists

LN2018.1325



CHARLES WHITE (American, 1918–1979)

Study for Nat Turner, Yesterday, Today, Tomorrow

1968

Charcoal, oil wash, over pencil on board

41 3/4 × 46 7/8" (106 × 119 cm)

Collection Hudgins Family



CHARLES WHITE (American, 1918–1979)
Golden State Mutual Life Insurance Company Annual Calendar
1969
Printed calendar
Charles E. Young Research Library. UCLA Library Special Collections
LN2018.1363.2



CHARLES WHITE (American, 1918–1979)
Dream Deferred II
1969
Oil wash, ink and Wolff crayon on paper
48 3/4 × 70 1/8" (123.8 × 178.1 cm)
Collection of the Colby College Museum of Art, The Lunder Collection
LN2018.1326



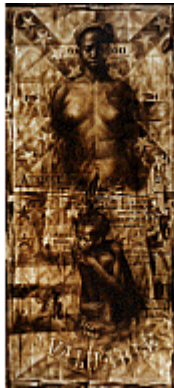
CHARLES WHITE (American, 1918–1979)
Elmina Castle
1969
Ink on board
64 1/2 × 32 1/2" (163.8 × 82.6 cm)
Private collection
LN2018.1328



CHARLES WHITE (American, 1918–1979)
Seed of Love
1969
Ink on paper
51 × 36" (129.5 × 91.4 cm)
Los Angeles County Museum of Art, Museum Acquisition Fund
LN2018.1327



CHARLES WHITE (American, 1918–1979)
She Does Not Know Her Beauty
1969
Oil wash on board
40 × 28" (101.6 × 71.1 cm)
Mott-Warsh Collection, Flint, Michigan
LN2018.1347



CHARLES WHITE (American, 1918–1979)
Wanted Poster Series #6
1969
Oil wash brushed and stenciled with masking out over traces of graphite pencil on commercial laminated board
59 3/4 × 39 15/16" (151.8 × 101.4 cm)
Blanton Museum of Art, The University of Texas at Austin, Gift of Susan G. and Edmund W. Gordon to the units of Black Studies and the Blanton Museum of Art at The University of Texas at Austin
LN2018.1343



CHARLES WHITE (American, 1918–1979)
Wanted Poster Series #10
1970
Oil wash brushed and stenciled with masking out over traces of graphite pencil on commercial laminated board
39 15/16 × 59 3/4" (101.4 × 151.8 cm)
Blanton Museum of Art, The University of Texas at Austin, Gift of Susan G. and Edmund W. Gordon to the units of Black Studies and the Blanton Museum of Art at The University of Texas at Austin
LN2018.1329



CHARLES WHITE (American, 1918–1979)

Wanted Poster Series #17

1971

Oil wash and pencil on poster board

60 × 30" (152.4 × 76.2 cm)

Collection of the Flint Institute of Arts, Flint, Michigan, Gift of Mr. and Mrs. B. Morris Pelavin

LN2018.1330



CHARLES WHITE (American, 1918–1979)

Harriet

1972

Oil wash on board

53 5/16 × 47 1/4" (135.4 × 120 cm)

Frame: 55 3/8 × 49 1/4 × 1 1/2" (140.7 × 125.1 × 3.8 cm)

John L. Warfield Center for African and African American Studies, The University of Texas at Austin

LN2018.1341



CHARLES WHITE (American, 1918–1979)

Cat's Cradle

1972

Etching

23 3/4 × 26" (60.3 × 66 cm)

Private collection

LN2018.1331



CHARLES WHITE (American, 1918–1979)

Mississippi

1972

Oil wash on board

59 13/16 × 47 1/4" (151.9 × 120 cm)

Private collection

LN2018.1342



CHARLES WHITE (American, 1918–1979)
Missouri C
1972
Etching
plate 19 13/16 x 35 9/16" (50.3 x 90.4 cm)
sheet 27 9/16 x 39 3/8" (70.1 x 100 cm)
Purchase: The Museum of Modern Art, New York
235.1976



CHARLES WHITE (American, 1918–1979)
Black Pope (Sandwich Board Man)
1973
Oil wash on board
60 x 43 7/8" (152.4 x 111.4 cm)
Richard S. Zeisler Bequest (by exchange), The Friends
of Education of The Museum of Modern Art, Committee
on Drawings Fund, Dian Woodner, and Agnes Gund,
The Museum of Modern Art, New York
36.2013



CHARLES WHITE (American, 1918–1979)
Study for Black Pope
c. 1973
Graphite, pastel, and crayon on transparentized paper
17 1/2 x 21 3/4" (44.5 x 55.2 cm)
Acquired through the generosity of Kathy and Richard
S. Fuld, Jr. in honor of Esther Adler, The Museum of
Modern Art, New York
551.2017



CHARLES WHITE (American, 1918–1979)
Banner for Willy J.
1976
Oil on canvas
58 x 50" (147.3 x 127 cm)
Frame: 60 3/8 x 52 3/4 x 1 1/2" (153.4 x 134 x 3.8 cm)
Mr. and Mrs. Richard Wyatt, Sr.
LN2018.1332



CHARLES WHITE (American, 1918–1979)

Sound of Silence

1978

Lithograph

25 1/8 × 35 5/16" (63.8 × 89.7 cm)

The Art Institute of Chicago, Margaret Fisher Fund LN2018.1334