

If Everything Is Sculpture Why Make Sculpture? Artist's Choice: Peter Fischli (June 2018 - spring 2019)



Robert Breer (American, 1926–2011)

Osaka I

1970

Fiberglass shell, steel frame, battery-driven motor, and rubber-tire wheels

6' 1" (185.3 cm) high x 6' 1 1/8" (185.6 cm) in diameter

Gift of PepsiCo, Inc.

378.1971.a-b



Mary Callery (American, 1903–1977)

Horse

1942

Bronze

49 1/8 x 34 3/8" (124.8 x 87.3 cm), base 37 1/4" (94.4 cm) in diameter

Purchase

256.1944



Herbert Ferber (American, 1906–1991)

Roof Sculpture with S Curve, II

1954 (cast 1969)

Bronze

49 3/8 x 60 x 26 3/4" (125.4 x 152.4 x 67.8 cm), at base 45 3/8 x 21 3/4" (115.1 x 55.1 cm)

Given anonymously

1080.1969

Peter Fischli (Swiss, born 1952)

Untitled Aspen Wall Nr. 6

2017 and 2018

Rubber, steel plate, anchors, metal framing, screws, fiberglass mat sheathing, corner bead, exterior joint compound, liquid vapor barrier, elastomeric paint

96 x 144 x 24" (243.8 x 365.8 x 61 cm)

Courtesy the artists

CE2018.34



Peter Fischli (Swiss, born 1952)

Brochure Box

2017

Bronze

14 3/16 x 12 3/8 x 3 1/8" (36 x 31.5 x 8 cm)

Courtesy the artist

LN2018.1036



Peter Fischli (Swiss, born 1952)

Brochure Box

2017

Bronze

40 3/16 x 12 3/8 x 3 1/8" (102.1 x 31.4 x 7.9 cm)

Courtesy the artist

LN2018.1037



Peter Fischli (Swiss, born 1952)

Brochure Box

2017

Bronze

14 3/16 x 12 3/8 x 3 1/8" (36 x 31.4 x 7.9 cm)

Courtesy the artist

LN2018.1038



Katharina Fritsch (German, born 1956)

Yellow Madonna from Group of Figures

2006-08 (fabricated 2010-11)

Bronze, copper, and stainless steel, lacquered

Dimensions variable

Gift of Maja Oeri and Hans Bodenmann (Laurenz Foundation)

598.2009



Isa Genzken (German, born 1948)

Rose II

2007

Stainless steel, aluminum, and lacquer

36' x 9' 6" x 42" (1097.3 x 289.6 x 106.7 cm)

Gift of Alfred H. Barr, Jr., and gift of the Advisory Committee (both by exchange)

249.2014



Hector Guimard (French, 1867–1942)

Entrance Gate to Paris Subway (Métropolitain) Station
Paris, France

c. 1900

Painted cast iron, glazed lava, and glass

13' 11" x 17' 10" x 32" (424.2 x 543.6 x 81.3 cm)

Each vertical stanchion: 1040 lbs. Horizontal component: 460 lbs.

Glazed lava sign: 100 lbs.

Gift of Régie Autonome des Transports Parisiens

177.1958.a-f



Aristide Maillol (French, 1861–1944)

The Mediterranean

1902-05 (cast c. 1951-53)

Bronze

41 x 45 x 29 3/4" (104.1 x 114.3 x 75.6 cm)

Gift of Stephen C. Clark

173.1953



Aristide Maillol (French, 1861–1944)

The River

Begun 1938-39; completed 1943 (cast 1948)

Lead

53 3/4" x 7' 6" x 66" (136.5 x 228.6 x 167.7 cm), on lead base
designed by the artist 9 3/4" x 67 x 27 3/4" (24.8 x 170.1 x 70.4 cm)

Mrs. Simon Guggenheim Fund

697.1949



Henri Matisse (French, 1869–1954)

The Back (I)

Paris, Couvent du Sacré Coeur, and Issy-les-Moulineaux, spring 1908-late 1909

Bronze

6' 2 3/8" x 44 1/2" x 6 1/2" (188.9 x 113 x 16.5 cm)

Mrs. Simon Guggenheim Fund

4.1952



Henri Matisse (French, 1869–1954)

The Back (II)

Issy-les-Moulineaux, 1911 (?) - early March or April 1913

Bronze

6' 2 1/4" x 47 5/8" x 6" (188.5 x 121 x 15.2 cm)

Mrs. Simon Guggenheim Fund

240.1956



Henri Matisse (French, 1869–1954)

The Back (III)

Issy-les-Moulineaux, by May 13, 1913 - early fall 1916

Bronze

6' 2 1/2" x 44" x 6" (189.2 x 112.4 x 15.2 cm)

Mrs. Simon Guggenheim Fund

5.1952



Elie Nadelman (American, born Poland. 1882–1946)

Man in the Open Air

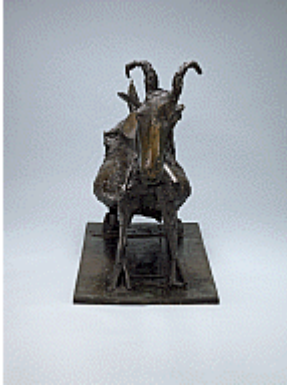
c. 1915

Bronze

54 1/2" (138.4 cm) high, 11 3/4 x 21 1/2" (29.9 x 54.6 cm) at base

Gift of William S. Paley (by exchange)

259.1948



Pablo Picasso (Spanish, 1881–1973)

She-Goat

Vallauris, 1950 (cast 1952)

Bronze

46 3/8 x 56 3/8 x 28 1/8" (117.7 x 143.1 x 71.4 cm)

Mrs. Simon Guggenheim Fund

611.1959



Tony Smith (American, 1912–1980)

Moondog

1964 (fabricated 1998)

Painted aluminum

17' 1 1/4" x 15' 8 1/2" x 13' 7 1/4" (521.3 x 478.8 x 414.7 cm)

Gift of Agnes Gund, Helen Acheson Bequest (by exchange), and Thomas W. Weisel Fund

154.1998



William Tucker (American, born Egypt 1935)

Gymnast, II

1984 (cast 1985)

Bronze

6' 5" x 6' 2" x 31" (195.6 x 188 x 78.8 cm)

Anne and Sid Bass and Blanchette Hooker Rockefeller Funds

159.1986



Ben Vautier (French, born Italy. 1935)

si tout est sculpture pourquoi faire de la sculpture

1995/2018

[paint on board]

[Collection of the artist]

LN2018.1031



David Weiss (Swiss, 1946–2012)

Snowman

1987/2016

Copper, aluminum, glass, water, coolant system

85 13/16 x 50 3/8 x 64 15/16" (218 x 128 x 165 cm)

Peter Fischli and David Weiss, Courtesy Matthew Marks Gallery
LN2018.1030



Franz West (Austrian, 1947–2012)

Lotus

2006

Polyester

65 3/8 x 6' 10 5/8" x 9' 6 1/8" (166 x 210 x 290 cm)

Scott Burton Fund

11.2007



Franz West (Austrian, 1947–2012)

Maya's Dream

2006

Polyester

8' 2 7/16" x 8' 6 3/8" x 70 7/8" (250 x 260 x 180 cm)

Scott Burton Fund

12.2007