

### Betye Saar: The Legends of Black Girl's Window

The Museum of Modern Art, New York October 21, 2019-January 04, 2020  
11w53, On View, 2nd Floor, South Gallery

---



BETYE SAAR (American, born 1926)

*In the Dell*

1960

Etching

plate: 10 × 14 15/16" (25.4 × 38 cm); sheet (irreg.): 11 11/16 × 17 1/8" (29.7 × 43.5 cm)

The Museum of Modern Art, New York. The Candace King Weir Endowment for Women Artists



BETYE SAAR (American, born 1926)

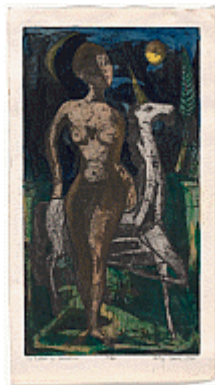
*Samsara*

1960

Etching with relief printing and embossing

plate: 14 13/16 × 15 15/16" (37.7 × 40.5 cm); sheet: 17 3/16 × 17 15/16" (43.6 × 45.6 cm)

The Museum of Modern Art, New York. The Candace King Weir Endowment for Women Artists



BETYE SAAR (American, born 1926)

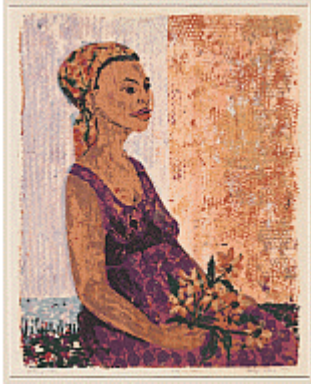
*To Catch a Unicorn*

1960

Etching and aquatint with watercolor additions

plate: 14 3/4 × 8" (37.5 × 20.3 cm); sheet: 16 3/4 × 9 7/16" (42.6 × 24 cm)

The Museum of Modern Art, New York. The Candace King Weir Endowment for Women Artists



BETYE SAAR (American, born 1926)

*Anticipation*

1961

Screenprint

composition (irreg.): 18 1/8 × 14 7/16" (46.1 × 36.7 cm); sheet: 21 11/16 × 16 15/16" (55.1 × 43.1 cm)

The Museum of Modern Art, New York. The Candace King Weir Endowment for Women Artists



BETYE SAAR (American, born 1926)

*Les Enfants d'Obscurité*

1961

Etching and aquatint

plate: 14 15/16 × 14 7/8" (38 × 37.8 cm); sheet: 16 3/4 × 16 3/16" (42.6 × 41.1 cm)

The Museum of Modern Art, New York. Gift of Lezley Saar and Agust Agustsson



BETYE SAAR (American, born 1926)

*Lo, The Pensive Peninsula*

1961

Etching

plate (slightly irreg.): 14 15/16 × 19 11/16" (38 × 50 cm); sheet (irreg.): 16 5/16 × 21 9/16" (41.5 × 54.7 cm)

The Museum of Modern Art, New York. The Candace King Weir Endowment for Women Artists



BETYE SAAR (American, born 1926)

*Two of Every Sort*

c. 1966

Etching

plate: 11 3/4 × 17 11/16" (29.8 × 45 cm); sheet: 13 1/8 × 20" (33.3 × 50.8 cm)

The Museum of Modern Art, New York. The Candace King Weir Endowment for Women Artists



BETYE SAAR (American, born 1926)

*Amid Hallucinatory Moons*

1962

Etching with relief printing

plate: 14 15/16 × 19 3/16" (37.9 × 48.8 cm); sheet: 16 5/16 × 20 7/8" (41.4 × 53.1 cm)

The Museum of Modern Art, New York. Gift of Julie and Bennett Roberts, Roberts Projects, Los Angeles



BETYE SAAR (American, born 1926)

*The Wounded Wilderness*

1962

Etching with relief printing

plate: 23 7/8 × 14 15/16" (60.6 × 37.9 cm); sheet: 25 9/16 × 16 5/8" (64.9 × 42.3 cm)

The Museum of Modern Art, New York. Gift of Julie and Bennett Roberts, Roberts Projects, Los Angeles



BETYE SAAR (American, born 1926)

*Flight*

1963

Screenprint

composition (irreg.): 14 9/16 × 18 1/8" (37 × 46 cm); sheet (irreg.): 17 15/16 × 24 1/8" (45.5 × 61.2 cm)

The Museum of Modern Art, New York. Gift of Julie and Bennett Roberts, Roberts Projects, Los Angeles



BETYE SAAR (American, born 1926)

*Black Angus Meets Big Brahma*

1964

Etching with relief-printed found object

composition (irreg.): 17 13/16 × 26 5/8" (45.3 × 67.7 cm); sheet (irreg.): 19 9/16 × 28 7/8" (49.7 × 73.3 cm)

The Museum of Modern Art, New York. Gift of Alison Saar and Thomas Leeser



BETYE SAAR (American, born 1926)

*Enchantress and Twilight Bird*

1964

Etching and aquatint with blind embossing

plate: 19 × 15 1/4" (48.2 × 38.7 cm); sheet: 22 3/16 × 17 9/16" (56.3 × 44.6 cm)

The Museum of Modern Art, New York. Gift of Julie and Bennett Roberts, Roberts Projects, Los Angeles



BETYE SAAR (American, born 1926)

*Enfant in the Garden*

1964

Etching

plate: 9 15/16 × 17 15/16" (25.2 × 45.6 cm); sheet (irreg.): 12 1/4 × 19 1/2" (31.1 × 49.6 cm)

The Museum of Modern Art, New York. Gift of Julie and Bennett Roberts, Roberts Projects, Los Angeles



BETYE SAAR (American, born 1926)

*Girl Children*

1964

Etching

plate: 17 11/16 × 13 9/16" (44.9 × 34.5 cm); sheet: 19 5/16 × 15 3/16" (49 × 38.5 cm)

The Museum of Modern Art, New York. The Candace King Weir Endowment for Women Artists



BETYE SAAR (American, born 1926)

*Mystic Chart for an Unemployed Sorceress*

1964

Etching and aquatint

plate: 17 15/16 × 13 3/4" (45.6 × 35 cm); sheet: 19 3/4 × 15 11/16" (50.2 × 39.9 cm)

The Museum of Modern Art, New York. The Candace King Weir Endowment for Women Artists



BETYE SAAR (American, born 1926)

*Not All Turtles Sing*

1964

Etching

plate: 11 7/8 × 14 13/16" (30.1 × 37.7 cm); sheet (irreg.): 13 1/4 × 17 5/16" (33.7 × 44 cm)

The Museum of Modern Art, New York. Gift of Alison Saar and Thomas Leeser



BETYE SAAR (American, born 1926)

*Rojo Toro*

1964

Etching

plate: 17 15/16 × 21 7/8" (45.6 × 55.5 cm); sheet: 19 9/16 × 23 11/16" (49.7 × 60.2 cm)

The Museum of Modern Art, New York. The Candace King Weir Endowment for Women Artists



BETYE SAAR (American, born 1926)

*Sorceress with Seven Assorted Birds*

1964

Etching and aquatint

plate: 14 9/16 × 12 1/8" (37 × 30.8 cm); sheet: 17 1/8 × 13 1/4" (43.5 × 33.7 cm)

The Museum of Modern Art, New York. Gift of Lezley Saar and Agust Agustsson



BETYE SAAR (American, born 1926)

*The Beastie Parade*

1964

Etching and aquatint with hand additions

plate: 5 1/16 × 14 7/8" (12.9 × 37.8 cm); sheet (irreg.): 6 7/8 × 16 7/16" (17.4 × 41.7 cm)

The Museum of Modern Art, New York. The Candace King Weir Endowment for Women Artists



BETYE SAAR (American, born 1926)

*The Big Beastie Parade*

1964

Etching

plate: 17 13/16 × 21 7/16" (45.2 × 54.5 cm); sheet: 19 1/2 × 6 9/16" (49.5 × 16.6 cm)

The Museum of Modern Art, New York. Gift of Alison Saar and Thomas Leiser



BETYE SAAR (American, born 1926)

*The Quick & the Dead*

1964

Etching and collagraph with hand additions and embossing with stamped ink

plate: 12 5/16 × 29 15/16" (31.3 × 76.1 cm); sheet: 13 7/16 × 30 7/8" (34.1 × 78.5 cm)

The Museum of Modern Art, New York. The Candace King Weir Endowment for Women Artists



BETYE SAAR (American, born 1926)

*He Who...*

1965

Etching with relief-printed found objects

plate (irreg.): 4 5/16 × 5 1/16" (10.9 × 12.9 cm); sheet (irreg.): 6 5/16 × 8 1/4" (16 × 21 cm)

The Museum of Modern Art, New York. The Candace King Weir Endowment for Women Artists



BETYE SAAR (American, born 1926)

*Lo, The Mystique City*

1965

Etching and aquatint with relief-printed found objects

plate (irreg.): 18 1/2 × 19 13/16" (47 × 50.4 cm); sheet: 19 13/16 × 22 15/16" (50.3 × 58.3 cm)

The Museum of Modern Art, New York. The Candace King Weir Endowment for Women Artists



BETYE SAAR (American, born 1926)  
*Summer Symbol*  
1965  
Etching with relief printing  
plate: 16 9/16 × 14 13/16" (42.1 × 37.6 cm); sheet (irreg.): 18 3/4 × 16 5/16"  
(47.6 × 41.4 cm)  
The Museum of Modern Art, New York. Gift of Julie and Bennett Roberts,  
Roberts Projects, Los Angeles



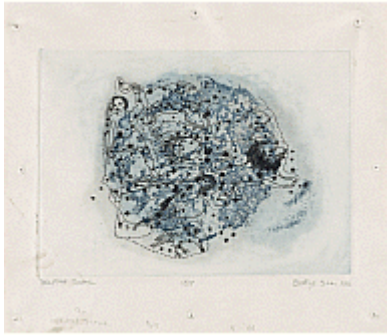
BETYE SAAR (American, born 1926)  
*The Man from Phrenology*  
1965  
Etching  
plate: 14 13/16 × 9 13/16" (37.7 × 25 cm); sheet (irreg.): 17 11/16 × 12 5/8"  
(44.9 × 32.1 cm)  
The Museum of Modern Art, New York. The Candace King Weir Endowment for  
Women Artists



BETYE SAAR (American, born 1926)  
*The Mystic Flag*  
1965  
Etching with relief printing and relief-printed found objects  
plate (irreg.): 3 3/8 × 5 7/8" (8.6 × 15 cm); sheet (irreg.): 5 5/8 × 8 9/16" (14.3 ×  
21.7 cm)  
The Museum of Modern Art, New York. Gift of Tracye and Francis Cavanaugh



BETYE SAAR (American, born 1926)  
*The Mystic Window #1*  
1965  
Wooden window frame with cut-and-pasted printed paper and paper with ink,  
pencil and felt-tip pen  
22 × 32 1/2 × 1 5/16" (55.8 × 82.55 × 3.3 cm)  
Collection halley k harrisburg and Michael Rosenfeld, New York



BETYE SAAR (American, born 1926)

*Celestial Scene*

1966

Etching

plate: 8 15/16 × 12 1/16" (22.7 × 30.6 cm); sheet: 13 1/16 × 15" (33.2 × 38.1 cm)

The Museum of Modern Art, New York. Committee on Drawings and Prints Fund



BETYE SAAR (American, born 1926)

*House of Tarot*

1966

Etching with relief printing and relief-printed and embossed found objects

plate: 17 11/16 × 23 3/4" (45 × 60.4 cm); sheet: 19 15/16 × 27 9/16" (50.6 × 70 cm)

The Museum of Modern Art, New York. Acquired through the generosity of The Friends of Education of The Museum of Modern Art in honor of Marquita Pool-Eckert



BETYE SAAR (American, born 1926)

*Mystic Window for Leo*

1966

Wooden window frame with cut-and-pasted paper and printed paper with ink, colored pencil and embossing

14 1/4 × 17 3/4" (36.2 × 45.1 cm)

Collection Meghan R. Cavanaugh, Los Angeles



BETYE SAAR (American, born 1926)

*Palm of Love*

1966

Etching with relief printing

plate: 17 15/16 × 23 3/4" (45.6 × 60.3 cm); sheet: 19 1/16 × 26 1/16" (48.4 × 66.2 cm)

The Museum of Modern Art, New York. Committee on Drawings and Prints Fund





BETYE SAAR (American, born 1926)  
*Phrenology Man Digs Sol y Luna*

1966

Etching with relief-printed found objects

composition: 14 5/8 × 15" (37.1 × 38.1 cm); sheet (irreg.): 17 3/8 × 17 1/2" (44.1 × 44.5 cm)

The Museum of Modern Art, New York. Acquired through the generosity of The Friends of Education of The Museum of Modern Art in honor of Eric J. Barkley



BETYE SAAR (American, born 1926)  
*The Mystic Galaxy*

1966

Etching with relief-printed found objects

plate: 17 1/2 × 8 1/4" (44.5 × 20.9 cm); sheet: 19 15/16 × 10 7/8" (50.7 × 27.7 cm)

The Museum of Modern Art, New York. Gift of Alison Saar and Thomas Leaser



BETYE SAAR (American, born 1926)  
*The Phrenologist's Window II*

1966

Wooden window frame with cut-and-pasted printed paper, acrylic paint and found objects on board

18 1/2 × 29 3/4 × 1" (47 × 75.6 × 2.5 cm)

Private collection, Los Angeles, courtesy Roberts Projects, Los Angeles



BETYE SAAR (American, born 1926)  
*Winter Symbol*

1966

Etching

composition: 16 3/8 × 14 13/16" (41.6 × 37.7 cm); sheet: 19 1/2 × 17 3/8" (49.6 × 44.1 cm)

The Museum of Modern Art, New York. Committee on Drawings and Prints Fund



BETYE SAAR (American, born 1926)

*Omen*

1967

Wooden box with cut-and-pasted printed paper, fabric, photograph, foil, glass shards, photocopy transparency, letterpress type, acrylic paint and found objects

12 13/16 × 9 1/4 × 3 1/8" (32.5 × 23.5 × 7.9 cm)

Collection Candace King Weir



BETYE SAAR (American, born 1926)

*The Palmist Window*

1967

Wooden window frame with cut-and-pasted printed paper and fabric with charcoal and acrylic paint

24 × 28 × 1 1/4" (61 × 71.1 × 3.2 cm)

Collection halley k harrisburg and Michael Rosenfeld, New York



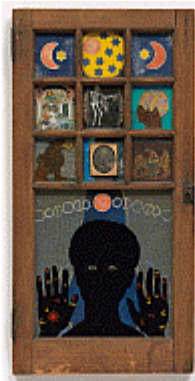
BETYE SAAR (American, born 1926)

*Sketchbook with a drawing of lion devouring sun*

1968-1969

6 1/2 × 4" (16.5 × 10.2 cm)

Collection Betye Saar, courtesy Roberts Projects, Los Angeles



BETYE SAAR (American, born 1926)

*Black Girl's Window*

1969

Wooden window frame with paint, cut-and-pasted printed and painted papers, daguerreotype, lenticular print, and plastic figurine

35 3/4 × 18 × 1 1/2" (90.8 × 45.7 × 3.8 cm)

The Museum of Modern Art, New York. Gift of Candace King Weir through The Modern Women's Fund, and Committee on Painting and Sculpture Funds



BETYE SAAR (American, born 1926)

*Fiesta of the Dead*

1969

Wooden box with mirror, printed wood, acrylic paint, cut-and-pasted paper and found objects

9 3/4 × 14 1/2 × 1 3/4" (24.8 × 36.8 × 4.4 cm)

Collection Candace King Weir



BETYE SAAR (American, born 1926)

*Leather bound brown sketchbook with drawings*

1969

closed: 8 1/2 × 6" (21.6 × 15.2 cm)

Collection Betye Saar, courtesy Roberts Projects, Los Angeles



BETYE SAAR (American, born 1926)

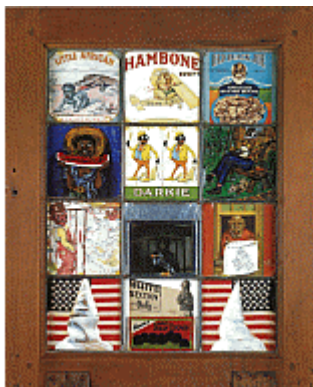
*Untitled (Two White Skeletons)*

1969

Mixed media on polaroid

7.25 × 3.25" (18.4 × 8.3 cm)

Collection Betye Saar, courtesy Roberts Projects, Los Angeles



BETYE SAAR (American, born 1926)

*Black Crows in the White Section Only*

1972

Wooden window frame with cut-and-pasted printed paper and fabric with gouache, stamped ink, and found objects

22 × 18 × 1 3/4" (55.9 × 45.7 × 4.4 cm)

Collection halley k harrisburg and Michael Rosenfeld, New York



BETYE SAAR (American, born 1926)

*Let Me Entertain You*

1972

Wooden window frame with cut-and-pasted printed and painted paper, photocopy transparency, and wood veneer with found object

14 3/4 x 24 x 1 3/4" (37.5 x 61 x 4.4 cm)

National Afro-American Museum and Cultural Center, Wilberforce, Ohio



BETYE SAAR (American, born 1926)

*"Keep for Old Memiors"*

1976

Pencil on paper, printed papers, and printed fabric sewn and pasted on fabric with lace, leaves, and feathers, mounted on painted frame with gloves

15 1/2 x 13" (39.4 x 33 cm)

The Museum of Modern Art, New York. Gift of Jo Carole and Ronald S. Lauder



SUZANNE BAUMAN

*Spirit Catcher: The Art of Betye Saar*

From the series *The Originals: Women in Art*

1977

1 videocassette, 30 min.

Courtesy WNET



BETYE SAAR (American, born 1926)

*Copper objects used in soft-ground etching*



BETYE SAAR (American, born 1926)  
*Gold paper butterfly used in soft-ground etching*  
4 × 2" (10.2 × 5.1 cm)  
Collection Betye Saar, courtesy Roberts Projects, Los Angeles



BETYE SAAR (American, born 1926)  
*Gold paper fish used in soft-ground etching*  
3 × 1" (7.6 × 2.5 cm)  
Collection Betye Saar, courtesy Roberts Projects, Los Angeles



BETYE SAAR (American, born 1926)  
*Plate for He Who...*  
Etched copper plate  
5 1/4 × 3 1/2" (13.3 × 8.9 cm)  
Collection Betye Saar, courtesy Roberts Projects, Los Angeles



BETYE SAAR (American, born 1926)  
*Plate for The Man from Phrenology and Phrenology Man Digs Sol Y Luna*  
Etched zinc plate  
12 3/4 × 8" (32.4 × 20.3 cm)  
Collection Betye Saar, courtesy Roberts Projects, Los Angeles



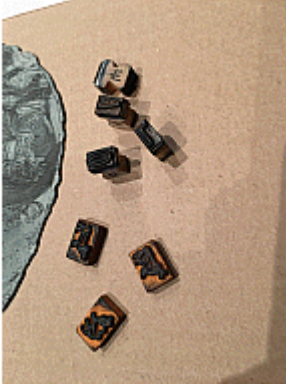
BETYE SAAR (American, born 1926)

*Power's Bust: The Mental Faculties*

Plaster

12 1/2 × 6 1/2 × 5 3/4" (31.75 × 16.51 × 14.61 cm)

Collection Betye Saar, courtesy Roberts Projects, Los Angeles



BETYE SAAR (American, born 1926)

*Rubber stamps used in soft-ground etching*

Collection Betye Saar, courtesy Roberts Projects, Los Angeles