

Betye Saar: The Legends of Black Girl's Window

The Museum of Modern Art, New York October 21, 2019-January 04, 2020
11w53, On View, 2nd Floor, South Gallery



BETYE SAAR (American, born 1926)

In the Dell

1960

Etching

plate: 10 × 14 15/16" (25.4 × 38 cm); sheet (irreg.): 11 11/16 × 17 1/8" (29.7 × 43.5 cm)

The Museum of Modern Art, New York. The Candace King Weir Endowment for Women Artists



BETYE SAAR (American, born 1926)

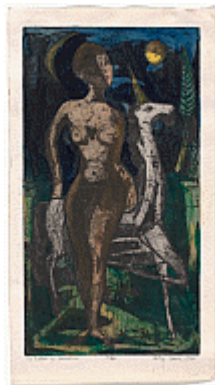
Samsara

1960

Etching with relief printing and embossing

plate: 14 13/16 × 15 15/16" (37.7 × 40.5 cm); sheet: 17 3/16 × 17 15/16" (43.6 × 45.6 cm)

The Museum of Modern Art, New York. The Candace King Weir Endowment for Women Artists



BETYE SAAR (American, born 1926)

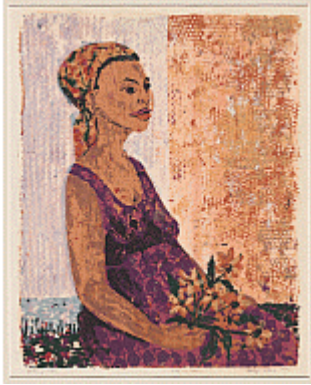
To Catch a Unicorn

1960

Etching and aquatint with watercolor additions

plate: 14 3/4 × 8" (37.5 × 20.3 cm); sheet: 16 3/4 × 9 7/16" (42.6 × 24 cm)

The Museum of Modern Art, New York. The Candace King Weir Endowment for Women Artists



BETYE SAAR (American, born 1926)

Anticipation

1961

Screenprint

composition (irreg.): 18 1/8 × 14 7/16" (46.1 × 36.7 cm); sheet: 21 11/16 × 16 15/16" (55.1 × 43.1 cm)

The Museum of Modern Art, New York. The Candace King Weir Endowment for Women Artists



BETYE SAAR (American, born 1926)

Les Enfants d'Obscurité

1961

Etching and aquatint

plate: 14 15/16 × 14 7/8" (38 × 37.8 cm); sheet: 16 3/4 × 16 3/16" (42.6 × 41.1 cm)

The Museum of Modern Art, New York. Gift of Lezley Saar and Agust Agustsson



BETYE SAAR (American, born 1926)

Lo, The Pensive Peninsula

1961

Etching

plate (slightly irreg.): 14 15/16 × 19 11/16" (38 × 50 cm); sheet (irreg.): 16 5/16 × 21 9/16" (41.5 × 54.7 cm)

The Museum of Modern Art, New York. The Candace King Weir Endowment for Women Artists



BETYE SAAR (American, born 1926)

Two of Every Sort

c. 1966

Etching

plate: 11 3/4 × 17 11/16" (29.8 × 45 cm); sheet: 13 1/8 × 20" (33.3 × 50.8 cm)

The Museum of Modern Art, New York. The Candace King Weir Endowment for Women Artists



BETYE SAAR (American, born 1926)

Amid Hallucinatory Moons

1962

Etching with relief printing

plate: 14 15/16 × 19 3/16" (37.9 × 48.8 cm); sheet: 16 5/16 × 20 7/8" (41.4 × 53.1 cm)

The Museum of Modern Art, New York. Gift of Julie and Bennett Roberts, Roberts Projects, Los Angeles



BETYE SAAR (American, born 1926)

The Wounded Wilderness

1962

Etching with relief printing

plate: 23 7/8 × 14 15/16" (60.6 × 37.9 cm); sheet: 25 9/16 × 16 5/8" (64.9 × 42.3 cm)

The Museum of Modern Art, New York. Gift of Julie and Bennett Roberts, Roberts Projects, Los Angeles



BETYE SAAR (American, born 1926)

Flight

1963

Screenprint

composition (irreg.): 14 9/16 × 18 1/8" (37 × 46 cm); sheet (irreg.): 17 15/16 × 24 1/8" (45.5 × 61.2 cm)

The Museum of Modern Art, New York. Gift of Julie and Bennett Roberts, Roberts Projects, Los Angeles



BETYE SAAR (American, born 1926)

Black Angus Meets Big Brahma

1964

Etching with relief-printed found object

composition (irreg.): 17 13/16 × 26 5/8" (45.3 × 67.7 cm); sheet (irreg.): 19 9/16 × 28 7/8" (49.7 × 73.3 cm)

The Museum of Modern Art, New York. Gift of Alison Saar and Thomas Leeser



BETYE SAAR (American, born 1926)

Enchantress and Twilight Bird

1964

Etching and aquatint with blind embossing

plate: 19 × 15 1/4" (48.2 × 38.7 cm); sheet: 22 3/16 × 17 9/16" (56.3 × 44.6 cm)

The Museum of Modern Art, New York. Gift of Julie and Bennett Roberts, Roberts Projects, Los Angeles



BETYE SAAR (American, born 1926)

Enfant in the Garden

1964

Etching

plate: 9 15/16 × 17 15/16" (25.2 × 45.6 cm); sheet (irreg.): 12 1/4 × 19 1/2" (31.1 × 49.6 cm)

The Museum of Modern Art, New York. Gift of Julie and Bennett Roberts, Roberts Projects, Los Angeles



BETYE SAAR (American, born 1926)

Girl Children

1964

Etching

plate: 17 11/16 × 13 9/16" (44.9 × 34.5 cm); sheet: 19 5/16 × 15 3/16" (49 × 38.5 cm)

The Museum of Modern Art, New York. The Candace King Weir Endowment for Women Artists



BETYE SAAR (American, born 1926)

Mystic Chart for an Unemployed Sorceress

1964

Etching and aquatint

plate: 17 15/16 × 13 3/4" (45.6 × 35 cm); sheet: 19 3/4 × 15 11/16" (50.2 × 39.9 cm)

The Museum of Modern Art, New York. The Candace King Weir Endowment for Women Artists



BETYE SAAR (American, born 1926)

Not All Turtles Sing

1964

Etching

plate: 11 7/8 × 14 13/16" (30.1 × 37.7 cm); sheet (irreg.): 13 1/4 × 17 5/16" (33.7 × 44 cm)

The Museum of Modern Art, New York. Gift of Alison Saar and Thomas Leeser



BETYE SAAR (American, born 1926)

Rojo Toro

1964

Etching

plate: 17 15/16 × 21 7/8" (45.6 × 55.5 cm); sheet: 19 9/16 × 23 11/16" (49.7 × 60.2 cm)

The Museum of Modern Art, New York. The Candace King Weir Endowment for Women Artists



BETYE SAAR (American, born 1926)

Sorceress with Seven Assorted Birds

1964

Etching and aquatint

plate: 14 9/16 × 12 1/8" (37 × 30.8 cm); sheet: 17 1/8 × 13 1/4" (43.5 × 33.7 cm)

The Museum of Modern Art, New York. Gift of Lezley Saar and Agust Agustsson



BETYE SAAR (American, born 1926)

The Beastie Parade

1964

Etching and aquatint with hand additions

plate: 5 1/16 × 14 7/8" (12.9 × 37.8 cm); sheet (irreg.): 6 7/8 × 16 7/16" (17.4 × 41.7 cm)

The Museum of Modern Art, New York. The Candace King Weir Endowment for Women Artists



BETYE SAAR (American, born 1926)

The Big Beastie Parade

1964

Etching

plate: 17 13/16 × 21 7/16" (45.2 × 54.5 cm); sheet: 19 1/2 × 6 9/16" (49.5 × 16.6 cm)

The Museum of Modern Art, New York. Gift of Alison Saar and Thomas Leiser



BETYE SAAR (American, born 1926)

The Quick & the Dead

1964

Etching and collagraph with hand additions and embossing with stamped ink

plate: 12 5/16 × 29 15/16" (31.3 × 76.1 cm); sheet: 13 7/16 × 30 7/8" (34.1 × 78.5 cm)

The Museum of Modern Art, New York. The Candace King Weir Endowment for Women Artists



BETYE SAAR (American, born 1926)

He Who...

1965

Etching with relief-printed found objects

plate (irreg.): 4 5/16 × 5 1/16" (10.9 × 12.9 cm); sheet (irreg.): 6 5/16 × 8 1/4" (16 × 21 cm)

The Museum of Modern Art, New York. The Candace King Weir Endowment for Women Artists



BETYE SAAR (American, born 1926)

Lo, The Mystique City

1965

Etching and aquatint with relief-printed found objects

plate (irreg.): 18 1/2 × 19 13/16" (47 × 50.4 cm); sheet: 19 13/16 × 22 15/16" (50.3 × 58.3 cm)

The Museum of Modern Art, New York. The Candace King Weir Endowment for Women Artists



BETYE SAAR (American, born 1926)

Summer Symbol

1965

Etching with relief printing

plate: 16 9/16 × 14 13/16" (42.1 × 37.6 cm); sheet (irreg.): 18 3/4 × 16 5/16"
(47.6 × 41.4 cm)

The Museum of Modern Art, New York. Gift of Julie and Bennett Roberts,
Roberts Projects, Los Angeles



BETYE SAAR (American, born 1926)

The Man from Phrenology

1965

Etching

plate: 14 13/16 × 9 13/16" (37.7 × 25 cm); sheet (irreg.): 17 11/16 × 12 5/8"
(44.9 × 32.1 cm)

The Museum of Modern Art, New York. The Candace King Weir Endowment for
Women Artists



BETYE SAAR (American, born 1926)

The Mystic Flag

1965

Etching with relief printing and relief-printed found objects

plate (irreg.): 3 3/8 × 5 7/8" (8.6 × 15 cm); sheet (irreg.): 5 5/8 × 8 9/16" (14.3 ×
21.7 cm)

The Museum of Modern Art, New York. Gift of Tracye and Francis Cavanaugh



BETYE SAAR (American, born 1926)

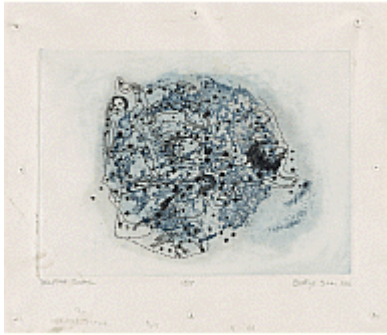
The Mystic Window #1

1965

Wooden window frame with cut-and-pasted printed paper and paper with ink,
pencil and felt-tip pen

22 × 32 1/2 × 1 5/16" (55.8 × 82.55 × 3.3 cm)

Collection halley k harrisburg and Michael Rosenfeld, New York



BETYE SAAR (American, born 1926)

Celestial Scene

1966

Etching

plate: 8 15/16 × 12 1/16" (22.7 × 30.6 cm); sheet: 13 1/16 × 15" (33.2 × 38.1 cm)

The Museum of Modern Art, New York. Committee on Drawings and Prints Fund



BETYE SAAR (American, born 1926)

House of Tarot

1966

Etching with relief printing and relief-printed and embossed found objects

plate: 17 11/16 × 23 3/4" (45 × 60.4 cm); sheet: 19 15/16 × 27 9/16" (50.6 × 70 cm)

The Museum of Modern Art, New York. Acquired through the generosity of The Friends of Education of The Museum of Modern Art in honor of Marquita Pool-Eckert



BETYE SAAR (American, born 1926)

Mystic Window for Leo

1966

Wooden window frame with cut-and-pasted paper and printed paper with ink, colored pencil and embossing

14 1/4 × 17 3/4" (36.2 × 45.1 cm)

Collection Meghan R. Cavanaugh, Los Angeles



BETYE SAAR (American, born 1926)

Palm of Love

1966

Etching with relief printing

plate: 17 15/16 × 23 3/4" (45.6 × 60.3 cm); sheet: 19 1/16 × 26 1/16" (48.4 × 66.2 cm)

The Museum of Modern Art, New York. Committee on Drawings and Prints Fund



BETYE SAAR (American, born 1926)

Phrenology Man Digs Sol y Luna

1966

Etching with relief-printed found objects

composition: 14 5/8 × 15" (37.1 × 38.1 cm); sheet (irreg.): 17 3/8 × 17 1/2" (44.1 × 44.5 cm)

The Museum of Modern Art, New York. Acquired through the generosity of The Friends of Education of The Museum of Modern Art in honor of Eric J. Barkley



BETYE SAAR (American, born 1926)

The Mystic Galaxy

1966

Etching with relief-printed found objects

plate: 17 1/2 × 8 1/4" (44.5 × 20.9 cm); sheet: 19 15/16 × 10 7/8" (50.7 × 27.7 cm)

The Museum of Modern Art, New York. Gift of Alison Saar and Thomas Leiser



BETYE SAAR (American, born 1926)

The Phrenologer's Window II

1966

Wooden window frame with cut-and-pasted printed paper, acrylic paint and found objects on board

18 1/2 × 29 3/4 × 1" (47 × 75.6 × 2.5 cm)

Private collection, Los Angeles, courtesy Roberts Projects, Los Angeles



BETYE SAAR (American, born 1926)

Winter Symbol

1966

Etching

composition: 16 3/8 × 14 13/16" (41.6 × 37.7 cm); sheet: 19 1/2 × 17 3/8" (49.6 × 44.1 cm)

The Museum of Modern Art, New York. Committee on Drawings and Prints Fund



BETYE SAAR (American, born 1926)

Omen

1967

Wooden box with cut-and-pasted printed paper, fabric, photograph, foil, glass shards, photocopy transparency, letterpress type, acrylic paint and found objects

12 13/16 × 9 1/4 × 3 1/8" (32.5 × 23.5 × 7.9 cm)

Collection Candace King Weir



BETYE SAAR (American, born 1926)

The Palmist Window

1967

Wooden window frame with cut-and-pasted printed paper and fabric with charcoal and acrylic paint

24 × 28 × 1 1/4" (61 × 71.1 × 3.2 cm)

Collection halley k harrisburg and Michael Rosenfeld, New York



BETYE SAAR (American, born 1926)

Sketchbook with a drawing of lion devouring sun

1968-1969

6 1/2 × 4" (16.5 × 10.2 cm)

Collection Betye Saar, courtesy Roberts Projects, Los Angeles



BETYE SAAR (American, born 1926)

Black Girl's Window

1969

Wooden window frame with paint, cut-and-pasted printed and painted papers, daguerreotype, lenticular print, and plastic figurine

35 3/4 × 18 × 1 1/2" (90.8 × 45.7 × 3.8 cm)

The Museum of Modern Art, New York. Gift of Candace King Weir through The Modern Women's Fund, and Committee on Painting and Sculpture Funds



BETYE SAAR (American, born 1926)

Fiesta of the Dead

1969

Wooden box with mirror, printed wood, acrylic paint, cut-and-pasted paper and found objects

9 3/4 × 14 1/2 × 1 3/4" (24.8 × 36.8 × 4.4 cm)

Collection Candace King Weir



BETYE SAAR (American, born 1926)

Leather bound brown sketchbook with drawings

1969

closed: 8 1/2 × 6" (21.6 × 15.2 cm)

Collection Betye Saar, courtesy Roberts Projects, Los Angeles



BETYE SAAR (American, born 1926)

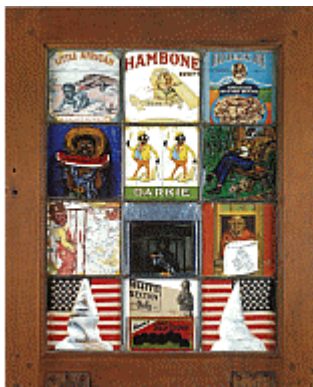
Untitled (Two White Skeletons)

1969

Mixed media on polaroid

7.25 × 3.25" (18.4 × 8.3 cm)

Collection Betye Saar, courtesy Roberts Projects, Los Angeles



BETYE SAAR (American, born 1926)

Black Crows in the White Section Only

1972

Wooden window frame with cut-and-pasted printed paper and fabric with gouache, stamped ink, and found objects

22 × 18 × 1 3/4" (55.9 × 45.7 × 4.4 cm)

Collection halley k harrisburg and Michael Rosenfeld, New York



BETYE SAAR (American, born 1926)

Let Me Entertain You

1972

Wooden window frame with cut-and-pasted printed and painted paper, photocopy transparency, and wood veneer with found object

14 3/4 x 24 x 1 3/4" (37.5 x 61 x 4.4 cm)

National Afro-American Museum and Cultural Center, Wilberforce, Ohio



BETYE SAAR (American, born 1926)

"Keep for Old Memiors"

1976

Pencil on paper, printed papers, and printed fabric sewn and pasted on fabric with lace, leaves, and feathers, mounted on painted frame with gloves

15 1/2 x 13" (39.4 x 33 cm)

The Museum of Modern Art, New York. Gift of Jo Carole and Ronald S. Lauder



SUZANNE BAUMAN

Spirit Catcher: The Art of Betye Saar

From the series *The Originals: Women in Art*

1977

1 videocassette, 30 min.

Courtesy WNET



BETYE SAAR (American, born 1926)

Copper objects used in soft-ground etching



BETYE SAAR (American, born 1926)
Gold paper butterfly used in soft-ground etching
4 × 2" (10.2 × 5.1 cm)
Collection Betye Saar, courtesy Roberts Projects, Los Angeles



BETYE SAAR (American, born 1926)
Gold paper fish used in soft-ground etching
3 × 1" (7.6 × 2.5 cm)
Collection Betye Saar, courtesy Roberts Projects, Los Angeles



BETYE SAAR (American, born 1926)
Plate for He Who...
Etched copper plate
5 1/4 × 3 1/2" (13.3 × 8.9 cm)
Collection Betye Saar, courtesy Roberts Projects, Los Angeles



BETYE SAAR (American, born 1926)
Plate for The Man from Phrenology and Phrenology Man Digs Sol Y Luna
Etched zinc plate
12 3/4 × 8" (32.4 × 20.3 cm)
Collection Betye Saar, courtesy Roberts Projects, Los Angeles



BETYE SAAR (American, born 1926)

Power's Bust: The Mental Faculties

Plaster

12 1/2 × 6 1/2 × 5 3/4" (31.75 × 16.51 × 14.61 cm)

Collection Betye Saar, courtesy Roberts Projects, Los Angeles



BETYE SAAR (American, born 1926)

Rubber stamps used in soft-ground etching

Collection Betye Saar, courtesy Roberts Projects, Los Angeles