

Fifth Floor, 1880s-1940s

505 Circa 1913



35.1972

Symphony Number 1

Vladimir Baranoff-Rossiné

1913

Polychrome wood, cardboard, and crushed eggshells

63 1/4 x 28 1/2 x 25" (161.1 x 72.2 x 63.4 cm)

Katia Granoff Fund



9.1978

Composition

Vanessa Bell

c. 1914

Gouache, watercolor, and colored paper on cut-and-pasted paper

21 3/4 x 17 1/4" (55.1 x 43.7 cm)

The Joan and Lester Avnet Collection



231.1948

Unique Forms of Continuity in Space

Umberto Boccioni

1913 (cast 1931 or 1934)

Bronze

43 7/8 x 34 7/8 x 15 3/4" (111.2 x 88.5 x 40 cm)

Acquired through the Lillie P. Bliss Bequest (by exchange)



580.1967

Dynamism of a Soccer Player

Umberto Boccioni

1913

Oil on canvas

6' 4 1/8" x 6' 7 1/8" (193.2 x 201 cm)

The Sidney and Harriet Janis Collection



146.1945

I and the Village

Marc Chagall

1911

Oil on canvas

6' 3 5/8" x 59 5/8" (192.1 x 151.4 cm)

Mrs. Simon Guggenheim Fund

Fifth Floor, 1880s-1940s

505 Circa 1913



1.1954

Simultaneous Contrasts: Sun and Moon

Robert Delaunay

Paris 1913 (dated on painting 1912)

Oil on canvas

53" (134.5 cm) in diameter

Mrs. Simon Guggenheim Fund



173.2018

La Prose du Transsibérien et de la Petite Jehanne de France (Prose of the Trans-Siberian and of Little Joan of France)

Sonia Delaunay-Terk

1913

Illustrated book with pochoir and hand-painted parchment wrapper page (unfolded): 77 1/2 x 14" (196.9 x 35.6 cm); overall (closed): 7 1/4 x 4 1/8 x 5/8" (18.4 x 10.5 x 1.6 cm)

Acquired through the generosity of Marlene Hess and James D. Zirin, Kathy and Richard S. Fuld, Jr., Marie-Josée and Henry R. Kravis, Jerry I. Speyer and Katherine Farley, Glenn and Amanda Fuhrman, Ralph Goldenberg and Anna Barbagallo, and the Committee on Drawings and Prints Fund, in honor of Donald B. Marron



456.1937

The Horse

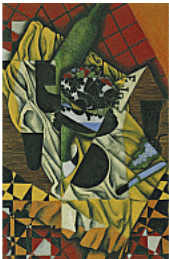
Raymond Duchamp-Villon

1914 (cast c. 1930-31)

Bronze

40 x 39 1/2 x 22 3/8" (101.6 x 100.1 x 56.7 cm)

Van Gogh Purchase Fund



132.1947

Grapes

Juan Gris

October 1913

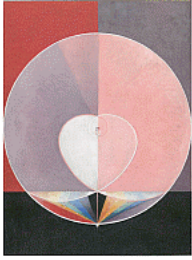
Oil on canvas

36 1/4 x 23 5/8" (92.1 x 60 cm)

Bequest of Anna Erickson Levene in memory of her husband, Dr. Phoebus Aaron Theodor Levene

Fifth Floor, 1880s-1940s

505 Circa 1913



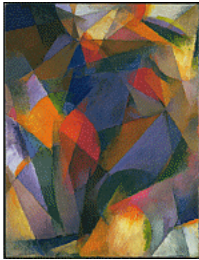
LN2019.433
The Dove, No 2, Series UW, Group IX
Hilma af Klint
1915
Oil on canvas
59 13/16 × 45 1/4" (152 × 115 cm)
Hilma af Klint Foundation



563.1956
Mme Kupka among Verticals
František Kupka
1910-11
Oil on canvas
53 3/8 × 33 5/8" (135.5 × 85.3 cm)
Hillman Periodicals Fund



11.1958
Exit the Ballets Russes
Fernand Léger
1914
Oil on canvas
53 3/4 × 39 1/2" (136.5 × 100.3 cm)
Gift of Mr. and Mrs. Peter A. Rübél (partly by exchange)



346.1949
Synchromy
Stanton Macdonald-Wright
1917
Oil on canvas
31 × 24" (78.8 × 61 cm)
Given anonymously



815.1935
Woman with Pails: Dynamic Arrangement
Kazimir Malevich
1912-13 (dated on reverse 1912)
Oil on canvas
31 5/8 × 31 5/8" (80.3 × 80.3 cm)
1935 Acquisition confirmed in 1999 by agreement with the Estate of Kazimir Malevich and made possible with funds from the Mrs. John Hay Whitney Bequest (by exchange)

Fifth Floor, 1880s-1940s

505 Circa 1913



65.1995

Lake George, Coat and Red

Georgia O'Keeffe

1919

Oil on canvas

27 3/8 x 23 1/4" (69.6 x 59 cm)

Gift of The Georgia O'Keeffe Foundation



292.1956

Glass of Absinthe

Pablo Picasso

Paris, spring 1914

Painted bronze with absinthe spoon

8 1/2 x 6 1/2 x 3 3/8" (21.6 x 16.4 x 8.5 cm), diameter at base 2 1/2" (6.4 cm)

Gift of Louise Reinhardt Smith



1059.1983

Objects from a Dyer's Shop

Lyubov Popova

1914

Oil on canvas

27 3/4 x 35" (71 x 89 cm)

The Riklis Collection of McCrory Corporation



2479.2001

Cubist Landscape

Diego Rivera

1912

Oil on canvas

25 3/4 x 35 1/2" (65.4 x 90.2 cm)

Gift of Elizabeth Meyer Lorentz

Fifth Floor, 1880s-1940s

506 Henri Matisse



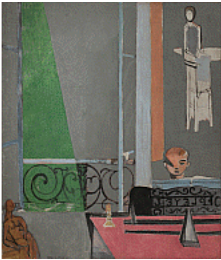
100.1958
Fishing Boats, Collioure
André Derain
1905
Oil on canvas
15 1/8 x 18 1/4" (38.2 x 46.3 cm)
The Philip L. Goodwin Collection



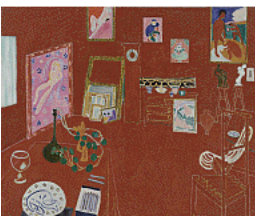
SPC66.1990
Bridge over the Riou
André Derain
1906
Oil on canvas
32 1/2 x 40" (82.6 x 101.6 cm)
The William S. Paley Collection



273.1939
The Blue Window
Henri Matisse
Issy-les-Moulineaux, summer 1913
Oil on canvas
51 1/2 x 35 5/8" (130.8 x 90.5 cm)
Abby Aldrich Rockefeller Fund



125.1946
The Piano Lesson
Henri Matisse
Issy-les-Moulineaux, late summer 1916
Oil on canvas
8' 1/2" x 6' 11 3/4" (245.1 x 212.7 cm)
Mrs. Simon Guggenheim Fund



8.1949
The Red Studio
Henri Matisse
Issy-les-Moulineaux, fall 1911
Oil on canvas
71 1/4" x 7' 2 1/4" (181 x 219.1 cm)
Mrs. Simon Guggenheim Fund

Fifth Floor, 1880s-1940s

506 Henri Matisse



7.1952

Jeannette (I)

Henri Matisse

Issy-les-Moulineaux, January - March (?) 1910

Bronze

13 x 9 x 10" (33 x 22.8 x 25.5 cm)

Acquired through the Lillie P. Bliss Bequest (by exchange)



8.1952

Jeannette (III)

Henri Matisse

Issy-les-Moulineaux, April - September 1910 or February - mid-July 1911

Bronze

23 3/4 x 10 1/4 x 11" (60.3 x 26 x 28 cm)

Acquired through the Lillie P. Bliss Bequest (by exchange)



9.1952

Jeannette (IV)

Henri Matisse

Issy-les-Moulineaux, April - September 1910 or February - mid-July 1911

Bronze

24 1/8 x 10 3/4 x 11 1/4" (61.3 x 27.4 x 28.7 cm)

Acquired through the Lillie P. Bliss Bequest (by exchange)



10.1952

Jeannette (V)

Henri Matisse

Issy-les-Moulineaux, summer 1916

Bronze

22 7/8 x 8 3/8 x 10 5/8" (58.1 x 21.3 x 27.1 cm)

Acquired through the Lillie P. Bliss Bequest (by exchange)



383.1955

Jeannette (II)

Henri Matisse

Issy-les-Moulineaux, January - March (?) 1910

Bronze

10 3/8 x 8 1/4 x 9 5/8" (26.2 x 21 x 24.5 cm)

Gift of Sidney Janis

Fifth Floor, 1880s-1940s

506 Henri Matisse



386.1955

The Moroccans

Henri Matisse

Issy-les-Moulineaux, late 1915 and fall 1916

Oil on canvas

71 3/8" x 9' 2" (181.3 x 279.4 cm)

Gift of Mr. and Mrs. Samuel A. Marx



554.1956

The Rose Marble Table

Henri Matisse

Issy-les-Moulineaux, spring-summer 1917

Oil on canvas

57 1/2 x 38 1/4" (146 x 97 cm)

Mrs. Simon Guggenheim Fund



201.1963

Dance (I)

Henri Matisse

Paris, Boulevard des Invalides, early 1909

Oil on canvas

8' 6 1/2" x 12' 9 1/2" (259.7 x 390.1 cm)

Gift of Nelson A. Rockefeller in honor of Alfred H. Barr, Jr.



709.1983

La Japonaise: Woman beside the Water

Henri Matisse

Collioure, summer 1905

Oil and pencil on canvas

13 7/8 x 11 1/8" (35.2 x 28.2 cm)

Purchase and anonymous gift



355.1997

Composition

Henri Matisse

Issy-les-Moulineaux, 1915

Oil on canvas

57 1/2 x 38 1/8" (146 x 97 cm)

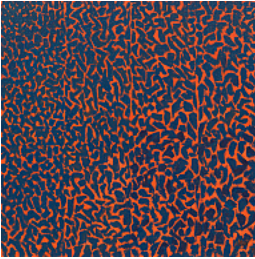
Gift of Jo Carole and Ronald S. Lauder; Nelson A. Rockefeller Bequest, gift of Mr. and Mrs. William H. Weintraub, and Mary Sisler Bequest (all by exchange)

Fifth Floor, 1880s-1940s

506 Henri Matisse



582.1998
Study for "Luxe, calme et volupté"
Henri Matisse
1904
Oil on canvas
12 7/8 x 16" (32.7 x 40.6 cm)
Mrs. John Hay Whitney Bequest



505.2015
Fiery Sunset
Alma Woodsey Thomas
1973
Acrylic on canvas
41 1/4 x 41 1/4" (104.8 x 104.8 cm)
Committee on Painting and Sculpture Funds

Fifth Floor, 1880s-1940s

507 Artists' Books and Prints in Russia

53.1977.1-12

Vertogradari Nad Lozami (Gardeners over the Vines)

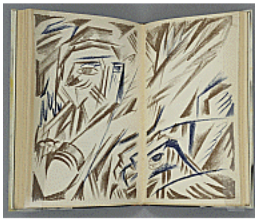
Natalia Goncharova

1913

Illustrated book with ten lithographs and two woodcuts

page (each): 6 11/16 × 4 1/2" (17 × 11.4 cm); overall (closed): 7 3/16 × 4 3/4 × 13/16" (18.2 × 12 × 2 cm)

A. Conger Goodyear Fund



53.1977.8

Double page plate (between pages 96 and 97) from Vertogradari Nad Lozami (Gardeners over the Vines)

Natalia Goncharova

1913

Lithograph from an illustrated book with ten lithographs and two woodcuts composition (irreg.): 6 5/8 × 8 9/16" (16.8 × 21.8 cm); page (each): 6 15/16 × 4 1/2" (17.7 × 11.4 cm)

A. Conger Goodyear Fund



31.2001.1

Cover from Igra v adu (A Game in Hell)

Natalia Goncharova

1912

Lithograph with lithographed manuscript text from an illustrated book with fourteen lithographs (eleven with lithographed manuscript text, including cover) and one lithographed manuscript text

composition (irreg.): 7 1/4 × 5 11/16" (18.4 × 14.4 cm); cover: 7 3/8 × 5 13/16" (18.7 × 14.7 cm)

Gift of The Judith Rothschild Foundation



31.2001.1-15

Igra v adu (A Game in Hell)

Natalia Goncharova

1912

Illustrated book with fourteen lithographs (eleven with lithographed manuscript text, including cover) and one lithographed manuscript text page (each approx.): 7 5/16 × 5 9/16" (18.5 × 14.1 cm); overall (closed): 7 3/8 × 5 13/16 × 1/16" (18.7 × 14.7 × 0.2 cm)

Gift of The Judith Rothschild Foundation

Fifth Floor, 1880s-1940s

507 Artists' Books and Prints in Russia



31.2001.6

Folio 5 from Igra v adu (A Game in Hell)

Natalia Goncharova

1912

Lithograph with lithographed manuscript text from an illustrated book with fourteen lithographs (eleven with lithographed manuscript text, including cover) and one lithographed manuscript text composition (irreg.): 7 × 5 3/8" (17.8 × 13.6 cm); page: 7 5/16 × 5 9/16" (18.5 × 14.2 cm)

Gift of The Judith Rothschild Foundation



31.2001.9

Folio 8 from Igra v adu (A Game in Hell)

Natalia Goncharova

1912

Lithograph with lithographed manuscript text from an illustrated book with fourteen lithographs (eleven with lithographed manuscript text, including cover) and one lithographed manuscript text composition (irreg.): 6 15/16 × 5 5/16" (17.7 × 13.5 cm); page: 7 5/16 × 5 9/16" (18.5 × 14.2 cm)

Gift of The Judith Rothschild Foundation



193.2001.1

Sv. Georgii (St. George) from Misticheskie obrazy voiny. 14 litografii (Mystical Images of War: Fourteen Lithographs)

Natalia Goncharova

1914

One from a portfolio of fourteen lithographs composition (irreg.): 12 1/2 × 9 7/16" (31.8 × 24 cm); sheet: 12 7/8 × 9 3/4" (32.7 × 24.8 cm)

Gift of The Judith Rothschild Foundation



193.2001.1-15

Misticheskie obrazy voiny. 14 litografii (Mystical Images of War: Fourteen Lithographs)

Natalia Goncharova

1914

Portfolio of fourteen lithographs with letterpress cover composition (see child records): dimensions vary; sheet (orientation varies, each approx.): 12 7/8 × 9 5/8" (32.7 × 24.5 cm) or 9 5/8 × 12 7/8" (24.5 × 32.7 cm)

Gift of The Judith Rothschild Foundation

Fifth Floor, 1880s-1940s

507 Artists' Books and Prints in Russia



193.2001.2

Belyi Orel (The White Eagle) from Misticheskie obrazy voiny. 14 litografii (Mystical Images of War: Fourteen Lithographs)

Natalia Goncharova

1914

One from a portfolio of fourteen lithographs

composition (irreg.): 12 1/2 x 9 7/16" (31.8 x 24 cm); sheet: 12 7/8 x 9 3/4" (32.7 x 24.8 cm)

Gift of The Judith Rothschild Foundation



193.2001.3

Britanskii Lev (The British Lion) from Misticheskie obrazy voiny. 14 litografii (Mystical Images of War: Fourteen Lithographs)

Natalia Goncharova

1914

One from a portfolio of fourteen lithographs

composition (irreg.): 9 5/8 x 12 5/16" (24.4 x 31.2 cm); sheet: 9 5/8 x 12 7/8" (24.5 x 32.7 cm)

Gift of The Judith Rothschild Foundation



193.2001.4

Frantzuzskii Petukh (The French Cock) from Misticheskie obrazy voiny. 14 litografii (Mystical Images of War: Fourteen Lithographs)

Natalia Goncharova

1914

One from a portfolio of fourteen lithographs

composition (irreg.): 12 1/16 x 9 1/16" (30.7 x 23 cm); sheet: 12 3/4 x 9 1/2" (32.4 x 24.1 cm)

Gift of The Judith Rothschild Foundation



193.2001.5

Deva Na Zvere (Maiden on the Beast) from Misticheskie obrazy voiny. 14 litografii (Mystical Images of War: Fourteen Lithographs)

Natalia Goncharova

1914

One from a portfolio of fourteen lithographs

composition (irreg.): 12 5/8 x 9 9/16" (32.1 x 24.3 cm); sheet: 12 3/4 x 9 5/8" (32.4 x 24.5 cm)

Gift of The Judith Rothschild Foundation



193.2001.6

Peresvet i Oslyabya (Peresvet and Oslyabya) from Misticheskie obrazy voiny. 14 litografii (Mystical Images of War: Fourteen Lithographs)

Natalia Goncharova

1914

One from a portfolio of fourteen lithographs

composition (irreg.): 11 15/16 x 9 1/16" (30.4 x 23 cm); sheet: 12 3/4 x 9 3/4" (32.4 x 24.7 cm)

Gift of The Judith Rothschild Foundation



193.2001.7

Arkhistratig Mikhail (Archangel Michael) from Misticheskie obrazy voiny. 14 litografii (Mystical Images of War: Fourteen Lithographs)

Natalia Goncharova

1914

One from a portfolio of fourteen lithographs

composition (irreg.): 12 11/16 x 9 3/4" (32.2 x 24.7 cm); sheet: 12 15/16 x 9 3/4" (32.8 x 24.8 cm)

Gift of The Judith Rothschild Foundation



193.2001.8

Videnie v oblakakh (Vision in the Clouds) from Misticheskie obrazy voiny. 14 litografii (Mystical Images of War: Fourteen Lithographs)

Natalia Goncharova

1914

One from a portfolio of fourteen lithographs

composition (irreg.): 12 1/8 x 9 3/8" (30.8 x 23.8 cm); sheet: 12 15/16 x 9 3/4" (32.9 x 24.8 cm)

Gift of The Judith Rothschild Foundation



193.2001.9

Khristolyubivoe voinstvo (Christian Host) from Misticheskie obrazy voiny. 14 litografii (Mystical Images of War: Fourteen Lithographs)

Natalia Goncharova

1914

One from a portfolio of fourteen lithographs

composition (irreg.): 12 1/4 x 9 1/16" (31.1 x 23 cm); sheet: 12 11/16 x 9 5/8" (32.3 x 24.5 cm)

Gift of The Judith Rothschild Foundation

Fifth Floor, 1880s-1940s

507 Artists' Books and Prints in Russia



193.2001.10

Angely i aeroplany (Angels and Airplanes) from Misticheskie obrazy voiny. 14 litografii (Mystical Images of War: Fourteen Lithographs)

Natalia Goncharova

1914

One from a portfolio of fourteen lithographs

composition: 12 1/16 x 8 15/16" (30.6 x 22.7 cm); sheet: 12 7/8 x 9 7/16" (32.7 x 24 cm)

Gift of The Judith Rothschild Foundation



193.2001.11

Grad obrechennyi (The Doomed City) from Misticheskie obrazy voiny. 14 litografii (Mystical Images of War: Fourteen Lithographs)

Natalia Goncharova

1914

One from a portfolio of fourteen lithographs

composition (irreg.): 12 3/16 x 9 3/16" (30.9 x 23.3 cm); sheet: 12 3/4 x 9 5/8" (32.4 x 24.5 cm)

Gift of The Judith Rothschild Foundation



193.2001.12

Kon' Bled' (The Pale Horse) from Misticheskie obrazy voiny. 14 litografii (Mystical Images of War: Fourteen Lithographs)

Natalia Goncharova

1914

One from a portfolio of fourteen lithographs

composition: 12 11/16 x 9 11/16" (32.3 x 24.6 cm); sheet: 12 3/4 x 9 11/16" (32.4 x 24.6 cm)

Gift of The Judith Rothschild Foundation



193.2001.13

Bratskaya Mogila (A Common Grave) from Misticheskie obrazy voiny. 14 litografii (Mystical Images of War: Fourteen Lithographs)

Natalia Goncharova

1914

One from a portfolio of fourteen lithographs

composition (irreg.): 9 5/8 x 12 11/16" (24.5 x 32.3 cm); sheet: 9 13/16 x 12 13/16" (24.9 x 32.5 cm)

Gift of The Judith Rothschild Foundation

Fifth Floor, 1880s-1940s

507 Artists' Books and Prints in Russia



193.2001.14

Aleksandr Nevskii (Alexander Nevski) from Misticheskie obrazy voiny. 14 litografii (Mystical Images of War: Fourteen Lithographs)

Natalia Goncharova

1914

One from a portfolio of fourteen lithographs

composition (irreg.): 11 13/16 × 8 7/8" (30 × 22.5 cm); sheet: 12 11/16 × 9 5/8" (32.2 × 24.4 cm)

Gift of The Judith Rothschild Foundation



193.2001.15

Portfolio Cover from Misticheskie obrazy voiny. 14 litografii (Mystical Images of War: Fourteen Lithographs)

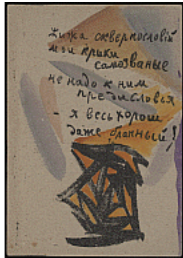
Natalia Goncharova

1914

Line block cover from a portfolio of fourteen lithographs

composition (irreg.): 5 3/8 × 4 1/8" (13.6 × 10.4 cm); overall (closed): 14 1/16 × 10 7/16" (35.7 × 26.5 cm)

Gift of The Judith Rothschild Foundation



17.2001.2

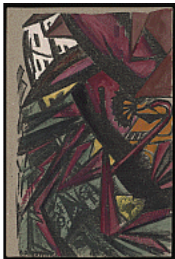
Folio 2 from Utinoe gnezdyshko... durnykh slov (A Little Duck's Nest... of Bad Words)

Olga Rozanova

1913

Lithograph with gouache and watercolor additions and lithographed manuscript text from an illustrated book with twenty-three lithographs with gouache and watercolor additions and lithographed manuscript text
composition (irreg.): 7 1/16 × 4 1/2" (17.9 × 11.4 cm); page: 6 7/8 × 4 13/16" (17.5 × 12.2 cm)

Gift of The Judith Rothschild Foundation



17.2001.4

Plate (folio 4) from Utinoe gnezdyshko... durnykh slov (A Little Duck's Nest... of Bad Words)

Olga Rozanova

1913

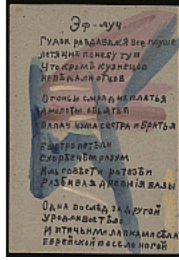
Lithograph with gouache and watercolor additions from an illustrated book with twenty-three lithographs with gouache and watercolor additions and lithographed manuscript text

composition (irreg.): 6 11/16 × 4 5/16" (17 × 11 cm); page: 6 7/8 × 4 5/8" (17.4 × 11.7 cm)

Gift of The Judith Rothschild Foundation

Fifth Floor, 1880s-1940s

507 Artists' Books and Prints in Russia



17.2001.5

Folio 5 from Utinoe gnezdyshko... durnykh slov (A Little Duck's Nest... of Bad Words)

Olga Rozanova

1913

Lithographed manuscript text with gouache and watercolor additions from an illustrated book with twenty-three lithographs with gouache and watercolor additions and lithographed manuscript text composition (irreg.): 6 13/16 × 4 3/16" (17.3 × 10.7 cm); page: 6 7/8 × 4 3/4" (17.4 × 12 cm)

Gift of The Judith Rothschild Foundation



17.2001.17

Plate (folio 17) from Utinoe gnezdyshko... durnykh slov (A Little Duck's Nest... of Bad Words)

Olga Rozanova

1913

Lithograph with gouache and watercolor additions from an illustrated book with twenty-three lithographs with gouache and watercolor additions and lithographed manuscript text composition (irreg.) and page: 6 7/8 × 4 13/16" (17.4 × 12.2 cm)

Gift of The Judith Rothschild Foundation



17.2001.23

Cover from Utinoe gnezdyshko... durnykh slov (A Little Duck's Nest... of Bad Words)

Olga Rozanova

1913

Cover from an illustrated book with twenty-three lithographs with gouache and watercolor additions and lithographed manuscript text (including cover)

page: 7 3/8 × 4 13/16" (18.8 × 12.2 cm)

Gift of The Judith Rothschild Foundation



65.2001.1-21

Zaumnaya gniga (Transrational Boog)

Olga Rozanova

1915

Illustrated book with nine linoleum cuts and two collages (including cover) and rubber-stamped text

page (each approx.): 8 7/16 × 7 1/16" (21.5 × 18 cm); overall (closed): 8 11/16 × 7 7/8 × 3/16" (22 × 20 × 0.4 cm)

Gift of The Judith Rothschild Foundation

Fifth Floor, 1880s-1940s

507 Artists' Books and Prints in Russia



65.2001.18

Plate (folio 18) from Zaumnaia gniga (Transrational Boog)

Olga Rozanova

1915

Linoleum cut from an illustrated book with nine linoleum cuts and two collages (including cover) with rubber-stamped text
composition: 6 15/16 × 5 5/16" (17.6 × 13.5 cm); page: 8 9/16 × 6 3/4" (21.7 × 17.2 cm)

Gift of The Judith Rothschild Foundation



66.2001.1-21

Zaumnaia gniga (Transrational Boog)

Olga Rozanova

1915

Illustrated book with nine linoleum cuts, ten rubber-stamped texts, and two collages (including cover)
page (each approx.): 8 9/16 × 7" (21.7 × 17.8 cm); overall (closed): 8 7/8 × 7 7/8 × 1 9/16" (22.6 × 20 × 4 cm)

Gift of The Judith Rothschild Foundation



66.2001.21

Cover from Zaumnaia gniga (Transrational Boog)

Olga Rozanova

1915

Collage from an illustrated book with nine linoleum cuts, ten rubber-stamped texts, and two collages (including cover)
page (each): 8 11/16 × 7 3/8" (22 × 18.8 cm)

Gift of The Judith Rothschild Foundation



368.2001.1

Frontispiece from Voina (War)

Olga Rozanova

1915, published 1916

Linoleum cut from an illustrated book with sixteen linoleum cuts (including cover, two with collage additions)
composition (irreg.): 13 7/8 × 6 1/2" (35.3 × 16.5 cm); sheet: 15 3/4 × 12 3/8" (40 × 31.5 cm)

Gift of The Judith Rothschild Foundation



368.2001.1-16

Voina (War)

Olga Rozanova

1915, published 1916

Illustrated book with sixteen linoleum cuts (including cover, two with collage additions)

composition and sheet (see child records): dimensions vary

Gift of The Judith Rothschild Foundation

Fifth Floor, 1880s-1940s

507 Artists' Books and Prints in Russia



368.2001.2

Razrushenie goroda (Destruction of the City) from Voina (War)

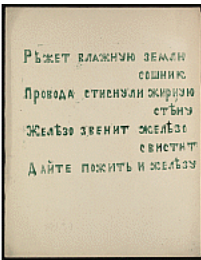
Olga Rozanova

1915, published 1916

Linoleum cut from an illustrated book with sixteen linoleum cuts (including cover, two with collage additions)

composition: 14 5/16 × 10 9/16" (36.3 × 26.8 cm); sheet: 15 7/8 × 12 3/8" (40.3 × 31.4 cm)

Gift of The Judith Rothschild Foundation



368.2001.3

Poem from Voina (War)

Olga Rozanova

1915, published 1916

Linoleum cut from an illustrated book with sixteen linoleum cuts (including cover, two with collage additions)

composition (irreg.): 7 13/16 × 10 5/8" (19.8 × 27 cm); sheet: 15 3/8 × 12 5/16" (39 × 31.2 cm)

Gift of The Judith Rothschild Foundation



368.2001.4

Aeroplany nad gorodom (Airplanes over the City) from Voina (War)

Olga Rozanova

1915, published 1916

Linoleum cut with collage additions from an illustrated book with sixteen linoleum cuts (including cover, two with collage additions)

composition (irreg.): 14 15/16 × 11 13/16" (38 × 30 cm); sheet: 15 9/16 × 12 3/8" (39.6 × 31.4 cm)

Gift of The Judith Rothschild Foundation



368.2001.5

Bitva (Battle) from Voina (War)

Olga Rozanova

1915, published 1916

Linoleum cut from an illustrated book with sixteen linoleum cuts (including cover, two with collage additions)

composition: 10 1/2 × 14 7/16" (26.6 × 36.6 cm); sheet: 12 1/2 × 15 11/16" (31.7 × 39.9 cm)

Gift of The Judith Rothschild Foundation

Fifth Floor, 1880s-1940s

507 Artists' Books and Prints in Russia



368.2001.6

Na smert' (To the Death) from Voina (War)

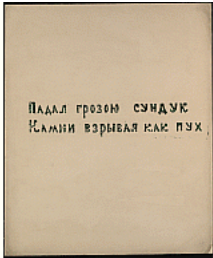
Olga Rozanova

1915, published 1916

Linoleum cut from an illustrated book with sixteen linoleum cuts (including cover, two with collage additions)

composition: 14 5/16 × 8 3/4" (36.3 × 22.2 cm); sheet: 16 1/4 × 11 7/8" (41.3 × 30.1 cm)

Gift of The Judith Rothschild Foundation



368.2001.7

Poem from Voina (War)

Olga Rozanova

1915, published 1916

Linoleum cut from an illustrated book with sixteen linoleum cuts (including cover, two with collage additions)

composition (irreg.): 2 × 10 3/8" (5.1 × 26.3 cm); sheet: 14 15/16 × 12 5/8" (38 × 32 cm)

Gift of The Judith Rothschild Foundation



368.2001.8

Otryvok iz gazetnago soobshcheniia (Excerpt from a Newspaper Bulletin) from Voina (War)

Olga Rozanova

1915, published 1916

Linoleum cut from an illustrated book with sixteen linoleum cuts (including cover, two with collage additions)

composition: 14 9/16 × 10 1/16" (37 × 25.5 cm); sheet: 15 5/8 × 12 1/2" (39.7 × 31.8 cm)

Gift of The Judith Rothschild Foundation



368.2001.9

Otryvok iz gazetnago soobshcheniia (Excerpt from a Newspaper Bulletin) from Voina (War)

Olga Rozanova

1915, published 1916

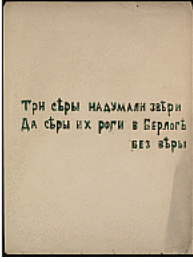
Linoleum cut from an illustrated book with sixteen linoleum cuts (including cover, two with collage additions)

composition: 14 11/16 × 10 1/2" (37.3 × 26.7 cm); sheet: 15 3/8 × 12 3/8" (39 × 31.4 cm)

Gift of The Judith Rothschild Foundation

Fifth Floor, 1880s-1940s

507 Artists' Books and Prints in Russia



368.2001.10

Poem from Voina (War)

Olga Rozanova

1915, published 1916

Linoleum cut from an illustrated book with sixteen linoleum cuts (including cover, two with collage additions)

composition (irreg.): 3 5/16 × 10 9/16" (8.4 × 26.9 cm); sheet: 16 1/16 × 12 3/16" (40.8 × 30.9 cm)

Gift of The Judith Rothschild Foundation



368.2001.11

Bitva v gorod (Combat in the City) from Voina (War)

Olga Rozanova

1915, published 1916

Linoleum cut from an illustrated book with sixteen linoleum cuts (including cover, two with collage additions)

composition: 10 13/16 × 8 1/2" (27.4 × 21.6 cm); sheet: 15 9/16 × 12 5/16" (39.5 × 31.3 cm)

Gift of The Judith Rothschild Foundation



368.2001.12

Poedinok (Duel) from Voina (War)

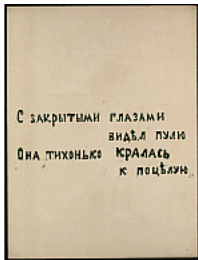
Olga Rozanova

1915, published 1916

Linoleum cut from an illustrated book with sixteen linoleum cuts (including cover, two with collage additions)

composition: 14 1/2 × 11" (36.8 × 28 cm); sheet: 16 1/4 × 12" (41.3 × 30.5 cm)

Gift of The Judith Rothschild Foundation



368.2001.13

Poem from Voina (War)

Olga Rozanova

1915, published 1916

Linoleum cut from an illustrated book with sixteen linoleum cuts (including cover, two with collage additions)

composition (irreg.): 3 15/16 × 10 5/8" (10 × 27 cm); sheet: 15 11/16 × 11 15/16" (39.9 × 30.3 cm)

Gift of The Judith Rothschild Foundation

Fifth Floor, 1880s-1940s

507 Artists' Books and Prints in Russia



368.2001.14

Bitva v trekh sferakh (na sush, na mor i v vozdukh) (Battle in Three Spheres [Land, Sea, and Air]) from Voina (War)

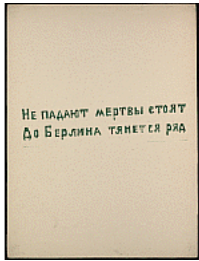
Olga Rozanova

1915, published 1916

Linoleum cut from an illustrated book with sixteen linoleum cuts (including cover, two with collage additions)

composition: 14 5/16 × 10 7/8" (36.4 × 27.6 cm); sheet: 15 3/4 × 12 5/8" (40 × 32 cm)

Gift of The Judith Rothschild Foundation



368.2001.15

Poem from Voina (War)

Olga Rozanova

1915, published 1916

Linoleum cut from an illustrated book with sixteen linoleum cuts (including cover, two with collage additions)

composition (irreg.): 1 7/8 × 10 7/16" (4.8 × 26.5 cm); sheet: 16 1/8 × 12 3/16" (41 × 31 cm)

Gift of The Judith Rothschild Foundation



368.2001.16

Cover from Voina (War)

Olga Rozanova

1915, published 1916

Linoleum cut with collage additions from an illustrated book with sixteen linoleum cuts (including cover, two with collage additions)

composition (irreg.): 13 7/8 × 11 7/16" (35.2 × 29 cm); sheet (irreg.): 15 7/8 × 12 3/8" (40.4 × 31.5 cm)

Gift of The Judith Rothschild Foundation



33.2001.1-40

Mirskontsa (Worldbackwards)

Various Artists

1912

Illustrated book with twenty-seven lithographs, lithographed manuscript text, rubber-stamped text, and collaged cover

page (irreg.): 7 1/4 × 5 1/2" (18.4 × 14 cm)

Gift of The Judith Rothschild Foundation

Fifth Floor, 1880s-1940s

507 Artists' Books and Prints in Russia



34.2001.1-39

Mirskontsa (Worldbackwards)

Various Artists

1912

Illustrated book with twenty-seven lithographs, lithographed manuscript text, rubber-stamped text, and collaged cover
page (irreg.): 7 1/16 x 5 1/2" (18 x 14 cm)

Gift of The Judith Rothschild Foundation



36.2001.1-38

Mirskontsa (Worldbackwards)

Various Artists

1912

Illustrated book with twenty-seven lithographs, lithographed manuscript text, rubber-stamped text, and collaged cover
page (irreg.): 7 1/2 x 5 3/16" (19 x 13.2 cm)

Gift of The Judith Rothschild Foundation

Fifth Floor, 1880s-1940s

508 Readymade in Paris and New York



143.1953

Da-Da (New York Dada Group)

Richard Boix

1921

Ink on paper

11 1/4 x 14 1/2" (28.6 x 36.8 cm)

Katherine S. Dreier Bequest



147.1953

"Ex Act"

John Covert

1919

Oil on plywood and board

25 x 27" (63.5 x 68.5 cm) including frame

Katherine S. Dreier Bequest



279.1949

Abstract Portrait of Marcel Duchamp

Katherine S. Dreier

1918

Oil on canvas

18 x 32" (45.7 x 81.3 cm)

Abby Aldrich Rockefeller Fund



W816.19

Anemic Cinema

Marcel Duchamp

1926

35mm film transferred to video (black and white, silent)

6 min.

The Museum of Modern Art, New York



3.1939

Monte Carlo Bond (No. 12)

Marcel Duchamp

1924

Cut-and-pasted gelatin silver prints on lithograph with letterpress

12 1/4 x 7 1/2" (31.2 x 19.3 cm)

Gift of the artist

Fifth Floor, 1880s-1940s

508 Readymade in Paris and New York



148.1953

Landscape

Marcel Duchamp

Neuilly, January-February 1911

Oil on canvas

18 1/8 x 24" (46.3 x 61.3 cm)

Katherine S. Dreier Bequest



149.1953.a-i

3 Standard Stoppages

Marcel Duchamp

Paris 1913-14

Wood box 11 1/8 x 50 7/8 x 9" (28.2 x 129.2 x 22.7 cm), with three threads 39 3/8" (100 cm), glued to three painted canvas strips 5 1/4 x 47 1/4" (13.3 x 120 cm), each mounted on a glass panel 7 1/4 x 49 3/8 x 1/4" (18.4 x 125.4 x 0.6 cm), three wood slats 2 1/2 x 43 x 1/8" (6.2 x 109.2 x 0.2 cm), shaped along one edge to match the curves of the threads

Katherine S. Dreier Bequest



150.1953

To Be Looked at (from the Other Side of the Glass) with One Eye, Close to, for Almost an Hour

Marcel Duchamp

Buenos Aires 1918

Oil, silver leaf, lead wire, and magnifying lens on glass (cracked), mounted between panes of glass in a standing metal frame, 20 1/8 x 16 1/4 x 1 1/2" (51 x 41.2 x 3.7 cm), on painted wood base, 1 7/8 x 17 7/8 x 4 1/2" (4.8 x 45.3 x 11.4 cm)

Overall 22" (55.8 cm) high

Katherine S. Dreier Bequest



215.1953.a-d

Designs for Chessmen

Marcel Duchamp

c. 1920

Ink, pencil, and relief printing on paper

8 5/8 x 9" (21.9 x 22.9 cm) each

Katherine S. Dreier Bequest

Fifth Floor, 1880s-1940s

508 Readymade in Paris and New York



595.1967.a-b

Bicycle Wheel

Marcel Duchamp

New York, 1951 (third version, after lost original of 1913)

Metal wheel mounted on painted wood stool

51 x 25 x 16 1/2" (129.5 x 63.5 x 41.9 cm)

The Sidney and Harriet Janis Collection



690.2006

In Advance of the Broken Arm

Marcel Duchamp

August 1964 (fourth version, after lost original of November 1915)

Wood and galvanized-iron snow shovel

52" (132 cm) high

Gift of The Jerry and Emily Spiegel Family Foundation



123.2019

Solitude-Funnel

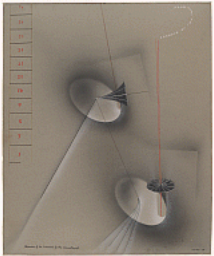
Suzanne Duchamp

1921

Oil, enamel, cut-and-pasted papers, ink, and pencil on canvas

40 3/8 x 33 1/16" (102.5 x 84 cm)

Gift of Joan H. Tisch (by exchange)



231.1937

Admiration of the Orchestrelle for the Cinematograph

Man Ray

1919

Airbrushed gouache, colored ink, and pencil on paperboard

25 7/8 x 21 1/2" (66 x 54.6 cm)

Gift of A. Conger Goodyear



116.1941

Rayograph

Man Ray

1923

Gelatin silver print (photogram)

11 9/16 x 9 1/4" (29.4 x 23.5 cm)

Gift of James Thrall Soby

Fifth Floor, 1880s-1940s

508 Readymade in Paris and New York



33.1954

The Rope Dancer Accompanies Herself with Her Shadows

Man Ray

1916

Oil on canvas

52" x 6' 1 3/8" (132.1 x 186.4 cm)

Gift of G. David Thompson



475.1984

Rayograph

Man Ray

1923

Gelatin silver print (photogram)

11 5/8 x 9 5/16" (29.6 x 23.7 cm)

Gift of Mr. and Mrs. Alfred H. Barr, Jr.



44.1992

Rayograph

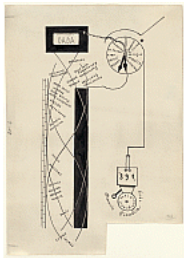
Man Ray

1923

Gelatin silver print

11 9/16 x 9 1/8" (29.4 x 23.2 cm)

Gift of James Thrall Soby



285.1937

Dada Movement (Mouvement Dada)

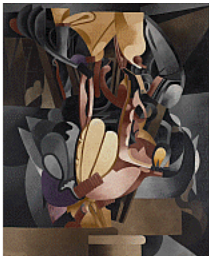
Francis Picabia

1919

Ink and pencil on paper

20 1/8 x 14 1/4" (51.1 x 36.2 cm)

Purchase



4.1954

I See Again in Memory My Dear Udnie

Francis Picabia

Paris, June - July 1914

Oil on canvas

8' 2 1/2" x 6' 6 1/4" (250.2 x 198.8 cm)

Hillman Periodicals Fund

Fifth Floor, 1880s-1940s

508 Ready-made in Paris and New York



1309.1968

"M'Amenez-y"

Francis Picabia

Paris, November 1919 - January 1920

Oil and enamel paint on cardboard

50 3/4 x 35 3/8" (129.2 x 89.8 cm)

Helena Rubinstein Fund



625.2014

Tableau Rastadada

Francis Picabia

1920

Cut-and-pasted printed paper on paper with ink

7 1/2 x 6 3/4" (19 x 17.1 cm)

Gift of Abby Aldrich Rockefeller (by exchange)



189.1953

Silence

Georges Ribemont-Dessaignes

c. 1915

Oil on canvas

36 1/4 x 28 7/8" (92.1 x 73.3 cm)

Katherine S. Dreier Bequest



715.2018

Poster for The Blind Man's Ball, Webster Hall, New York City

Beatrice Wood

1917

Letterpress

27 1/2 x 9 11/16" (69.9 x 24.6 cm)

The Merrill C. Berman Collection

Fifth Floor, 1880s-1940s

509 Florine Stettheimer and Company



1192.2008

Color Wheel (for Parkett no. 81)

Cosima von Bonin

2007

Multiple of enameled stainless steel and polypropylene

overall: 18 7/8 x 2 9/16" (48 x 6.5 cm)

General Print Fund



774.2012

Self-Portrait

Arch Connelly

1981

Acrylic and faux pearls on canvas

20" oval (50.8 cm)

Gift of Michael Connelly and daughters



300.1980

Tristan Tzara with Monocle

Sonia Delaunay-Terk

1923

Watercolor and pencil on paper

15 3/4 x 11 1/2" (40.1 x 29.3 cm)

Purchase



305.1980

Zaoum. Costume design for the play Le Coeur à Gaz

Sonia Delaunay-Terk

1923

Watercolor, ink, and pencil on paper

11 7/8 x 9 3/4" (30.2 x 24.7 cm)

Gift of Mr. and Mrs. Lewis Cullman



151.1953

Fresh Widow

Marcel Duchamp

New York 1920

Miniature French window, painted wood frame, and panes of glass covered with black leather

30 1/2 x 17 5/8" (77.5 x 44.8 cm), on wood sill 3/4 x 21 x 4" (1.9 x 53.4 x 10.2 cm)

Katherine S. Dreier Bequest

Fifth Floor, 1880s-1940s

509 Florine Stettheimer and Company



51.1977

Couple of Laundress' Aprons

Marcel Duchamp

1959

Two multiples of cloth and fur

overall (male, irreg.): 9 x 6 15/16 x 1 1/4" (22.8 x 17.7 x 3.2 cm); overall (female, irreg.): 9 3/4 x 7 13/16 x 7/8" (24.8 x 19.8 x 2.3 cm)

Gift of Arthur A. Goldberg



929.2005.a-b

Vital Perfection

Sylvie Fleury

1993

Multiple of faux fur-lined cardboard shoebox

overall: 3 3/4 x 10 15/16 x 6 5/8" (9.5 x 27.8 x 16.8 cm)

Mary Ellen Oldenburg Fund



336.1955

Dada Portrait of Berenice Abbott

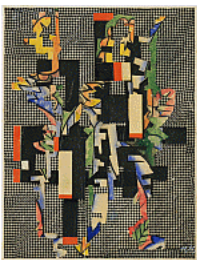
Baroness Elsa von Freytag-Loringhoven

c. 1923-26

Gouache, metallic paint, and tinted lacquer with varnish, metal foil, celluloid, fiberglass, glass beads, metal objects, cut-and-pasted painted paper, gesso, and cloth on paperboard

8 5/8 x 9 1/4" (21.9 x 23.5 cm)

From the collection of Mary Louise Reynolds



3.1963

Collage II (On Filet Ground) (Collage II [Auf Filetgrund])

Hannah Höch

c. 1925

Cut-and-pasted printed and painted paper on printed paper

9 3/4 x 7 5/8" (24.5 x 19.2 cm)

Gift of the artist and of Rose Fried



2634.1967

Watched

Hannah Höch

1925

Cut-and-pasted printed paper on printed paper

10 1/8 x 6 3/4" (25.7 x 17.1 cm)

Joseph G. Mayer Foundation Fund in honor of René d'Harnoncourt

Fifth Floor, 1880s-1940s

509 Florine Stettheimer and Company



1045.2010

Bitches Brew

Jutta Koether

2010

Acrylic on canvas, applied materials, and transparent epoxy

36 x 44" (91.4 x 111.8 cm)

The Pat Hearn and Colin de Land Acquisition Fund



601.2016.1-5

Fixed Intervals/6-10 Set (1-B)

Louise Lawler

1988-92

Set of five brass objects

dimensions vary

The Abby Aldrich Rockefeller Endowment for Prints



284.2009

Chorus Line

Frances Stark

2008

Cut-and-pasted printed and colored papers on paper

71 1/4 x 60" (181 x 152.4 cm)

Purchased with funds provided by the Contemporary Arts Council of The Museum of Modern Art, and Committee on Drawings Funds



83.1947.6

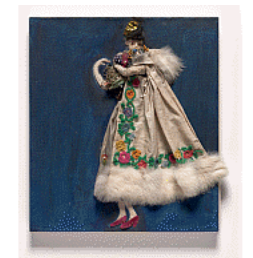
Costume design (Procession: Zizim of Persia, Agnes of Bourgneuf, the Unicorn, and Pierre d'Aubusson) for artist's ballet Orphée of the Quat-z-arts
Florine Stettheimer

c. 1912

Oil, fabric, and beads on canvas

17 1/8 x 35 1/8" (43.5 x 89.2 cm)

Gift of Miss Ettie Stettheimer



83.1947.8

Costume design (Georgette) for artist's ballet Orphée of the Quat-z-arts
Florine Stettheimer

c. 1912

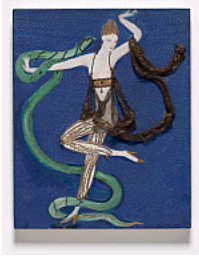
Oil, cloth, fur, yarn, and hair on canvas

17 1/4 x 15 1/8" (43.8 x 38.4 cm)

Gift of Miss Ettie Stettheimer

Fifth Floor, 1880s-1940s

509 Florine Stettheimer and Company



83.1947.9

Costume design (Euridice and the Snake) for the artist's ballet Orphée of the Quat-z-arts

Florine Stettheimer

c. 1912

Oil, beads, and metal lace on canvas

18 5/8 x 15 1/8" (47.3 x 38.4 cm)

Gift of Miss Ettie Stettheimer



8.1956

Family Portrait, II

Florine Stettheimer

1933

Oil on canvas

46 1/4 x 64 5/8" (117.4 x 164 cm)

Gift of Miss Ettie Stettheimer



534.1971

Portrait of My Mother

Florine Stettheimer

1925

Oil on canvas

38 3/8 x 26 5/8" (97.3 x 67.3 cm)

Barbara S. Adler Bequest



711.1971.a-d

Four Panel Screen

Florine Stettheimer

n.d.

Gilded and painted plaster on wood, four panels

Each panel 87 5/8 x 35 7/8" (222.6 x 91.2 cm)

Barbara S. Adler Bequest



253.2003

Head

Sophie Taeuber-Arp

1920

Painted wood with glass beads on wire

9 1/4" high (23.5 cm)

Mrs. John Hay Whitney Bequest (by exchange) and Committee on Painting and Sculpture Funds

Fifth Floor, 1880s-1940s

509 Florine Stettheimer and Company



308.2006

Doorknob

Rachel Whiteread

2001

Multiple of Technogel

object (irreg.): 2 1/4 x 2 3/16 x 5 1/8" (5.7 x 5.5 x 13 cm)

Acquired through the generosity of Coco Kim and Richard Schetman

Fifth Floor, 1880s-1940s

510 Machines, Mannequins, and Monsters



200582

Nosferatu, eine Symphonie des Gravens (Nosferatu, a Symphony of Horror)

1922

Photograph

8 1/2 × 10 3/4" (21.6 × 27.3 cm)



200592

King Kong

1933

Photograph

7 1/8 × 9 3/8" (18.1 × 23.8 cm)



200626

The Last Moment

1923

Photograph

8 1/16 × 9 3/4" (20.5 × 24.8 cm)



200628

Frankenstein

1931

Photograph

10 × 8" (25.4 × 20.3 cm)



200631

Hunchback of Notre Dame

1923

Photograph

8 × 10" (20.3 × 25.4 cm)

Fifth Floor, 1880s-1940s

510 Machines, Mannequins, and Monsters



200634
Cytherea
1924
Photograph
8 × 10" (20.3 × 25.4 cm)



200758
Puppets
1926
Photograph
8 × 10" (20.3 × 25.4 cm)



200293.1
Metropolis
1927
Photograph
8 1/8 × 10" (20.6 × 25.4 cm)



200581.1
Der Golem
1920
Photograph
7 13/16 × 10 1/4" (19.8 × 26 cm)



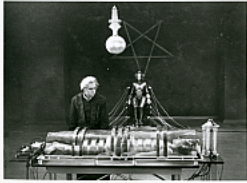
200591.1
Devil-Doll
1936
Photograph
8 × 10" (20.3 × 25.4 cm)

Fifth Floor, 1880s-1940s

510 Machines, Mannequins, and Monsters



200633.1
The Dream Doll
1917
Photograph
8 × 10" (20.3 × 25.4 cm)



200293.2
Metropolis
1927
Photograph
8 × 10" (20.3 × 25.4 cm)



200581.2
Der Golem
1920
Photograph
9 1/2 × 11 3/4" (24.1 × 29.8 cm)



200587.2
Bride of Frankenstein
1935
Photograph
10 × 8" (25.4 × 20.3 cm)



200591.2
Devil-Doll
1936
Photograph
8 × 10" (20.3 × 25.4 cm)

Fifth Floor, 1880s-1940s

510 Machines, Mannequins, and Monsters



200594.2

Chelovek S Kinoapparatom (Man with the Movie Camera)

1929

Photograph

8 5/8 × 11 1/4" (21.9 × 28.6 cm)



200630.2

The Great Gabbo

1929

Photograph

7 7/8 × 10 1/8" (20 × 25.7 cm)



200633.2

The Dream Doll

1917

Photograph

8 × 10" (20.3 × 25.4 cm)



200293.3

Metropolis

1927

Photograph

7 1/2 × 9 3/4" (19.1 × 24.8 cm)



200594.3

Chelovek S Kinoapparatom (Man with the Movie Camera)

1929

Photograph

8 7/8 × 11 7/16" (22.5 × 29.1 cm)

Fifth Floor, 1880s-1940s

510 Machines, Mannequins, and Monsters



200633.3
The Dream Doll
1917
Photograph
8 × 10" (20.3 × 25.4 cm)



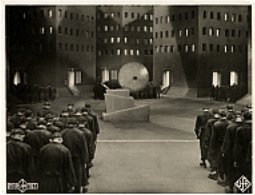
200293.4
Metropolis
1927
Photograph
7 5/8 × 9 1/2" (19.3 × 24.1 cm)



200594.4
Chelovek s Kinoapparatom (Man with the Movie Camera)
1929
Photograph
8 3/4 × 11 1/4" (22.2 × 28.6 cm)



200633.4
The Dream Doll
1917
Photograph
8 × 10" (20.3 × 25.4 cm)



200293.5
Metropolis
1927
Photograph
9 3/16 × 11 5/8" (23.3 × 29.5 cm)

Fifth Floor, 1880s-1940s

510 Machines, Mannequins, and Monsters



200594.5

Chelovek S Kinoapparatom (Man with the Movie Camera)

1929

Photograph

8 7/8 × 11 7/8" (22.5 × 30.2 cm)



200293.6

Metropolis

1927

Photograph

9 1/8 × 11 1/2" (23.2 × 29.2 cm)



200594.6

Chelovek S Kinoapparatom (Man with the Movie Camera)

1929

Photograph

8 13/16 × 11 5/16" (22.4 × 28.8 cm)



200293.7

Metropolis

1927

Photograph

9 1/8 × 11 11/16" (23.2 × 29.7 cm)



200293.8

Metropolis

1927

Photograph

9 3/16 × 11 9/16" (23.3 × 29.4 cm)

Fifth Floor, 1880s-1940s

510 Machines, Mannequins, and Monsters



200293.9
Metropolis
1927
Photograph
9 3/16 × 11 11/16" (23.3 × 29.7 cm)



2220.2001
Dr. F.G. Benedict's Latest Apparatus for Measuring Metabolism
Unknown photographer
1935
Gelatin silver print
7 1/2 × 9 7/16" (19 × 24 cm)
The New York Times Collection



246.2017
John Cobb's New 350 Miles per Hour Car
Unknown photographer
1938
Gelatin silver print
9 3/8 × 6 15/16" (23.8 × 17.6 cm)
Thomas Walther Collection. Gift of Thomas Walther



56.1985
Portrait of the Artist as a Young Woman
Berenice Abbott
Negative c. 1930/Distortion c. 1950
Gelatin silver print
12 3/4 × 10 1/8" (32.6 × 25.7 cm)
Frances Keech Fund in honor of Monroe Wheeler



1021.2015
Erdmannsdorfer Mannequins
Josef Albers
1930/1932
Gelatin silver prints mounted to board
Overall 16 3/8 × 11 5/8" (41.6 × 29.5 cm)
Acquired through the generosity of Jo Carole and Ronald S. Lauder, and
Jon L. Stryker

Fifth Floor, 1880s-1940s

510 Machines, Mannequins, and Monsters



257.1988

Laughing Mannequins

Manuel Álvarez Bravo

1930

Gelatin silver print

7 3/8 x 9 7/16" (18.8 x 24 cm)

Purchase and partial gift of Marianna Cook



219.2004

Albino Sword Swallower at a Carnival, Maryland

Diane Arbus

1970

Gelatin silver print, printed by Neil Selkirk

14 11/16 x 15 1/16" (37.3 x 38.2 cm)

Purchase



357.1961

Magasin, avenue des Gobelins

Eugène Atget

1925

Gelatin silver printing-out-paper print

8 11/16 x 6 9/16" (22.1 x 16.7 cm)

Gift of James Thrall Soby



1.1969.1544

Magasin, avenue des Gobelins

Eugène Atget

1925

Gelatin silver printing-out-paper print

8 1/4 x 6 1/2" (21 x 16.7 cm)

Abbott-Levy Collection. Partial gift of Shirley C. Burden



1.1969.1545

Avenue des Gobelins

Eugène Atget

1926-27

Gelatin silver printing-out-paper print

9 x 7" (22.8 x 17.8 cm)

Abbott-Levy Collection. Partial gift of Shirley C. Burden

Fifth Floor, 1880s-1940s

510 Machines, Mannequins, and Monsters



1.1969.2454

Boulevard de Strasbourg

Eugène Atget

1912

Gelatin silver printing-out-paper print

Approx. 8 11/16 x 7 1/16" (22 x 18 cm)

Abbott-Levy Collection. Partial gift of Shirley C. Burden



1611.2001

Humanly Impossible

Herbert Bayer

1932

Gelatin silver print

15 5/16 x 11 9/16" (38.9 x 29.3 cm)

Thomas Walther Collection. Acquired through the generosity of Howard Stein



8.1994

The Doll

Hans Bellmer

1935-37

Gelatin silver print

9 1/2 x 9 5/16" (24.1 x 23.7 cm)

Samuel J. Wagstaff, Jr. Fund



942.2013

Wax Museum, Paris

Ilse Bing

c. 1934

Gelatin silver print

8 7/8 x 6 9/16" (22.6 x 16.7 cm)

Bequest of Ilse Bing Wolff



220.2014

Marché aux Puces, Paris

Bill Brandt

c. 1930

Gelatin silver print

9 3/8 x 6 15/16" (23.8 x 17.6 cm)

Acquired through the generosity of David Dechman and Michel Mercure

Fifth Floor, 1880s-1940s

510 Machines, Mannequins, and Monsters



204.1989

Untitled

Henri Cartier-Bresson

c. 1931

Gelatin silver print, printed 1930s

10 15/16 x 9 5/16" (27.8 x 23.7 cm)

Gift of Paul F. Walter



112.1986

Solitude

Giorgio de Chirico

1917

Pencil on paper

8 1/4 x 12 5/8" (22.4 x 32 cm)

Gift of Abby Aldrich Rockefeller (by exchange) and purchase



84.2014

4800 Avenida Díaz Vélez

Horacio Coppola

1936

Gelatin silver print, printed 1952

16 3/4 x 23 1/2" (42.5 x 59.7 cm)

Agnes Rindge Claflin Fund



102.1978

Study for Man and Machine (Skizze zu Mensch und Maschine)

Hannah Höch

1921

Watercolor, gouache, and pencil on paper

11 3/8 x 9 1/2" (29.0 x 24.2 cm)

The Joan and Lester Avnet Collection



315.1965

Quai de Bercy

André Kertész

1926

Gelatin silver print

6 9/16 x 8 7/16" (16.6 x 21.5 cm)

Purchase

Fifth Floor, 1880s-1940s

510 Machines, Mannequins, and Monsters



308.1982

Distortion #117

André Kertész

1933

Gelatin silver print

12 11/16 x 9 1/4" (32.2 x 23.5 cm)

Acquired through the generosity of Blanchette Hooker Rockefeller



1727.2001

Paul Dermée, Enrico Prampolini, Michel Seuphor

André Kertész

1927

Gelatin silver print

3 1/16 x 3 7/8" (7.8 x 9.9 cm)

Thomas Walther Collection. Gift of Thomas Walther



315.1993

Untitled

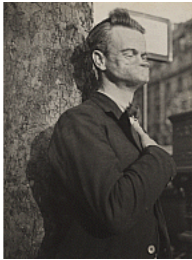
Dora Maar (Henriette Theodora Markovitch)

c. 1935

Gelatin silver print

11 3/4 x 9 3/16" (29.8 x 23.4 cm)

Robert and Joyce Menschel Fund



776.1998

Untitled

Dora Maar (Henriette Theodora Markovitch)

c. 1935

Gelatin silver print

15 3/8 x 11 9/16" (39.1 x 29.4 cm)

Horace W. Goldsmith Fund through Robert B. Menschel



1785.2001

Untitled

Lee Miller

1929-32

Gelatin silver print

9 x 11 1/2" (22.9 x 29.2 cm)

Thomas Walther Collection. Gift of Walker Evans, by exchange

Fifth Floor, 1880s-1940s

510 Machines, Mannequins, and Monsters



987.2018

Yank and Police Marionette

Tina Modotti

1926

Gelatin silver print

9 1/2 × 7 1/2" (24.1 × 19 cm)

Gift of Helen Kornblum in honor of Roxana Marcoci



2086.2001

French War Veteran

Red Cross Institute for Crippled and Disabled Men

c. 1919

Gelatin silver print

4 3/4 × 6 5/8" (12.1 × 16.8 cm)

The New York Times Collection



1873.2001

Untitled, from On the Needles of These Days (Na jehlách těchto dní) (1945)

Jindřich Štyrský

1934-35

Gelatin silver print

3 9/16 × 3 3/8" (9 × 8.5 cm)

Thomas Walther Collection. Abbott-Levy Collection funds, by exchange



1880.2001

Test for the Film "Culte Vaudou," Exposition 1937

Maurice Tabard

1936

Gelatin silver print with cellophane sheet

11 9/16 × 9 1/16" (29.3 × 23 cm)

Thomas Walther Collection. Gift of Shirley C. Burden, by exchange



407.1956

Nude, Mexico

Edward Weston

1925

Palladium print

8 3/8 × 7 5/8" (21.2 × 19.3 cm)

Gift of David H. McAlpin

Fifth Floor, 1880s-1940s

510 Machines, Mannequins, and Monsters



537.1959

Rubber Dummies, Metro Goldwyn Mayer Studios, Hollywood

Edward Weston

1939

Gelatin silver print

7 9/16 x 9 5/8" (19.3 x 24.4 cm)

Gift of Edward Steichen



1913.2001

Articulated Mannequin

Iwao Yamawaki

1931

Gelatin silver print

9 1/16 x 6 13/16" (23 x 17.3 cm)

Thomas Walther Collection. Gift of Thomas Walther