

# The Museum of Modern Art

## Second Floor, 1970-Present

201 Public Images



1161.2007

*Technology/Transformation: Wonder Woman*

Dara Birnbaum

1978-79

Video (color, sound)

5:50 min.

Committee on Media Funds



LN2019.344

*Does Andy Warhol Make You Cry?*

Louise Lawler

1988

Silver dye bleach print with text on Plexiglas wall label

Photograph: 27 1/4 x 39" (69.2 x 99.1 cm)

Label: 4 3/8 x 6 3/8" (11.1 x 16.2 cm)

Courtesy the artist



811.1995

*Untitled Film Still #2*

Cindy Sherman

1977

Gelatin silver print

9 1/2 x 7 9/16" (24.1 x 19.2 cm)

Horace W. Goldsmith Fund through Robert B. Menschel



812.1995

*Untitled Film Still #3*

Cindy Sherman

1977

Gelatin silver print

7 1/16 x 9 7/16" (18 x 24 cm)

Acquired through the generosity of Peter Norton

## Second Floor, 1970-Present

### 201 Public Images



815.1995

*Untitled Film Still #6*

Cindy Sherman

1977

Gelatin silver print

9 7/16 x 6 1/2" (24 x 16.5 cm)

Acquired through the generosity of Jo Carole and Ronald S. Lauder in memory of Eugene M. Schwartz



816.1995

*Untitled Film Still #7*

Cindy Sherman

1978

Gelatin silver print

9 1/2 x 7 9/16" (24.1 x 19.2 cm)

Acquired through the generosity of Sid R. Bass



817.1995

*Untitled Film Still #8*

Cindy Sherman

1978

Gelatin silver print

7 9/16 x 9 1/2" (19.2 x 24.1 cm)

Grace M. Mayer Fund



819.1995

*Untitled Film Still #10*

Cindy Sherman

1978

Gelatin silver print

7 5/16 x 9 7/16" (18.6 x 24 cm)

Acquired through the generosity of Jo Carole and Ronald S. Lauder



822.1995

*Untitled Film Still #13*

Cindy Sherman

1978

Gelatin silver print

9 7/16 x 7 1/2" (24 x 19.1 cm)

Acquired through the generosity of Jo Carole and Ronald S. Lauder in memory of Eugene M. Schwartz

## Second Floor, 1970-Present

### 201 Public Images



823.1995  
*Untitled Film Still #14*  
Cindy Sherman  
1978  
Gelatin silver print  
9 7/16 x 7 1/2" (24 x 19.1 cm)  
Acquired through the generosity of Peter Norton



824.1995  
*Untitled Film Still #15*  
Cindy Sherman  
1978  
Gelatin silver print  
9 7/16 x 7 1/2" (24 x 19.1 cm)  
Acquired through the generosity of Barbara and Eugene Schwartz in honor of Jo Carole and Ronald S. Lauder



825.1995  
*Untitled Film Still #16*  
Cindy Sherman  
1978  
Gelatin silver print  
9 7/16 x 7 9/16" (24 x 19.2 cm)  
Acquired through the generosity of Jo Carole and Ronald S. Lauder in memory of Eugene M. Schwartz



830.1995  
*Untitled Film Still #21*  
Cindy Sherman  
1978  
Gelatin silver print  
7 1/2 x 9 1/2" (19.1 x 24.1 cm)  
Horace W. Goldsmith Fund through Robert B. Menschel



833.1995  
*Untitled Film Still #24*  
Cindy Sherman  
1978  
Gelatin silver print  
6 7/16 x 9 7/16" (16.4 x 24 cm)  
Purchase

## Second Floor, 1970-Present

### 201 Public Images



836.1995  
*Untitled Film Still #27*  
Cindy Sherman  
1979  
Gelatin silver print  
9 7/16 x 6 11/16" (24 x 17 cm)  
Acquired through the generosity of Peter Norton



844.1995  
*Untitled Film Still #34*  
Cindy Sherman  
1979  
Gelatin silver print  
9 7/16 x 7 9/16" (24 x 19.2 cm)  
Horace W. Goldsmith Fund through Robert B. Menschel



849.1995  
*Untitled Film Still #39*  
Cindy Sherman  
1979  
Gelatin silver print  
9 7/16 x 6 1/16" (24 x 15.4 cm)  
Purchase



852.1995  
*Untitled Film Still #42*  
Cindy Sherman  
1979  
Gelatin silver print  
7 1/2 x 8 11/16" (19.1 x 22.1 cm)  
Grace M. Mayer Fund



853.1995  
*Untitled Film Still #43*  
Cindy Sherman  
1979  
Gelatin silver print  
7 9/16 x 9 7/16" (19.2 x 24 cm)  
Acquired through the generosity of Sid R. Bass

## Second Floor, 1970-Present

### 201 Public Images



856.1995

*Untitled Film Still #46*

Cindy Sherman

1979

Gelatin silver print

7 9/16 x 9 7/16" (19.2 x 24 cm)

Horace W. Goldsmith Fund through Robert B. Menschel



858.1995

*Untitled Film Still #48*

Cindy Sherman

1979

Gelatin silver print

7 7/16 x 9 7/16" (18.9 x 24 cm)

Acquired through the generosity of Jo Carole and Ronald S. Lauder in memory of Eugene M. Schwartz



864.1995

*Untitled Film Still #54*

Cindy Sherman

1980

Gelatin silver print

6 13/16 x 9 7/16" (17.3 x 24 cm)

Acquired through the generosity of Peter Norton



866.1995

*Untitled Film Still #56*

Cindy Sherman

1980

Gelatin silver print

6 3/8 x 9 7/16" (16.2 x 24 cm)

Acquired through the generosity of Jo Carole and Ronald S. Lauder in memory of Mrs. John D. Rockefeller 3rd



867.1995

*Untitled Film Still #57*

Cindy Sherman

1980

Gelatin silver print

6 9/16 x 9 7/16" (16.7 x 24 cm)

Purchase

## Second Floor, 1970-Present

201 Public Images



868.1995  
*Untitled Film Still #58*  
Cindy Sherman  
1980  
Gelatin silver print  
6 5/16 x 9 7/16" (16 x 24 cm)  
Grace M. Mayer Fund



876.1995  
*Untitled Film Still #82*  
Cindy Sherman  
1980  
Gelatin silver print  
9 7/16 x 6 9/16" (24 x 16.7 cm)  
Purchase



396.2003  
*Untitled Film Still #62*  
Cindy Sherman  
1977  
Gelatin silver print  
6 1/4 x 9 5/16" (15.9 x 23.6 cm)  
Gift of the photographer

## Second Floor, 1970-Present

202 Downtown New York



694.2017  
*Untitled*  
Alvin Baltrop  
1975-86  
Gelatin silver print  
4 5/8 × 7 1/8" (11.7 × 18.1 cm)  
The Family of Man Fund



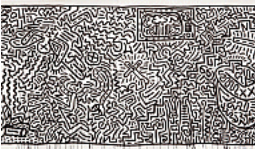
697.2017  
*Untitled*  
Alvin Baltrop  
1975-86  
Gelatin silver print  
4 5/8 × 7" (11.7 × 17.8 cm)  
The Family of Man Fund



EL2014.1278  
*Glenn*  
Jean-Michel Basquiat  
1985  
Acrylic, oilstick and Xerox collage on canvas  
100 x 114" (254 x 289.6 cm)



1324.2000.a-c  
*Perforated Metal Settee and Perforated Metal Chairs*  
Scott Burton  
1988-89  
Aluminum  
Settee 33 3/8 x 34 7/8 x 60 1/8" (84.8 x 88.6 x 152.7 cm); each chair 33 1/16 x 24 1/2 x 31 1/4" (84 x 62.2 x 79.4 cm)  
Scott Burton Fund  
*Note: only chairs will be on view*



495.1992.a-b  
*Untitled*  
Keith Haring  
1982  
Ink on two sheets of paper  
Sheet: 72 x 671 1/2" (182.9 x 1705.6cm)  
Part (panel a): 72 x 360 3/4" (182.9 x 916.3 cm)  
Part (panel b): 72 x 310 1/4" (182.9 x 788 cm)  
Gift of the Estate of Keith Haring, Inc.

## Second Floor, 1970-Present

202 Downtown New York



731.2018

*Trust visions that don't feature buckets of blood*

Jenny Holzer

1983-84

Spray paint on canvas

107 7/8 x 119 3/4" (274 x 304 cm)

Committee on Painting and Sculpture Funds, and gift of The Modern Women's Fund



187.1996

*Pink Panther*

Jeff Koons

1988

Porcelain on formica base

41 x 20 1/2 x 19" (104.1 x 52 x 48.2 cm)

Gift of Werner and Elaine Dannheisser



863.2011

*Stanton near Forsyth Street*

Martin Wong

1983

Acrylic on canvas

48 x 64" (121.9 x 162.6 cm)

Gift of the Contemporary Arts Council of The Museum of Modern Art; Steven Johnson and Walter Sudol; and James Keith Brown and Eric Diefenbach



## Second Floor, 1970-Present

203 Hardware/Software



897.2016  
*Marker Cones*  
Jimmy DeSana  
1982  
Silver dye bleach print  
14 1/4 × 18 3/4" (36.2 × 47.6 cm)  
Gift of Laurie Simmons



898.2016  
*Cowboy Boots*  
Jimmy DeSana  
1984  
Silver dye bleach print  
19 × 12 3/4" (48.3 × 32.4 cm)  
Gift of Laurie Simmons



206.2018  
*Leaning*  
Maren Hassinger  
1980  
Wire rope and wire, 32 bundles  
Each 16" (40.6 cm) high  
Acquired through the generosity of The Modern Women's Fund and Ronnie Heyman



11.1986.1  
*Untitled from Untitled*  
Barbara Kruger  
1985  
Offset lithograph and screenprint with lithograph from a portfolio of nine offset lithographs and screenprints (seven with lithograph, one with chine collé, and one with embossing)  
composition and sheet: 20 1/2 × 20 1/2" (52.1 × 52.1 cm)  
The Charles A. Dana Foundation Fund



11.1986.2  
*Untitled from Untitled*  
Barbara Kruger  
1985  
Offset lithograph and screenprint with lithograph from a portfolio of nine offset lithographs and screenprints (seven with lithograph, one with chine collé, and one with embossing)  
composition and sheet: 20 1/2 × 20 1/2" (52.1 × 52.1 cm)  
The Charles A. Dana Foundation Fund

## Second Floor, 1970-Present

203 Hardware/Software



11.1986.3

*Untitled from Untitled*

Barbara Kruger

1985

Offset lithograph and screenprint with lithograph from a portfolio of nine offset lithographs and screenprints (seven with lithograph, one with chine collé, and one with embossing)

composition and sheet: 20 1/2 × 20 1/2" (52.1 × 52.1 cm)

The Charles A. Dana Foundation Fund



11.1986.4

*Untitled from Untitled*

Barbara Kruger

1985

Offset lithograph and screenprint with lithograph from a portfolio of nine offset lithographs and screenprints (seven with lithograph, one with chine collé, and one with embossing)

composition and sheet: 20 1/2 × 20 1/2" (52.1 × 52.1 cm)

The Charles A. Dana Foundation Fund



11.1986.5

*Untitled from Untitled*

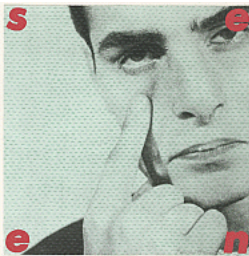
Barbara Kruger

1985

Offset lithograph and screenprint from a portfolio of nine offset lithographs and screenprints (seven with lithograph, one with chine collé, and one with embossing)

composition and sheet: 20 1/2 × 20 1/2" (52.1 × 52.1 cm)

The Charles A. Dana Foundation Fund



11.1986.6

*Untitled from Untitled*

Barbara Kruger

1985

Offset lithograph and screenprint with lithograph from a portfolio of nine offset lithographs and screenprints (seven with lithograph, one with chine collé, and one with embossing)

composition and sheet: 20 1/2 × 20 1/2" (52.1 × 52.1 cm)

The Charles A. Dana Foundation Fund

## Second Floor, 1970-Present

203 Hardware/Software



11.1986.7

*Untitled from Untitled*

Barbara Kruger

1985

Offset lithograph and screenprint with lithograph and chine collé from a portfolio of nine offset lithographs and screenprints (seven with lithograph, one with chine collé, and one with embossing)

composition and sheet: 20 1/2 × 20 1/2" (52.1 × 52.1 cm)

The Charles A. Dana Foundation Fund



11.1986.8

*Untitled from Untitled*

Barbara Kruger

1985

Offset lithograph and screenprint with lithograph and embossing from a portfolio of nine offset lithographs and screenprints (seven with lithograph, one with chine collé, and one with embossing)

composition and sheet: 20 1/2 × 20 1/2" (52.1 × 52.1 cm)

The Charles A. Dana Foundation Fund



11.1986.9

*Untitled from Untitled*

Barbara Kruger

1985

Offset lithograph and screenprint from a portfolio of nine offset lithographs and screenprints (seven with lithograph, one with chine collé, and one with embossing)

composition and sheet: 20 1/2 × 20 1/2" (52.1 × 52.1 cm)

The Charles A. Dana Foundation Fund



PG250.2014

*Transparent Self-Portrait*

Maria Lassnig

1987

Oil on canvas

49 1/4 × 39 1/2" (124.8 × 100.3 cm)

Promised gift of Marie-Josée and Henry R. Kravis



857.2011

*R.S.V.P. I*

Senga Nengudi

1977/2003

Pantyhose and sand, 10 pieces

Overall dimensions variable

Committee on Painting and Sculpture Funds, and The Friends of Education of The Museum of Modern Art

## Second Floor, 1970-Present

203 Hardware/Software



790.2017

*Night Light*

Joan Semmel

1978

Oil on canvas

50 × 98" (127 × 248.9 cm)

Gift of Jeffrey M. Resnick in honor of Zina W. Davis



89.2016

*Walking House*

Laurie Simmons

1989

Silver dye bleach print

64 × 46" (162.6 × 116.8 cm)

The Abramson Collection. Gift of Stephen and Sandra Abramson

## Second Floor, 1970-Present

204 Gretchen Bender's *Dumping Core*



244.2016

*Dumping Core*

Gretchen Bender

1984

Four-channel video (color, sound; 13 min.) and thirteen monitors

Dimensions variable

The Modern Women's Fund

## Second Floor, 1970-Present

205 Print, Fold, Send



308.1986.a-b

*8 Sobrevivientes (8 Survivors)*

Eugenio Dittborn

1986

Screenprint and screenprinted envelope with felt-tip pen additions and cut-and-pasted printed paper

sheet (unfolded): 79 7/8 x 60 1/2" (202.9 x 153.7 cm); envelope: 20 11/16 x 15 15/16" (52.5 x 40.5 cm)

Purchase



259.2007

*Reciprocal Spectators (Espectadores recíprocos) from Heliographs (Heliografías)*

León Ferrari

1981, signed 2007

One from a series of twenty-seven diazotypes

composition: 31 1/4 x 41 1/4" (79.3 x 104.8 cm); sheet: 31 15/16 x 43 1/4" (81.2 x 109.8 cm)

Gift of the artist



260.2007

*Study (Estudo) from Heliographs (Heliografías)*

León Ferrari

1981, signed 2007

One from a series of twenty-seven diazotypes

composition: 34 1/4 x 34 1/4" (87 x 87 cm); sheet: 36 5/8 x 35 13/16" (93 x 91 cm)

Gift of the artist



261.2007

*Footbridge (Passarela) from Heliographs (Heliografías)*

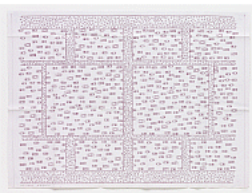
León Ferrari

1981, signed 2007

One from a series of twenty-seven diazotypes

composition (irreg.): 39 9/16 x 58 11/16" (100.5 x 149 cm); sheet: 42 5/16 x 61 15/16" (107.4 x 157.3 cm)

Gift of the artist



262.2007

*Footbridges (Passarelas) from Heliographs (Heliografías)*

León Ferrari

1981, printed 2007

One from a series of twenty-seven diazotypes

composition: 29 11/16 x 41" (75.4 x 104.2 cm); sheet: 31 3/8 x 42 13/16" (79.7 x 108.8 cm)

Gift of the artist

## Second Floor, 1970-Present

205 Print, Fold, Send



265.2007

*Southern Highway (Autopista del sur) from Heliographs (Heliografias)*

León Ferrari

1982, signed 2007

One from a series of twenty-seven diazotypes

composition: 39 3/16 x 37 13/16" (99.5 x 96 cm); sheet: 41 3/4 x 40 3/8" (106 x 102.5 cm)

Gift of the artist



266.2007

*Beds (Camás) from Heliographs (Heliografias)*

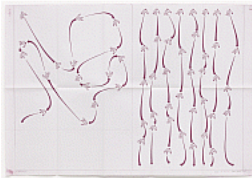
León Ferrari

c. 1982, signed 2007

One from a series of twenty-seven diazotypes

composition: 30 1/4 x 44 15/16" (76.8 x 114.1 cm); sheet: 34 7/16 x 45 1/16" (87.4 x 114.5 cm)

Gift of the artist



267.2007

*Paths (Caminos) from Heliographs (Heliografias)*

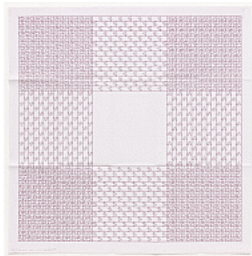
León Ferrari

1982, signed 2007

One from a series of twenty-seven diazotypes

composition (irreg.): 24 3/4 x 34 1/16" (62.8 x 86.5 cm); sheet: 27 1/16 x 39 5/16" (68.7 x 99.8 cm)

Gift of the artist



268.2007

*Square (Cuadrado) from Heliographs (Heliografias)*

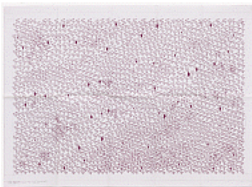
León Ferrari

1982, signed 2007

One from a series of twenty-seven diazotypes

composition: 35 11/16 x 35 1/2" (90.7 x 90.2 cm); sheet: 39 1/8 x 38 9/16" (99.3 x 98 cm)

Gift of the artist



269.2007

*Destiny (Destino) from Heliographs (Heliografias)*

León Ferrari

c. 1982, signed 2007

One from a series of twenty-seven diazotypes

composition (irreg.): 23 5/8 x 35 3/16" (60 x 89.3 cm); sheet: 27 9/16 x 37 15/16" (70 x 96.4 cm)

Gift of the artist

## Second Floor, 1970-Present

205 Print, Fold, Send



275.2007

*Spiral (Espiral) from Heliographs (Heliografias)*

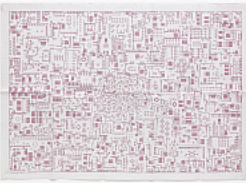
León Ferrari

c. 1983, signed 2007

One from a series of twenty-seven diazotypes

composition (irreg.): 23 1/8 x 17 15/16" (58.8 x 45.6 cm); sheet: 24 1/16 x 18 15/16" (61.1 x 48.1 cm)

Gift of the artist



279.2007

*Untitled (Sin titulo) from Heliographs (Heliografias)*

León Ferrari

1986, signed 2007

One from a series of twenty-seven diazotypes

composition: 25 1/8 x 36 5/8" (63.8 x 93 cm); sheet: 27 9/16 x 39 7/16" (70 x 100.1 cm)

Gift of the artist



280.2007

*Writing (Escritura) from Heliographs (Heliografias)*

León Ferrari

c. 1980, signed 2007

One from a series of twenty-seven diazotypes

composition: 36 5/16 x 70 1/4" (92.2 x 178.5 cm); sheet: 42 5/16 x 78 3/8" (107.4 x 199 cm)

Gift of the artist



1369.2009.1-6

*Zócalo de la comedia*

Beatriz González

1983

Set of six linoleum cuts

sheet (each approx.): 27 9/16 x 39 3/8" (71 x 101.1 cm)

Latin American and Caribbean Fund



1370.2009.1-6

*Zócalo de la tragedia*

Beatriz González

1983

Set of six linoleum cuts

sheet (each approx.): 39 13/16 x 27 15/16" (101.1 x 71 cm)

Latin American and Caribbean Fund



## Second Floor, 1970-Present

205 Print, Fold, Send



368.1991

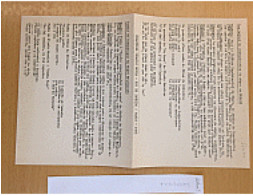
*Lung*

Jac Leirner

1987

Marlboro cigarette packages strung on a polyurethane cord  
Dimensions variable, 14' 5 1/4" (440 cm) to 15' 9" (480 cm) wide  
David Rockefeller Fund for Latin-American Art and Brazil Fund

### Case 1



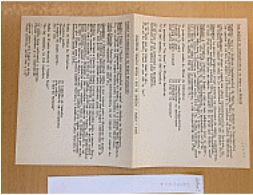
300335152.10

*Basta de corturas! (Stop cortures!)*

Archive Small Press and Communication

1977

The Museum of Modern Art Library



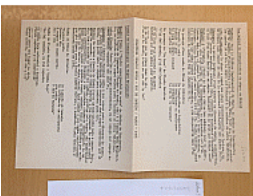
300335152.12

*Addresses of Lost Friends*

Archive Small Press and Communication

1977

The Museum of Modern Art Library



300335152.13

*Hey You, Country Without a Name*

Archive Small Press and Communication

1973

The Museum of Modern Art Library



300360769.2

*Desaparecida*

Roberto Barbosa

1975

Offset lithography

The Museum of Modern Art Library

## Second Floor, 1970-Present

205 Print, Fold, Send



300149738

*El presente trabajo es la reedición de dos publicaciones anteriores*

Eugenio Dittborn

1981

The Museum of Modern Art Library



300341955.1-25

*America en papel*

Carlos Echeverry

April 1982

The Museum of Modern Art Library



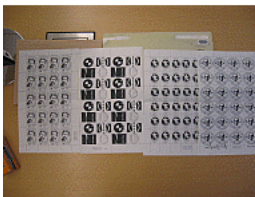
300312152.1

*No Captions: a Photographic Installation*

Alfredo Jaar

June 1-30 1984

The Museum of Modern Art Library



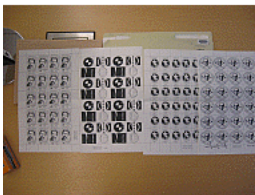
300297162.1

*Republica Socialista del Uruguay*

Clemente Padin

1985

The Museum of Modern Art Library



300297162.4

*United States of America Argentina*

Clemente Padin

1989

The Museum of Modern Art Library

## Second Floor, 1970-Present

205 Print, Fold, Send



300297162.8  
*[card name tk]*  
Clemente Padin  
n.d.  
The Museum of Modern Art Library



300297162.9  
*CIA*  
Clemente Padin  
n.d.  
The Museum of Modern Art Library



300297162.10  
*Libertad de todos los presos politicos*  
Clemente Padin  
n.d.  
The Museum of Modern Art Library



300297162.13  
*USAF*  
Clemente Padin  
n.d.  
The Museum of Modern Art Library



300297162.14  
*Amnista*  
Clemente Padin  
n.d.  
The Museum of Modern Art Library

## Second Floor, 1970-Present

205 Print, Fold, Send



300297162.15

*Libertad de todos los presos politicos*

Clemente Padin

n.d.

The Museum of Modern Art Library



300373449

*Happy Bicentennial*

Clemente Padin

1976

The Museum of Modern Art Library



300316808

*Soberania*

Clemente Padin

1982

[4] sheets : ill. ; 22 x 36 cm., folded to 22 x 18 cm.

The Museum of Modern Art Library



300193346

*Executivas*

Regina Silveira

1977

The Museum of Modern Art Library



300193347

*Topografia*

Regina Silveira

1978

1 folded sheet (6 p.) : ill. ; 11 x 16 cm.

The Museum of Modern Art Library

## Second Floor, 1970-Present

205 Print, Fold, Send

Case 2



300296730.2  
*[untitled]*  
Paulo Bruscky  
n.d.  
Photocopy  
The Museum of Modern Art Library



300296730.4  
*Copy*  
Paulo Bruscky  
n.d.  
The Museum of Modern Art Library



300360774.19  
*[Mona Lisa mask]*  
Maris Bustamente  
n.d.  
The Museum of Modern Art Library



300323806  
*Livre de Viande*  
Artur Alipio Barrio de Sousa Lopes  
[1980]  
book: 7 11/16 x 7 7/8 x 1 3/8" (19.5 x 20 x 3.5 cm)  
enclosure: 8 1/16 x 8 1/4 x 1 11/16" (20.5 x 21 x 4.3 cm)  
The Museum of Modern Art Library



300193357.1  
*O Pão Nosso de cada dia*  
Anna Bella Geiger  
1979  
Offset  
12 x 17 cm  
The Museum of Modern Art Library

## Second Floor, 1970-Present

205 Print, Fold, Send



300193357.1-7

*O Pão Nosso de cada dia*

Anna Bella Geiger

1979

Offset

6 cards, each 12 x 17 cm., in paper bag (44 cm.)

The Museum of Modern Art Library



300193357.2

*O Pão Nosso de cada dia*

Anna Bella Geiger

1979

Offset

12 x 17 cm

The Museum of Modern Art Library



300193357.7

*O Pão Nosso de cada dia*

Anna Bella Geiger

1979

Paper bag

44 cm

The Museum of Modern Art Library



591.2016

*Caderno de referência no. 70*

Hudinilson Jr.

c. 2000

Scrapbook with photocopies and cut-and-pasted printed paper on paper  
10 5/8 x 8 1/4 x 2 3/4" (27 x 21 x 7 cm)

Gift of the artist's estate through the Latin American and Caribbean Fund



300301464

*Autocópias*

Claudio Perna

1975

The Museum of Modern Art Library

## Second Floor, 1970-Present

205 Print, Fold, Send

Case 3



300298287.1  
*Table of Mail Art Works*  
Ulises Carrión  
n.d.  
The Museum of Modern Art Library



300188661  
*O domador de boca*  
Ulises Carrión  
1978  
The Museum of Modern Art Library



300325747.1  
*Seeing Mail*  
Ulises Carrión  
1981  
The Museum of Modern Art Library

300315803.5  
*Limite*  
Augusto de Campos  
1980  
The Museum of Modern Art Library



300377331  
*Diario. No. 1 Año 1*  
Mirtha Dermisache  
September 1972  
48 x 73 cm.  
The Museum of Modern Art Library

## Second Floor, 1970-Present

205 Print, Fold, Send



300169121  
*Poesías*  
León Ferrari  
1980  
The Museum of Modern Art Library



300315808.1  
*The Place of Arts in Society*  
Graciela Gutiérrez Marx  
1982  
Photocopy  
The Museum of Modern Art Library



300299957  
*Reconstruction Project*  
Sabra Moore  
1984  
The Museum of Modern Art Library

300160488  
*Saborami*  
Cecilia Vicuña  
1973  
The Museum of Modern Art Library



1231.2018  
*What is Poetry to You?*  
Cecilia Vicuña  
1980  
16mm film transferred to video (color, sound)  
23:20 min.  
Latin American and Caribbean Fund



## Second Floor, 1970-Present

205 Print, Fold, Send

Case 4



300360705.9  
*Gang, performance Interversão*  
Belisario Franca  
1982  
The Museum of Modern Art Library



300360705.8  
*Revolução, A Bandalha de Teresa Jardim*  
Teresa Jardim  
1980-1981  
The Museum of Modern Art Library



300360705.1  
*CRy\$&*  
Eduardo Kac  
1980  
The Museum of Modern Art Library



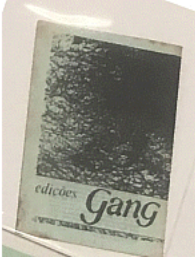
300360705.2  
*Overgoze*  
Eduardo Kac  
1980  
The Museum of Modern Art Library



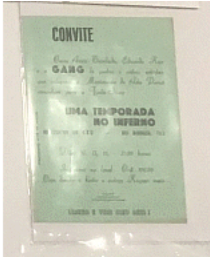
300360705.3  
*Escracho*  
Eduardo Kac  
1983  
The Museum of Modern Art Library

## Second Floor, 1970-Present

205 Print, Fold, Send



300360705.5  
*Gang* Edições  
Eduardo Kac  
March 1980-February 1981  
The Museum of Modern Art Library



300360705.6  
*Uma temporada no inferno*  
Eduardo Kac  
1980  
The Museum of Modern Art Library

300360705.7  
*Gang*, no. 3  
Eduardo Kac  
September 1981  
The Museum of Modern Art Library



1220.2018  
*Reabracadabra*  
Eduardo Kac  
1985  
Minitel terminal, digital poem transferred to video (color, silent; 35 sec.)  
9 5/8 × 9 13/16 × 9 5/8" (24.5 × 25 × 24.5 cm)  
Gift of Adriana Cisneros, Alec Oxenford and the Latin American and Caribbean Fund



300360705.10  
*Pornô comics*, no. 1  
Glauco Mattoso  
1982  
The Museum of Modern Art Library

## Second Floor, 1970-Present

205 Print, Fold, Send



300360705.4

*Jornal Dorbrabil*

Cora Ronái

1983

The Museum of Modern Art Library



300360705.11

*Quem e da Nossa Gang Não Tem Medo*

Cairo Trindade

1980

The Museum of Modern Art Library

## Second Floor, 1970-Present

### 206 Transfigurations



726.2018

*Memorial for an Art World Body (Nevermore)*

Jo Baer

2009

Oil on unstretched canvas

72 x 60 1/4" (182.9 x 153 cm)

Gift of Marie-Josée and Henry R. Kravis in honor of Kenneth C. Griffin's 50th birthday



536.2013.1

*Medea's Hypostases II*

Geta Brătescu

1980

Drawing with sewing machine on textile

35 7/16 x 23 5/8" (90 x 60 cm)

The Modern Women's Fund



536.2013.2

*Medea's Hypostases III*

Geta Brătescu

1980

Drawing with sewing machine on textile

35 7/16 x 23 5/8" (90 x 60 cm)

The Modern Women's Fund



536.2013.3

*Medea's Hypostases IV*

Geta Brătescu

1980

Drawing with sewing machine on textile

35 7/16 x 23 5/8" (90 x 60 cm)

The Modern Women's Fund



720.1996.a-x

*Chlorosis (Love sick)*

Marlene Dumas

1994

Ink, gouache, and acrylic on twenty-four sheets of paper

Each: 26 x 19 1/2" (66.2 x 49.5 cm)

The Herbert and Nannette Rothschild Memorial Fund in memory of Judith Rothschild

## Second Floor, 1970-Present

### 206 Transfigurations



436.2017

*The Splendor of Myself II*

Zofia Kulik

1997

Nine gelatin silver prints

Overall 59 1/16 × 42 1/2" (150 × 108 cm)

Acquired with support from The Modern Women's Fund



167.1992

*Nile Born*

Ana Mendieta

1984

Sand and binder on wood

2 3/4 x 19 1/4 x 61 1/2" (7 x 48.9 x 156.2 cm)

Gift of Agnes Gund



269.2017

*Yakshi*

Mrinalini Mukherjee

1984

Dyed hemp

97 × 48 × 29" (246.4 × 121.9 × 73.7 cm)

Committee on Painting and Sculpture Funds, and acquired through the generosity of Marlene Hess and James D. Zirin and the Modern Women's Fund



1155.2007

*Tanya as Bandit*

Cady Noland

1989

Silkscreen ink on aluminum, and bandana

72 x 48 x 3/8" (182.9 x 121.9 x 1 cm)

Gift of Kathy and Richard S. Fuld, Jr.



78.2014

*Untitled (Mlle Bourgeoise Noire)*

Lorraine O'Grady

1980-83/2009

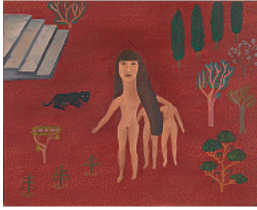
Fourteen gelatin silver prints, printed 2014

Each, approx. 8 1/2 x 10" (21.6 x 25.4 cm)

Committee on Media and Performance Art Funds

## Second Floor, 1970-Present

206 Transfigurations



737.2018

*Black Panther and Me (ii)*

Cecilia Vicuña

Bogotá 1978

Oil on canvas

26 1/2 x 33" (67.3 x 83.8 cm)

Latin American and Caribbean Fund

## Second Floor, 1970-Present

### 207 Before and After Tiananmen



232.2018  
*Untitled from Communication Series 2*  
Cang Xin  
1999  
Chromogenic color print  
24 × 20" (61 × 50.8 cm)  
Committee on Photography Fund



233.2018  
*Untitled from Communication Series 2*  
Cang Xin  
1999  
Chromogenic color print  
24 × 20" (61 × 50.8 cm)  
Committee on Photography Fund



234.2018  
*Untitled from Communication Series 2*  
Cang Xin  
1999  
Chromogenic color print  
24 × 20" (61 × 50.8 cm)  
Committee on Photography Fund



235.2018  
*Untitled from Communication Series 2*  
Cang Xin  
1999  
Chromogenic color print  
24 × 20" (61 × 50.8 cm)  
Committee on Photography Fund



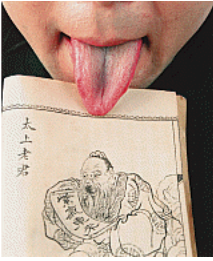
236.2018  
*Untitled from Communication Series 2*  
Cang Xin  
1999  
Chromogenic color print  
24 × 20" (61 × 50.8 cm)  
Committee on Photography Fund

## Second Floor, 1970-Present

### 207 Before and After Tiananmen



237.2018  
*Untitled from Communication Series 2*  
Cang Xin  
1999  
Chromogenic color print  
24 × 20" (61 × 50.8 cm)  
Committee on Photography Fund



238.2018  
*Untitled from Communication Series 2*  
Cang Xin  
1999  
Chromogenic color print  
24 × 20" (61 × 50.8 cm)  
Committee on Photography Fund



239.2018  
*Untitled from Communication Series 2*  
Cang Xin  
1999  
Chromogenic color print  
24 × 20" (61 × 50.8 cm)  
Committee on Photography Fund



298.2018.a-b.x1-x2  
*Breathing*  
Song Dong  
1996  
Two color transparencies (diptych), two light boxes, printed 2018  
Each: 61 1/2 × 91" (156.2 × 231.1 cm)  
Carl Jacobs Fund



732.2018.a-b  
*Trousers with Firecrackers*  
Huang Yong Ping  
Xiamen 1987 (boxed in Paris 1999)  
Trousers, firecrackers, black-and-white photograph and tape in cardboard box,  
in two parts  
31 1/2 × 41 × 2" (80 × 104.1 × 5.1 cm)  
Committee on Painting and Sculpture Funds, and Abby Aldrich Rockefeller  
Fund (by exchange)



## Second Floor, 1970-Present

207 Before and After Tiananmen



733.2018.a-b

*Palanquin*

Huang Yong Ping

1997 (Artist Proof made in 2002)

Bamboo, cane, cushions, colonial hat, and snake skin

122 x 59 3/4 x 19 3/4" (309.9 x 151.8 x 50.2 cm)

Gift of Marlene Hess and James D. Zirin and Jerry I. Speyer and Katherine Farley



187.2008

*Dialogue*

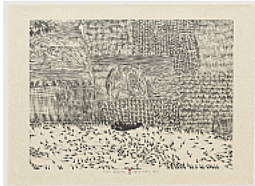
Xiao Lu

1989

Chromogenic color print, printed 2006

31 7/8 x 47 1/8" (81 x 119.7 cm)

Gift of Bingyi Huang



445.2010.1

*Black Tadpoles from Series of Repetitions*

Xu Bing

1988

One from a series of ten woodcuts

composition: 21 9/16 x 29 1/2" (54.8 x 75 cm); sheet: 26 5/16 x 35 13/16" (66.9 x 91 cm)

Riva Castleman Endowment Fund



445.2010.1-10

*Series of Repetitions*

Xu Bing

1987-88

Series of ten woodcuts

sheet: (see child records)

Riva Castleman Endowment Fund



445.2010.2

*Haystack from Series of Repetitions*

Xu Bing

1988

One from a series of ten woodcuts

composition: 18 11/16 x 28 3/16" (47.5 x 71.6 cm); sheet: 26 3/16 x 35 5/8" (66.5 x 90.5 cm)

Riva Castleman Endowment Fund

## Second Floor, 1970-Present

### 207 Before and After Tiananmen



445.2010.3

*Moving Cloud from Series of Repetitions*

Xu Bing

1987

One from a series of ten woodcuts

composition: 20 1/2 x 28 1/4" (52 x 71.8 cm); sheet: 26 x 35 13/16" (66 x 91 cm)

Riva Castleman Endowment Fund



445.2010.4

*Life Pond from Series of Repetitions*

Xu Bing

1987

One from a series of ten woodcuts

composition: 19 7/8 x 26 15/16" (50.5 x 68.5 cm); sheet: 26 1/4 x 35 5/8" (66.7 x 90.5 cm)

Riva Castleman Endowment Fund



445.2010.5

*A Big River from Series of Repetitions*

Xu Bing

1987

One from a series of ten woodcuts

composition: 20 13/16 x 29" (52.8 x 73.7 cm); sheet: 26 1/8 x 35 11/16" (66.4 x 90.6 cm)

Riva Castleman Endowment Fund



445.2010.6

*A Mountain Place from Series of Repetitions*

Xu Bing

1987

One from a series of ten woodcuts

composition: 20 13/16 x 28 13/16" (52.8 x 73.2 cm); sheet: 26 1/4 x 33 9/16" (66.7 x 85.2 cm)

Riva Castleman Endowment Fund



445.2010.7

*Black Pond from Series of Repetitions*

Xu Bing

1987

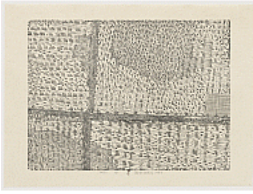
One from a series of ten woodcuts

composition: 19 7/8 x 27 3/4" (50.5 x 70.5 cm); sheet: 25 1/2 x 34 15/16" (64.8 x 88.7 cm)

Riva Castleman Endowment Fund

## Second Floor, 1970-Present

### 207 Before and After Tiananmen



445.2010.8

*Field from Series of Repetitions*

Xu Bing

1987

One from a series of ten woodcuts

composition: 21 9/16 x 29 1/16" (54.8 x 73.8 cm); sheet: 26 5/16 x 35 13/16" (66.8 x 91 cm)

Riva Castleman Endowment Fund



445.2010.9

*Cropland from Series of Repetitions*

Xu Bing

1987

One from a series of ten woodcuts

composition: 21 3/4 x 28 9/16" (55.2 x 72.6 cm); sheet: 26 5/16 x 35 5/8" (66.8 x 90.5 cm)

Riva Castleman Endowment Fund



445.2010.10

*Dry Pond from Series of Repetitions*

Xu Bing

1987

One from a series of ten woodcuts

composition: 21 9/16 x 28 11/16" (54.8 x 72.8 cm); sheet: 26 3/16 x 35 5/8" (66.5 x 90.5 cm)

Riva Castleman Endowment Fund



979.1998

*Document on Hygiene No. 3*

Zhang Peili

1991

Video (color, silent)

36:49 min.

Acquired through the generosity of Sylvia de Cuevas