

Second Floor, 1970-Present

208 True Stories



851.2005.x1-x2

Almerisa, Asylum Center, Leiden, The Netherlands

Rineke Dijkstra

March 14, 1994

Chromogenic color print

13 3/4 x 11" (35 x 28 cm)

Horace W. Goldsmith Fund through Robert B. Menschel



852.2005.x1-x2

Almerisa, Wormer, The Netherlands

Rineke Dijkstra

June 23, 1996

Chromogenic color print

13 3/4 x 11" (35 x 28 cm)

Horace W. Goldsmith Fund through Robert B. Menschel



853.2005.x1-x2

Almerisa, Wormer, The Netherlands

Rineke Dijkstra

February 21, 1998

Chromogenic color print

14 3/8 x 11 1/4" (36.5 x 28.5 cm)

Horace W. Goldsmith Fund through Robert B. Menschel



854.2005.x1-x2

Almerisa, Leidschendam, The Netherlands

Rineke Dijkstra

March 19, 2000

Chromogenic color print

13 3/4 x 11" (35 x 28 cm)

Horace W. Goldsmith Fund through Robert B. Menschel



855.2005.x1-x2

Almerisa, Leidschendam, The Netherlands

Rineke Dijkstra

December 9, 2000

Chromogenic color print

13 9/16 x 10 13/16" (34.5 x 27.5 cm)

Acquired through the generosity of Leila and Melville Straus

Second Floor, 1970-Present

208 True Stories



856.2005.x1-x2

Almerisa, Leidschendam, The Netherlands

Rineke Dijkstra

April 13, 2002

Chromogenic color print

13 3/4 x 11 1/4" (35 x 28.5 cm)

Acquired through the generosity of Leila and Melville Straus



857.2005.x1-x2

Almerisa, Leidschendam, The Netherlands

Rineke Dijkstra

June 25, 2003

Chromogenic color print

13 3/4 x 11 1/4" (35 x 28.5 cm)

Acquired through the generosity of Leila and Melville Straus



858.2005.x1-x2

Almerisa, Leidschendam, The Netherlands

Rineke Dijkstra

March 29, 2005

Chromogenic color print

13 9/16 x 10 7/8" (34.5 x 27.7 cm)

Acquired through the generosity of Leila and Melville Straus



1237.2009.x1-x2

Almerisa, Zoetermeer, The Netherlands

Rineke Dijkstra

March 24, 2007

Chromogenic color print

13 3/4 x 11" (35 x 28 cm)

Horace W. Goldsmith Fund through Robert B. Menschel



1238.2009.x1-x2

Almerisa, Zoetermeer, The Netherlands

Rineke Dijkstra

January 4, 2008

Chromogenic color print

13 11/16 x 11" (34.7 x 28 cm)

Horace W. Goldsmith Fund through Robert B. Menschel

Second Floor, 1970-Present

208 True Stories



1239.2009.x1-x2

Almerisa, Zoetermeer, The Netherlands

Rineke Dijkstra

June 19, 2008

Chromogenic color print

13 11/16 x 11" (34.7 x 28 cm)

Gift of the photographer



421.2004.a-hhh

DeLuxe

Ellen Gallagher

2004-05

Portfolio of sixty with photogravure, aquatint, screenprint, lithograph, etching, and drypoint; some with modelling clay, laser-cut, collage, oil, gouache, pomade, metallic foil, graphite, varnish, acrylic medium, toy eyeballs, chine collé, acrylic, tattoo engraving, embossing, velvet, glitter, crystals, gold leaf, toy ice cube, and plastic sheet additions

each: 13 x 10 1/2" (33 x 26.7 cm); overall: 84 x 167" (213.4 x 424.2 cm)

Acquired through the generosity of The Friends of Education of The Museum of Modern Art and The Speyer Family Foundation, Inc. with additional support from the General Print Fund



1194.2013

Slot Machine

Isa Genzken

1999

Slot machine, paper, chromogenic color prints, and tape

63 x 25 5/8 x 19 2/3" (160 x 65 x 50 cm)

Gift of Brigitte and Arend Oetker



172.1996

Untitled Leg

Robert Gober

1989-90

Beeswax, cotton, wood, leather, and human hair

11 3/8 x 7 3/4 x 20" (28.9 x 19.7 x 50.8 cm)

Gift of the Dannheisser Foundation

Second Floor, 1970-Present

208 True Stories



177.1996.a-b
"Untitled" (Perfect Lovers)
Felix Gonzalez-Torres
1991
Clocks, paint on wall
Overall 14 x 28 x 2 3/4" (35.6 x 71.2 x 7 cm)
Gift of the Dannheisser Foundation



976.2013.1
The Watering Hole I
Lyle Ashton Harris
1996
Chromogenic color print
35 1/2 x 29" (90.2 x 73.7 cm)
Gift of Agnes Gund



976.2013.2
The Watering Hole II
Lyle Ashton Harris
1996
Chromogenic color print
35 1/2 x 29" (90.2 x 73.7 cm)
Gift of Agnes Gund



976.2013.3
The Watering Hole III
Lyle Ashton Harris
1996
Chromogenic color print
35 1/2 x 29" (90.2 x 73.7 cm)
Gift of Agnes Gund



976.2013.4
The Watering Hole IV
Lyle Ashton Harris
1996
Chromogenic color print
35 1/2 x 29" (90.2 x 73.7 cm)
Gift of Agnes Gund

Second Floor, 1970-Present

208 True Stories



976.2013.5
The Watering Hole V
Lyle Ashton Harris
1996
Chromogenic color print
35 1/2 x 29" (90.2 x 73.7 cm)
Gift of Agnes Gund



976.2013.6
The Watering Hole VI
Lyle Ashton Harris
1996
Chromogenic color print
35 1/2 x 29" (90.2 x 73.7 cm)
Gift of Agnes Gund



976.2013.7
The Watering Hole VII
Lyle Ashton Harris
1996
Chromogenic color print
35 1/2 x 29" (90.2 x 73.7 cm)
Gift of Agnes Gund



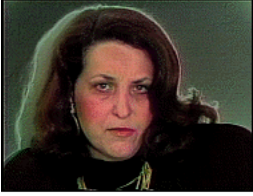
976.2013.8
The Watering Hole VIII
Lyle Ashton Harris
1996
Chromogenic color print
35 1/2 x 29" (90.2 x 73.7 cm)
Gift of Agnes Gund



976.2013.9
The Watering Hole IX
Lyle Ashton Harris
1996
Chromogenic color print
35 1/2 x 29" (90.2 x 73.7 cm)
Gift of Agnes Gund

Second Floor, 1970-Present

208 True Stories



573.2012
The Complete Electronic Diaries
Lynn Hershman Leeson
1984-1996
Video (color, sound)
76 min.
The Modern Women's Fund



740.2005.a-f
Stevens' Bouquet
Roni Horn
1991
Solid aluminum and plastic, six units
Overall 42 x 50 x 15" (106.7 x 127 x 38.1 cm)
Gift of Edward R. Broida



166.2007
Untitled from the series The Raft of the Medusa
Martin Kippenberger
1996
Oil on canvas
78 3/4 x 94 1/2" (200 x 240 cm)
Gift of Leon D. and Debra Black



211.2018.a-c
The Holy Virgin Mary
Chris Ofili
1996
Acrylic, oil, polyester resin, paper collage, glitter, map pins, and elephant dung
on canvas
96 x 72" (243.8 x 182.8 cm)
Gift of Steven and Alexandra Cohen



922.2016.x1-x2
Dyke
Catherine Opie
1993
Chromogenic color print
40 x 30" (101.6 x 76.2 cm)
Committee on Photography Fund and gift of Agnes Gund

Second Floor, 1970-Present

208 True Stories



1254.2012.1.x1-x2

Lacanau (Self)

Wolfgang Tillmans

1986

Chromogenic color print, printed 2012

20 x 24" (50.8 x 61 cm)

The Family of Man Fund, Carol and David Appel Family Fund, and Committee on Photography Fund



1254.2012.3.x1-x2

AIDS, General Idea

Wolfgang Tillmans

1991

Chromogenic color print, printed 2012

3 15/16 x 5 15/16" (10 x 15 cm)

The Family of Man Fund, Carol and David Appel Family Fund, and Committee on Photography Fund



1254.2012.5.x1-x2

grey jeans over stair post

Wolfgang Tillmans

1991

Chromogenic color print, printed 2012

12 x 16" (30.5 x 40.6 cm)

The Family of Man Fund, Carol and David Appel Family Fund, and Committee on Photography Fund



1254.2012.6.x1-x2

Bono

Wolfgang Tillmans

1992

Chromogenic color print, printed 2012

11 15/16 x 8 1/16" (30.4 x 20.5 cm)

The Family of Man Fund, Carol and David Appel Family Fund, and Committee on Photography Fund



1254.2012.7.x1-x2

armpit

Wolfgang Tillmans

1992

Chromogenic color print, printed 2012

5 9/16 x 5 9/16" (14.2 x 14.2 cm)

The Family of Man Fund, Carol and David Appel Family Fund, and Committee on Photography Fund

Second Floor, 1970-Present

208 True Stories



1254.2012.8.x1-x2

Chemistry square, back of head

Wolfgang Tillmans

1992

Chromogenic color print, printed 2012

5 9/16 x 5 9/16" (14.2 x 14.2 cm)

The Family of Man Fund, Carol and David Appel Family Fund, and Committee on Photography Fund



1254.2012.9.x1-x2

Chemistry square, ear

Wolfgang Tillmans

1992

Chromogenic color print, printed 2012

5 9/16 x 5 9/16" (14.2 x 14.2 cm)

The Family of Man Fund, Carol and David Appel Family Fund, and Committee on Photography Fund



1254.2012.10.x1-x2

Chemistry square, smoker

Wolfgang Tillmans

1992

Chromogenic color print, printed 2012

5 9/16 x 5 9/16" (14.2 x 14.2 cm)

The Family of Man Fund, Carol and David Appel Family Fund, and Committee on Photography Fund



1254.2012.11.x1-x2

Lutz & Alex sitting in the trees

Wolfgang Tillmans

1992

Chromogenic color print, printed 2012

24 x 20" (61 x 50.8 cm)

The Family of Man Fund, Carol and David Appel Family Fund, and Committee on Photography Fund



1254.2012.12.x1-x2

outside Planet, view

Wolfgang Tillmans

1992

Chromogenic color print, printed 2012

12 x 16" (30.5 x 40.6 cm)

The Family of Man Fund, Carol and David Appel Family Fund, and Committee on Photography Fund

Second Floor, 1970-Present

208 True Stories



1254.2012.13.x1-x2

four boots

Wolfgang Tillmans

1992

Chromogenic color print, printed 2012

16 x 12" (40.6 x 30.5 cm)

The Family of Man Fund, Carol and David Appel Family Fund, and Committee on Photography Fund



1254.2012.15.x1-x2

Milkspritz

Wolfgang Tillmans

1992

Chromogenic color print, printed 2012

4 1/4 x 6 1/4" (10.8 x 15.8 cm)

The Family of Man Fund, Carol and David Appel Family Fund, and Committee on Photography Fund



1254.2012.17.x1-x2

Macau Bridge

Wolfgang Tillmans

1993

Chromogenic color print, printed 2012

12 x 16" (30.5 x 40.6 cm)

The Family of Man Fund, Carol and David Appel Family Fund, and Committee on Photography Fund



1254.2012.18.x1-x2

Piloten

Wolfgang Tillmans

1993

Chromogenic color print, printed 2012

12 x 16" (30.5 x 40.6 cm)

The Family of Man Fund, Carol and David Appel Family Fund, and Committee on Photography Fund



1254.2012.19.x1-x2

Suzanne & Lutz, white dress, army skirt

Wolfgang Tillmans

1993

Pigmented inkjet print, printed 2012

79 5/8 x 53 1/8" (202.2 x 135 cm)

The Family of Man Fund, Carol and David Appel Family Fund, and Committee on Photography Fund

Second Floor, 1970-Present

208 True Stories



1254.2012.20.x1-x2

Deer Hirsch

Wolfgang Tillmans

1995

Chromogenic color print, printed 2012

20 x 24" (50.8 x 61 cm)

The Family of Man Fund, Carol and David Appel Family Fund, and Committee on Photography Fund



1254.2012.21.x1-x2

moonrise, Puerto Rico

Wolfgang Tillmans

1995

Chromogenic color print, printed 2012

12 x 16" (30.5 x 40.6 cm)

The Family of Man Fund, Carol and David Appel Family Fund, and Committee on Photography Fund



1254.2012.23.x1-x2

police helicopter

Wolfgang Tillmans

1995

Chromogenic color print, printed 2012

20 x 24" (50.8 x 61 cm)

The Family of Man Fund, Carol and David Appel Family Fund, and Committee on Photography Fund



1254.2012.26.x1-x2

Smokin' Jo

Wolfgang Tillmans

1995

Chromogenic color print, printed 2012

16 x 12" (40.6 x 30.5 cm)

The Family of Man Fund, Carol and David Appel Family Fund, and Committee on Photography Fund



1254.2012.27.x1-x2

Alex

Wolfgang Tillmans

1997

Chromogenic color print, printed 2012

24 x 20" (61 x 50.8 cm)

The Family of Man Fund, Carol and David Appel Family Fund, and Committee on Photography Fund

Second Floor, 1970-Present

208 True Stories



1254.2012.28.x1-x2

Jochen taking a bath

Wolfgang Tillmans

1997

Chromogenic color print, printed 2012

16 x 12" (40.6 x 30.5 cm)

The Family of Man Fund, Carol and David Appel Family Fund, and Committee on Photography Fund



1254.2012.29.x1-x2

friends

Wolfgang Tillmans

1998

Chromogenic color print, printed 2012

3 15/16 x 5 7/8" (10 x 15 cm)

The Family of Man Fund, Carol and David Appel Family Fund, and Committee on Photography Fund



1254.2012.30.x1-x2

socks on radiator

Wolfgang Tillmans

1998

Chromogenic color print, printed 2012

16 x 12" (40.6 x 30.5 cm)

The Family of Man Fund, Carol and David Appel Family Fund, and Committee on Photography Fund



935.2016

Young Hee Kim and Gyung-Hwa Han, Ravenswood Apartments, Los Angeles

Christopher Williams

January 24, 1992

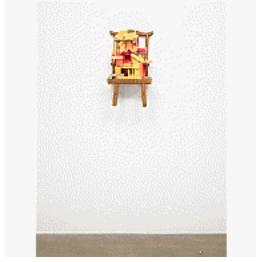
Dye transfer print

12 1/2 x 15 1/2" (31.8 x 39.4 cm)

Gift of Joel Wachs

Second Floor, 1970-Present

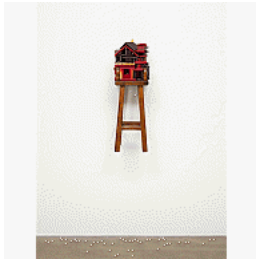
209 Inner and Outer Space



491.2015.1
Un Village sans frontières
Chen Zhen
2000
Wood chair and candles
25 9/16 x 15 x 9 13/16" (65 x 38 x 25 cm)
Enid A. Haupt Fund



491.2015.2
Un Village sans frontières
Chen Zhen
2000
Wood chair and candles
24 13/16 x 15 3/8 x 9 13/16" (63 x 39 x 25 cm)
Gift of Katherine Farley and Jerry Speyer



491.2015.3
Un Village sans frontières
Chen Zhen
2000
Wood chair and candles
37 3/8 x 11 13/16 x 10 1/4" (95 x 30 x 26 cm)
Gift of Marlene Hess and James D. Zirin



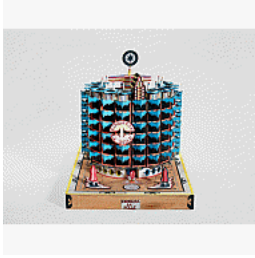
491.2015.4
Un Village sans frontières
Chen Zhen
2000
Wood chair and candles
27 9/16 x 11 x 13 3/4" (70 x 28 x 35 cm)
Gift of Marie-Josée and Henry R. Kravis



491.2015.5
Un Village sans frontières
Chen Zhen
2000
Wood chair and candles
18 7/8 x 11 13/16 x 8 1/4" (48 x 30 x 21 cm)
Gift of Mimi Haas

Second Floor, 1970-Present

209 Inner and Outer Space



128.2019

Kinshasa la Belle

Bodys Isek Kingelez

1991

Paper, colored paper, paperboard, wood, colored plastic, metallic foil paper, foamcore, pencil, marker, adhesive, mesh fabric, and metal pins

24 13/16 × 21 5/8 × 31 1/2" (63 × 55 × 80 cm)

CAAC-The Pigozzi Collection. Gift of Jean Pigozzi



131.2019

U.N.

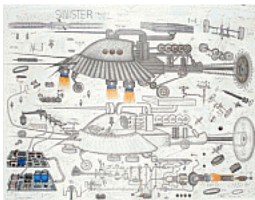
Bodys Isek Kingelez

1995

Colored paper, paperboard, plastic, aluminum foil, metallic foil paper, foamcore, pencil, crayon, marker, adhesive, colored tape, metallic tape, fabric, copper wire, toothpicks, map pins, metal pins, and plastic bottle caps

35 13/16 × 29 1/8 × 20 7/8" (91 × 74 × 53 cm), irreg.

CAAC-The Pigozzi Collection. Gift of Jean Pigozzi



113.2019

Sinister Project

Abu Bakarr Mansaray

2006

Graphite and colored ink on paper

59 1/16 × 80 11/16" (150 × 205 cm)

CAAC - The Pigozzi Collection. Gift of Jean Pigozzi



323.2004

Empirical Construction, Istanbul

Julie Mehretu

2003

Acrylic and ink on canvas

10' x 15' (304.8 x 457.2 cm)

Fund for the Twenty-First Century



85.2010

Widowed House IV

Doris Salcedo

1994

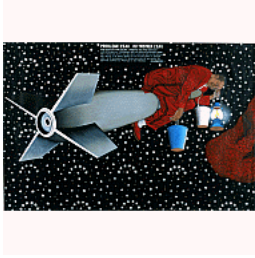
Wood, fabric, and bones

102 5/16 x 18 1/2 x 13" (259.9 x 47 x 33 cm)

Committee on Painting and Sculpture Funds, Latin American and Caribbean Fund, and gift of Patricia Phelps de Cisneros

Second Floor, 1970-Present

209 Inner and Outer Space



140.2019

Water Problem

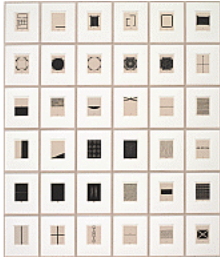
Chéri Samba

2004

Acrylic on canvas

53 1/8 x 78 3/4" (135 x 200 cm)

CAAC-The Pigozzi Collection. Gift of Jean Pigozzi



1371.2009.1-36

Home Is a Foreign Place

Zarina

1999

Portfolio of thirty-six woodcuts with letterpress additions, mounted on paper

composition (each): 8 x 6" (20.3 x 15.2 cm); sheet (each): 16 x 13" (40.7 x 33 cm)

Acquired through the generosity of Marie-Josée and Henry R. Kravis in honor of Edgar Wachenheim III

Second Floor, 1970-Present

210 Richard Serra's *Equal*



504.2015.a-d

Equal

Richard Serra

2015

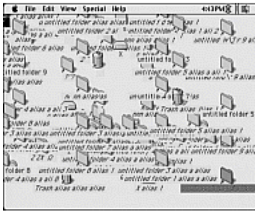
Forged weatherproof steel, 8 blocks

Each block 60 x 66 x 72" (152.4 x 167.6 x 182.9 cm)

Gift of Sidney and Harriet Janis (by exchange), Enid A. Haupt Fund, and Gift of William B. Jaffe and Evelyn A. J. Hall (by exchange)

Second Floor, 1970-Present

211 JODI's *My%Desktop*



305.2015

My%Desktop

JODI

2002

Four-channel video (color, sound)

20 min.

Committee on Media and Performance Art Funds

Second Floor, 1970-Present

212 Sheela Gowda's *of all people*



205.2018

Of All People

Sheela Gowda

2011

Wood doors, shutters, doorframes, windows, pillars, table and fragments, framed photographs, wood chips, and metal chains

Overall dimensions variable

Committee on Painting and Sculpture Funds

Second Floor, 1970-Present

213 Wu Tsang's *We hold where study*



1230.2018

We hold where study

Wu Tsang

2017

Two-channel video (color, sound)

18:56 min. Dimensions variable.

The Modern Women's Fund

Second Floor, 1970-Present

214 Surface Tension



269.2013.a-d.x1-x3

Autocar--Tangier, Figs. 1-4

Yto Barrada

2004

Chromogenic color prints

Each 34 5/8 x 34 5/8" (88 x 88 cm)

Acquired through the generosity of Jerry I. Speyer and the Contemporary Arts Council of The Museum of Modern Art



479.2007

James Brown is Dead

Mark Bradford

2007

Torn-and-pasted printed paper

47 3/4 x 267" (121.3 x 678.2 cm)

Purchased with funds provided by Kathy and Richard S. Fuld, Jr.



8.2016

Untitled (policeman)

Kerry James Marshall

2015

Acrylic on PVC panel with plexiglass frame

60 x 60" (152.4 x 152.4 cm)

Gift of Mimi Haas in honor of Marie-Josée Kravis



739.2013

Untitled

Laura Owens

2013

Acrylic, Flashe, and oil stick on canvas

137 3/8 x 119 7/8" (348.9 x 304.5 cm)

Enid A. Haupt Fund



1186.2012

Untitled

Monika Sosnowska

2012

Steel and lacquer

78 3/4 x 76 3/4 x 76 3/4" (200 x 194.9 x 194.9 cm)

Gift of the Speyer Family Foundation

Second Floor, 1970-Present

214 Surface Tension



89.2010

Untitled

Christopher Wool

2007

Enamel on linen

9 x 9' (274.3 x 274.3 cm)

Nina and Gordon Bunshaft Bequest Fund

Second Floor, 1970-Present

215 Worlds to Come



727.2018.a-d

Maintainers A

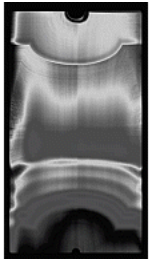
Nairy Baghramian

2018

Pigmented wax over styrofoam, cast aluminum, and painted aluminum clamp with cork

Overall approximately 64 9/16 x 145 11/16 x 90 9/16" (164 x 370 x 230 cm)

Fund for the Twenty-First Century



TR16251

Untitled

Trisha Donnelly

2014

Video (black and white, silent)

35 sec.



3.2016

Duns Scotus

Michaela Eichwald

2015

Acrylic, oil, wax, and lacquer on artificial leather

53 1/2 x 106 1/4" (136 x 270 cm)

Gift of James Keith Brown and Eric Diefenbach; Gift of Morton G. Neumann (by exchange); Gift of Mr. and Mrs. Herbert Freedman (by exchange)



59.2011.x1-x2

Thai

Deana Lawson

2009

Pigmented inkjet print

35 3/4 x 30 3/4" (90.8 x 78.1 cm)

Fund for the Twenty-First Century

Second Floor, 1970-Present

215 Worlds to Come



198.2018

Christ's Entry into Journalism

Kara Walker

2017

Ink and pencil on paper, cut-and-pasted on painted paper

140 1/2 × 196" (356.9 × 497.8 cm)

Acquired through the generosity of Agnes Gund, the Contemporary Arts Council of The Museum of Modern Art, Carol and Morton Rapp, Marnie Pillsbury, the Contemporary Drawing and Print Associates, and Committee on Drawings and Prints Fund



271.2017.a-h

Atopolis: For Édouard Glissant

Jack Whitten

2014

Acrylic on canvas, 8 panels

Overall 124 1/2 × 248 1/2" (316.2 × 631.2 cm)

Acquired through the generosity of Sid R. Bass, Lonti Ebers, Agnes Gund, Henry and Marie-Josée Kravis, Jerry Speyer and Katherine Farley, and Daniel and Brett Sundheim

Second Floor, 1970-Present

216 Building Citizens



61.2015

Wing House, Helsinki, Finland

Asymptote Architecture, New York

2011

Paper, cardboard, acrylic, polystyrene

18 x 18 x 12" (45.7 x 45.7 x 30.5 cm)

Committee on Architecture and Design Funds



157.2012.1

Tour Bois-le-Prêtre, Paris, France

Frédéric Druot

2008

Acrylic, styrene and acrylic primer

20 7/8 x 18 1/2 x 11 13/16" (53 x 47 x 30 cm)

Gift of The Contemporary Arts Council of The Museum of Modern Art



157.2012.2

Tour Bois-le-Prêtre, Paris, France

Frédéric Druot

2008

Acrylic, styrene and acrylic paint

20 7/8 x 18 1/2 x 11 13/16" (53 x 47 x 30 cm)

Gift of The Contemporary Arts Council of The Museum of Modern Art



827.2005

From Hardware to Softform, project

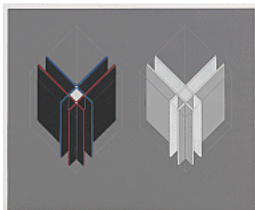
Winka Dubbeldam

2002

Acrylic

13 x 6 x 20" (33 x 15.2 x 50.8 cm)

Barbara Pine Purchase Fund and gift of Frederieke Taylor



2366.2001.1-14

House VI, Cornwall, Connecticut

Peter Eisenman

1972-1975

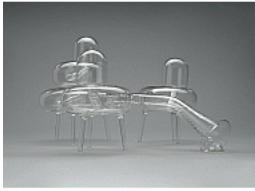
Zipatone with ink on paper

Each: 19 3/4 x 23 7/8" (50.2 x 60.6 cm)

David Childs, Tracy Gardner, Barbara Jakobson, and Jeffrey P. Klein Purchase Funds

Second Floor, 1970-Present

216 Building Citizens



718.2015

Imaginary Architectures: Apartment Complex

El Ultimo Grito

2008–2015

Blown borosilicate glass

16 × 24 × 30" (40.6 × 61 × 76.2 cm)

Gift of the Contemporary Arts Council of The Museum of Modern Art



W22115.1

The Pruitt-Igoe Myth

Chad Freidrichs

2011

Digital cinema (color, sound)

Committee on Architecture and Design Funds



357.1996.1-20

Parc de la Villette project, Paris, France

Zaha Hadid

1982–1983

See individual records.

Each: 16 1/2 × 11 3/4

Gift of the architect in honor of Philip Johnson



717.2014

Casa en el Aire, Mexico City, Mexico

Agustín Hernández Navarro

1991

Wood

26 3/8 × 9 3/16 × 21 1/4" (67 × 23.3 × 54 cm)

Gift of the architect



802.2018.1-57

56 Leonard Street, New York, New York

Herzog & de Meuron, Basel

2006–2008

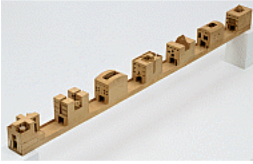
Various materials (acrylic, cardboard, foam, plastic, plexiglass, wood)

Dimensions vary

Gift of the Jacques Herzog and Pierre de Meuron Kabinett

Second Floor, 1970-Present

216 Building Citizens



10.1997

Bridge of Houses Project, Melbourne, Australia

Steven Holl Architects

1979–1982

Wood

4 1/2 x 2 1/2 x 48 7/8" (11.4 x 6.4 x 124.2 cm)

Given anonymously and David Rockefeller, Jr. Purchase Fund



SC154.2010

Flagrant Délit (In the Act)

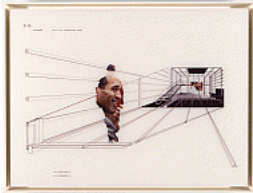
Jean-Pierre Jacquet

1979

35mm film, color, sound

Duration: 10 min.

Gift of the artist



SC1601.2000

Entity as Information Zoom

Gordon Kipping

1995

Digital print on acrylic panel

22 1/8 x 29 3/4" (56.2 x 75.5 cm)

Gift of the architect



58.2018.2

Wall House, Auroville, India

Anupama Kundoo

1997–2000

Digital print on paper

10 5/8 x 24 7/16" (27 x 62 cm)

Fund for the Twenty-First Century



58.2018.3

Wall House, Auroville, India

Anupama Kundoo

1997–2000

Digital print on paper

10 5/8 x 24 7/16" (27 x 62 cm)

Fund for the Twenty-First Century

Second Floor, 1970-Present

216 Building Citizens



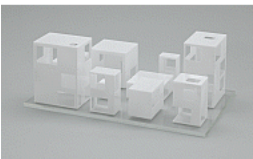
58.2018.4
Wall House, Auroville, India
Anupama Kundoo
1997–2000
Digital print on paper
10 5/8 × 24 7/16" (27 × 62 cm)
Fund for the Twenty-First Century



258.2017
Foldable #1
LOT-EK
2016
Laser-cut cardboard with inkjet print and enamel paint
27 1/2 × 44 1/2" (69.9 × 113 cm)
Gift of Alice Tisch



373.1998
Circus-The Caribbean Orange
Gordon Matta-Clark
1978
Silver dye bleach print
39 1/2 × 29 7/8" (100.3 × 75.9 cm)
Acquired through the generosity of The Junior Associates of The Museum of Modern Art, with contributions from Robert Beyer, Ellen R. Herman, Scott J. Lorinsky, Steven T. Mnuchin and Muffy Perl binder



326.2014
Moriyama House, Tokyo, Japan
Ryue Nishizawa
2002–2005
Acrylic
6 1/2 × 10 3/8 × 17 1/2" (16.5 × 26.4 × 44.5 cm)
Gift of the architect



101.1996
Lemoine House (Maison à Bordeaux), Floirac, Bordeaux, France
OMA (Office for Metropolitan Architecture)
1994–98
Aluminum, plastic, metal, composite board, rock, electric lights and motor
12 7/8 × 52 1/8 × 18 3/16" (32.7 × 132.4 × 46.2 cm)
Gift of Patricia Phelps de Cisneros in honor of Terence Riley

Second Floor, 1970-Present

216 Building Citizens



578.2017

Lützowstrasse Housing, IBA Housing Competition project, Berlin, Germany

OMA (Office for Metropolitan Architecture)

1980

Acrylic and pencil on printed paper

54 3/4 x 30" (139 x 76.2 cm)

Committee on Architecture and Design Funds



328.2014

Cien House, Concepción, Chile

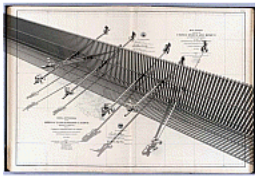
Pezo von Ellrichshausen

2009–2011

Concrete

14 x 14 x 5" (35.6 x 35.6 x 12.7 cm)

Fund for the Twenty-First Century



938.2016

Teeter-Totter Wall

Rael San Fratello

2014

Etching

24 x 30" (61 x 76.2 cm)

Fund for the Twenty-First Century



581.1981

Highrise of Homes, project

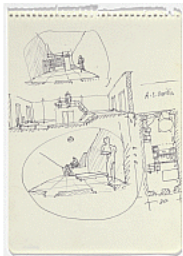
SITE (Sculpture in the Environment)

1981

Ink and charcoal on paper

22 x 24" (55.9 x 61 cm)

Best Products Company Inc. Architecture Fund



848.2012

SAAL S. Victor Social Housing, Porto, Portugal

Álvaro Siza

1974-1977

Ballpoint pen on paper

8 1/4 x 5 7/8" (21 x 15 cm)

Architecture & Design Purchase Fund

Second Floor, 1970-Present

216 Building Citizens



849.2012
SAAL S. *Victor Social Housing, Porto, Portugal*
Álvaro Siza
1974-1977
Ballpoint pen on paper
8 1/4 x 5 7/8" (21 x 15 cm)
Architecture & Design Purchase Fund



851.2012
SAAL S. *Victor Social Housing, Porto, Portugal (recto)*
SAAL *Bouça Social Housing, Porto, Portugal (verso)*
Álvaro Siza
1974-1977
Ballpoint pen on paper
11 11/16 x 8 1/4" (29.7 x 21 cm)
Architecture & Design Purchase Fund



856.2012
SAAL S. *Victor Social Housing, Porto, Portugal*
Álvaro Siza
1974-1977
Ballpoint pen on paper
11 7/16 x 8 1/4" (29 x 21 cm)
Architecture & Design Purchase Fund



857.2012
SAAL S. *Victor Social Housing, Porto, Portugal*
Álvaro Siza
1974-1977
Ballpoint pen and pencil on paper
11 7/16 x 8 1/4" (29 x 21 cm)
Architecture & Design Purchase Fund



859.2012
SAAL S. *Victor Social Housing, Porto, Portugal*
Álvaro Siza
1974-1977
Ballpoint pen on paper
11 7/16 x 8 1/4" (29 x 21 cm)
Architecture & Design Purchase Fund

Second Floor, 1970-Present

216 Building Citizens



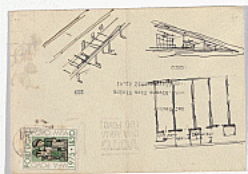
861.2012
SAAL S. Victor Social Housing, Porto, Portugal
Álvaro Siza
1974-1977
Ballpoint pen on paper
11 7/16 x 8 1/4" (29 x 21 cm)
Architecture & Design Purchase Fund



867.2012
SAAL S. Victor Social Housing, Porto, Portugal
Álvaro Siza
1974-1977
Ballpoint pen on paper
4 3/4 x 7 7/8" (12 x 20 cm)
Architecture & Design Purchase Fund



868.2012
SAAL S. Victor Social Housing, Porto, Portugal
Álvaro Siza
1974-1977
Ballpoint pen on paper
5 7/8 x 11" (15 x 28 cm)
Architecture & Design Purchase Fund



869.2012
SAAL S. Victor Social Housing, Porto, Portugal
Álvaro Siza
1974-1977
Ink on paper envelope
4 7/16 x 6 5/16" (11.2 x 16 cm)
Architecture & Design Purchase Fund



870.2012
SAAL S. Victor Social Housing, Porto, Portugal
Álvaro Siza
1974-1977
Pencil on paper
12 x 43 1/8" (30.5 x 109.5 cm)
Architecture & Design Purchase Fund

Second Floor, 1970-Present

216 Building Citizens



871.2012.a-e

SAAL S. *Victor Social Housing, Porto, Portugal*

Álvaro Siza

1974-1977

Ink on paper

Overall: 12 x 37 3/8" (30.5 x 95 cm)

.a: 11 11/16 x 8 1/4" (29.7 x 21 cm)

.b: 11 11/16 x 8 1/4" (29.7 x 21 cm)

.c: 11 11/16 x 5 11/16" (29.7 x 14.5 cm)

.d: 12 x 6 7/8" (30.5 x 17.5 cm)

.e: 11 11/16 x 8 1/4" (29.7 x 21 cm)

Architecture & Design Purchase Fund



872.2012

SAAL S. *Victor Social Housing, Porto, Portugal*

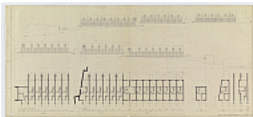
Álvaro Siza

1974-1977

Ink on paper

18 7/8 x 24 13/16" (48 x 63 cm)

Architecture & Design Purchase Fund



873.2012

SAAL S. *Victor Social Housing, Porto, Portugal*

Álvaro Siza

1974-1977

ink on paper

23 5/8 x 51 15/16" (60 x 132 cm)

Architecture & Design Purchase Fund



876.2012

SAAL S. *Victor Social Housing, Porto, Portugal*

Álvaro Siza

1974-1977

Diazotype with ink on paper

11 11/16 x 16 9/16" (29.7 x 42 cm)

Architecture & Design Purchase Fund

Second Floor, 1970-Present

216 Building Citizens



877.2012
SAAL S. *Victor Social Housing, Porto, Portugal*
Álvaro Siza
1974-1977
Diatype print
75 9/16 x 37" (192 x 94 cm)
Architecture & Design Purchase Fund



954.2012
SAAL S. *Victor Social Housing, Porto, Portugal*
Álvaro Siza
1974-1977
Gelatin silver print
4 15/16 x 6 7/8" (12.5 x 17.5 cm)
Architecture & Design Purchase Fund



955.2012
SAAL S. *Victor Social Housing, Porto, Portugal*
Álvaro Siza
1974-1977
Gelatin silver print
3 9/16 x 5 1/8" (9 x 13 cm)
Architecture & Design Purchase Fund



956.2012
SAAL S. *Victor Social Housing, Porto, Portugal*
Álvaro Siza
1974-1977
Gelatin silver print
7 x 9 1/2" (17.8 x 24.1 cm)
Architecture & Design Purchase Fund



957.2012
SAAL S. *Victor Social Housing, Porto, Portugal*
Álvaro Siza
1974-1977
Gelatin silver print
4 15/16 x 6 7/8" (12.5 x 17.5 cm)
Architecture & Design Purchase Fund

Second Floor, 1970-Present

216 Building Citizens



963.2012
SAAL S. Victor Social Housing, Porto, Portugal
Álvaro Siza
1974-1977
Gelatin silver print
4 3/4 x 7 1/16" (12 x 18 cm)
Architecture & Design Purchase Fund



964.2012
SAAL S. Victor Social Housing, Porto, Portugal
Álvaro Siza
1974-1977
Gelatin silver print
9 7/16 x 7 1/16" (24 x 18 cm)
Architecture & Design Purchase Fund



968.2012
SAAL S. Victor Social Housing, Porto, Portugal
Álvaro Siza
1974-1977
Gelatin silver print
4 15/16 x 6 7/8" (12.5 x 17.5 cm)
Architecture & Design Purchase Fund



971.2012
SAAL S. Victor Social Housing, Porto, Portugal
Álvaro Siza
1974-1977
Gelatin silver print
4 1/8 x 5 7/8" (10.5 x 15 cm)
Architecture & Design Purchase Fund



73.2009
Animation background from Flagrant Délit (In the Act)
Madelon Vriesendorp
c. 1979
Gouache on paper
9 1/8 x 11 7/8" (23.2 x 30.2 cm)
Gift of the artist

Second Floor, 1970-Present

216 Building Citizens



74.2009

Character sketch from Flagrant Délit (In the act)

Madelon Vriesendorp

c. 1979

Ink and gouache on paper

15 1/2 x 14" (39.4 x 35.6 cm)

Gift of the artist



846.2011

House

Rachel Whiteread

1992

Ink and correction fluid on graph paper

23 1/4 x 16 1/2" (59.1 x 41.9 cm)

Committee on Drawings Funds



806.2018.1

Harold's Chicken Shack, from the Color(ed) Theory Suite

Amanda Williams

2014-2016

Pigmented inkjet print

22 x 30" (55.9 x 76.2 cm)

Fund for the Twenty-First Century



806.2018.2

Ultrasheen, from the Color(ed) Theory Suite

Amanda Williams

2014-2016

Pigmented inkjet print

22 x 30" (55.9 x 76.2 cm)

Fund for the Twenty-First Century



806.2018.3

Currency Exchange, Safe Passage, from the Color(ed) Theory Suite

Amanda Williams

2014-2016

Pigmented inkjet print

22 x 30" (55.9 x 76.2 cm)

Fund for the Twenty-First Century

Second Floor, 1970-Present

216 Building Citizens



806.2018.4

Flamin' Red Hots, from the Color(ed) Theory Suite

Amanda Williams

2014-2016

Pigmented inkjet print

22 × 30" (55.9 × 76.2 cm)

Fund for the Twenty-First Century



806.2018.5

Pink Oil Moisturizer, from the Color(ed) Theory Suite

Amanda Williams

2014-2016

Pigmented inkjet print

22 × 30" (55.9 × 76.2 cm)

Fund for the Twenty-First Century



806.2018.6

Loose Squares/Newport 100s, from the Color(ed) Theory Suite

Amanda Williams

2014-2016

Pigmented inkjet print

22 × 30" (55.9 × 76.2 cm)

Fund for the Twenty-First Century



806.2018.7

Crown Royal Bag, from the Color(ed) Theory Suite

Amanda Williams

2014-2016

Pigmented inkjet print

22 × 30" (55.9 × 76.2 cm)

Fund for the Twenty-First Century