

### Sophie Taeuber-Arp: Living Abstraction

Kunstmuseum Basel March 19, 2021-June 20, 2021

Tate Modern, London July 13, 2021-October 17, 2021

The Museum of Modern Art, New York November 21, 2021-March 12, 2022  
11w53, On View, 3rd Floor, North Gallery, East

---

#### Gallery 1



SOPHIE TAEUBER-ARP (French, born Switzerland. 1889–1943)  
*Vertical-Horizontal Composition*  
c. 1917  
Wool on canvas  
18 7/8 x 11 5/8" (48 x 29.5 cm)  
Private collection, on long-term loan to the Aargauer Kunsthau, Aarau, Switzerland



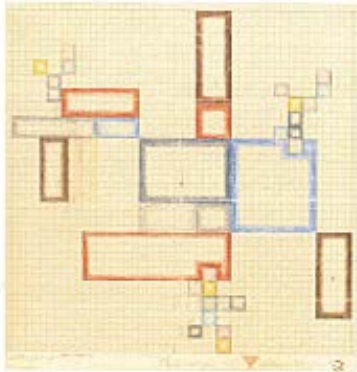
SOPHIE TAEUBER-ARP (French, born Switzerland. 1889–1943)  
*Beaded bag*  
c. 1918  
Glass beads, metal beads, thread, cord, and [fabric]  
6 5/16 x 4 3/4" (16 x 12 cm) flat  
Private collection, on loan to the Kunst Museum Winterthur, Switzerland



SOPHIE TAEUBER-ARP (French, born Switzerland. 1889–1943)  
*Geometric Forms (beaded bag)*  
c. 1918  
Glass beads, thread, cord, and fabric  
6 1/8 x 5 5/16" (15.5 x 13.5 cm) flat  
Museum für Gestaltung, Zürcher Hochschule der Künste, Zurich. Decorative Arts Collection



SOPHIE TAEUBER-ARP (French, born Switzerland. 1889–1943)  
*Geometric Forms (necklace)*  
c. 1918  
Glass beads, metal beads, thread, and cord  
Length: 13 3/16" (33.5 cm) excluding cord, 33 7/16" (85 cm) including cord  
Museum für Gestaltung, Zürcher Hochschule der Künste, Zurich. Decorative Arts Collection



SOPHIE TAEUBER-ARP (French, born Switzerland. 1889–1943)  
*Design for an embroidery*  
c. 1915–23  
Colored pencil and pencil on graph paper  
20 1/4 x 19 5/8" (51.4 x 49.9 cm)  
Private collection, on long-term loan to the Aargauer Kunsthau, Aarau, Switzerland



SOPHIE TAEUBER-ARP (French, born Switzerland. 1889–1943)  
*Vertical-Horizontal Composition*  
1915–16  
Colored pencil and pencil on paper  
9 5/16 x 7 5/8" (23.7 x 19.3 cm)  
Stiftung Arp e.V., Berlin



SOPHIE TAEUBER-ARP (French, born Switzerland. 1889–1943)  
*Vertical-Horizontal Composition on White Ground*  
1915–16  
Gouache and pencil on paper  
11 5/8 x 11 9/16" (29.5 x 29.4 cm)  
Stiftung Arp e.V., Berlin



SOPHIE TAEUBER-ARP (French, born Switzerland. 1889–1943)  
*Vertical-Horizontal Composition on White Ground*  
1915–16  
Gouache and pencil on paper  
11 5/8 × 11" (29.5 × 28 cm)  
Stiftung Arp e.V., Berlin



SOPHIE TAEUBER-ARP (French, born Switzerland. 1889–1943)  
*Cushion panel*  
1916  
Wool on canvas  
20 7/8 × 20 1/2" (53 × 52 cm)  
Museum für Gestaltung, Zürcher Hochschule der Künste, Zurich. Decorative Arts Collection



SOPHIE TAEUBER-ARP (French, born Switzerland. 1889–1943)  
*Dada Cup*  
1916  
Paint on wood  
Height: 8 1/16" (20.4 cm), diam.: 5 7/8" (15 cm)  
Musée d'Art Moderne et Contemporain de Strasbourg, France



SOPHIE TAEUBER-ARP (French, born Switzerland. 1889–1943)  
*Large Triangle: Vertical-Horizontal Composition*  
1916  
Colored pencil and pencil on paper  
7 5/8 × 9 5/16" (19.3 × 23.6 cm)  
Stiftung Arp e.V., Berlin



SOPHIE TAEUBER-ARP (French, born Switzerland. 1889–1943)  
*Vertical-Horizontal Composition*  
1916  
Wool on canvas  
19 11/16 × 15 3/16" (50 × 38.5 cm)  
Fondazione Marguerite Arp, Locarno, Switzerland



SOPHIE TAEUBER-ARP (French, born Switzerland. 1889–1943)  
*Vertical-Horizontal Composition*  
1916  
Colored pencil, gouache, and pencil on paper  
9 7/16 × 7 3/4" (23.9 × 19.6 cm)  
Stiftung Arp e.V., Berlin



SOPHIE TAEUBER-ARP (French, born Switzerland. 1889–1943)  
*Vertical-Horizontal Composition*  
1916  
Colored pencil and pencil on paper  
9 1/16 × 7 1/16" (23 × 18 cm)  
Seroussi Collection, Paris



SOPHIE TAEUBER-ARP (French, born Switzerland. 1889–1943)  
*Abstract Motif (Boats): Vertical-Horizontal Composition*  
1917  
Gouache and pencil on paper  
10 1/4 × 7 7/8" (26 × 20 cm)  
Private collection, Switzerland



SOPHIE TAEUBER-ARP (French, born Switzerland. 1889–1943)  
*Abstract Motif (Knights): Vertical-Horizontal Composition*  
1917  
Gouache and pencil on paper  
13 3/8 × 9 1/2" (33.9 × 24.1 cm)  
Stiftung Arp e.V., Berlin



SOPHIE TAEUBER-ARP (French, born Switzerland. 1889–1943)  
*Amphora*  
1917  
Paint on wood  
Height: 11 13/16" (30 cm), diam.: 6" (15.2 cm)  
Arp Museum Bahnhof Rolandseck, Remagen, Germany



SOPHIE TAEUBER-ARP (French, born Switzerland. 1889–1943)  
*Composition with Abstract Motifs (notebook cover)*  
c. 1917–18  
Glass beads, metal beads, and thread on canvas  
5 1/8 × 5 7/8" (13 × 15 cm)  
Private collection, on long-term loan to the Aargauer Kunsthau, Aarau,  
Switzerland



SOPHIE TAEUBER-ARP (French, born Switzerland. 1889–1943)  
*Diverse Elements in Vertical-Horizontal Composition*  
1917  
Gouache and pencil on paper  
10 1/4 × 8 3/8" (26 × 21.2 cm)  
Collection Mark Kelman, New York



SOPHIE TAEUBER-ARP (French, born Switzerland. 1889–1943)  
*Elementary Forms in Vertical-Horizontal Composition*  
1917  
Gouache and pencil on paper  
12 11/16 × 9 3/4" (32.2 × 24.7 cm)  
Stiftung Arp e.V., Berlin



SOPHIE TAEUBER-ARP (French, born Switzerland. 1889–1943)  
*Elementary Forms: Vertical-Horizontal Composition*  
1917  
Wool on canvas  
15 3/16 × 14 15/16" (38.5 × 38 cm)  
Stiftung Arp e.V., Berlin



SOPHIE TAEUBER-ARP (French, born Switzerland. 1889–1943)  
*Geometric Forms (beaded bag)*  
1917  
Glass beads, metal beads, thread, cord, and fabric  
Height: 8 1/16" (20.5 cm), diam.: 2 3/4" (7 cm)  
Museum für Gestaltung, Zürcher Hochschule der Künste, Zurich. Decorative Arts Collection



SOPHIE TAEUBER-ARP (French, born Switzerland. 1889–1943)  
*Vertical, Horizontal, Square, Rectangular*  
1917  
Gouache, metallic paint, and pencil on paper in historical mat  
8 3/4 × 6 1/4" (22.2 × 15.9 cm)  
The Museum of Modern Art, New York. Acquired through the generosity of Marlene Hess and James D. Zirin, and Gift of Judge and Mrs. Henry Epstein (by exchange)



SOPHIE TAEUBER-ARP (French, born Switzerland. 1889–1943)  
*Beaded bag*  
c. 1918  
Glass beads, metal beads, metal hardware, thread, cord, and fabric  
Height: 6 1/8" (15.5 cm), diam.: 4 15/16" (12.5 cm)  
Private collection, on long-term loan to the Aargauer Kunsthau, Aarau,  
Switzerland



SOPHIE TAEUBER-ARP (French, born Switzerland. 1889–1943)  
*Beadwork (notebook cover or pouch)*  
1918  
Glass beads, thread, and fabric  
3 15/16 × 5 1/8" (10 × 13 cm)  
Bischofberger Collection, Männedorf, Switzerland



SOPHIE TAEUBER-ARP (French, born Switzerland. 1889–1943)  
*Embroidery*  
c. 1918  
[Wool] on canvas in historical frame  
4 3/8 × 3 1/4" (11.1 × 8.3 cm)  
Private collection



SOPHIE TAEUBER-ARP (French, born Switzerland. 1889–1943)  
*Fairytale Portfolio*  
c. 1918–20  
Cut-and-pasted colored paper and fabric on board  
12 3/16 × 9 7/16" (31 × 24 cm)  
Private collection, on long-term loan to the Aargauer Kunsthau, Aarau,  
Switzerland



SOPHIE TAEUBER-ARP (French, born Switzerland. 1889–1943)  
*Geometric Forms (beaded bag)*  
1918  
Glass beads, metal beads, thread, cord, and fabric  
Height: 5 1/8" (13 cm), diam.: 2 3/8" (6 cm)  
Museum für Gestaltung, Zürcher Hochschule der Künste, Zurich. Decorative Arts Collection



SOPHIE TAEUBER-ARP (French, born Switzerland. 1889–1943)  
*Necklace*  
c. 1918–20  
Glass beads, thread, and metal findings  
Length: 15 3/4" (40 cm)  
Private collection, on long-term loan to the Aargauer Kunsthau, Aarau, Switzerland



SOPHIE TAEUBER-ARP (French, born Switzerland. 1889–1943)  
*Necklace*  
c. 1918–20  
Glass beads, thread, cord, and metal findings  
Length: 15 3/8" (39 cm)  
Private collection, on long-term loan to the Aargauer Kunsthau, Aarau, Switzerland



SOPHIE TAEUBER-ARP (French, born Switzerland. 1889–1943)  
*Necklace*  
c. 1918–20  
Glass beads, thread, metal chain, and metal findings  
Length: 13 3/4" (35 cm)  
Private collection, on long-term loan to the Aargauer Kunsthau, Aarau, Switzerland





SOPHIE TAEUBER-ARP (French, born Switzerland. 1889–1943)  
*Necklace*  
c. 1918–20  
Glass beads, thread, and cord  
Length: 14 3/16" (36 cm)  
Private collection, on long-term loan to the Aargauer Kunsthau, Aarau,  
Switzerland



SOPHIE TAEUBER-ARP (French, born Switzerland. 1889–1943)  
*Powder Box*  
c. 1918  
Paint and metallic powder on wood  
Height: 11 3/4" (29.8 cm), diam.: 6 1/2" (16.5 cm)  
Private collection, on long-term loan to the Aargauer Kunsthau, Aarau,  
Switzerland



SOPHIE TAEUBER-ARP (French, born Switzerland. 1889–1943)  
*Rosette (bracelet)*  
c. 1918  
Glass beads and thread  
Diam.: 3 9/16" (9 cm)  
Private collection, on long-term loan to the Aargauer Kunsthau, Aarau,  
Switzerland



SOPHIE TAEUBER-ARP (French, born Switzerland. 1889–1943)  
*Vertical-Horizontal Composition with Reciprocal Triangles (Corresponding to the Triptych)*  
1918  
Gouache and pencil on paper  
12 1/4 × 9 3/16" (31.1 × 23.4 cm)  
Stiftung Arp e.V., Berlin



SOPHIE TAEUBER-ARP (French, born Switzerland. 1889–1943)  
*Free Rhythms*  
1919  
Gouache and pencil on paper  
14 13/16 × 10 13/16" (37.6 × 27.5 cm)  
Kunsthaus Zürich. Department of Prints and Drawings. Gift of Hans Arp



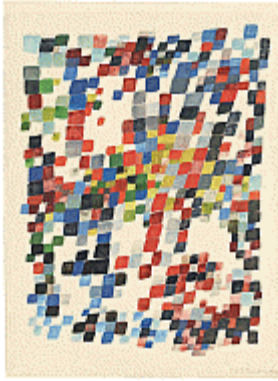
SOPHIE TAEUBER-ARP (French, born Switzerland. 1889–1943)  
*Free Vertical-Horizontal Rhythms, Cut and Pasted on White Ground*  
1919  
Gouache and pencil on paper cut-and-pasted on board  
11 15/16 × 8 7/16" (30.3 × 21.5 cm)  
Stiftung Arp e.V., Berlin



SOPHIE TAEUBER-ARP (French, born Switzerland. 1889–1943)  
*Small Triptych: Free Vertical-Horizontal Rhythms, Cut and Pasted on White Ground*  
1919  
Gouache and pencil on paper cut-and-pasted on board  
8 1/4 × 12 1/2" (21 × 31.8 cm)  
Kunstmuseum Basel. Department of Prints and Drawings. Gift of Marguerite Arp-Hagenbach



SOPHIE TAEUBER-ARP (French, born Switzerland. 1889–1943)  
*Composition of Quadrangular, Polychrome, Dense Strokes*  
1920  
Gouache and pencil on paper  
9 7/16 × 12 1/2" (23.9 × 31.8 cm)  
Stiftung Arp e.V., Berlin



SOPHIE TAEUBER-ARP (French, born Switzerland. 1889–1943)  
*Composition of Quadrangular, Polychrome, Dense Strokes*  
1920  
Gouache and pencil on paper  
14 9/16 x 10 5/8" (37 x 27 cm)  
Private collection, Switzerland



SOPHIE TAEUBER-ARP (French, born Switzerland. 1889–1943)  
*Geometric Forms with Bird (Siena)*  
1920  
Glass beads and thread  
8 7/8 x 7 1/16" (22.5 x 18 cm)  
Private collection, Switzerland



SOPHIE TAEUBER-ARP (French, born Switzerland. 1889–1943)  
*Quadrangular Strokes Evoking and Framing Figures*  
1920  
Gouache and pencil on paper on board  
11 7/16 x 16 5/8" (29 x 42.3 cm)  
Bischofberger Collection, Männedorf, Switzerland



SOPHIE TAEUBER-ARP (French, born Switzerland. 1889–1943)  
*Quadrangular Strokes Evoking Group of Figures*  
1920  
Gouache, metallic paint, and pencil on paper  
15 3/4 x 11 7/16" (40 x 29 cm)  
Private collection, on long-term loan to the Aargauer Kunsthau, Aarau, Switzerland



SOPHIE TAEUBER-ARP (French, born Switzerland. 1889–1943)

*Quadrangular Strokes Evoking Group of Figures*

1920

Gouache and pencil on paper

10 7/16 × 13 3/4" (26.5 × 35 cm)

Seroussi Collection, Paris



Photographer: PHOTOGRAPHER UNKNOWN  
*Sophie Taeuber-Arp's Head (c. 1918; lost)*  
c. 1918  
Gelatin silver print  
4 3/8 × 3 3/16" (11 × 8 cm)  
Fondation Arp, Clamart, France



PHOTO GANZ, ZURICH  
*Sophie Taeuber-Arp's Head (1920)*  
c. 1920  
Gelatin silver print  
6 3/4 × 4 13/16" (17.1 × 12.3 cm)  
Fondation Arp, Clamart, France



Photographer: PHOTO GANZ, ZURICH  
*Sophie Taeuber-Arp's Mister Pearl Antlers (Known Hotel Thief)*  
c. 1920  
Gelatin silver print  
6 11/16 × 4 3/4" (17 × 12.1 cm)  
Fondation Arp, Clamart, France



Photographer: PHOTO GANZ, ZURICH  
*Sophie Taeuber-Arp's Portrait H[ans] A[rp] (1918)*  
c. 1920  
Gelatin silver print  
4 1/16 × 2 9/16" (10.3 × 6.5 cm)  
Fondation Arp, Clamart, France



Photographer: ERNST LINCK (Swiss, 1874–1963)  
*Antechamber of the King (scene from Sophie Taeuber-Arp's King Stag)*  
1918  
Gelatin silver print  
6 3/16 × 7 3/8" (15.7 × 18.7 cm)  
Fondation Arp, Clamart, France



Photographer: ERNST LINCK (Swiss, 1874–1963)  
*Cabinet of the King (scene from Sophie Taeuber-Arp's King Stag)*  
1918  
Gelatin silver print  
5 3/16 x 8 3/8" (13.1 x 21.2 cm)  
Fondation Arp, Clamart, France



Photographer: ERNST LINCK (Swiss, 1874–1963)  
*Final scene from Sophie Taeuber-Arp's King Stag*  
1918  
Gelatin silver print  
6 9/16 x 8 3/4" (16.6 x 22.3 cm)  
Fondation Arp, Clamart, France



Photographer: ERNST LINCK (Swiss, 1874–1963)  
SOPHIE TAEUBER-ARP (French, born Switzerland. 1889–1943)  
*In the Forest (scene from Sophie Taeuber-Arp's King Stag)*  
1918  
Gelatin silver print  
5 1/2 x 8 3/4" (13.9 x 22.3 cm)  
Stiftung Arp e.V., Berlin



Photographer: ERNST LINCK (Swiss, 1874–1963)  
*Sophie Taeuber and Jean (Hans) Arp with her marionettes for King Stag, Zurich*  
1918  
Gelatin silver print  
4 13/16 x 6 5/16" (12.3 x 16 cm)  
Kunsthau Zurich Library



SOPHIE TAEUBER-ARP (French, born Switzerland. 1889–1943)  
*Angela (marionette for King Stag)*  
1918  
Oil and metallic paint on wood; fabric; metal hardware  
19 11/16 x 5 1/2 x 5 7/8" (50 x 14 x 15 cm)  
Museum für Gestaltung, Zürcher Hochschule der Künste, Zurich. Decorative Arts Collection



SOPHIE TAEUBER-ARP (French, born Switzerland. 1889–1943)  
*Bear (marionette for King Stag)*  
1918  
Oil on wood; metal hardware; paper  
13 x 7 1/16 x 4 3/4" (33 x 18 x 12 cm)  
Museum für Gestaltung, Zürcher Hochschule der Künste, Zurich. Decorative Arts Collection



SOPHIE TAEUBER-ARP (French, born Switzerland. 1889–1943)  
*Brighella (marionette for King Stag)*  
1918  
Oil on wood; fabric; glass beads; metal hardware  
14 3/16 x 5 1/8 x 2 5/16" (36 x 13 x 5.8 cm)  
Museum für Gestaltung, Zürcher Hochschule der Künste, Zurich. Decorative Arts Collection



SOPHIE TAEUBER-ARP (French, born Switzerland. 1889–1943)  
*Clarissa (marionette for King Stag)*  
1918  
Oil on wood; fabric; metal hardware  
19 11/16 × 5 1/2 × 5 1/8" (50 × 14 × 13 cm)  
Museum für Gestaltung, Zürcher Hochschule der Künste, Zurich. Decorative Arts Collection



SOPHIE TAEUBER-ARP (French, born Switzerland. 1889–1943)  
*Dada Head*  
1918  
Oil and metallic paint on wood  
Height: 13 3/8" (34 cm), diam.: 7 7/8" (20 cm)  
Musée National d'Art Moderne, Centre Georges Pompidou, Paris



SOPHIE TAEUBER-ARP (French, born Switzerland. 1889–1943)  
*Deramo, The King (marionette for King Stag)*  
1918  
Oil and metallic paint on wood; fabric; brass sheet; bells; metal hardware  
23 1/16 × 5 1/2 × 3 15/16" (58.5 × 14 × 10 cm)  
Museum für Gestaltung, Zürcher Hochschule der Künste, Zurich. Decorative Arts Collection



SOPHIE TAEUBER-ARP (French, born Switzerland. 1889–1943)  
*Design for a stage set for King Stag*  
1918  
Crayon and pencil on tracing paper on board  
3 3/4 × 6 1/2" (9.5 × 16.5 cm)  
Museum für Gestaltung, Zürcher Hochschule der Künste, Zurich. Graphics Collection





SOPHIE TAEUBER-ARP (French, born Switzerland. 1889–1943)  
*Design for a stage set for King Stag*  
1918  
Crayon and pencil on tracing paper on board  
3 5/16 × 5 3/16" (8.4 × 13.2 cm)  
Museum für Gestaltung, Zürcher Hochschule der Künste, Zurich. Graphics Collection



SOPHIE TAEUBER-ARP (French, born Switzerland. 1889–1943)  
*Design for a stage set for King Stag [König Hirsch]*  
1918  
Crayon and pencil on tracing paper on board  
3 3/4 × 6 3/8" (9.6 × 16.2 cm)  
Stiftung Arp e.V., Berlin



SOPHIE TAEUBER-ARP (French, born Switzerland. 1889–1943)  
*Design for a stage set for King Stag [König Hirsch]*  
1918  
Crayon and pencil on tracing paper on board  
3 7/16 × 6 7/16" (8.8 × 16.4 cm)  
Stiftung Arp e.V., Berlin



SOPHIE TAEUBER-ARP (French, born Switzerland. 1889–1943)  
*Dr. Oedipus Complex (marionette for King Stag)*  
1918  
Oil on wood; brass sheet; metal hardware  
14 15/16 × 7 1/2 × 7 1/2" (38 × 19 × 19 cm)  
Museum für Gestaltung, Zürcher Hochschule der Künste, Zurich. Decorative Arts Collection



SOPHIE TAEUBER-ARP (French, born Switzerland. 1889–1943)  
*Freudanalyticus, The Magician (marionette for King Stag)*  
1918  
Oil on wood; brass sheet; metal hardware  
24 × 6 11/16 × 6 11/16" (61 × 17 × 17 cm)  
Museum für Gestaltung, Zürcher Hochschule der Künste, Zurich. Decorative Arts Collection



SOPHIE TAEUBER-ARP (French, born Switzerland. 1889–1943)  
*Guards (marionette for King Stag)*  
1918  
Metallic paint and oil on wood; metal hardware  
Height: 21 7/8" (55.5 cm), diam.: 7 1/16" (18 cm)  
Museum für Gestaltung, Zürcher Hochschule der Künste, Zurich. Decorative Arts Collection



SOPHIE TAEUBER-ARP (French, born Switzerland. 1889–1943)  
*Leander (marionette for King Stag)*  
1918  
Oil on wood; fabric; metal hardware  
20 11/16 × 5 7/8 × 3 15/16" (52.5 × 15 × 10 cm)  
Museum für Gestaltung, Zürcher Hochschule der Künste, Zurich. Decorative Arts Collection



SOPHIE TAEUBER-ARP (French, born Switzerland. 1889–1943)  
*Pantalon (marionette for King Stag)*  
1918  
Oil and metallic paint on wood; fabric; glass beads; metal hardware  
17 5/16 × 7 7/8 × 5 1/2" (44 × 20 × 14 cm)  
Museum für Gestaltung, Zürcher Hochschule der Künste, Zurich. Decorative Arts Collection



SOPHIE TAEUBER-ARP (French, born Switzerland. 1889–1943)  
*Parrot (marionette for King Stag)*  
1918  
Oil on wood; brass sheet; metal hardware  
7 1/2 × 3 9/16 × 11 5/8" (19 × 9 × 29.5 cm)  
Museum für Gestaltung, Zürcher Hochschule der Künste, Zurich. Decorative Arts Collection



SOPHIE TAEUBER-ARP (French, born Switzerland. 1889–1943)  
*Portrait H[ans] A[rp]*  
1918  
Oil on wood  
Height: 9 13/16" (25 cm), diam.: 3 9/16" (9 cm)  
Private collection



SOPHIE TAEUBER-ARP (French, born Switzerland. 1889–1943)  
*Smeraldina (marionette for King Stag)*  
1918  
Oil on wood; fabric; artificial flowers; feathers; metal hardware  
17 5/16 × 5 7/8 × 5 1/8" (44 × 15 × 13 cm)  
Museum für Gestaltung, Zürcher Hochschule der Künste, Zurich. Decorative Arts Collection



SOPHIE TAEUBER-ARP (French, born Switzerland. 1889–1943)  
*Stag (marionette for King Stag)*  
1918  
Oil on wood; brass sheet; metallic paint on metallic paper; metal hardware  
19 11/16 × 7 × 7 1/16" (50 × 17.8 × 18 cm)  
Museum für Gestaltung, Zürcher Hochschule der Künste, Zurich. Decorative Arts Collection



SOPHIE TAEUBER-ARP (French, born Switzerland. 1889–1943)  
*Stag (marionette for King Stag)*  
1918  
Oil on wood; brass sheet; metal hardware  
19 11/16 × 7 × 7 1/16" (50 × 17.8 × 18 cm)  
Museum für Gestaltung, Zürcher Hochschule der Künste, Zurich. Decorative Arts Collection



SOPHIE TAEUBER-ARP (French, born Switzerland. 1889–1943)  
*Statue (marionette for King Stag)*  
1918  
Oil on wood; metal hardware (pedastal reconstructed 1993)  
20 1/16 × 3 3/4 × 2 3/8" (51 × 9.5 × 6 cm)  
Museum für Gestaltung, Zürcher Hochschule der Künste, Zurich. Decorative Arts Collection



SOPHIE TAEUBER-ARP (French, born Switzerland. 1889–1943)  
*Stool (prop for King Stag)*  
1918  
Oil on wood; fabric upholstered cushion  
Height: 5 13/16" (14.8 cm), diam.: 6 5/8" (16.8 cm)  
Museum für Gestaltung, Zürcher Hochschule der Künste, Zurich. Decorative Arts Collection



SOPHIE TAEUBER-ARP (French, born Switzerland. 1889–1943)  
*Tartaglia (marionette for King Stag)*  
1918  
Oil on wood; brass sheet; fabric; glass beads; metal hardware  
19 5/16 × 6 5/16 × 4 5/16" (49 × 16 × 11 cm)  
Museum für Gestaltung, Zürcher Hochschule der Künste, Zurich. Decorative Arts Collection



SOPHIE TAEUBER-ARP (French, born Switzerland. 1889–1943)  
*Tree (prop for King Stag)*  
1918  
Oil on wood; feathers; fabric; wire  
Height: 20 11/16" (52.6 cm), diam.: 6 5/8" (16.8 cm) excluding branches  
Museum für Gestaltung, Zürcher Hochschule der Künste, Zurich. Decorative Arts Collection



SOPHIE TAEUBER-ARP (French, born Switzerland. 1889–1943)  
*Truffaldino, The Bird Catcher (marionette for King Stag)*  
1918  
Oil on wood; feathers; metal hardware  
19 5/16 × 7 7/8 × 5 7/8" (49 × 20 × 15 cm)  
Museum für Gestaltung, Zürcher Hochschule der Künste, Zurich. Decorative Arts Collection



NIC ALUF  
*Sophie Taeuber with her Dada Head (1920)*  
1920  
Gelatin silver print on board  
4 5/8 × 3 3/4" (11.7 × 9.6 cm)  
Stiftung Arp e.V., Berlin



NIC ALUF  
*Sophie Taeuber with her Dada Head (1920)*  
1920  
Gelatin silver print on board  
5 1/16 × 3 7/8" (12.9 × 9.8 cm)  
Stiftung Arp e.V., Berlin



NIC ALUF  
*Sophie Taeuber with her Dada Head (1920)*  
1920  
Gelatin silver print on board  
6 7/16 × 4 1/2" (16.4 × 11.5 cm)  
Bibliothèque Kandinsky, Musée National d'Art Moderne, Centre Georges Pompidou, Paris



Photographer: PHOTO GANZ, ZURICH  
*Sophie Taeuber-Arp's Portrait H[ans] A[rp] (1918) and Head (c. 1918) from behind*  
c. 1920  
Gelatin silver print  
4 5/8 × 3 9/16" (11.7 × 9 cm)  
Fondation Arp, Clamart, France



SOPHIE TAEUBER-ARP (French, born Switzerland. 1889–1943)  
*Dada Head*  
1920  
Oil and metallic paint on wood  
Height: 11 9/16" (29.4 cm), diam.: 5 1/2" (14 cm)  
Musée National d'Art Moderne, Centre Georges Pompidou, Paris



SOPHIE TAEUBER-ARP (French, born Switzerland. 1889–1943)  
*Fresco from the Zurich Dada Pantheon*  
1920  
Oil on canvas on board  
10 5/8 × 13 9/16" (27 × 34.5 cm)  
Musée National d'Art Moderne, Centre Georges Pompidou, Paris



SOPHIE TAEUBER-ARP (French, born Switzerland. 1889–1943)

*Head*

1920

Oil on wood; glass beads; wire

Height: 9 1/4" (23.5 cm)

The Museum of Modern Art, New York. Mrs. John Hay Whitney Bequest (by exchange) and Committee on Painting and Sculpture Funds



SOPHIE TAEUBER-ARP (French, born Switzerland. 1889–1943)

*König Hirsch: Postament für Statue*

1993

Wood, metal, paint

Museum für Gestaltung, Zurich



SOPHIE TAEUBER-ARP (French, born Switzerland. 1889–1943)  
*Embroidery*  
c. 1920  
Wool on canvas  
12 5/8 × 15 3/4" (32 × 40 cm)  
Private collection, on loan to the Fondation Arp, Clamart, France



SOPHIE TAEUBER-ARP (French, born Switzerland. 1889–1943)  
*Composition with Diagonals and a Small Transparent Circle (fragment used for a tapestry [c. 1925])*  
c. 1916–25  
Gouache and pencil on paper on board  
5 1/16 × 4 3/16" (12.8 × 10.7 cm)  
Arp Museum Bahnhof Rolandseck, Remagen, Germany



SOPHIE TAEUBER-ARP (French, born Switzerland. 1889–1943)  
*Composition with Geometric Forms and Light Blue Circle (fragment used for a tapestry [c. 1925])*  
c. 1916–25  
Gouache and pencil on paper on board  
4 × 4 1/2" (10.2 × 11.5 cm)  
Stiftung Arp e.V., Berlin



SOPHIE TAEUBER-ARP (French, born Switzerland. 1889–1943)  
*Composition with Stacked Triangles (fragment used for a tapestry [c. 1925])*  
c. 1916–25  
Gouache and pencil on paper on board  
3 7/16 × 4 9/16" (8.8 × 11.6 cm)  
Arp Museum Bahnhof Rolandseck, Remagen, Germany





SOPHIE TAEUBER-ARP (French, born Switzerland. 1889–1943)  
*Fragment used for a rug (1922)*  
c. 1916–22  
Gouache on paper on board  
1 × 1" (2.5 × 2.6 cm)  
Stiftung Arp e.V., Berlin



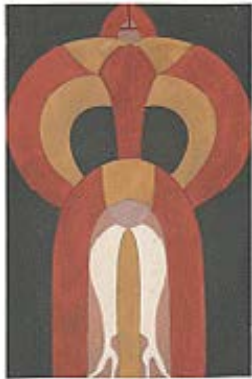
SOPHIE TAEUBER-ARP (French, born Switzerland. 1889–1943)  
*Swans [Schwäne] (fragment used for a tapestry [1924])*  
c. 1916–24  
Gouache and pencil on paper on board  
2 7/16 × 2 7/8" (6.2 × 7.3 cm)  
Stiftung Arp e.V., Berlin



SOPHIE TAEUBER-ARP (French, born Switzerland. 1889–1943)  
*Vertical-Horizontal Composition (fragment used for a tapestry [c. 1925])*  
c. 1916–25  
Gouache on paper on board  
3 9/16 × 1 5/16" (9.1 × 3.3 cm)  
Stiftung Arp e.V., Berlin



SOPHIE TAEUBER-ARP (French, born Switzerland. 1889–1943)  
*Cushion*  
c. 1922  
Wool and [cotton]  
18 7/8 × 18 7/8 × 4 3/4" (48 × 48 × 12 cm)  
Arp Museum Bahnhof Rolandseck, Remagen, Germany



SOPHIE TAEUBER-ARP (French, born Switzerland. 1889–1943)  
*Dancer (fragment used for a tapestry [1924])*  
c. 1917–24  
Gouache and pencil on paper on board  
4 3/4 × 3 1/8" (12 × 8 cm)  
Stiftung Arp e.V., Berlin



SOPHIE TAEUBER-ARP (French, born Switzerland. 1889–1943)  
*Figurine (fragment used for a rug [1922])*  
c. 1917–22  
Gouache and pencil on paper on board  
3 1/8 × 1 1/4" (8 × 3.2 cm)  
Fondazione Marguerite Arp, Locarno, Switzerland



SOPHIE TAEUBER-ARP (French, born Switzerland. 1889–1943)  
*Fragment*  
c. 1922  
Gouache on paper  
1 15/16 × 3/4" (5 × 1.9 cm)  
Private collection, Switzerland



SOPHIE TAEUBER-ARP (French, born Switzerland. 1889–1943)  
*Fragment*  
c. 1922  
Metallic paint on paper  
1 1/2 × 5/8" (3.8 × 1.6 cm)  
Private collection, Switzerland



SOPHIE TAEUBER-ARP (French, born Switzerland. 1889–1943)  
*Fragment*  
c. 1922  
Metallic paint on paper  
1 1/8 × 5/8" (2.8 × 1.6 cm)  
Private collection, Switzerland



SOPHIE TAEUBER-ARP (French, born Switzerland. 1889–1943)  
*Fragment used for a rug (1922)*  
c. 1922  
Gouache on paper  
3 15/16 × 1 7/8" (10 × 4.7 cm)  
Private collection, Switzerland



SOPHIE TAEUBER-ARP (French, born Switzerland. 1889–1943)  
*Fragment used for a rug (1922)*  
c. 1922  
Gouache on paper  
13/16 × 2 1/16" (2.1 × 5.3 cm)  
Private collection, Switzerland



SOPHIE TAEUBER-ARP (French, born Switzerland. 1889–1943)  
*Geometric Forms and Letters (beaded bag)*  
1920  
Glass beads, thread, cord, and fabric  
6 13/16 × 5 1/8" (17.3 × 13 cm) flat  
Stiftung Arp e.V., Berlin

SOPHIE TAEUBER-ARP (French, born Switzerland. 1889–1943)

*Needle-lace strip*

c. 1920

Linen

2 1/2 × 19 1/2" (6.4 × 49.5 cm)

Stiftung Arp e.V., Berlin



SOPHIE TAEUBER-ARP (French, born Switzerland. 1889–1943)

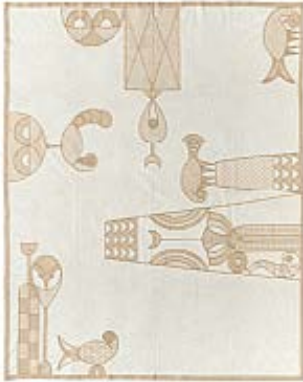
*Geometric Forms, Abstract Motifs (tablecloth)*

1922

Silk on tulle

63 × 51 3/16" (160 × 130 cm)

Museum für Gestaltung, Zürcher Hochschule der Künste, Zurich. Decorative Arts Collection



SOPHIE TAEUBER-ARP (French, born Switzerland. 1889–1943)

*Oval Composition with Abstract Motifs (rug)*

1922

Wool and [cotton]

57 1/16 × 47 1/4" (145 × 120 cm)

Arp Museum Bahnhof Rolandseck, Remagen, Germany



SOPHIE TAEUBER-ARP (French, born Switzerland. 1889–1943)

*Composition (tapestry)*

mid-1920s

Wool

28 3/4 × 46 7/8" (73 × 119 cm) excluding fringes

Arp Museum Bahnhof Rolandseck, Remagen, Germany





SOPHIE TAEUBER-ARP (French, born Switzerland. 1889–1943)  
*Cross on Red Ground (tablecloth)*  
1924  
Wool  
60 1/4 × 36 5/8" (153 × 93 cm)  
Private collection, on long-term loan to the Aargauer Kunsthau, Aarau,  
Switzerland



SOPHIE TAEUBER-ARP (French, born Switzerland. 1889–1943)  
*Tapestry*  
1924  
Wool and cotton  
15 3/4 × 19 11/16" (40 × 50 cm)  
Fondazione Marguerite Arp, Locarno, Switzerland



SOPHIE TAEUBER-ARP (French, born Switzerland. 1889–1943)  
*Tapestry*  
c. 1925  
Textile  
31 1/2 × 27 9/16" (80 × 70 cm)  
Fondazione Marguerite Arp, Locarno, Switzerland



Author: SOPHIE TAEUBER-ARP (French, born Switzerland. 1889–1943)  
Author: BLANCHE GAUCHAT (Swiss)  
Publisher: GEWERBESCHULE DER STADT ZÜRICH  
*Anleitung zum Unterrichts im Zeichnen für textile Berufe*  
1927  
Portfolio containing printed book and 33 printed sheets  
10 1/4 × 8 1/16" (26 × 20.5 cm)  
Collection Maya Furger (daughter of Blanche Gauchat), Küsnacht, Switzerland



SOPHIE TAEUBER-ARP (French, born Switzerland. 1889–1943)

*Collage*

1928

Cut-and-pasted colored paper, pencil, and colored pencil on paper on board  
6 9/16 × 2 7/8" (16.7 × 7.3 cm)

Stiftung Arp e.V., Berlin



SOPHIE TAEUBER-ARP (French, born Switzerland. 1889–1943)

*Collage*

1928

Cut-and-pasted colored paper, pencil, and colored pencil on paper on board  
6 7/16 × 2 13/16" (16.3 × 7.1 cm)

Bündner Kunstmuseum, Chur, Switzerland. Purchase with a contribution from  
the Boner Stiftung für Kunst und Kultur



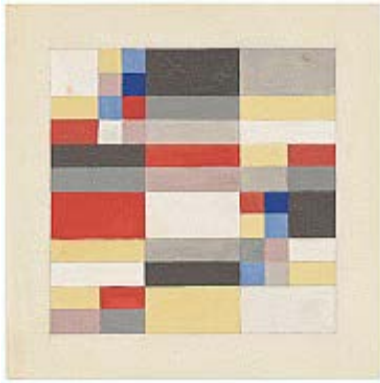
SOPHIE TAEUBER-ARP (French, born Switzerland. 1889–1943)

*Vase Bearer*

1928

Cut-and-pasted colored paper, pencil, and colored pencil on paper [on board]  
6 1/2 × 2 15/16" (16.5 × 7.5 cm)

Fondazione Marguerite Arp, Locarno, Switzerland



SOPHIE TAEUBER-ARP (French, born Switzerland. 1889–1943)  
*Vertical-Horizontal Composition (design for stained glass windows [1928] for the apartment of André Horn, Strasbourg, France)*  
c. 1916–28  
Gouache and pencil on paper  
8 1/4 × 8 1/4" (21 × 21 cm)  
Stiftung Arp e.V., Berlin



SOPHIE TAEUBER-ARP (French, born Switzerland. 1889–1943)  
*Siena, Architecture*  
1921  
Gouache and pencil on paper  
10 3/4 × 8 3/8" (27.3 × 21.2 cm)  
Stiftung Arp e.V., Berlin



SOPHIE TAEUBER-ARP (French, born Switzerland. 1889–1943)  
*Siena, Architecture*  
1921  
Gouache and pencil on paper  
11 3/16 × 8 7/16" (28.4 × 21.4 cm)  
Private collection, on loan to the Fondation Arp, Clamart, France



SOPHIE TAEUBER-ARP (French, born Switzerland. 1889–1943)  
*Strasbourg, France*  
c. 1927  
Gelatin silver print  
3 9/16 × 2 9/16" (9.1 × 6.5 cm)  
Fondation Arp, Clamart, France



SOPHIE TAEUBER-ARP (French, born Switzerland. 1889–1943)  
*Rügen, Germany*  
1923  
Gelatin silver print  
2 1/2 x 1 5/8" (6.4 x 4.2 cm)  
Fondation Arp, Clamart, France



SOPHIE TAEUBER-ARP (French, born Switzerland. 1889–1943)  
*Amalfi, Italy*  
1925  
Gelatin silver print  
2 9/16 x 1 11/16" (6.5 x 4.3 cm)  
Fondation Arp, Clamart, France



SOPHIE TAEUBER-ARP (French, born Switzerland. 1889–1943)  
*Colosseum, Rome, Italy*  
1925  
Gelatin silver print  
2 5/8 x 1 3/4" (6.6 x 4.4 cm)  
Fondation Arp, Clamart, France



SOPHIE TAEUBER-ARP (French, born Switzerland. 1889–1943)  
*Torre dello Scarpariello, Ravello, Amalfi Coast, Italy*  
1925  
Gelatin silver print  
2 9/16 x 1 11/16" (6.5 x 4.3 cm)  
Fondation Arp, Clamart, France





SOPHIE TAEUBER-ARP (French, born Switzerland. 1889–1943)  
*Design for an embroidery (1926)*  
1926  
Gouache, pencil, colored pencil, and wool yarn on graph paper  
16 3/4 x 16 7/8" (42.6 x 42.8 cm)  
Private collection, on long-term loan to the Aargauer Kunsthaus, Aarau,  
Switzerland



SOPHIE TAEUBER-ARP (French, born Switzerland. 1889–1943)  
*Figures*  
1926  
Wool on canvas  
19 5/16 x 18 3/4" (49 x 47.6 cm)  
Stiftung Arp e.V., Berlin



SOPHIE TAEUBER-ARP (French, born Switzerland. 1889–1943)  
*Figures*  
1926  
Gouache, metallic paint, and pencil on paper  
13 13/16 x 10 3/16" (35.1 x 25.9 cm)  
Private collection



SOPHIE TAEUBER-ARP (French, born Switzerland. 1889–1943)  
*Five Extended Figures*  
1926  
Gouache, metallic paint, and pencil on paper  
11 1/2 x 9 1/16" (29.2 x 23 cm)  
Stiftung Arp e.V., Berlin



SOPHIE TAEUBER-ARP (French, born Switzerland. 1889–1943)  
*Paris, Montmartre Cemetery*  
1926  
Gouache and pencil on paper  
12 1/4 × 17 15/16" (31.1 × 45.6 cm)  
Stiftung Arp e.V., Berlin



SOPHIE TAEUBER-ARP (French, born Switzerland. 1889–1943)  
*Paris, Montmartre Cemetery*  
1926  
Gouache and pencil on paper  
9 × 11 9/16" (22.8 × 29.3 cm)  
Galerie Zlotowski, Paris



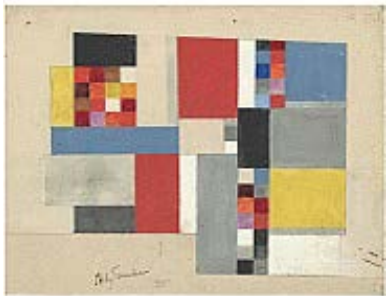
SOPHIE TAEUBER-ARP (French, born Switzerland. 1889–1943)  
*Vertical-Horizontal Composition*  
1926–27  
Gouache and pencil on paper  
17 × 11 1/2" (43.1 × 29.2 cm)  
Stiftung Arp e.V., Berlin



SOPHIE TAEUBER-ARP (French, born Switzerland. 1889–1943)  
*Aubette 127 (axonometric drawing of the "Five O'Clock" tearoom in the Aubette, Strasbourg, France)*  
1927  
Gouache, metallic paint, ink, and pencil on diazotype  
48 7/16 × 39" (123 × 99 cm)  
Musée d'Art Moderne et Contemporain de Strasbourg, France



SOPHIE TAEUBER-ARP (French, born Switzerland. 1889–1943)  
*Aubette 199* (design for a wall of the Aubette Bar in the Aubette, Strasbourg, France)  
 1927  
 Gouache, pencil, ink, and colored ink on diazotype on board  
 8 7/8 × 7 11/16" (22.6 × 19.6 cm)  
 Stiftung Arp e.V., Berlin



SOPHIE TAEUBER-ARP (French, born Switzerland. 1889–1943)  
*Aubette 200* (design for the ceiling of the Aubette Bar in the Aubette, Strasbourg, France)  
 1927  
 Gouache, pencil, and colored ink on paper on board  
 9 5/8 × 12 1/2" (24.4 × 31.8 cm)  
 Stiftung Arp e.V., Berlin



SOPHIE TAEUBER-ARP (French, born Switzerland. 1889–1943)  
*Composition for the Aubette*  
 1927  
 Gouache on cut-and-pasted board and board  
 20 3/8 × 12 13/16 × 3/16" (51.8 × 32.5 × 0.5 cm)  
 Stiftung Arp e.V., Berlin



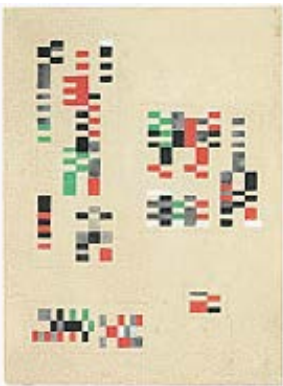
SOPHIE TAEUBER-ARP (French, born Switzerland. 1889–1943)  
 JEAN (HANS) ARP (French, born Germany (Alsace). 1886–1966)  
*Maquette for the stained-glass window in the staircase of the Aubette, Strasbourg, France*  
 1927  
 Stained glass  
 27 3/16 × 17 13/16" (69 × 45.3 cm)  
 Musée d'Art Moderne et Contemporain de Strasbourg, France



SOPHIE TAEUBER-ARP (French, born Switzerland. 1889–1943)  
*Porte d'Arroux, Autun, France*  
c. 1932  
Gelatin silver print  
4 3/8 x 3 5/16" (11.1 x 8.4 cm)  
Fondation Arp, Clamart, France



SOPHIE TAEUBER-ARP (French, born Switzerland. 1889–1943)  
*Sketch for Aubette Composition*  
1927  
Gouache and pencil on paper  
14 1/16 x 10 1/4" (35.8 x 26.1 cm)  
Stiftung Arp e.V., Berlin



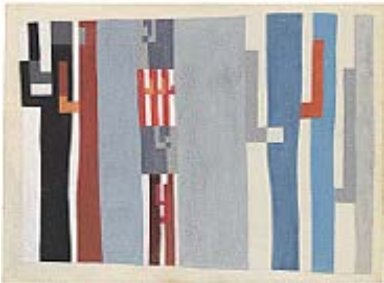
SOPHIE TAEUBER-ARP (French, born Switzerland. 1889–1943)  
*Sketch for Aubette Composition*  
1927  
Gouache and pencil on paper  
13 3/4 x 10 1/4" (35 x 26 cm)  
Private collection, Switzerland



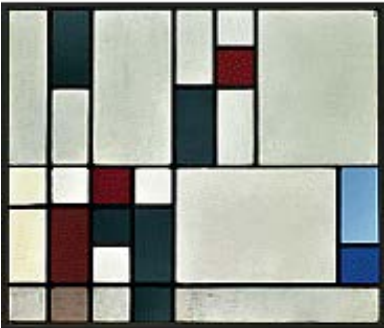
SOPHIE TAEUBER-ARP (French, born Switzerland. 1889–1943)  
*Strasbourg, France*  
1927  
Gelatin silver print  
4 9/16 x 3 7/16" (11.6 x 8.7 cm)  
Fondation Arp, Clamart, France



SOPHIE TAEUBER-ARP (French, born Switzerland. 1889–1943)  
*Aubette Composition*  
 1928  
 Mercerized cotton on canvas  
 21 3/4 × 30 1/2" (55.3 × 77.5 cm)  
 Stiftung Arp e.V., Berlin



SOPHIE TAEUBER-ARP (French, born Switzerland. 1889–1943)  
*Composition with Rectangles and Angular Arms*  
 1928  
 Gouache, metallic paint, and pencil on paper  
 10 7/8 × 14 13/16" (27.6 × 37.6 cm)  
 Stiftung Arp e.V., Berlin



SOPHIE TAEUBER-ARP (French, born Switzerland. 1889–1943)  
*Geometric Composition (stained-glass window, related to part of a window [1928; lost] illustrated on page 13 of the Presentation Album [c. 1930], for the apartment of André Horn, Strasbourg, France)*  
 1928  
 Stained glass  
 28 1/8 × 31 7/8" (71.5 × 81 cm)  
 Musée d'Art Moderne et Contemporain de Strasbourg, France



SOPHIE TAEUBER-ARP (French, born Switzerland. 1889–1943)  
*Geometric Vertical-Horizontal Composition (stained-glass panel for the apartment of André Horn, Strasbourg, France)*  
 1928  
 Stained glass  
 13 3/8 × 42 1/8" (34 × 107 cm)  
 Musée d'Art Moderne et Contemporain de Strasbourg, France



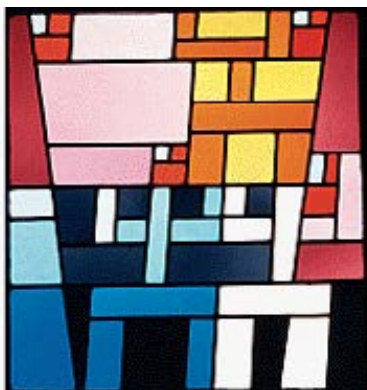
SOPHIE TAEUBER-ARP (French, born Switzerland. 1889–1943)  
*Geometric Vertical-Horizontal Composition (stained-glass panel for the apartment of André Horn, Strasbourg, France)*  
1928  
Stained glass  
13 3/8 x 42 1/8" (34 x 107 cm)  
Musée d'Art Moderne et Contemporain de Strasbourg, France



SOPHIE TAEUBER-ARP (French, born Switzerland. 1889–1943)  
*Geometric Vertical-Horizontal Composition (stained-glass panel for the apartment of André Horn, Strasbourg, France)*  
1928  
Stained glass  
13 3/8 x 42 1/8" (34 x 107 cm)  
Musée d'Art Moderne et Contemporain de Strasbourg, France



SOPHIE TAEUBER-ARP (French, born Switzerland. 1889–1943)  
*Geometric Vertical-Horizontal Composition (stained-glass window for the apartment of André Horn, Strasbourg, France)*  
1928  
Stained glass  
10 13/16 x 42 15/16" (27.5 x 109 cm)  
Musée d'Art Moderne et Contemporain de Strasbourg, France



SOPHIE TAEUBER-ARP (French, born Switzerland. 1889–1943)  
*Off-Center Abstract Composition (stained-glass window for the apartment of André Horn, Strasbourg, France)*  
1928  
Stained glass  
18 1/8 x 17 5/16" (46 x 44 cm)  
Musée d'Art Moderne et Contemporain de Strasbourg, France



SOPHIE TAEUBER-ARP (French, born Switzerland. 1889–1943)  
*Off-Center Composition with White Lines* (design for a stained-glass window [1928] for the apartment of André Horn, Strasbourg, France)  
1928  
Gouache, ink, and pencil on paper  
22 3/16 × 19 5/16" (56.4 × 49.1 cm)  
Stiftung Arp e.V., Berlin



SOPHIE TAEUBER-ARP (French, born Switzerland. 1889–1943)  
*Off-Center Composition with White Lines* (design for a stained-glass window [1928] for the apartment of André Horn, Strasbourg, France)  
1928  
Gouache, ink, and pencil on paper  
22 1/4 × 19 5/16" (56.5 × 49 cm)  
Musée d'Art Moderne et Contemporain de Strasbourg, France



SOPHIE TAEUBER-ARP (French, born Switzerland. 1889–1943)  
*Stained-glass window for the apartment of André Horn, Strasbourg, France*  
1928  
Stained glass  
19 5/16 × 18 11/16" (49 × 47.5 cm)  
Musée des Arts Décoratifs, Les Arts Décoratifs, Paris



SOPHIE TAEUBER-ARP (French, born Switzerland. 1889–1943)  
*Vertical-Horizontal Composition with White Lines* (design for a stained-glass window [1928] for the apartment of André Horn, Strasbourg, France)  
1928  
Gouache, ink, and pencil on paper  
9 3/4 × 25 9/16" (24.8 × 65 cm)  
Musée d'Art Moderne et Contemporain de Strasbourg, France

SOPHIE TAEUBER-ARP (French, born Switzerland. 1889–1943)  
*Vertical-Horizontal Composition with White Lines* (design for a stained-glass window for the apartment of André Horn, Strasbourg, France)  
1928



Gouache, ink, and pencil on paper  
6 1/2 × 23 1/16" (16.5 × 58.5 cm)  
Musée d'Art Moderne et Contemporain de Strasbourg, France



SOPHIE TAEUBER-ARP (French, born Switzerland. 1889–1943)  
*Table des Marchands, Locmariaquer, France*  
1929

Gelatin silver print  
3 1/16 × 1 15/16" (7.7 × 5 cm)  
Fondation Arp, Clamart, France



SOPHIE TAEUBER-ARP (French, born Switzerland. 1889–1943)  
*View of Avignon, Palace of the Popes*  
1931 or 1938

Pencil on paper  
6 11/16 × 8 11/16" (17 × 22 cm)  
Stiftung Arp e.V., Berlin



SOPHIE TAEUBER-ARP (French, born Switzerland. 1889–1943)  
*Cadaqués*  
1932

Gouache and pencil on paper  
13 3/8 × 9 13/16" (34 × 25 cm)  
Fondazione Marguerite Arp, Locarno, Switzerland





SOPHIE TAEUBER-ARP (French, born Switzerland. 1889–1943)  
*Cadaqués, Spain*  
1932  
Gelatin silver print  
4 1/8 x 3 1/8" (10.4 x 8 cm)  
Fondation Arp, Clamart, France



SOPHIE TAEUBER-ARP (French, born Switzerland. 1889–1943)  
*Great View of Cadaqués*  
1932  
Pencil on paper  
10 13/16 x 14 1/2" (27.5 x 36.9 cm)  
Fondazione Marguerite Arp, Locarno, Switzerland



SOPHIE TAEUBER-ARP (French, born Switzerland. 1889–1943)  
*Salvador Dalí's house, Portlligat, Spain*  
1932  
Gelatin silver print  
3 3/16 x 4 1/4" (8.1 x 10.8 cm)  
Fondation Arp, Clamart, France



SOPHIE TAEUBER-ARP (French, born Switzerland. 1889–1943)  
*Tour de Constance, Aigues-Mortes, France*  
c. 1938  
Gelatin silver print  
1 15/16 x 3 1/8" (5 x 8 cm)  
Fondation Arp, Clamart, France



SOPHIE TAEUBER-ARP (French, born Switzerland. 1889–1943)  
*Saint-Cast-le-Guildo, France*  
August 1939  
Gelatin silver print  
4 3/8 × 3 3/8" (11.1 × 8.5 cm)  
Fondation Arp, Clamart, France



SOPHIE TAEUBER-ARP (French, born Switzerland. 1889–1943)  
*Blue modular shelf with feet for the Arps' studio-house in Clamart, France*  
c. 1929  
Painted wood  
19 11/16 × 51 3/16 × 9 3/16" (50 × 130 × 23.3 cm)  
Fondation Arp, Clamart, France



SOPHIE TAEUBER-ARP (French, born Switzerland. 1889–1943)  
*Dark gray modular shelf without feet for the Arps' studio-house in Clamart, France*  
c. 1929  
Painted wood  
13 3/8 × 51 3/16 × 9 3/16" (34 × 130 × 23.3 cm)  
Fondation Arp, Clamart, France



SOPHIE TAEUBER-ARP (French, born Switzerland. 1889–1943)  
*Modular cabinet for storing drawings for the Arps' studio-house in Clamart, France*  
c. 1929  
Painted wood  
25 3/16 × 23 1/4 × 23 1/4" (64 × 59 × 59 cm)  
Fondation Arp, Clamart, France



SOPHIE TAEUBER-ARP (French, born Switzerland. 1889–1943)  
*Modular cabinet with drawers for the Arps' studio-house in Clamart, France*  
c. 1929  
Painted wood  
25 9/16 × 24 13/16 × 20 7/8" (65 × 63 × 53 cm)  
Fondation Arp, Clamart, France



SOPHIE TAEUBER-ARP (French, born Switzerland. 1889–1943)  
*Yellow modular shelf without feet for the Arps' studio-house in Clamart, France*  
c. 1929  
Painted wood  
13 3/8 × 51 3/16 × 9 3/16" (34 × 130 × 23.3 cm)  
Fondation Arp, Clamart, France



SOPHIE TAEUBER-ARP (French, born Switzerland. 1889–1943)  
*Presentation Album*  
c. 1930  
Album of 52 gelatin silver prints  
closed: 11 x 14 15/16 x 1 15/16" (28 x 38 x 5 cm)  
Stiftung Arp e.V., Berlin



SOPHIE TAEUBER-ARP (French, born Switzerland. 1889–1943)  
*Visiting card*  
c. 1930  
3 1/8 x 4 3/4" (8 x 12 cm)  
Fondation Arp, Clamart, France



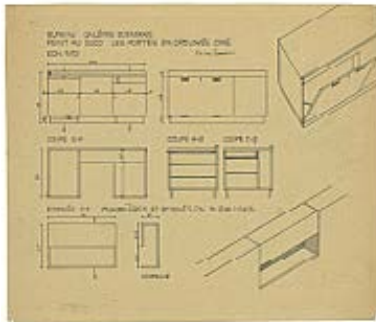
Photographer: SOPHIE TAEUBER-ARP ? (French, born Switzerland. 1889–1943)  
*Clockwise from left: Mary Arp, Jean (Hans) Arp, François Arp, Georges Boulanger, and Ruth Arp in the garden (designed by Sophie Taeuber-Arp) of the Arps' studio-house in Clamart, France.*  
c. 1933–34  
Gelatin silver print  
2 1/16 × 3 3/16" (5.3 × 8.1 cm)  
Fondation Arp, Clamart, France



Photographer: SOPHIE TAEUBER-ARP ? (French, born Switzerland. 1889–1943)  
*Clockwise from left: Mary Arp, Ruth Arp, Jean (Hans) Arp, François Arp, and Georges Boulanger in the garden (designed by Sophie Taeuber-Arp) of the Arps' studio-house in Clamart, France*  
 c. 1933–34  
 Gelatin silver print  
 2 1/16 × 3 1/4" (5.2 × 8.2 cm)  
 Fondation Arp, Clamart, France



SOPHIE TAEUBER-ARP (French, born Switzerland. 1889–1943)  
*Axonometric drawing of the interior of the Galerie Goemans, Paris*  
 1929  
 Ink and pencil on tracing paper  
 19 7/8 × 20 5/16" (50.5 × 51.6 cm)  
 Stiftung Arp e.V., Berlin



SOPHIE TAEUBER-ARP (French, born Switzerland. 1889–1943)  
*Design for the desk in the Galerie Goemans, Paris*  
 1929  
 Ink and pencil on tracing paper  
 18 7/16 × 21 9/16" (46.8 × 54.7 cm)  
 Stiftung Arp e.V., Berlin



SOPHIE TAEUBER-ARP (French, born Switzerland. 1889–1943)  
*Desk for the office in the apartment of Ernest Rott, Paris*  
 1929  
 Painted wood; metal  
 29 15/16 × 51 15/16 × 31 1/2" (76 × 132 × 80 cm)  
 Musée d'Art Moderne et Contemporain de Strasbourg, France



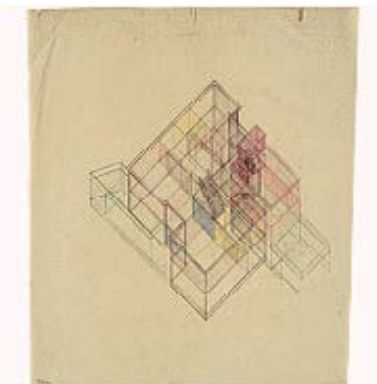
Photographer: SOPHIE TAEUBER-ARP ? (French, born Switzerland. 1889–1943)  
*The Arps' studio-house designed by Sophie Taeuber-Arp in Clamart, France*  
1929  
Gelatin silver print  
3 × 1 15/16" (7.6 × 5 cm)  
Fondation Arp, Clamart, France



Photographer: SOPHIE TAEUBER-ARP ? (French, born Switzerland. 1889–1943)  
*The Arps' studio-house designed by Sophie Taeuber-Arp in Clamart, France*  
1929  
Gelatin silver print  
3 1/16 × 2" (7.7 × 5.1 cm)  
Fondation Arp, Clamart, France



Photographer: SOPHIE TAEUBER-ARP ? (French, born Switzerland. 1889–1943)  
*The Arps' studio-house designed by Sophie Taeuber-Arp in Clamart, France*  
1929  
Gelatin silver print  
2 1/4 × 3 1/16" (5.7 × 7.7 cm)  
Fondation Arp, Clamart, France



SOPHIE TAEUBER-ARP (French, born Switzerland. 1889–1943)  
*Axonometric drawing of the house of Annie and Oskar Müller-Widmann, Basel (unrealized)*  
1932  
Colored pencil and pencil on paper  
17 1/2 × 15 3/8" (44.5 × 39 cm)  
Fondation Arp, Clamart, France



SOPHIE TAEUBER-ARP (French, born Switzerland. 1889–1943)  
*Axonometric drawing of the house of Annie and Oskar Müller-Widmann, Basel (unrealized)*  
1932  
Colored pencil and pencil on tracing paper  
15 15/16 × 11 7/16" (40.5 × 29 cm)  
Fondation Arp, Clamart, France



SOPHIE TAEUBER-ARP (French, born Switzerland. 1889–1943)  
*Axonometric drawing of a bedroom in the house of Ingeborg and Wilhelm Bitter, Berlin*  
1935  
Colored pencil and pencil on paper  
22 × 17 3/4" (55.8 × 45.1 cm)  
Stiftung Arp e.V., Berlin



SOPHIE TAEUBER-ARP (French, born Switzerland. 1889–1943)  
*Axonometric drawing of the kitchen in the house of Ingeborg and Wilhelm Bitter, Berlin*  
1935  
Colored pencil and pencil on paper  
19 15/16 × 17 13/16" (50.7 × 45.3 cm)  
Stiftung Arp e.V., Berlin



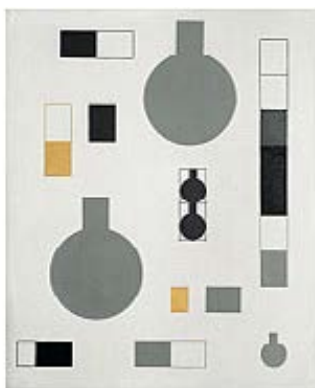
SOPHIE TAEUBER-ARP (French, born Switzerland. 1889–1943)  
*Café*  
1928  
Oil, metallic flakes, metallic powder, and pencil on canvas  
21 3/8 × 28 7/8" (54.3 × 73.3 cm)  
Stiftung Arp e.V., Berlin



SOPHIE TAEUBER-ARP (French, born Switzerland. 1889–1943)  
*Figures*  
1928  
Oil on canvas  
19 11/16 × 25 9/16" (50 × 65 cm)  
Private collection

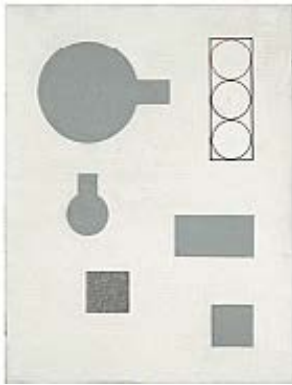


SOPHIE TAEUBER-ARP (French, born Switzerland. 1889–1943)  
*Composition*  
1930  
Oil and metallic flakes on canvas  
19 1/2 × 25 1/4" (49.5 × 64.1 cm)  
The Museum of Modern Art, New York. The Riklis Collection of McCrory Corporation

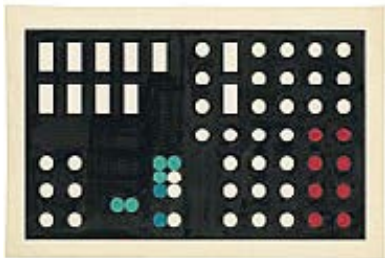


SOPHIE TAEUBER-ARP (French, born Switzerland. 1889–1943)  
*Composition with Circles-with-Arms and Rectangles*  
1930  
Oil and metallic paint on canvas  
25 3/16 × 20 7/8" (64 × 53 cm)  
Musée National d'Art Moderne, Centre Georges Pompidou, Paris

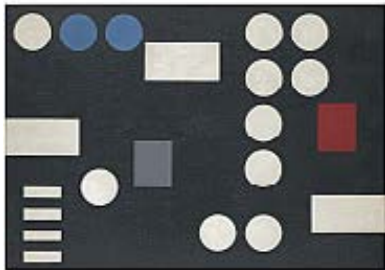




SOPHIE TAEUBER-ARP (French, born Switzerland. 1889–1943)  
*Composition with Rectangles and Circles*  
1930  
Oil, metallic flakes, and pencil on canvas  
12 13/16 × 9 15/16" (32.6 × 25.2 cm)  
Kunstmuseum Basel. Gift of Marguerite Arp-Hagenbach



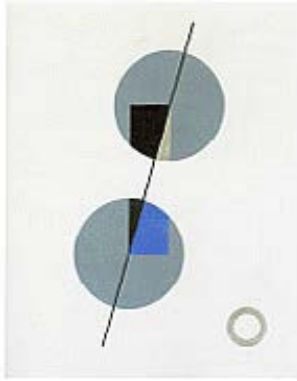
SOPHIE TAEUBER-ARP (French, born Switzerland. 1889–1943)  
*Schematic Composition with Multiple Circles and Rectangles on Black Ground*  
1930  
Ink and gouache on paper  
14 3/16 × 21 1/8" (36.1 × 53.7 cm)  
Stiftung Arp e.V., Berlin



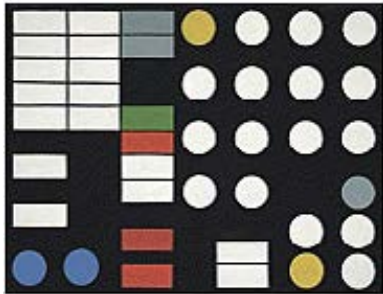
SOPHIE TAEUBER-ARP (French, born Switzerland. 1889–1943)  
*Circle Picture*  
1931  
Oil on canvas  
25 3/8 × 36 1/4" (64.5 × 92 cm)  
Kunstmuseum Basel. Gift of Marguerite Arp-Hagenbach



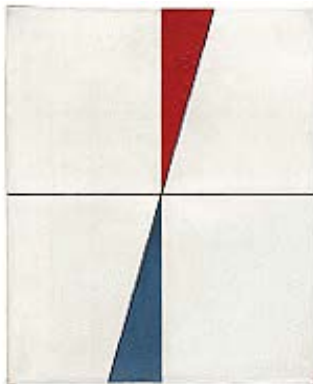
SOPHIE TAEUBER-ARP (French, born Switzerland. 1889–1943)  
*Composition*  
1931  
Oil on canvas  
18 1/8 × 21 5/8" (46 × 55 cm)  
Muzeum Sztuki, Lodz, Poland



SOPHIE TAEUBER-ARP (French, born Switzerland. 1889–1943)  
*Composition (Two Disks Cut by a Line)*  
 1931  
 Oil and metallic paint on canvas  
 12 5/8 × 10 1/16" (32 × 25.5 cm)  
 Aargauer Kunsthau, Aarau, Switzerland. Gift of the Müller-Widmann  
 Collection, Basel



SOPHIE TAEUBER-ARP (French, born Switzerland. 1889–1943)  
*Composition with 22 Rectangles and 21 Circles*  
 1931  
 Gouache on paper  
 10 7/16 × 13 9/16" (26.5 × 34.5 cm)  
 Private collection, Basel



SOPHIE TAEUBER-ARP (French, born Switzerland. 1889–1943)  
*Two Triangles*  
 1931  
 Oil on canvas  
 25 1/2 × 21 1/4" (64.8 × 54 cm)  
 Philadelphia Museum of Art. A. E. Gallatin Collection



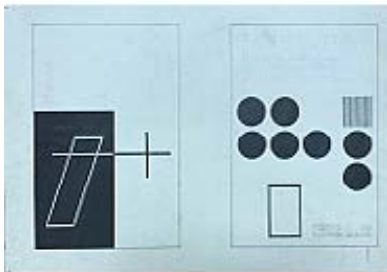
SOPHIE TAEUBER-ARP (French, born Switzerland. 1889–1943)  
*Vertical Composition*  
 1931  
 Oil and pencil on board  
 14 15/16 × 18 1/8" (38 × 46 cm)  
 Arp Museum Bahnhof Rolandseck, Remagen, Germany



SOPHIE TAEUBER-ARP (French, born Switzerland. 1889–1943)  
*Broken Cross*  
1932  
Oil on wood  
15 3/8 × 15 3/8" (39 × 39 cm)  
Private collection



SOPHIE TAEUBER-ARP (French, born Switzerland. 1889–1943)  
*Broken Cross between Diagonals*  
1932  
Gouache on paper  
11 5/8 × 10 1/16" (29.5 × 25.5 cm)  
Private collection, Basel



SOPHIE TAEUBER-ARP (French, born Switzerland. 1889–1943)  
*Design for the front and back cover of the journal Transition: An International Workshop for Orphic Creation, no. 22 (February 1933).*  
c. 1932–33  
Ink and pencil on paper  
10 15/16 × 15 11/16" (27.8 × 39.8 cm)  
Stiftung Arp e.V., Berlin



SOPHIE TAEUBER-ARP (French, born Switzerland. 1889–1943)  
*Equilibrium*  
1932  
Oil on canvas  
16 7/16 × 13 3/16" (41.7 × 33.5 cm)  
Stiftung Arp e.V., Berlin



SOPHIE TAEUBER-ARP (French, born Switzerland. 1889–1943)  
*Four Spaces with Broken Cross*  
 1932  
 Oil on canvas  
 29 5/16 × 25 3/8" (74.5 × 64.5 cm)  
 Musée National d'Art Moderne, Centre Georges Pompidou, Paris



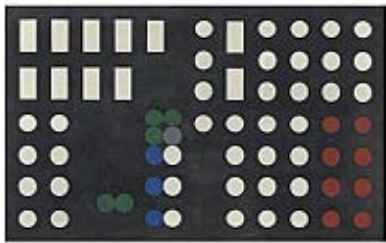
SOPHIE TAEUBER-ARP (French, born Switzerland. 1889–1943)  
*Six Spaces with Four Small Crosses*  
 1932  
 Oil and pencil on canvas  
 25 9/16 × 39 3/8" (65 × 100 cm)  
 Kunstmuseum Bern. Gift of Marguerite Arp-Hagenbach



Editor: EUGÈNE JOLAS  
 Designer: SOPHIE TAEUBER-ARP (French, born Switzerland. 1889–1943)  
*Transition: An International Workshop for Orphic Creation, no. 22*  
 February 1933  
 Printed journal  
 9 × 6 1/8" (22.9 × 15.6 cm)  
 The Museum of Modern Art Library, New York



Editor: EUGÈNE JOLAS  
 Designer: SOPHIE TAEUBER-ARP (French, born Switzerland. 1889–1943)  
*Transition: An International Workshop for Orphic Creation, no. 22*  
 February 1933  
 Printed journal  
 9 × 6 1/8" (22.9 × 15.6 cm)  
 The Morgan Library & Museum, New York. Bequest of Gordon N. Ray



SOPHIE TAEUBER-ARP (French, born Switzerland. 1889–1943)  
*Circle Picture*  
 1933  
 Oil on canvas  
 29 1/4 × 47 3/16" (74.3 × 119.8 cm)  
 Kunstmuseum Bern. Gift of Marguerite Arp-Hagenbach



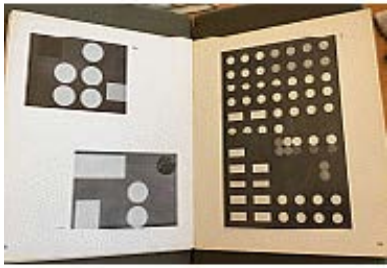
SOPHIE TAEUBER-ARP (French, born Switzerland. 1889–1943)  
*Composition with Rectangles, Squares, and Square Formed by Circles*  
 1933  
 Gouache and pencil on paper  
 12 5/8 × 12 5/8" (32 × 32 cm)  
 Private collection, Switzerland



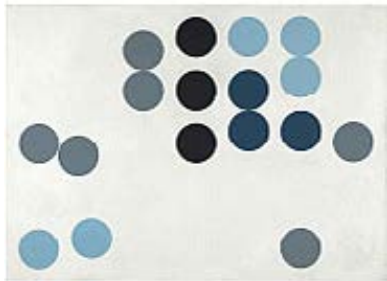
SOPHIE TAEUBER-ARP (French, born Switzerland. 1889–1943)  
*Three Circle Pictures (Triptych)*  
 1933  
 Oil on canvas  
 Three panels, each: 19 11/16 × 19 11/16" (50 × 50 cm)  
 Private collection. Courtesy Hauser & Wirth Collection Services, Zurich



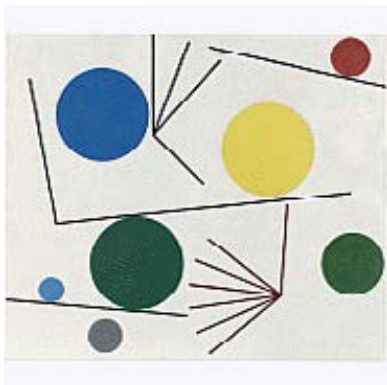
Author: ANATOLE JAKOVSKI (French, 1907–1983)  
 Designer: SOPHIE TAEUBER-ARP (French, born Switzerland. 1889–1943)  
 Publisher: EDITION ABSTRACTION CRÉATION (1931–1936)  
*H. Erni, H. Schiess, K. Seligmann, S. H. Taeuber-Arp, G. Vulliamy*  
 1934  
 Printed book  
 11 7/16 × 8 7/8" (29 × 22.5 cm)  
 The Museum of Modern Art Library, New York



Author: ANATOLE JAKOVSKI (French, 1907–1983)  
Designer: SOPHIE TAEUBER-ARP (French, born Switzerland. 1889–1943)  
Publisher: EDITION ABSTRACTION CRÉATION (1931–1936)  
*H. Erni, H. Schiess, K. Seligmann, S. H. Taeuber-Arp, G. Vulliamy*  
1934  
Printed book  
11 7/16 × 8 7/8" (29 × 22.5 cm)  
Beinecke Rare Book & Manuscript Library, Yale University Library, New Haven, Conn.



SOPHIE TAEUBER-ARP (French, born Switzerland. 1889–1943)  
*Animated Circle Picture*  
1934  
Oil on canvas  
28 9/16 × 39 3/8" (72.5 × 100 cm)  
Kunstmuseum Basel. Gift of Marguerite Arp-Hagenbach



SOPHIE TAEUBER-ARP (French, born Switzerland. 1889–1943)  
*Circles and Bars*  
1934  
Oil and pencil on canvas  
25 3/16 × 29 1/8" (64 × 74 cm)  
Aargauer Kunsthau, Aarau, Switzerland. Anonymous gift



SOPHIE TAEUBER-ARP (French, born Switzerland. 1889–1943)  
*Equilibrium*  
1934  
Oil on canvas  
39 5/16 × 28 7/8" (99.8 × 73.3 cm)  
Kunstmuseum Basel. Gift of Hans Arp



SOPHIE TAEUBER-ARP (French, born Switzerland. 1889–1943)

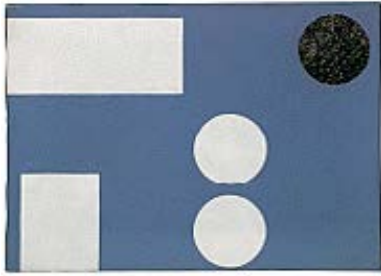
*Wood Relief*

1937

Oil on plywood

Diam.: 23 1/2" (59.7 cm), depth: 2 3/8" (6.1 cm)

Stiftung Arp e.V., Berlin



SOPHIE TAEUBER-ARP (French, born Switzerland. 1889–1943)  
*Composition with Three Circles and Two Rectangles*  
1931  
Oil and metallic flakes on canvas  
9 7/16 × 13" (24 × 33.1 cm)  
Stiftung Arp e.V., Berlin



SOPHIE TAEUBER-ARP (French, born Switzerland. 1889–1943)  
*Off-Center Gradation*  
1934  
Gouache and pencil on paper  
13 7/8 x 10 5/8" (35.2 x 27 cm)  
The Museum of Modern Art, New York. The Riklis Collection of McCrory Corporation



SOPHIE TAEUBER-ARP (French, born Switzerland. 1889–1943)  
*Gradation*  
1934  
Oil on canvas  
25 9/16 × 19 11/16" (65 × 50 cm)  
Private collection



SOPHIE TAEUBER-ARP (French, born Switzerland. 1889–1943)  
*Blue Form, alternatively titled Vase*  
1935  
Gouache and pencil on paper  
12 9/16 × 10 3/16" (31.9 × 25.8 cm)  
Stiftung Arp e.V., Berlin





SOPHIE TAEUBER-ARP (French, born Switzerland. 1889–1943)  
*Composition*  
1935  
Oil on canvas  
19 11/16 × 25 9/16" (50 × 65 cm)  
Hamburger Kunsthalle, Hamburg, Germany



SOPHIE TAEUBER-ARP (French, born Switzerland. 1889–1943)  
*Planes Outlined in Curves*  
1935  
Oil on canvas  
21 7/8 × 18 1/8" (55.5 × 46 cm)  
Kunst Museum Winterthur, Switzerland. Purchase



SOPHIE TAEUBER-ARP (French, born Switzerland. 1889–1943)  
*Planes Outlined in Curves and Plane*  
1935  
Gouache and pencil on paper  
13 3/4 × 10 3/16" (35 × 25.9 cm)  
Kunstmuseum Bern. Gift of Marguerite Arp-Hagenbach



SOPHIE TAEUBER-ARP (French, born Switzerland. 1889–1943)  
*Planes Outlined in Curves and Planes*  
1935  
Gouache on paper  
13 3/4 × 10 3/16" (34.9 × 25.8 cm)  
Kunstmuseum St. Gallen, Switzerland. Gift of Marguerite Arp-Hagenbach



SOPHIE TAEUBER-ARP (French, born Switzerland. 1889–1943)  
*Yellow Form*  
1935  
Oil on canvas  
23 5/8 × 21 5/8" (60 × 55 cm)  
Kunstmuseum St. Gallen, Switzerland. Gift of Marguerite Arp-Hagenbach



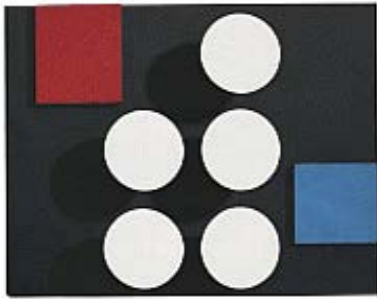
SOPHIE TAEUBER-ARP (French, born Switzerland. 1889–1943)  
*Head*  
1936  
Gouache and pencil on paper  
10 5/8 × 9 13/16" (27 × 24.9 cm)  
Private collection



SOPHIE TAEUBER-ARP (French, born Switzerland. 1889–1943)  
*Relief*  
1936  
Oil on wood and plywood  
19 11/16 × 26 15/16 × 3 1/8" (50 × 68.5 × 8 cm)  
Kunstmuseum Basel. Gift of Marguerite Arp-Hagenbach



SOPHIE TAEUBER-ARP (French, born Switzerland. 1889–1943)  
*Relief*  
1936  
Oil on wood and plywood  
21 5/8 × 25 9/16 × 6 3/8" (55 × 65 × 16.2 cm)  
Emanuel Hoffmann Foundation, Basel. Gift of the founder Maja Sacher-Stehlin, on permanent loan to the Öffentliche Kunstsammlung Basel



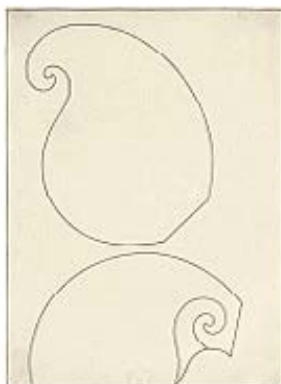
SOPHIE TAEUBER-ARP (French, born Switzerland. 1889–1943)  
*Relief (Project 1931)*  
1936  
Oil on wood and plywood  
14 15/16 × 18 7/8 × 4 5/16" (38 × 48 × 11 cm)  
Aargauer Kunsthau, Aarau, Switzerland. Gift of the Friends of the Aargau Art Collection



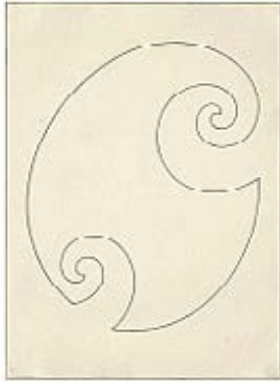
SOPHIE TAEUBER-ARP (French, born Switzerland. 1889–1943)  
*Drawing ("Shells")*  
1937  
Colored pencil on paper  
12 11/16 × 9 7/16" (32.2 × 24 cm)  
Stiftung Arp e.V., Berlin



SOPHIE TAEUBER-ARP (French, born Switzerland. 1889–1943)  
*Drawing ("Umbrellas")* (used as an illustration for the pamphlet for the exhibition *Jean Arp Sculptures Reliefs*  
*Torn Papers/Sophie Taeuber-Arp Paintings Reliefs Gouaches, Galerie Jeanne Bucher, Paris, May 2–16, 1939*)  
1937  
Colored pencil on paper on board  
12 11/16 × 9 1/4" (32.2 × 23.5 cm)  
Stiftung Arp e.V., Berlin



SOPHIE TAEUBER-ARP (French, born Switzerland. 1889–1943)  
*Drawing* (used as an illustration for *Jean [Hans] Arp's 1939 book of poetry Shells and Umbrellas*)  
1937  
Colored pencil on paper  
12 5/8 × 9 7/16" (32.1 × 24 cm)  
Private collection



SOPHIE TAEUBER-ARP (French, born Switzerland. 1889–1943)  
*Drawing (used as an illustration for Jean [Hans] Arp's 1939 book of poetry Shells and Umbrellas)*  
1937  
Colored pencil on paper  
12 5/8 x 9 7/16" (32.1 x 24 cm)  
Private collection



SOPHIE TAEUBER-ARP (French, born Switzerland. 1889–1943)  
*Head*  
1937  
Wood  
Height: 15 5/16" (38.9 cm), diam.: 7 3/4" (19.7 cm)  
Yale University Art Gallery, New Haven, Conn. Gift of Jean Arp in memory of Sophie Taeuber-Arp



JEAN (HANS) ARP (French, born Germany (Alsace). 1886–1966)  
SOPHIE TAEUBER-ARP (French, born Switzerland. 1889–1943)  
Publisher: GALERIE JEANNE BUCHER, PARIS  
*Pamphlet for the exhibition Jean Arp Sculptures Reliefs Torn Papers/Sophie Taeuber-Arp Paintings Reliefs Gouaches, Galerie Jeanne Bucher, Paris, May 2–16, 1939*  
1939  
5 9/16 x 4 3/16" (14.2 x 10.7 cm)  
Fondazione Marguerite Arp, Locarno, Switzerland



SOPHIE TAEUBER-ARP (French, born Switzerland. 1889–1943)  
*Colored Gradation*  
1939  
Oil on canvas  
25 1/2 x 19 11/16" (64.8 x 50 cm)  
Kunstmuseum Bern. Gift of Marguerite Arp-Hagenbach



SOPHIE TAEUBER-ARP (French, born Switzerland. 1889–1943)  
Author: JEAN (HANS) ARP (French, born Germany (Alsace). 1886–1966)  
Printer: UNKNOWN , Czechoslovakia  
*Muscheln und Schirme (Shells and Umbrellas)*  
1939  
Illustrated book with four line block reproductions  
page (each): 8 15/16 × 5 11/16" (22.7 × 14.4 cm); overall (closed): 9 1/8 × 6  
3/16 × 3/16" (23.1 × 15.7 × 0.5 cm)  
The Museum of Modern Art, New York. The Abby Aldrich Rockefeller  
Endowment for Prints



SOPHIE TAEUBER-ARP (French, born Switzerland. 1889–1943)  
*Drawing for a polychrome round relief (related to Wood Relief [1937])*  
c. 1936  
Colored pencil and pencil on paper  
13 1/2 x 10 5/16" (34.3 x 26.2 cm)  
Stiftung Arp e.V., Berlin



SOPHIE TAEUBER-ARP (French, born Switzerland. 1889–1943)  
*Animated Circle Picture*  
1935  
Oil on canvas  
19 7/8 x 25 5/8" (50.5 x 65.1 cm)  
Albright-Knox Art Gallery, Buffalo, N.Y. Charles Clifton Fund



SOPHIE TAEUBER-ARP (French, born Switzerland. 1889–1943)  
*Composition*  
1935  
Oil on canvas  
19 11/16 x 25 9/16" (50 x 65 cm)  
Kunstmuseum Basel. Gift of Hans Arp



SOPHIE TAEUBER-ARP (French, born Switzerland. 1889–1943)  
*Circle*  
1936  
Gouache and pencil on paper  
10 1/2 x 13 3/4" (26.7 x 34.9 cm)  
Private collection



SOPHIE TAEUBER-ARP (French, born Switzerland. 1889–1943)  
*Sketchbook II*  
1936–38  
Spiral-bound notebook with pencil and colored pencil on paper  
14 3/8 × 10 7/16" (36.5 × 26.5 cm)  
Fondation Arp, Clamart, France



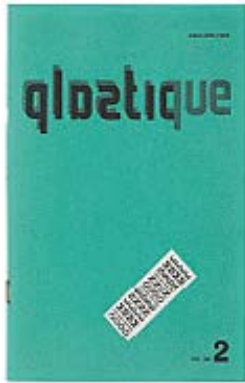
SOPHIE TAEUBER-ARP (French, born Switzerland. 1889–1943)  
*"Flight": Round Relief in Three Heights*  
1937  
Oil on plywood  
Diam.: 23 5/8" (60 cm)  
Stiftung Arp e.V., Berlin



SOPHIE TAEUBER-ARP (French, born Switzerland. 1889–1943)  
*Composition in a Circle*  
1937  
Gouache on paper  
9 3/4 × 13 1/4" (24.8 × 33.6 cm)  
Frelinghuysen Morris House & Studio, Lenox, Mass.



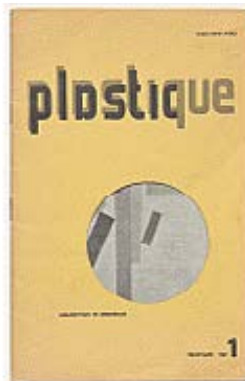
SOPHIE TAEUBER-ARP (French, born Switzerland. 1889–1943)  
*Drawing for a round relief (related to Wood Relief [1937])*  
July 1937  
Pencil on paper  
13 9/16 × 10 3/8" (34.4 × 26.3 cm)  
Stiftung Arp e.V., Berlin



Editor: SOPHIE TAEUBER-ARP (French, born Switzerland. 1889–1943)  
 Editor: JEAN (HANS) ARP (French, born Germany (Alsace). 1886–1966)  
 Editor: CÉSAR DOMELA-NIEUWENHUIS (Dutch, 1900–1992)  
 Editor: A. E. GALLATIN (American, 1881–1952)  
 Editor: GEORGE L. K. MORRIS (American, 1905–1975)  
*Plastique/Plastic, no. 2*  
 Summer 1937  
 Journal, lithograph and letterpress printed  
 9 1/2 x 6 3/16" (24.2 x 15.7 cm)  
 Fondazione Marguerite Arp, Locarno, Switzerland



SOPHIE TAEUBER-ARP (French, born Switzerland. 1889–1943)  
*Wood Relief*  
 1937  
 Oil on wood  
 Diam.: 23 5/8" (60 cm)  
 Private collection



VARIOUS ARTISTS  
 Collaborating Artist: SOPHIE TAEUBER-ARP and (French, born Switzerland. 1889–1943)  
 Collaborating Artist: CÉSAR DOMELA-NIEUWENHUIS with (Dutch, 1900–1992)  
 Collaborating Artist: JEAN (HANS) ARP (French, born Germany (Alsace). 1886–1966)  
 Collaborating Artist: GEORGE L. K. MORRIS (American, 1905–1975)  
 Publisher: A. E. GALLATIN (American, 1881–1952)  
 Printer: IMPRIMERIE DES 2 ARTISANS, PARIS  
*Plastique, no. 1*  
 1937  
 Journal, lithograph and letterpress printed  
 page (each): 9 1/2 x 6 3/16" (24.2 x 15.7 cm); overall (closed): 9 1/2 x 6 3/16 x 1/8" (24.2 x 15.7 x 0.3 cm)  
 The Museum of Modern Art, New York. Gift of Jack Shear



SOPHIE TAEUBER-ARP (French, born Switzerland. 1889–1943)  
*Collage with Elements of Objects*  
 1938  
 Cut-and-pasted paper, cut-and-pasted sandpaper, cut-and-pasted colored paper, and pencil on metallic board  
 13 3/4 x 18" (34.9 x 45.7 cm)  
 Stiftung Arp e.V., Berlin





SOPHIE TAEUBER-ARP (French, born Switzerland. 1889–1943)  
*Composition in a Circle (with Volutes)*  
 1938  
 Gouache and pencil on paper  
 13 3/4 × 10 3/16" (34.9 × 25.9 cm)  
 Stiftung Arp e.V., Berlin



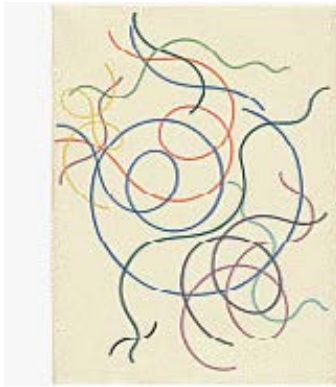
SOPHIE TAEUBER-ARP (French, born Switzerland. 1889–1943)  
*Composition with Circles and Semicircles*  
 1938  
 Cut-and-pasted colored paper, cut-and-pasted printed paper, and pencil on board  
 19 1/8 × 25 9/16" (48.5 × 65 cm)  
 Arp Museum Bahnhof Rolandseck, Remagen, Germany



VARIOUS ARTISTS  
 Collaborating Artist: SOPHIE TAEUBER-ARP (French, born Switzerland. 1889–1943)  
 Collaborating Artist: JEAN (HANS) ARP (French, born Germany (Alsace). 1886–1966)  
 Collaborating Artist: CÉSAR DOMELA-NIEUWENHUIS (Dutch, 1900–1992)  
 Collaborating Artist: GEORGE L. K. MORRIS (American, 1905–1975)  
 Publisher: A. E. GALLATIN (American, 1881–1952)  
 Printer: FRAZIER-SOYE, Paris  
*Plastique, no. 3*  
 1938  
 Journal, lithograph and letterpress printed  
 The Museum of Modern Art, New York. Gift of Jack Shear



SOPHIE TAEUBER-ARP (French, born Switzerland. 1889–1943)  
*Lines, Broad Stroke (drawing used as an illustration for Jean [Hans] Arp's 1941 book of poetry Poems without First Names)*  
 c. 1939–41  
 Colored pencil on paper  
 13 3/4 × 10 3/8" (34.9 × 26.3 cm)  
 Stiftung Arp e.V., Berlin



SOPHIE TAEUBER-ARP (French, born Switzerland. 1889–1943)  
*Movement of Lines*  
c. 1939–40  
Colored pencil on paper  
13 5/8 × 10 7/16" (34.6 × 26.5 cm)  
Stiftung Arp e.V., Berlin



SOPHIE TAEUBER-ARP (French, born Switzerland. 1889–1943)  
*Movement of Lines*  
1939  
Colored pencil on paper  
13 3/8 × 10 1/4" (34 × 26 cm)  
Private collection, Switzerland



SOPHIE TAEUBER-ARP (French, born Switzerland. 1889–1943)  
*Movement of Lines*  
1939  
Colored pencil on paper  
13 7/16 × 10 3/16" (34.2 × 25.9 cm)  
Kunsthau Zürich. Department of Prints and Drawings. Gift of Hans Arp in memory of his wife



SOPHIE TAEUBER-ARP (French, born Switzerland. 1889–1943)  
*Movement of Lines, Broad Stroke* (drawing used as an illustration for Jean [Hans] Arp's 1941 book of poetry *Poems without First Names*)  
c. 1939–41  
Colored pencil on paper  
13 9/16 × 10 3/8" (34.5 × 26.3 cm)  
Private collection, on long-term loan to the Aargauer Kunsthau, Aarau, Switzerland



SOPHIE TAEUBER-ARP (French, born Switzerland. 1889–1943)  
*Open and Closed Lines*  
 1939  
 Colored pencil on paper on board  
 13 3/4 × 10 3/8" (35 × 26.4 cm)  
 Kunstmuseum Bern. Gift of Marguerite Arp-Hagenbach



SOPHIE TAEUBER-ARP (French, born Switzerland. 1889–1943)  
*Six Separate Spaces*  
 1939  
 Oil on canvas  
 25 9/16 × 34 5/8" (65 × 88 cm)  
 Private collection, Switzerland. Courtesy von Bartha Gallery, Basel



SOPHIE TAEUBER-ARP (French, born Switzerland. 1889–1943)  
*Sketchbook V*  
 1939–40  
 Spiral-bound notebook with pencil and colored pencil on paper  
 14 3/8 × 10 7/16" (36.5 × 26.5 cm)  
 Fondation Arp, Clamart, France



VARIOUS ARTISTS  
 Collaborating Artist: SOPHIE TAEUBER-ARP (French, born Switzerland. 1889–1943)  
 Collaborating Artist: JEAN (HANS) ARP (French, born Germany (Alsace). 1886–1966)  
 Collaborating Artist: GEORGE L. K. MORRIS (American, 1905–1975)  
 Publisher: A. E. GALLATIN (American, 1881–1952)  
 Printer: HENRI JOURDE, Paris  
*Plastique, no. 4*  
 1939  
 Journal, lithograph and letterpress printed  
 The Museum of Modern Art, New York. Gift of Jack Shear



VARIOUS ARTISTS

Collaborating Artist: SOPHIE TAEUBER-ARP (French, born Switzerland. 1889–1943)

Collaborating Artist: JEAN (HANS) ARP (French, born Germany (Alsace). 1886–1966)

Collaborating Artist: GEORGE L. K. MORRIS (American, 1905–1975)

Publisher: A. E. GALLATIN (American, 1881–1952)

Printer: HENRI JOURDE, Paris

*Plastique*, no. 5

1939

Journal, lithograph and letterpress printed

The Museum of Modern Art, New York. Gift of Jack Shear



SOPHIE TAEUBER-ARP (French, born Switzerland. 1889–1943)

*Drawing*

Veyrier-du-Lac, France, 1940

Colored pencil and pencil on paper

13 9/16 × 10 3/8" (34.4 × 26.4 cm)

Arp Museum Bahnhof Rolandseck, Remagen, Germany



SOPHIE TAEUBER-ARP (French, born Switzerland. 1889–1943)

*Geometric and Undulating*

December 24, 1940

Colored pencil and pencil on paper

12 5/8 × 18 9/16" (32.1 × 47.2 cm)

Stiftung Arp e.V., Berlin



SOPHIE TAEUBER-ARP (French, born Switzerland. 1889–1943)

*Movement of Colored Lines*

1940

Crayon, chalk, and pencil on colored paper

14 1/16 × 11" (35.8 × 28 cm)

Stiftung Arp e.V., Berlin



SOPHIE TAEUBER-ARP (French, born Switzerland. 1889–1943)  
*Movement of Colored Lines*  
 1940  
 Colored pencil and pencil on paper  
 10 3/8 × 13 9/16" (26.3 × 34.4 cm)  
 Stiftung Arp e.V., Berlin



SOPHIE TAEUBER-ARP (French, born Switzerland. 1889–1943)  
*Nérac*  
 1940  
 Pencil on paper  
 10 5/8 × 13 5/8" (27 × 34.6 cm)  
 Stiftung Arp e.V., Berlin



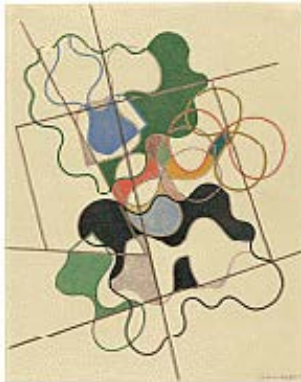
Author: JEAN (HANS) ARP (French, born Germany (Alsace). 1886–1966)  
 SOPHIE TAEUBER-ARP (French, born Switzerland. 1889–1943)  
 Publisher: JEAN (HANS) ARP (French, born Germany (Alsace). 1886–1966)  
 Publisher: SOPHIE TAEUBER-ARP (French, born Switzerland. 1889–1943)  
 IMPRIMERIE MODERNE, CANNES  
*Poems without First Names, including Undulating Lines (original drawing from the deluxe edition of Jean [Hans] Arp's 1941 book of poetry Poems without First Names)*  
 1941  
 Illustrated book with three linoleum cuts and one colored-pencil and pencil drawing  
 Book: 8 7/16 × 5 1/2" (21.4 × 14 cm) closed  
 Drawing: 8 7/16 × 10 3/8" (21.4 × 26.3 cm) open  
 Overall approximate dimensions (as laid out): 8 11/16 x 55 1/8" (22 x 140 cm)  
 Stiftung Arp e.V., Berlin



SOPHIE TAEUBER-ARP (French, born Switzerland. 1889–1943)  
*Crossing of Lines, Bars, and Figure-Planes*  
 1941  
 Colored pencil and pencil on paper  
 9 7/16 × 11 7/16" (24 × 29 cm)  
 Kunstmuseum Basel. Department of Prints and Drawings. Gift of Marguerite Arp-Hagenbach



SOPHIE TAEUBER-ARP (French, born Switzerland. 1889–1943)  
*Crossing of Straight Lines, Planes, Green Cross, and Fragment of Blue Cross*  
1941  
Colored pencil and pencil on paper  
19 11/16 × 25 9/16" (50 × 65 cm)  
Stiftung Arp e.V., Berlin



SOPHIE TAEUBER-ARP (French, born Switzerland. 1889–1943)  
*Geometric and Undulating*  
Grasse, France, 1941  
Colored pencil and pencil on paper  
19 3/8 × 15 7/16" (49.2 × 39.2 cm)  
Museo d'Arte della Svizzera Italiana, Lugano, Switzerland. Collection Cantone Ticino



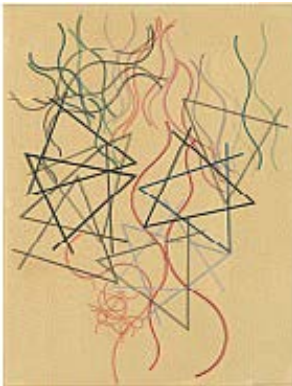
SOPHIE TAEUBER-ARP (French, born Switzerland. 1889–1943)  
*Geometric and Undulating Lines (original drawing from the deluxe edition of Jean [Hans] Arp's 1941 book of poetry Poems without First Names)*  
1941  
Colored pencil and pencil on paper  
8 7/16 × 5 1/4" (21.5 × 13.4 cm)  
Fondazione Marguerite Arp, Locarno, Switzerland



SOPHIE TAEUBER-ARP (French, born Switzerland. 1889–1943)  
*Geometric and Undulating Lines (original drawing from the deluxe edition of Jean [Hans] Arp's 1941 book of poetry Poems without First Names)*  
1941  
Colored pencil and pencil on paper  
8 3/4" x 5 1/2" (22.2 x 13.9 cm)  
Private collection



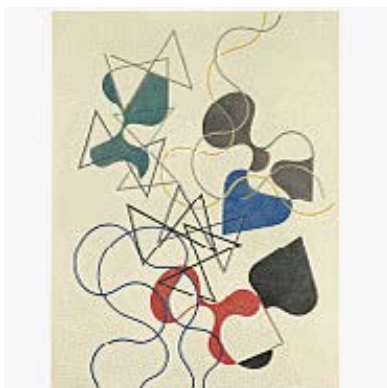
SOPHIE TAEUBER-ARP (French, born Switzerland. 1889–1943)  
*Geometric and Undulating Lines, Planes* (original drawing from the deluxe edition of Jean [Hans] Arp's 1941 book of poetry *Poems without First Names*)  
1941  
Colored pencil and pencil on paper  
8 7/16 × 5 1/4" (21.5 × 13.4 cm)  
Arp Museum Bahnhof Rolandseck, Remagen, Germany



SOPHIE TAEUBER-ARP (French, born Switzerland. 1889–1943)  
*Geometric and Undulating, Lines*  
March 13, 1941  
Colored pencil and pencil on paper  
25 3/16 × 19 3/8" (64 × 49.2 cm)  
Stiftung Arp e.V., Berlin



SOPHIE TAEUBER-ARP (French, born Switzerland. 1889–1943)  
*Lines of Spring, Undulating Lines, Filled Planes, alternatively titled Passion of Lines*  
Grasse, France, 1941  
Colored pencil and pencil on paper  
16 3/4 × 12 1/2" (42.5 × 31.8 cm)  
Private collection, on long-term loan to the Aargauer Kunsthau, Aarau, Switzerland



SOPHIE TAEUBER-ARP (French, born Switzerland. 1889–1943)  
*Lines of Summer*  
1941  
Colored pencil and pencil on paper  
25 9/16 × 19 11/16" (65 × 50 cm)  
Private collection, on long-term loan to the Aargauer Kunsthau, Aarau, Switzerland



SOPHIE TAEUBER-ARP (French, born Switzerland. 1889–1943)  
*Undulating Lines* (original drawing from the deluxe edition of Jean [Hans] Arp's  
1941 book of poetry *Poems without First Names*)  
1941  
Colored pencil and pencil on paper  
8 3/8 × 5 1/4" (21.2 × 13.3 cm)  
Stiftung Arp e.V., Berlin



SOPHIE TAEUBER-ARP (French, born Switzerland. 1889–1943)  
*Château folie, Grasse*  
June 1942  
Pencil on paper  
10 3/16 × 13 1/4" (25.8 × 33.7 cm)  
Stiftung Arp e.V., Berlin



SOPHIE TAEUBER-ARP (French, born Switzerland. 1889–1943)  
*Château folie, Grasse*  
1942  
Gouache and pencil on paper  
8 5/16 × 10 5/8" (21.1 × 27 cm)  
Stiftung Arp e.V., Berlin

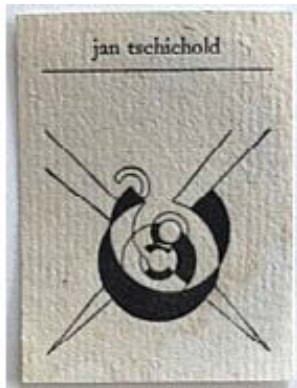


SOPHIE TAEUBER-ARP (French, born Switzerland. 1889–1943)  
*Lines of Summer*  
Grasse, France, 1942  
Colored pencil and pencil on paper  
19 5/16 × 14 15/16" (49 × 38 cm)  
Emanuel Hoffmann Foundation, Basel, on permanent loan to the Öffentliche  
Kunstsammlung Basel





SOPHIE TAEUBER-ARP (French, born Switzerland. 1889–1943)  
*Construction of a Black Circle and Burgundy, Red, and Blue Segments*  
1942  
Ink, gouache, and pencil on paper  
13 7/8 × 10 11/16" (35.2 × 27.2 cm)  
Arp Museum Bahnhof Rolandseck, Remagen, Germany



Designer: SOPHIE TAEUBER-ARP (French, born Switzerland. 1889–1943)  
*Ex libris for Jan Tschichold, based on the drawing Geometric Construction*  
(1942)  
1942  
2 3/16 x 1 9/16" (5.5 x 4 cm)  
Private collection



SOPHIE TAEUBER-ARP (French, born Switzerland. 1889–1943)  
*Geometric Construction*  
1942  
Ink and pencil on paper on board  
9 13/16 × 9 13/16" (25 × 25 cm)  
Arp Museum Bahnhof Rolandseck, Remagen, Germany



SOPHIE TAEUBER-ARP (French, born Switzerland. 1889–1943)  
*Geometric Construction*  
1942  
Ink, pencil, and gouache on paper  
8 5/16 × 8 1/8" (21.1 × 20.7 cm)  
Stiftung Arp e.V., Berlin



SOPHIE TAEUBER-ARP (French, born Switzerland. 1889–1943)  
*Geometric Construction*  
1942  
Ink, pencil, and gouache on paper  
7 × 6 15/16" (17.8 × 17.7 cm)  
Stiftung Arp e.V., Berlin



SOPHIE TAEUBER-ARP (French, born Switzerland. 1889–1943)  
*Geometric Construction*  
1942  
Ink, pencil, and gouache on paper  
9 15/16 × 8 1/4" (25.2 × 20.9 cm)  
Stiftung Arp e.V., Berlin



SOPHIE TAEUBER-ARP (French, born Switzerland. 1889–1943)  
*Geometric Construction*  
1942  
Ink and pencil on paper  
7 11/16 × 7 3/8" (19.5 × 18.8 cm)  
Stiftung Arp e.V., Berlin



SOPHIE TAEUBER-ARP (French, born Switzerland. 1889–1943)  
*Geometric Construction (design for an ex libris for Jan Tschichold)*  
1942  
Ink, pencil, and gouache on paper on board  
10 3/16 × 8 1/4" (25.8 × 21 cm)  
Private collection



Author: GABRIELLE BUFFET-PICABIA (French, 1881–1985)  
SOPHIE TAEUBER-ARP (French, born Switzerland. 1889–1943)  
Publisher: ALLIANZ-VERLAG, ZÜRICH  
*Les derniers 9 dessins de Sophie Taeuber-Arp*  
1943  
Printed book  
7 11/16 x 7 11/16" (19.5 x 19.5 cm)  
The Museum of Modern Art Library, New York



Author: GABRIELLE BUFFET-PICABIA (French, 1881–1985)  
SOPHIE TAEUBER-ARP (French, born Switzerland. 1889–1943)  
Publisher: ALLIANZ-VERLAG, ZÜRICH  
*Les derniers 9 dessins de Sophie Taeuber-Arp*  
1943  
Printed book  
7 11/16 x 7 11/16" (19.5 x 19.5 cm)  
The Museum of Modern Art Library, New York



Author: GABRIELLE BUFFET-PICABIA (French, 1881–1985)  
SOPHIE TAEUBER-ARP (French, born Switzerland. 1889–1943)  
Printer: ALLIANZ-VERLAG, ZÜRICH  
*Les derniers 9 dessins de Sophie Taeuber-Arp*  
1943  
Printed book  
7 11/16 x 7 11/16" (19.5 x 19.5 cm)  
Aargauer Kunsthaus, Aarau, Switzerland