

Frédéric Bruly Bouabré: World Unbound

The Museum of Modern Art, New York March 13, 2022-August 13, 2022
11w53, 3rd Floor, South Gallery

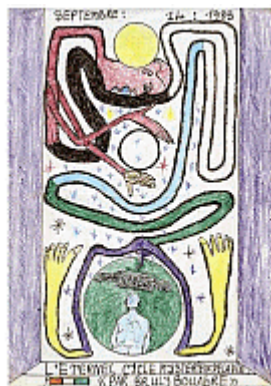
Entrance

Frédéric Bruly Bouabré reciting his Bété syllabary
2009
Audio file
Courtesy Charles L. Riley, *Cataloging Africana*

Gallery 1: Bété World



FRÉDÉRIC BRULY BOUABRÉ (Ivorian, 1923–2014)
Mythologie Bété "Génie guié guié guié" "Génie couvert d'yeux" (Bété Mythology "Guié Guié Guié Genie" "Genie Covered with Eyes")
c. 1980
Ballpoint pen on laminated paper on cardboard
16 1/2 × 9 5/8" (41.9 × 24.4 cm)
Private Collection, Paris. Courtesy André Magnin



FRÉDÉRIC BRULY BOUABRÉ (Ivorian, 1923–2014)
L'éternel cycle mystérieux de la vie (The Eternal Mysterious Cycle of Life)
1983
Ballpoint pen and colored pencil on cardboard
11 13/16 × 8 1/4" (30 × 21 cm)
Collection André Magnin, Paris



FRÉDÉRIC BRULY BOUABRÉ (Ivorian, 1923–2014)

Mythologie Bété

1987–1988

Nineteen drawings. Graphite and ballpoint pen on cardboard packaging

Each: 5 11/16 × 3 3/4" (14.5 × 9.6 cm)

Frame: 31 × 38 7/8 × 1 1/8" (78.7 × 98.7 × 2.9 cm)

Musée National d'Art Moderne/Centre de Création Industrielle, Centre Georges Pompidou, Paris

Rotates with Civilization Bété (LN2022.49.1-27)



FRÉDÉRIC BRULY BOUABRÉ (Ivorian, 1923–2014)

Civilisation Bété

1988

Twenty-seven drawings. Graphite, colored pencil, felt-tip pen, and ballpoint pen on cardboard packaging

Each: 5 9/16 × 3 3/4" (14.2 × 9.6 cm)

Frame: 38 15/16 × 31 1/8 × 1 1/8" (98.9 × 79.1 × 2.9 cm)

Musée National d'Art Moderne/Centre de Création Industrielle, Centre Georges Pompidou, Paris

Rotates with Mythologie Bété (LN2022.5.1-19)



FRÉDÉRIC BRULY BOUABRÉ (Ivorian, 1923–2014)

Alphabet Bété

1990–91

449 drawings. Colored pencil, pencil, and ballpoint pen on board

Each: 3 7/8 × 5 7/8" (9.8 × 14.9 cm)

The Museum of Modern Art, New York. The Jean Pigozzi Collection of African Art.



FRÉDÉRIC BRULY BOUABRÉ (Ivorian, 1923–2014)

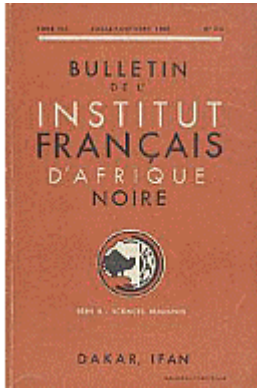
Vision divine du 11 mars 1948 (Divine Vision from March 11, 1948)

1991

Eight drawings. Ballpoint pen and colored pencil on cardboard

Each: 6 × 4" (15.2 × 10.2 cm)

Collection André Magnin, Paris



Bulletin de l'Institut français d'Afrique noire, series B, vol. 20, nos. 3-4
July-October 1958
Periodical
9 7/16 × 6 1/8" (24 × 15.5 cm)
Collection André Magnin, Paris



Packaging for Darling hair extensions, with drawings by Frédéric Bruly Bouabré
Five pieces of cardboard
Each: 6 × 4" (15.2 × 10.2 cm)
Collection André Magnin, Paris



AKAN PEOPLES, GHANA
Gold weight: Animal
n.d.
Brass
13/16 × 3/8 × 1 11/16" (2 × 1 × 4.3 cm)
Brooklyn Museum. Bequest of Laura L. Barnes



AKAN PEOPLES, GHANA
Gold weight: Antelope
n.d.
Brass
1 5/8 × 13/16 × 9/16" (4.1 × 2.1 × 1.5 cm)
Brooklyn Museum. Bequest of Laura L. Barnes



AKAN PEOPLES, GHANA

Gold weight: Crocodile

n.d.

Brass

1 3/16 × 3/16 × 3 9/16" (3 × 0.5 × 9 cm)

Brooklyn Museum. Bequest of Laura L. Barnes



AKAN PEOPLES, GHANA

Gold weight: Fish

n.d.

Brass

9/16 × 2 1/4 × 2 1/16" (1.5 × 5.7 × 5.2 cm)

Brooklyn Museum. Bequest of Laura L. Barnes



AKAN PEOPLES, GHANA

Gold weight: Male figure

n.d.

Brass

1 1/2 × 11/16 × 1/2" (3.8 × 1.7 × 1.2 cm)

Brooklyn Museum. Charles Stewart Smith Memorial Fund



AKAN PEOPLES, GHANA

Gold weight: Porcupine

n.d.

Brass

13/16 × 13/16 × 1 7/16" (2 × 2.1 × 3.6 cm)

Brooklyn Museum. Bequest of Laura L. Barnes



AKAN PEOPLES, GHANA

Gold weight: Sankofa bird

n.d.

Brass

1 × 2 3/4 × 1 1/4" (2.5 × 7 × 3.2 cm)

Brooklyn Museum. Carll H. de Silver Fund



AKAN PEOPLES, GHANA

Gold weight: Shield frame

n.d.

Brass

7/8 × 1/4 × 1 1/4" (2.2 × 0.6 × 3.2 cm)

Brooklyn Museum. The Franklin H. Williams Collection of Ashanti Brass Weights and Accessory Objects for Weighing Gold. Gift of Mrs. and Mrs. Franklin H. Williams



AKAN PEOPLES, GHANA

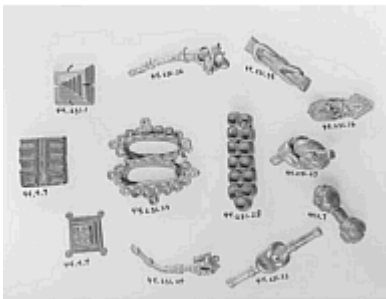
Gold weight: Elephant

19th or 20th century

Brass

1 11/16 × 3 3/4" (4.3 × 9.5 cm)

Brooklyn Museum. Bequest of Laura L. Barnes



AKAN PEOPLES, GHANA

Gold weight: Geometric

late 19th-mid 20th century

Copper

3/8 × 1" (1 × 2.5 cm)

Brooklyn Museum. Henry L. Batterman Fund



AKAN PEOPLES, GHANA

Gold weight: Geometric

19th-20th century

Copper alloy

$5/8 \times 5/8 \times 1/4$ " (1.6 × 1.6 × 0.6 cm)

Brooklyn Museum. Gift of Mr. and Mrs. Franklin H. Williams



AKAN PEOPLES, GHANA

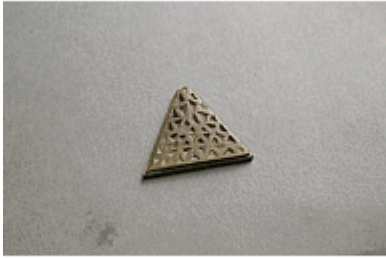
Gold weight: Geometric

19th-20th century

Copper alloy

$1 \times 1 \times 1/2$ " (2.5 × 2.5 × 1.3 cm)

Brooklyn Museum. Gift of Mr. and Mrs. Franklin H. Williams



AKAN PEOPLES, GHANA

Gold weight: Geometric

19th-20th century

Copper alloy

$1 \frac{1}{2} \times 3/16$ " (3.8 × 0.5 cm)

Brooklyn Museum. Gift of Mr. and Mrs. Franklin H. Williams



AKAN PEOPLES, GHANA

Gold weight: Geometric

19th-20th century

Brass

$1 \frac{1}{4} \times 1 \frac{1}{8} \times 3/8$ " (3.2 × 2.9 × 1 cm)

Brooklyn Museum. Gift of Mr. and Mrs. Franklin H. Williams



AKAN PEOPLES, GHANA

Gold weight: Geometric

19th-20th century

Copper alloy

1 1/4 × 1 × 1/2" (3.2 × 2.5 × 1.3 cm)

Brooklyn Museum. Gift of Mr. and Mrs. Franklin H. Williams



AKAN PEOPLES, GHANA

Gold weight: Geometric

19th-20th century

Copper alloy

7/8 × 3/4 × 1/4" (2.2 × 1.9 × 0.6 cm)

Brooklyn Museum. Gift of Mr. and Mrs. Franklin H. Williams



AKAN PEOPLES, GHANA

Gold weight: Geometric

19th century

Copper alloy

1 1/2 × 1 7/16" (3.8 × 3.7 cm)

Brooklyn Museum. Gift of Shirley B. Williams



AKAN PEOPLES, GHANA

Gold weight: Geometric

19th century

Copper alloy

1/4 × 1 5/8 × 1 5/8" (0.6 × 4.1 × 4.1 cm)

Brooklyn Museum. Gift of Shirley B. Williams



AKAN PEOPLES, GHANA

Gold weight: Leopard

19th or 20th century

Brass

1 11/16 × 3 3/4" (4.3 × 9.5 cm)

Brooklyn Museum. Bequest of Laura L. Barnes



AKAN PEOPLES, GHANA

Gold weight: Warrior

late 19th-early 20th century

Bronze

3 1/2 × 1 1/4 × 1 3/8" (8.9 × 3.2 × 3.5 cm)

Brooklyn Museum. Gift of Merton D. Simpson to the Jennie Simpson Educational Collection of African Art



AKAN PEOPLES, GHANA

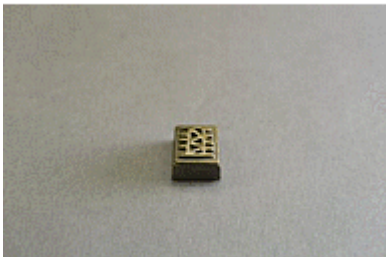
Gold-dust box lid

19th-20th century

Copper alloy

1 5/8 × 1 1/2 × 1/8" (4.1 × 3.8 × 0.3 cm)

Brooklyn Museum. Gift of Mr. and Mrs. Franklin H. Williams



AKAN PEOPLES, GHANA

Rectangular box and lid

19th century

Copper alloy

1 1/2 × 13/16" (3.8 × 2 cm)

Brooklyn Museum. Gift of Shirley B. Williams



FRÉDÉRIC BRULY BOUABRÉ (Ivorian, 1923–2014)
Poids akan à peser l'or (Akan Weights for Weighing Gold)
1989–1990
Forty-two drawings. Ballpoint pen and colored pencil on cardboard
Each: 5 7/8 × 3 15/16" (15 × 10 cm) or 6 5/16 × 4" (16 × 10 cm)
The Jean Pigozzi Collection of African Art



Békora Stones
n.d.
Twenty-five staurolite rocks
Collection André Magnin, Paris

FRÉDÉRIC BRULY BOUABRÉ (Ivorian, 1923–2014)
Le livre des lois divines révélés dans l'Ordre des persécutés par le révélateur Cheik-Nadro, fils de Dalo Gbeuly (The Book of Divine Laws Revealed in the Order of the Persecuted by the Revealer Cheik-Nadro, Son of Dalo-Gbeuly)
1945–1963
417 pages. Typescript, ink, and colored pencil on paper.
10 11/16 × 8 3/16 × 2 3/8" (27.2 × 20.8 × 6 cm)
Bouabré Family Collection. Courtesy André Magnin

FRÉDÉRIC BRULY BOUABRÉ (Ivorian, 1923–2014)
Solution Bruly aux poids d'or, ou livre africain (Bruly Solution to Gold Weights, or African Pound)
1972
198 pages. Ballpoint pen on paper
8 5/8 × 6 5/8 × 1/2" (21.9 × 16.9 × 1.2 cm)
Collection André Magnin, Paris

Gallery 2: Knowledge of the World



FRÉDÉRIC BRULY BOUABRÉ (Ivorian, 1923–2014)

Semence de la vie (Seed of Life)

1977

Twenty-two drawings. Ballpoint pen, colored pencil, and graphite on paper

Each: 11 13/16 × 8 1/4" (30 × 21 cm)

The Jean Pigozzi Collection of African Art



FRÉDÉRIC BRULY BOUABRÉ (Ivorian, 1923–2014)

Connaissance du monde (Knowledge of the World)

1987–2008

Thirty drawings. Colored pencil, pencil, and ballpoint pen on board Dimensions vary from 5 7/8 × 3 15/16" (15 × 10 cm) to 11 7/8 × 9 1/2" (30.1 × 24.2 cm)

The Museum of Modern Art, New York. The Jean Pigozzi Collection of African Art.



FRÉDÉRIC BRULY BOUABRÉ (Ivorian, 1923–2014)

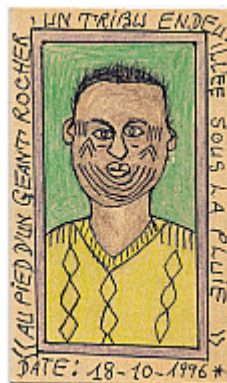
Relevés des signes observés sur oranges (Readings from Signs Observed on Oranges)

1989–2008

Eighty-six drawings. Ballpoint pen and colored pencil on cardboard, some with graphite

Dimensions vary from 3 9/16 × 5 15/16" (9 × 15 cm) to 9 7/16 × 12 3/16" (24 × 31 cm)

The Jean Pigozzi Collection of African Art



FRÉDÉRIC BRULY BOUABRÉ (Ivorian, 1923–2014)

Musée du visage africain (Museum of the African Face)

1991–1997

162 drawings. Ballpoint pen and colored pencil on cardboard

Each: 5 7/8 × 3 15/16" (15 × 10 cm)

The Jean Pigozzi Collection of African Art

Manuscript Case

FRÉDÉRIC BRULY BOUABRÉ (Ivorian, 1923–2014)
La symbolique Bété imagée (genèse) (The Pictorial Bété Symbolism [Genesis])
c. 1970
102 pages. Ballpoint pen and pencil on cardboard glued on paper
9 7/16 × 6 1/4 × 9/16" (24 × 15.8 × 1.5 cm)
Collection Galerie MAGNIN-A, Paris

FRÉDÉRIC BRULY BOUABRÉ (Ivorian, 1923–2014)
Discours de Léopold Sédar Senghor a l'Université d'Abidjan (Speech by Léopold Sédar Senghor at the University of Abidjan)
1972
404 pages. Pencil and ballpoint pen on paper, with photograph of Léopold Sédar Senghor published in the Ivorian press
8 1/2 × 6 × 1 1/4" (21.6 × 15.2 × 3.2 cm)
Bouabré Family Collection. Courtesy André Magnin

FRÉDÉRIC BRULY BOUABRÉ (Ivorian, 1923–2014)
Un génie noir dans le musée ivoirien (A Black Genie in the Ivorian Museum)
1972
272 pages. Felt-tip pen and pencil on paper
8 7/16 × 6 1/2" (21.5 × 16.5 cm)
Bouabré Family Collection. Courtesy André Magnin

FRÉDÉRIC BRULY BOUABRÉ (Ivorian, 1923–2014)
Africa: Birth of Science
1974
140 pages. Ballpoint pen on paper and carbon-paper transfer
8 1/4 × 5 13/16 × 13/16" (21 × 14.8 × 2 cm)
Bouabré Family Collection. Courtesy André Magnin

Manuscript Case

FRÉDÉRIC BRULY BOUABRÉ (Ivorian, 1923–2014)

Le musée du visage africain (nouvelle version) (The Museum of the African Face [New Version])

1975

Forty-eight pages. Typescript, ballpoint pen, and pencil on cardboard glued to paper

11 5/8 × 8 7/16 × 9/16" (29.5 × 21.4 × 1.5 cm)

Collection Galerie MAGNIN-A, Paris

FRÉDÉRIC BRULY BOUABRÉ (Ivorian, 1923–2014)

Le calendrier du monde noir d'origine Bété (The Calendar of the Black World of Bété Origin)

1982

16 pages. Ballpoint pen and colored pencil on paper

11 7/16 × 8 1/16" (29 × 20.5 cm)

Bouabré Family Collection. Courtesy André Magnin

FRÉDÉRIC BRULY BOUABRÉ (Ivorian, 1923–2014)

West African Alphabet (The Bété)

1982

122 pages. Felt-tip pen on paper

9 1/16 × 6 7/16 × 3/8" (23 × 16.3 × 1 cm)

Collection André Magnin, Paris

FRÉDÉRIC BRULY BOUABRÉ (Ivorian, 1923–2014)

La science d'observation et le mystère de la vie (The Science of Observation and the Mystery of Life)

1985

751 pages. Felt-tip pen on paper

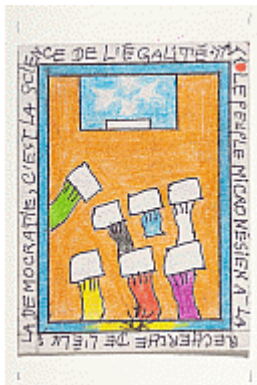
8 7/8 × 6 1/8 × 2 3/8" (22.5 × 15.5 × 6 cm)

Bouabré Family Collection. Courtesy André Magnin

Gallery 2: A World of Relations



FRÉDÉRIC BRULY BOUABRÉ (Ivorian, 1923–2014)
Hommage aux femmes du monde (Homage to the Women of the World)
2007
Two hundred drawings. Ballpoint pen and colored pencil on card
Each: 5 15/16 × 4 1/8" (15 × 10.5 cm)
Collection agnès b., Paris



FRÉDÉRIC BRULY BOUABRÉ (Ivorian, 1923–2014)
La démocratie c'est la science de l'égalité (Democracy is the Science of Equality)
2010–2011
182 drawings. Ballpoint pen and colored pencil on cardboard
Each: 5 7/8 × 4 5/16" (15 × 11 cm)
Collection Gervanne + Matthias Leridon



Frédéric Bruly Bouabré: L'universaliste (Frédéric Bruly Bouabré: The Universalist)
directed by Andress Alvarez and Philippe Lespinasse
2010
Video (color, sound); 32 minutes. French with English subtitles.
Lausanne: Collection de l'Art Brut; Le Tourne, France: Lokomotiv Films
Courtesy Collection de l'Art Brut and Philippe Lespinasse