

Between Two Rivers Final Checklist

Gallery One



An-My Lê, American, born Vietnam 1960
Untitled, Nam Ha, 1994
Gelatin silver print
22 3/8 × 15 3/4" (56.8 × 40 cm)



An-My Lê, American, born Vietnam 1960
Untitled, Hanoi, 1994
Gelatin silver print
15 3/4 × 22 3/8" (40 × 56.8 cm)



An-My Lê, American, born Vietnam 1960
Untitled, Hanoi, 1995
Gelatin silver print
15 3/4 × 22 3/8" (40 × 56.8 cm)

Between Two Rivers Final Checklist



An-My Lê, American, born Vietnam 1960
Untitled, Hanoi, 1998
Gelatin silver print
15 3/4 × 22 3/8" (40 × 56.8 cm)



An-My Lê, American, born Vietnam 1960
Untitled, Mekong Delta, 1995
Gelatin silver print
15 3/4 × 22 3/8" (40 × 56.8 cm)



An-My Lê, American, born Vietnam 1960
Untitled, Gia Lai, 1994
Gelatin silver print
15 3/4 × 22 3/8" (40 × 56.8 cm)

Between Two Rivers Final Checklist



An-My Lê, American, born Vietnam 1960
Untitled, Son Tay, 1998
Gelatin silver print
15 3/4 × 22 3/8" (40 × 56.8 cm)



An-My Lê, American, born Vietnam 1960
Untitled, Soc Son, 1996
Gelatin silver print
15 3/4 × 22 3/8" (40 × 56.8 cm)



An-My Lê, American, born Vietnam 1960
Untitled, Mekong Delta, 1994
Gelatin silver print
15 3/4 × 22 3/8" (40 × 56.8 cm)

Between Two Rivers Final Checklist



An-My Lê, American, born Vietnam 1960
Untitled, But Thap, 1998
Gelatin silver print
15 3/4 × 22 3/8" (40 × 56.8 cm)



An-My Lê, American, born Vietnam 1960
Untitled, Mekong Delta, 1994
Gelatin silver print
15 3/4 × 22 3/8" (40 × 56.8 cm)



An-My Lê, American, born Vietnam 1960
Untitled, Thanh Hoa, 1998
Gelatin silver print
15 3/4 × 22 3/8" (40 × 56.8 cm)

Between Two Rivers Final Checklist



An-My Lê, American, born Vietnam 1960
Untitled, Tien Phuong, 1995
Gelatin silver print
15 3/4 × 22 3/8" (40 × 56.8 cm)



An-My Lê, American, born Vietnam 1960
Untitled, Ho Chi Minh City, 1998
Gelatin silver print
15 3/4 × 22 3/8" (40 × 56.8 cm)



An-My Lê, American, born Vietnam 1960
Untitled, Ho Chi Minh City, 1995
Gelatin silver print
15 3/4 × 22 3/8" (40 × 56.8 cm)

Between Two Rivers Final Checklist



An-My Lê, American, born Vietnam 1960
Untitled, Ho Chi Minh City, 1995
Gelatin silver print
15 3/4 × 22 3/8" (40 × 56.8 cm)



An-My Lê, American, born Vietnam 1960
Untitled, Bac Giang, 1995
Gelatin silver print
15 3/4 × 22 3/8" (40 × 56.8 cm)



An-My Lê, American, born Vietnam 1960
Untitled, Central Highlands, 1998
Gelatin silver print
15 3/4 × 22 3/8" (40 × 56.8 cm)

Between Two Rivers Final Checklist



An-My Lê, American, born Vietnam 1960

Hồ Chí Minh City, Vân, and Trúc, An Dương Vương Gate, 2011

Inkjet print

14 1/4 x 20" (36.2 x 50.8 cm)



An-My Lê, American, born Vietnam 1960

Hồ Chí Minh City, Hồng Nhung, 2011

Inkjet print

14 1/4 x 20" (36.2 x 50.8 cm)



An-My Lê, American, born Vietnam 1960

New Orleans, Julie, Heritage and Hope Gala, 2011

Inkjet print

14 1/4 x 20" (36.2 x 50.8 cm)

Between Two Rivers Final Checklist



An-My Lê, American, born Vietnam 1960

New Orleans, Friends, Heritage and Hope Gala, 2011

Inkjet print

14 1/4 × 20" (36.2 × 50.8 cm)



An-My Lê, American, born Vietnam 1960

Hồ Chí Minh City, Script Supervisor, The Taste of Almond TV series, 2011

Inkjet print

14 1/4 × 20" (36.2 × 50.8 cm)



An-My Lê, American, born Vietnam 1960

Hồ Chí Minh City, Anh Thư, Mỹ Linh, and Bảo Anh, 2011

Inkjet print

14 1/4 × 20" (36.2 × 50.8 cm)

Between Two Rivers Final Checklist



An-My Lê, American, born Vietnam 1960
New Orleans, Hương, 2011
Inkjet print
14 1/4 x 20" (36.2 x 50.8 cm)



An-My Lê, American, born Vietnam 1960
Hồ Chí Minh City, Sống Design Office Kitchen, 2011
Inkjet print
14 1/4 x 20" (36.2 x 50.8 cm)



An-My Lê, American, born Vietnam 1960
Hồ Chí Minh City, Lý, Sống Design Studio, 2011
Inkjet print
14 1/4 x 20" (36.2 x 50.8 cm)

Between Two Rivers Final Checklist

Gallery Two



An-My Lê, American, born Vietnam 1960
Tiger Cage, 1999-2002
Gelatin silver print
38 × 26 1/2" (96.5 × 67.3 cm)



An-My Lê, American, born Vietnam 1960
Rescue, 1999-2002
Gelatin silver print
26 1/2 × 38" (67.3 × 96.5 cm)



An-My Lê, American, born Vietnam 1960
Landing Zone, 1999-2002
Gelatin silver print
26 1/2 × 38" (67.3 × 96.5 cm)

Between Two Rivers Final Checklist



An-My Lê, American, born Vietnam 1960
Tall Grass I, 1999-2002
Gelatin silver print
26 1/2 × 38" (67.3 × 96.5 cm)



An-My Lê, American, born Vietnam 1960
Ambush I, 1999-2002
Gelatin silver print
26 1/2 × 38" (67.3 × 96.5 cm)



An-My Lê, American, born Vietnam 1960
Viet Cong Camp, 1999-2002
Gelatin silver print
26 1/2 × 38" (67.3 × 96.5 cm)

Between Two Rivers Final Checklist



An-My Lê, American, born Vietnam 1960
Cots, 1999-2002
Gelatin silver print
26 1/2 × 38" (67.3 × 96.5 cm)



An-My Lê, American, born Vietnam 1960
Sniper II, 1999-2002
Gelatin silver print
26 1/2 × 38" (67.3 × 96.5 cm)



An-My Lê, American, born Vietnam 1960
Lesson, 1999-2002
Gelatin silver print
26 1/2 × 38" (67.3 × 96.5 cm)

Between Two Rivers Final Checklist



An-My Lê, American, born Vietnam 1960

Small Wars, 2002

4K video projection from 16mm film (black and white, silent)

5 min.



An-My Lê, American, born Vietnam 1960

đô-mi-nô, 2021

Installation with 181 vintage novelty zippo-style lighters

Each: 6 1/2 × 4 1/4 × 1 1/2" (16.5 × 10.8 × 3.8 cm)

Gallery Three



An-My Lê, American, born Vietnam 1960

Night Operations I, 2003-2004

Gelatin silver print

26 1/2 × 38" (67.3 × 96.5 cm)

Between Two Rivers Final Checklist



An-My Lê, American, born Vietnam 1960
Night Operations IV, 2003-2004
Gelatin silver print
26 1/2 × 38" (67.3 × 96.5 cm)



An-My Lê, American, born Vietnam 1960
Night Operations III, 2003-2004
Gelatin silver print
26 1/2 × 38" (67.3 × 96.5 cm)



An-My Lê, American, born Vietnam 1960
Embassy Medevac, 2003-2004
Gelatin silver print
26 1/2 × 38" (67.3 × 96.5 cm)

Between Two Rivers Final Checklist



An-My Lê, American, born Vietnam 1960
Mortar Impact, 2003-2004
Gelatin silver print
Other: 26 1/2 × 38" (67.3 × 96.5 cm)



An-My Lê, American, born Vietnam 1960
Infantry Officers' Brief, 2003-2004
Gelatin silver print
26 1/2 × 38" (67.3 × 96.5 cm)



An-My Lê, American, born Vietnam 1960
Security and Stabilization Operations, Graffiti I, 2003-2004
Gelatin silver print
26 1/2 × 38" (67.3 × 96.5 cm)

Between Two Rivers Final Checklist



An-My Lê, American, born Vietnam 1960
Infantry Platoon, Machine Gunners, 2003-2004
Gelatin silver print
26 1/2 × 38" (67.3 × 96.5 cm)



An-My Lê, American, born Vietnam 1960
Security and Stabilization Operations, Graffiti II, 2003-2004
Gelatin silver print
26 1/2 × 38" (67.3 × 96.5 cm)



An-My Lê, American, born Vietnam 1960
Combat Operations Center Guard, 2003-2004
Gelatin silver print
26 1/2 × 38" (67.3 × 96.5 cm)

Between Two Rivers Final Checklist



An-My Lê, American, born Vietnam 1960
Rocket-propelled Grenade Ambush, 2003-2004
Gelatin silver print
26 1/2 × 38" (67.3 × 96.5 cm)



An-My Lê, American, born Vietnam 1960
Debriefing, 2003-2004
Gelatin silver print
26 1/2 × 38" (67.3 × 96.5 cm)



An-My Lê, American, born Vietnam 1960
Security and Stabilization Operations II, 2003-2004
Gelatin silver print
26 1/2 × 38" (67.3 × 96.5 cm)

Between Two Rivers Final Checklist



An-My Lê, American, born Vietnam 1960
Infantry Platoon, Alpha Company, 2003-2004
Gelatin silver print
26 1/2 × 38" (67.3 × 96.5 cm)



An-My Lê, American, born Vietnam 1960
Mechanized Assault, 2003-2004
Gelatin silver print
26 1/2 × 38" (67.3 × 96.5 cm)



An-My Lê, American, born Vietnam 1960
29 Palms, 2005
Two-channel 4K video projection from 35mm film (black and white, silent)
7 min., 30 sec.

Between Two Rivers Final Checklist

Gallery Four



An-My Lê, American, born Vietnam 1960

Offload, LCACs (Landing Craft Air Cushioned) and Tank, California, 2006

Inkjet print

40 × 56 1/2" (101.6 × 143.5 cm)



An-My Lê, American, born Vietnam 1960

Manning the Rail, USS Tortuga, Java Sea, 2010

Inkjet print

40 × 56 1/2" (101.6 × 143.5 cm)



An-My Lê, American, born Vietnam 1960

LC-130 Hercules and "Big Red," Amundsen-Scott South Pole Station, Antarctica, 2008

Inkjet print

40 × 56 1/2" (101.6 × 143.5 cm)

Between Two Rivers Final Checklist



An-My Lê, American, born Vietnam 1960
Ship Divers, USS New Hampshire, Arctic Seas, 2011
Inkjet print
40 × 56 1/2" (101.6 × 143.5 cm)



An-My Lê, American, born Vietnam 1960
Cigarette Break USS Chancellorsville, North Arabian Gulf, 2009
Inkjet print
40 × 56 1/2" (101.6 × 143.5 cm)



An-My Lê, American, born Vietnam 1960
Portrait Studio, USS Ronald Reagan, North Arabian Gulf, 2009
Inkjet print
40 × 56 1/2" (101.6 × 143.5 cm)

Between Two Rivers Final Checklist



An-My Lê, American, born Vietnam 1960

Fresh Water Wash-Down of Super Structure, USS Ronald Reagan, North Arabian Gulf, 2009

Inkjet print

40 × 56 1/2" (101.6 × 143.5 cm)



An-My Lê, American, born Vietnam 1960

Sailors on Liberty from USS Preble, Bamboo 2 Bar, Da Nang, Vietnam, 2011

Inkjet print

40 × 56 1/2" (101.6 × 143.5 cm)



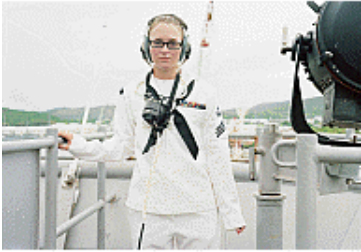
An-My Lê, American, born Vietnam 1960

Marine Corps Weapons Company (I), Earthquake Relief, Grand Goave, Haiti, 2010

Inkjet print

40 × 56 1/2" (101.6 × 143.5 cm)

Between Two Rivers Final Checklist



An-My Lê, American, born Vietnam 1960
Forward Lookout, USS Tortuga, Gulf of Thailand, 2010
Inkjet print
26 1/2 × 38" (67.3 × 96.5 cm)



An-My Lê, American, born Vietnam 1960
Boatswain's Mate Driving at the Helm, USS Nashville, Atlantic Ocean, 2009
Inkjet print
26 1/2 × 38" (67.3 × 96.5 cm)



An-My Lê, American, born Vietnam 1960
Line Shack Supervisor for EA-6B Prowler, USS Ronald Reagan, North Arabian Gulf, 2009
Inkjet print
26 1/2 × 38" (67.3 × 96.5 cm)

Between Two Rivers Final Checklist



An-My Lê, American, born Vietnam 1960

Aircraft Carrier Arresting Gear Mechanic, USS Ronald Reagan, North Arabian Gulf, 2009

Inkjet print

26 1/2 × 38" (67.3 × 96.5 cm)



An-My Lê, American, born Vietnam 1960

Clearing Tripwires, U.S. Marine Corps Explosive Ordnance Disposal Technician and Indonesian Combat Engineer, Karang Ketok Camp, Indonesia (I), 2010

Inkjet print

26 1/2 × 38" (67.3 × 96.5 cm)



An-My Lê, American, born Vietnam 1960

Clearing Tripwires, U.S. Marine Corps Explosive Ordnance Disposal Technician and Indonesian Combat Engineer, Karang Ketok Camp, Indonesia (II), 2010

Inkjet print

40 × 56 1/2" (101.6 × 143.5 cm)

Between Two Rivers Final Checklist



An-My Lê, American, born Vietnam 1960

Seaman on Bridge Rotation, USS Tortuga, South China Sea, 2010

Inkjet print

26 1/2 × 38" (67.3 × 96.5 cm)



An-My Lê, American, born Vietnam 1960

Ordnance Handlers, USS Ronald Reagan, 2009

Inkjet print

26 1/2 × 38" (67.3 × 96.5 cm)



An-My Lê, American, born Vietnam 1960

Small Arms Target Practice, USS Peleliu, Pacific Ocean, 2006

Inkjet print

40 × 56 1/2" (101.6 × 143.5 cm)

Between Two Rivers Final Checklist



An-My Lê, American, born Vietnam 1960

Patient Admission, Naval Hospital Ship USNS Mercy, Qui Nhon, Vietnam, 2009

Inkjet print

40 × 56 1/2" (101.6 × 143.5 cm)



An-My Lê, American, born Vietnam 1960

Commanding Officer of the USNS Safeguard and Vietnamese Military Officers, Da Nang, Vietnam, 2011

Inkjet print

40 × 56 1/2" (101.6 × 143.5 cm)



An-My Lê, American, born Vietnam 1960

Planning for Flooding Emergencies, Marine Air-Ground Task Force, Mafi Village, Ghana, 2010

Inkjet print

40 × 56 1/2" (101.6 × 143.5 cm)

Between Two Rivers Final Checklist

Gallery Five



An-My Lê, American, born Vietnam 1960

Fourteen Views, 2023

Fourteen wallpaper and wood panels

Each panel: 123 1/2 × 57" (313.7 × 144.8 cm)

Installation: approx. 10 ft × 34 ft × 7 ft (304.8 × 1036.3 × 213.4 cm)

The Museum of Modern Art, New York. Acquired with the support of the Contemporary Arts Council of The Museum of Modern Art, and the Carol and David Appel Family Fund in honor of Roxana Marcoci

Gallery Six

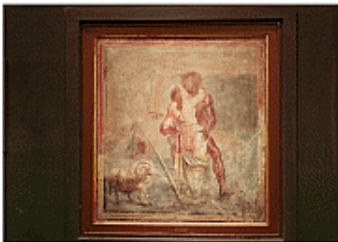


An-My Lê, American, born Vietnam 1960

Trompe L'Oeil, The National Archeological Museum of Naples, 2016

Vinyl wallpaper

155 × 132 1/2" (393.7 × 336.6 cm)



An-My Lê, American, born Vietnam 1960

Polyphemus and Galatea, (from Pompeii, House of the Painted Capitals),

The National Archeological Museum of Naples, 2016

Inkjet print

36 3/8 × 33 3/4" (92.4 × 85.7 cm)

Between Two Rivers Final Checklist



An-My Lê, American, born Vietnam 1960

Satyr and Nymph,(from Pompeii), The National Archeological Museum of Naples, 2016

Inkjet print

26 1/8 × 26" (66.4 × 66 cm)



An-My Lê, American, born Vietnam 1960

Erotic Scene, (from Pompeii, House of Caecilius Jocundus), The National Archeological Museum of Naples, 2016

Inkjet print

24 3/4 × 22 1/2" (62.9 × 57.2 cm)



An-My Lê, American, born Vietnam 1960

Erotic Scene, (from the Lupanar of Pompeii), The National Archeological Museum of Naples, 2016

Inkjet print

22 1/2 × 19 3/8" (57.2 × 49.2 cm)

Between Two Rivers Final Checklist



An-My Lê, American, born Vietnam 1960

00:02:26, Someone Else's War, (Gangbang Girl #26), 2016-present

Cotton and embroidery floss

44 × 56" (111.8 × 142.2 cm)



An-My Lê, American, born Vietnam 1960

00:02:34, Someone Else's War, (Gangbang Girl #26), 2016-2023

Cotton and embroidery floss

44 × 56" (111.8 × 142.2 cm)



An-My Lê, American, born Vietnam 1960

00:03:52, Someone Else's War, (Gangbang Girl #26), 2022

Cotton and embroidery floss

11 3/8 × 15 1/4" (29 × 38.7 cm)

Between Two Rivers Final Checklist



An-My Lê, American, born Vietnam 1960

00:4:31, Someone Else's War (Gangbang Girl #26), 2022-2023

Cotton and embroidery floss

11 3/8 × 15 1/4" (29 × 38.7 cm)



An-My Lê, American, born Vietnam 1960

00:04:55, Someone Else's War, (Gangbang Girl #26), 2019-2021

Cotton and embroidery floss

11 3/8 × 15 1/4" (29 × 38.7 cm)



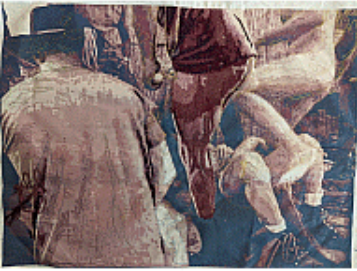
An-My Lê, American, born Vietnam 1960

00:05:00, Someone Else's War (Gangbang Girl #26), 2023

Cotton and embroidery floss

11 3/8 × 15 1/4" (29 × 38.7 cm)

Between Two Rivers Final Checklist

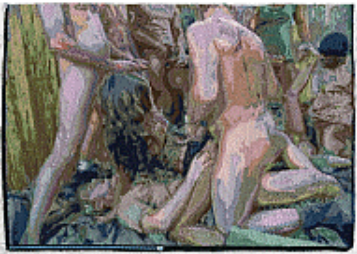


An-My Lê, American, born Vietnam 1960

00:14:33, Someone Else's War (Gangbang Girl #26), 2023

Cotton and embroidery floss

11 3/8 × 15 1/4" (29 × 38.7 cm)



An-My Lê, American, born Vietnam 1960

00:14:47, Someone Else's War (Gangbang Girl #26), 2022

Cotton and embroidery floss

11 3/8 × 15 1/4" (29 × 38.7 cm)

Gallery Seven



An-My Lê, American, born Vietnam 1960

Jefferson Davis Monument, Homeland Security Storage, New Orleans, Louisiana, 2017

Inkjet print

40 × 56 1/2" (101.6 × 143.5 cm)

Between Two Rivers Final Checklist



An-My Lê, American, born Vietnam 1960

Maroon, Film Set ("Free State of Jones"), Chicot State Park, Louisiana, 2015

Inkjet print

40 × 56 1/2" (101.6 × 143.5 cm)



An-My Lê, American, born Vietnam 1960

Cadets, Air Force Academy, Colorado Springs, Colorado, 2019

Inkjet print

40 × 56 1/2" (101.6 × 143.5 cm)



An-My Lê, American, born Vietnam 1960

Vaccination Site, Dodger Stadium, Los Angeles, California, 2021

Inkjet print

40 × 56 1/2" (101.6 × 143.5 cm)

Between Two Rivers Final Checklist



An-My Lê, American, born Vietnam 1960

High School Students, Fourth of July Celebration, New Orleans, Louisiana, 2017

Inkjet print

40 × 56 1/2" (101.6 × 143.5 cm)



An-My Lê, American, born Vietnam 1960

High School Student, Brooklyn, New York, 2022

Inkjet print

40 × 56 1/2" (101.6 × 143.5 cm)



An-My Lê, American, born Vietnam 1960

James S. Brady Press Briefing Room, The White House, Washington, DC, 2020

Inkjet print

40 × 56 1/2" (101.6 × 143.5 cm)

Between Two Rivers Final Checklist



An-My Lê, American, born Vietnam 1960

Cattle Drive at Perdiz Creek Ranch (Ranchers at Reservoir), Marfa, Texas, 2019

Inkjet print

40 × 56 1/2" (101.6 × 143.5 cm)



An-My Lê, American, born Vietnam 1960

Migrant Workers Harvesting Asparagus, Mendota, California, 2019

Inkjet print

40 × 56 1/2" (101.6 × 143.5 cm)



An-My Lê, American, born Vietnam 1960

Drainage Pump Station, New Orleans, Louisiana, 2016

Inkjet print

40 × 56 1/2" (101.6 × 143.5 cm)

Between Two Rivers Final Checklist



An-My Lê, American, born Vietnam 1960
Pinyon Crest, California, 2021
Inkjet print
40 × 56 1/2" (101.6 × 143.5 cm)



An-My Lê, American, born Vietnam 1960
Lutheran Church, Melville, Montana, 2019
Inkjet print
40 × 56 1/2" (101.6 × 143.5 cm)



An-My Lê, American, born Vietnam 1960
Restoration of J.M.W. Turner's Port Ruysdael, Yale Center for British Art, New Haven, Connecticut, 2018
Inkjet print
40 × 56 1/2" (101.6 × 143.5 cm)

Between Two Rivers Final Checklist



An-My Lê, American, born Vietnam 1960

High School Student Protesting Gun Violence, Washington Square Park,
New York City, 2018

Inkjet print

40 × 56 1/2" (101.6 × 143.5 cm)

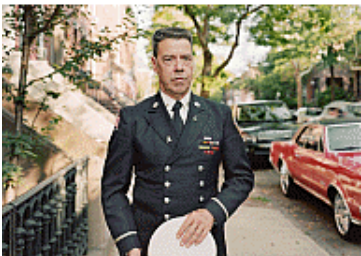


An-My Lê, American, born Vietnam 1960

Veterans/Extras, Film Set ("Free State of Jones"), Battle of Corinth, Bush,
Louisiana, 2015

Inkjet print

40 × 56 1/2" (101.6 × 143.5 cm)



An-My Lê, American, born Vietnam 1960

Retired Firefighter on 9/11, Brooklyn, New York, 2018

Inkjet print

40 × 56 1/2" (101.6 × 143.5 cm)

Between Two Rivers Final Checklist



An-My Lê, American, born Vietnam 1960
Rio Grande, US-Mexico Border, 2019
Inkjet print
40 × 56 1/2" (101.6 × 143.5 cm)



An-My Lê, American, born Vietnam 1960
Cars along the Rio Grande, US-Mexico Border, Ojinaga, Mexico, 2019
Inkjet print
40 × 56 1/2" (101.6 × 143.5 cm)



An-My Lê, American, born Vietnam 1960
US Customs and Border Protection Officer, Presidio-Ojinaga International
Bridge, Presidio, Texas, 2019
Inkjet print
40 × 56 1/2" (101.6 × 143.5 cm)

Between Two Rivers Final Checklist



An-My Lê, American, born Vietnam 1960
Mexico Customs and Border Protection Officer, Presidio-Ojinaga
International Bridge, Ojinaga, Mexico, 2019
Inkjet print
40 × 56 1/2" (101.6 × 143.5 cm)



An-My Lê, American, born Vietnam 1960
Pinto Canyon (II), Chinati Mountains, Texas, 2019
Inkjet print
40 × 56 1/2" (101.6 × 143.5 cm)



An-My Lê, American, born Vietnam 1960
Andrew Jackson Statue, Lafayette Square, President's Park, Washington
DC, 2020
Inkjet print
40 × 56 1/2" (101.6 × 143.5 cm)

Between Two Rivers Final Checklist



An-My Lê, American, born Vietnam 1960

Acting Secretaries of War Hallway, the Pentagon, Arlington, Virginia, 2019

Inkjet print

40 × 56 1/2" (101.6 × 143.5 cm)



An-My Lê, American, born Vietnam 1960

Naval Hospital Ship USNS Comfort, Verrazano Bridge, Brooklyn, New York, 2020

Inkjet Print

40 × 56 1/2" (101.6 × 143.5 cm)



An-My Lê, American, born Vietnam 1960

Lubavitch Chassidim Family Watching the Solar Eclipse, August 21, Brooklyn, New York, 2017

Inkjet print

40 × 56 1/2" (101.6 × 143.5 cm)

Between Two Rivers Final Checklist



An-My Lê, American, born Vietnam 1960
US Postal Worker, Brooklyn, New York, 2019
Inkjet print
40 × 56 1/2" (101.6 × 143.5 cm)



An-My Lê, American, born Vietnam 1960
Radio Antennas, the Very Large Array, Socorro, New Mexico, 2018
Inkjet print
40 × 56 1/2" (101.6 × 143.5 cm)



An-My Lê, American, born Vietnam 1960
Trump Presidency Oval Office, Saturday Night Live, NBC Studios, New York City, 2018
Inkjet print
40 × 56 1/2" (101.6 × 143.5 cm)

Between Two Rivers Final Checklist



An-My Lê, American, born Vietnam 1960

High School Students Protesting Gun Violence, Washington Square Park,
New York City, 2018

Inkjet print

40 × 56 1/2" (101.6 × 143.5 cm)



An-My Lê, American, born Vietnam 1960

Land Scars from the Trans-Pecos Pipeline, Marfa, Texas, 2019

Inkjet print

40 × 56 1/2" (101.6 × 143.5 cm)



An-My Lê, American, born Vietnam 1960

General P.G.T. Beauregard Monument, New Orleans, Louisiana, 2016

Inkjet print

40 × 56 1/2" (101.6 × 143.5 cm)

Between Two Rivers Final Checklist



An-My Lê, American, born Vietnam 1960

Battle of Corinth, Film Set ("Free State of Jones"), Bush, Louisiana, 2015

Inkjet print

40 × 56 1/2" (101.6 × 143.5 cm)



An-My Lê, American, born Vietnam 1960

Graffiti, November 9, New Orleans, Louisiana, 2016

Inkjet print

40 × 56 1/2" (101.6 × 143.5 cm)



An-My Lê, American, born Vietnam 1960

General Robert E. Lee and General P.G.T. Beauregard Monuments,

Homeland Security Storage, New Orleans, Louisiana, 2017

Inkjet print

40 × 56 1/2" (101.6 × 143.5 cm)

Between Two Rivers Final Checklist



An-My Lê, American, born Vietnam 1960

Friends by the Rio Grande at the US-Mexico Border, Ojinaga, Mexico, 2019

Inkjet print

40 × 56 1/2" (101.6 × 143.5 cm)



An-My Lê, American, born Vietnam 1960

Family under the Presidio-Ojinaga International Bridge, Rio Grande,
Texas-Mexico Border, 2019

Inkjet print

40 × 56 1/2" (101.6 × 143.5 cm)



An-My Lê, American, born Vietnam 1960

Citrus Tree, Fowler, California, 2019

Inkjet print

40 × 56 1/2" (101.6 × 143.5 cm)

Between Two Rivers Final Checklist



An-My Lê, American, born Vietnam 1960

Migrant Workers Pruning Pomegranate Trees, Mendota, California, 2018

Inkjet print

40 × 56 1/2" (101.6 × 143.5 cm)



An-My Lê, American, born Vietnam 1960

Citrus Tree with Cross-Pollination Shield, Fresno, California, 2019

Inkjet print

40 × 56 1/2" (101.6 × 143.5 cm)

Gallery Eight



An-My Lê, American, born Vietnam 1960

Maintenance Loader, 2006

Inkjet print

30 × 42" (76.2 × 106.7 cm)

Between Two Rivers Final Checklist



An-My Lê, American, born Vietnam 1960
Parts Depot, 2006
Inkjet print
30 × 42" (76.2 × 106.7 cm)



An-My Lê, American, born Vietnam 1960
Mill II, 2006
Inkjet print
30 × 42" (76.2 × 106.7 cm)



An-My Lê, American, born Vietnam 1960
Mill III, 2006
Inkjet print
30 × 42" (76.2 × 106.7 cm)

Between Two Rivers Final Checklist



An-My Lê, American, born Vietnam 1960
Truck Load Out, 2006
Inkjet print
30 × 42" (76.2 × 106.7 cm)



An-My Lê, American, born Vietnam 1960
Surge Tower and Conveyors, 2006
Inkjet print
30 × 42" (76.2 × 106.7 cm)



An-My Lê, American, born Vietnam 1960
Pit Berm, 2006
Inkjet print
30 × 42" (76.2 × 106.7 cm)

Between Two Rivers Final Checklist



An-My Lê, American, born Vietnam 1960
Shoot III, 2006
Inkjet print
30 × 42" (76.2 × 106.7 cm)



An-My Lê, American, born Vietnam 1960
Truck Load Out (River), 2006
Inkjet print
30 × 42" (76.2 × 106.7 cm)



An-My Lê, American, born Vietnam 1960
Mill from River, 2006
Inkjet print
30 × 42" (76.2 × 106.7 cm)

Between Two Rivers Final Checklist



An-My Lê, American, born Vietnam 1960
Mill Silos III, 2007
Inkjet print
30 × 42" (76.2 × 106.7 cm)



An-My Lê, American, born Vietnam 1960
Beach Parts, 2007
Inkjet print
30 × 42" (76.2 × 106.7 cm)



An-My Lê, American, born Vietnam 1960
Excavator, 2007
Inkjet print
30 × 42" (76.2 × 106.7 cm)

Between Two Rivers Final Checklist



An-My Lê, American, born Vietnam 1960
Fixed Stackers, 2006
Inkjet print
30 × 42" (76.2 × 106.7 cm)



An-My Lê, American, born Vietnam 1960
Hudson River I, 2006
Inkjet print
30 × 42" (76.2 × 106.7 cm)



An-My Lê, American, born Vietnam 1960
Conveyor I, 2006
Inkjet print
30 × 42" (76.2 × 106.7 cm)

Between Two Rivers Final Checklist



An-My Lê, American, born Vietnam 1960

Mill IV, 2006

Inkjet print

30 × 42" (76.2 × 106.7 cm)