

## Judd

The Museum of Modern Art, New York March 01, 2020-January 09, 2021  
11w53, On View, 6th Floor

---

## Loggia



DONALD JUDD (American, 1928–1994)  
Untitled  
c. 1960  
Oil on canvas  
70 x 47 3/4" (177.8 x 121.3 cm)  
National Gallery of Canada, Ottawa



DONALD JUDD (American, 1928–1994)  
Untitled  
1961  
Acrylic and sand on board  
72 x 47 7/8" (183 x 121.7 cm)  
The Museum of Modern Art, New York. Gift of Leo Castelli



DONALD JUDD (American, 1928–1994)

Untitled

1961

Oil on board mounted on wood, with inset tinned steel baking pan

48 1/8 x 36 1/8 x 4" (122.2 x 91.8 x 10.2 cm)

The Museum of Modern Art, New York. Gift of Barbara Rose



DONALD JUDD (American, 1928–1994)

Untitled (11-L)

1961–69

One from a series of twenty-six woodcuts

composition (irreg.): 26 3/16 x 16" (66.5 x 40.6 cm); sheet: 30 5/8 x 22 1/16"

(77.8 x 56 cm)

The Museum of Modern Art, New York. Gift of Philip Johnson



DONALD JUDD (American, 1928–1994)

Untitled (2-L)

1961–69

One from a series of twenty-six woodcuts

composition: 25 3/4 x 15 15/16" (65.5 x 40.5 cm); sheet: 30 1/2 x 21 15/16"

(77.5 x 55.8 cm)

The Museum of Modern Art, New York. Gift of Edgar B. Howard through the Associates



DONALD JUDD (American, 1928–1994)

Untitled

1962

Cadmium red light oil on liquitex and sand on Masonite with yellow

48 x 96 x 2 1/2" (121.9 x 243.8 x 6.4 cm)

San Francisco Museum of Modern Art

Bequest of Phyllis C. Wattis



DONALD JUDD (American, 1928–1994)  
Untitled  
1963  
Cadmium red light oil and black oil on wood with galvanized iron and aluminum  
76 x 96 x 11 3/4" (193 x 243.8 x 29.8 cm)  
Collezione Prada, Milano



DONALD JUDD (American, 1928–1994)  
Untitled  
1963  
Purple lacquer on aluminum, light cadmium red oil on wood  
5 1/8 x 32 5/8 x 5 1/8" (13 x 82.8 x 13 cm)  
Collection Martin Z. Margulies



DONALD JUDD (American, 1928–1994)  
Untitled  
1963/1975  
Cadmium red light oil on wood and purple lacquer on aluminum  
48 x 83 x 48" (121.9 x 210.8 x 121.9 cm)  
National Gallery of Canada, Ottawa



DONALD JUDD (American, 1928–1994)  
Untitled  
1963  
Cadmium red light oil on wood with iron pipe  
22 1/8 x 45 3/8 x 30 1/2" (56.2 x 115.3 x 77.5 cm)  
Hirshhorn Museum and Sculpture Garden, Smithsonian Institution,  
Washington, DC, Joseph H. Hirshhorn Purchase Fund, 1991



DONALD JUDD (American, 1928–1994)  
Untitled  
1963  
Cadmium red light oil on wood  
20 3/4 × 16 3/4 × 2" (52.7 × 42.5 × 5.1 cm)  
Judd Foundation



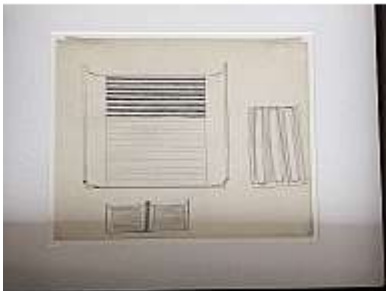
DONALD JUDD (American, 1928–1994)  
Untitled  
1963  
Cadmium red light oil on wood  
20 3/4 × 16 3/4 × 2" (52.7 × 42.5 × 5.1 cm)  
Judd Foundation



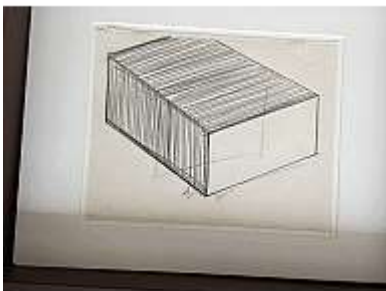
DONALD JUDD (American, 1928–1994)  
Untitled  
1963  
Cadmium red light oil on wood with violet Plexiglas  
19 1/2 × 48 1/2 × 48 1/2" (49.5 × 123.2 × 123.2 cm)  
National Gallery of Art



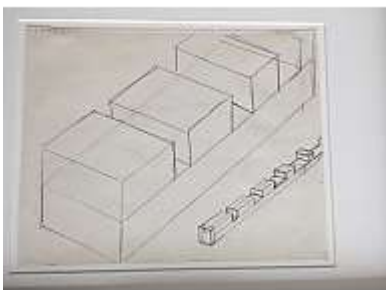
DONALD JUDD (American, 1928–1994)  
*Drawing for a floor piece (cf. DSS 39)*  
1963  
Pencil on paper  
Sheet: 11 × 14" (27.9 × 35.6 cm)  
Kunstmuseum Basel



DONALD JUDD (American, 1928–1994)  
*Drawing for wall pieces (cf. DSS 40)*  
1963  
Pencil on paper  
Sheet: 11 × 14" (27.9 × 35.6 cm)  
Kunstmuseum Basel



DONALD JUDD (American, 1928–1994)  
*Drawing for a floor piece*  
1964  
Pencil on paper  
Sheet: 11 × 14" (27.9 × 35.5 cm)  
Kunstmuseum Basel



DONALD JUDD (American, 1928–1994)  
*Drawing for wall pieces (cf. DSS 98)*  
1964-65  
Pencil on paper  
Sheet: 11 × 14" (27.9 × 35.5 cm)  
Kunstmuseum Basel



DONALD JUDD (American, 1928–1994)  
Untitled  
1964  
Light cadmium red enamel on galvanized iron  
15 1/2 × 93 × 78" (39.4 × 236.2 × 198.1 cm)  
Private Collection, courtesy David Zwirner



DONALD JUDD (American, 1928–1994)  
Untitled  
1964  
Orange pebbled Plexiglas and hot-rolled steel  
20 × 45 3/8 × 31" (50.8 × 115.3 × 78.7 cm)  
Stephen Flavin, Garrison



DONALD JUDD (American, 1928–1994)  
Untitled  
1964  
Brass and blue lacquer on galvanized iron  
40 1/2 × 84 × 6 3/4" (102.9 × 213.4 × 17.1 cm)  
National Gallery of Canada, Ottawa



DONALD JUDD (American, 1928–1994)  
*To Susan Buckwalter*  
1965  
Blue lacquer on aluminum and galvanized iron  
30 × 141 × 30" (76.2 × 358.1 × 76.2 cm)  
The Doris and Donald Fisher Collection at the San Francisco Museum of Modern Art



DONALD JUDD (American, 1928–1994)

Untitled

1965

Galvanized iron

Seven units, each 9 x 40 x 30" (22.8 x 101.6 x 76.2 cm), installed vertically with 9" (22.8 cm) intervals. Overall: 117 3/16 x 40 x 30" (297.7 x 101.6 x 76.2 cm)

Moderna Museet, Stockholm



DONALD JUDD (American, 1928–1994)

Untitled

1966

Turquoise paint on aluminum

10 units, each: 48 x 120 x 6 5/8" (121.9 x 304.8 x 16.8 cm), with 6" (15.2 cm) intervals.

Overall: 48 x 120 x 120" (121.9 x 304.8 x 304.8 cm)

Whitney Museum of American Art, New York. Gift of Howard and Jean Lipman



DONALD JUDD (American, 1928–1994)

Untitled

1967 (refabricated 1973-75)

Lacquer on galvanized iron

14 5/8" x 6' 4 5/8" x 25 5/8" (37.2 x 194.6 x 65.1 cm)

The Museum of Modern Art, New York. Gift of Philip Johnson (by exchange)



DONALD JUDD (American, 1928–1994)

Untitled

1967

Lacquer on galvanized iron

Twelve units, each 9 x 40 x 31" (22.8 x 101.6 x 78.7 cm), installed vertically with 9" (22.8 cm) intervals

The Museum of Modern Art, New York. Helen Acheson Bequest (by exchange) and gift of Joseph Helman



DONALD JUDD (American, 1928–1994)  
Untitled  
1968  
Brass  
22 x 48 1/4 x 36", 240 lb. (55.9 x 122.6 x 91.4 cm, 108.9 kg)  
The Museum of Modern Art, New York. Gift of Philip Johnson



DONALD JUDD (American, 1928–1994)  
Untitled  
1968  
Stainless steel and yellow Plexiglas  
Ten units, each 9 x 40 x 31" (22.8 x 101.6 x 78.7 cm), with 9" (22.8 cm) intervals.  
Froehlich Collection, Stuttgart



DONALD JUDD (American, 1928–1994)  
Untitled  
1968  
Stainless steel and amber Plexiglas  
Six units, each 34 x 34 x 34" (86.4 x 86.4 x 86.4 cm), with 8" (20.3 cm) intervals.  
Overall: 34 x 244 x 34" (86.4 x 619.8 x 86.4 cm)  
Layton Art Collection Inc., Purchase, at the Milwaukee Art Museum



DONALD JUDD (American, 1928–1994)  
Untitled  
1969  
Cold-rolled steel  
Six units, each 39 3/8 x 39 3/8 x 39 3/8" (100 x 100 x 100 cm), with 9 3/4" (25 cm) intervals.  
Overall: 39 3/8 x 285 1/2 x 39 3/8" (100 x 725.2 x 100 cm)  
Kunstmuseum Basel





DONALD JUDD (American, 1928–1994)  
Untitled  
1969  
Perforated 12-gauge cold-rolled steel  
8 × 120 × 66" (20.3 × 304.8 × 167.6 cm)  
Museum für Moderne Kunst Frankfurt



DONALD JUDD (American, 1928–1994)  
Untitled  
1970  
Purple lacquer on aluminum and light cadmium red enamel on cold-rolled steel  
8 1/4 × 161 × 8" (21 × 408.9 × 20.3 cm)  
Kunstmuseum Basel



DONALD JUDD (American, 1928–1994)  
Untitled  
1969  
Copper  
Ten units, each 9 x 40 x 31" (22.8 x 101.6 x 78.7 cm), with 9" (22.8 cm) intervals.  
Overall: 171 x 40 x 31" (433.2 x 101.6 x 78.7 cm)  
Solomon R. Guggenheim Museum, New York, Panza Collection, 1991



DONALD JUDD (American, 1928–1994)  
Untitled  
1969  
Clear anodized aluminum and blue Plexiglas  
Four units, each 48 x 60 x 60" (121.9 x 152.4 x 152.4 cm), with 12" (30.5 cm) intervals. Overall: 48 x 276 x 60" (121.9 x 701 x 152.4 cm)  
Saint Louis Art Museum



DONALD JUDD (American, 1928–1994)  
Untitled  
1970  
Clear anodized and purple anodized aluminum  
8 1/4 x 253 x 8" (21 x 642.6 x 20.3 cm)  
Dallas Museum of Art, fractional gift of The Rachofsky Collection



DONALD JUDD (American, 1928–1994)  
Untitled  
1973  
Plywood  
6 units, each: 72 x 143 x 72" (182.9 x 363.2 x 182.9 cm) with 12" intervals.  
Overall: 72 x 585 x 72" (182.9 x 1485.9 x 182.9 cm).  
National Gallery of Canada, Ottawa



DONALD JUDD (American, 1928–1994)  
Untitled  
1973  
Brass and blue Plexiglas  
33 x 68 x 48" (83.8 x 172.7 x 121.9 cm)  
Solomon R. Guggenheim Museum, New York, Panza Collection, 1991



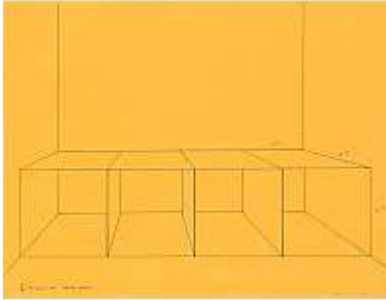
DONALD JUDD (American, 1928–1994)  
Untitled  
1976-1977  
Stainless steel  
21 units, each 4 x 27 x 23" (10.2 x 68.6 x 58.4 cm), with 13.5" (34.3 cm) intervals.  
Overall: 4 x 108 x 230" (10.2 x 274.3 x 584.2 cm)  
Collection of the Des Moines Art Center. Purchased with funds from the Coffin Fine Arts Trust; Nathan Emory Coffin



DONALD JUDD (American, 1928–1994)  
Untitled  
1976  
Galvanized iron  
10 x 72 x 26" (25.4 x 182.9 x 66 cm)  
Glenstone Museum, Potomac, Maryland



DONALD JUDD (American, 1928–1994)  
Untitled  
1977  
Stainless steel with red Plexiglas  
19 11/16 x 39 3/8 x 19 11/16" (50 x 100 x 50 cm)  
Artworkers Retirement Society



DONALD JUDD (American, 1928–1994)

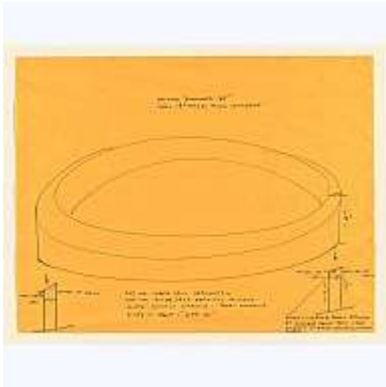
Untitled

1970

Felt-tip pen on colored paper

17 1/8 x 22" (43.5 x 55.9 cm)

The Museum of Modern Art, New York. The Judith Rothschild Foundation Contemporary Drawings Collection Gift (purchase, and gift, in part, of The Eileen and Michael Cohen Collection)



DONALD JUDD (American, 1928–1994)

Untitled

1971

Felt-tip pen on colored paper

17 1/8 x 22" (43.6 x 55.9 cm)

The Museum of Modern Art, New York. Gift of Philip Johnson



DONALD JUDD (American, 1928–1994)

Untitled

1974

Pencil on paper

Sheet: 22 3/4 x 30 1/8" (57.8 x 76.5 cm)

The Museum of Contemporary Art, Los Angeles. Gift of Councilman Joel Wachs



DONALD JUDD (American, 1928–1994)  
Untitled  
1980  
Red and blue anodized aluminum  
8 1/4 × 253 × 8" (21 × 642.6 × 20.3 cm)  
The Chinati Foundation



DONALD JUDD (American, 1928–1994)  
Untitled  
1984  
Enameled aluminum  
11 13/16 × 141 3/4 × 11 13/16" (30 × 360 × 30 cm)  
Hausmaninger Collection



DONALD JUDD (American, 1928–1994)  
Untitled  
1984  
Aluminum with blue over black acrylic sheets  
Six units, each 19 11/16 × 39 3/8 × 19 11/16" (50 × 100 × 50 cm), installed vertically with 9 13/16" (25 cm) intervals. Overall: 166 3/4 × 39 3/8 × 19 11/16" (423.6 × 100 × 50 cm)  
Whitney Museum of American Art, New York. Purchase, with funds from the Brown Foundation, Inc. in memory of Margaret Root Brown



DONALD JUDD (American, 1928–1994)  
Untitled  
1984  
Enameled aluminum  
11 13/16 × 35 7/16 × 11 13/16" (30 × 90 × 30 cm)  
Addison Gallery of American Art, Phillips Academy, Andover, MA. Gift of Frank Stella



DONALD JUDD (American, 1928–1994)  
Untitled  
1986  
Enameled aluminum  
11 13/16 x 141 3/4 x 11 13/16" (30 x 360 x 30 cm)  
Annemarie Verna Gallery, Zurich



DONALD JUDD (American, 1928–1994)  
Untitled  
1986  
Aluminum with red Plexiglas  
Six units, each 19 11/16 x 39 3/8 x 19 11/16" (50 x 100 x 50 cm), installed vertically with 9 13/16" (25 cm) intervals.  
Private collection, North Haven



DONALD JUDD (American, 1928–1994)  
Untitled  
1986  
Douglas Fir plywood and orange Plexiglas  
6 units, each: 39 3/8 x 39 3/8 x 19 11/16" (100 x 100 x 50 cm) with 19 11/16" (50 cm) intervals. Overall: 98 1/2 x 157 5/8 x 29 1/2" (250.2 x 400.4 x 74.9)  
Marielouise Hessel Collection, Hessel Museum of Art, Center for Curatorial Studies, Bard College, Annandale-on-Hudson, New York



DONALD JUDD (American, 1928–1994)  
Untitled  
1987  
Enameled aluminum  
11 13/16 x 94 1/2 x 11 13/16" (30 x 240 x 30 cm)  
Maxine and Stuart Frankel Foundation for Art



DONALD JUDD (American, 1928–1994)  
Untitled  
1988  
Portfolio of ten woodcuts  
composition (see child records): dimensions vary; sheet (each): 23 5/8 x 31 1/2" (60 x 80 cm)  
The Museum of Modern Art, New York. The Associates Fund



DONALD JUDD (American, 1928–1994)  
Untitled  
1989  
Anodized aluminum clear  
39 3/8 x 78 3/4 x 78 3/4" (100 x 200 x 200 cm)  
Glenstone Museum, Potomac, Maryland



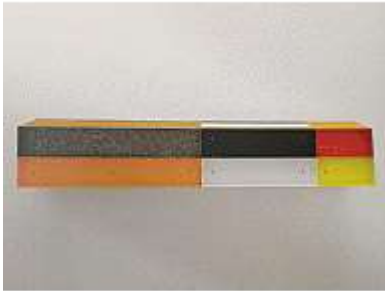
DONALD JUDD (American, 1928–1994)  
Untitled  
1989  
Anodized aluminum clear and blue with blue acrylic sheet  
39 3/8 x 78 3/4 x 78 3/4" (100 x 200 x 200 cm)  
Glenstone Museum, Potomac, Maryland



DONALD JUDD (American, 1928–1994)  
Untitled  
1989  
Anodized aluminum clear and amber acrylic sheet  
39 3/8 x 78 3/4 x 78 3/4" (100 x 200 x 200 cm)  
Glenstone Museum, Potomac, Maryland



DONALD JUDD (American, 1928–1994)  
Untitled  
1989  
Anodized aluminum clear and amber and black acrylic  
39 3/8 x 78 3/4 x 78 3/4" (100 x 200 x 200 cm)  
Glenstone Museum, Potomac, Maryland



DONALD JUDD (American, 1928–1994)  
Untitled  
1989  
Enameled aluminum  
11 13/16 x 70 7/8 x 11 13/16" (30 x 180 x 30 cm)  
Private collection, Belgium



DONALD JUDD (American, 1928–1994)  
Untitled  
1990  
Black anodized aluminum with clear Plexiglas  
Ten units, each 9 x 40 x 31" (22.8 x 101.6 x 78.7 cm), with 9" (22.8 cm) intervals.  
Overall: 171 x 40 x 31" (433.2 x 101.6 x 78.7 cm)  
Kravis Collection



DONALD JUDD (American, 1928–1994)  
Untitled  
1991  
Enameled aluminum  
59" x 24' 7 1/4" x 65" (150 x 750 x 165 cm)  
The Museum of Modern Art, New York. Bequest of Richard S. Zeisler and gift of Abby Aldrich Rockefeller (both by exchange) and gift of Kathy Fuld, Agnes Gund, Patricia Cisneros, Doris Fisher, Mimi Haas, Marie-Josée and Henry R. Kravis, and Emily Spiegel





DONALD JUDD (American, 1928–1994)

Untitled

1991

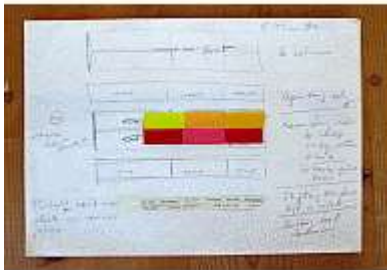
Douglas fir plywood

39 3/8 × 39 3/8 × 19 11/16" (100 × 100 × 50 cm)

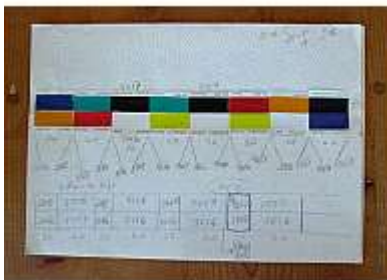
Collection of Constance R. Caplan, Baltimore



DONALD JUDD (American, 1928–1994)  
Untitled  
1984  
Color samples from RAL chart and pencil on paper  
Sheet: 13 1/4 x 9 3/8" (33.7 x 23.8 cm)  
Judd Foundation



DONALD JUDD (American, 1928–1994)  
Untitled  
1984  
Color samples from RAL chart and pencil on paper  
Sheet: 9 3/8 x 13 1/4" (23.8 x 33.7 cm)  
Judd Foundation



DONALD JUDD (American, 1928–1994)  
Untitled  
1986  
Color samples from RAL chart and pencil on paper  
Sheet: 9 3/8 x 13 1/4" (23.8 x 33.7 cm)  
Judd Foundation



DONALD JUDD (American, 1928–1994)

Untitled

1992

Cor-ten steel and green, yellow, purple, ivory, orange, and black acrylic sheets

6 units, each: 19 11/16 × 39 3/8 × 19 11/16" (50 × 100 × 50 cm) with 19 11/16"

(50 cm) intervals

Artworkers Retirement Society



DONALD JUDD (American, 1928–1994)

Untitled

1968

Painted steel

48 3/8" x 10' x 10' 1" (122.8 x 305 x 307.6 cm)

The Museum of Modern Art, New York. Mr. and Mrs. Simon Askin Fund