

MoMA PS1

Niki de Saint Phalle: Structures for Life

MoMA PS1, March 11, 2021 - September 06, 2021



NIKI DE SAINT PHALLE (French and American, 1930–2002)

Clarice Again

1966–1967

Polyester and polyurethane paint

82 × 65 × 63" (208.3 × 165.1 × 160 cm)

Private collection



NIKI DE SAINT PHALLE (French and American, 1930–2002)

Buste

c. 1967

Painted plaster

4 1/2 × 6 1/8 × 3 15/16" (11.4 × 15.6 × 10 cm)

Courtesy Salon 94, New York



NIKI DE SAINT PHALLE (French and American, 1930–2002)

Sphinx / Sphinge (1ere version)

1969

Painted polyester

11 5/8 × 16 1/8 × 10 5/8" (29.5 × 41 × 27 cm)

Private collection



NIKI DE SAINT PHALLE (French and American, 1930–2002)

JEAN TINGUELY (Swiss, 1925–1991)

Études pour Nana Maison

c. 1969

Black marker on paper

16 1/4 × 11 11/16" (41.3 × 29.7 cm)

Private collection

Niki de Saint Phalle: Structures for Life

MoMA PS1, March 11, 2021 - September 06, 2021



NIKI DE SAINT PHALLE (French and American, 1930–2002)
What Is Now Known Was Once Only Imagined
1979

Offset-printed poster
17 15/16 × 24" (45.6 × 61 cm)
Courtesy Salon 94, New York



NIKI DE SAINT PHALLE (French and American, 1930–2002)
Golem
1991

Two lithographs and one book in folio, with photographs by Leonardo Bezzola; published by Bätterkinden
16 1/8 × 16 15/16" (41 × 43 cm)
Courtesy Salon 94, New York



RICO WEBER (Swiss, 1942 – 2004)

Golem
1972
Video (color, sound)
1 hrs., 17 min., 37 sec.

Courtesy État de Fribourg Suisse / MAHF



NIKI DE SAINT PHALLE (French and American, 1930–2002)
Maquette pour le Dragon de Knokke

c. 1973
Painted polyester
18 1/2 × 51 15/16 × 48 1/16" (47 × 132 × 122 cm)
Collection Bart Versluys



RICO WEBER (Swiss, 1942 – 2004)

Construction of Dragon de Knokke
1973

Video (color, no sound)
53 min., 51 sec.
Courtesy État de Fribourg Suisse / MAHF

Niki de Saint Phalle: Structures for Life

MoMA PS1, March 11, 2021 - September 06, 2021



NIKI DE SAINT PHALLE (French and American, 1930–2002)

Coeur sur base metal

1981

Painted clay on metal base

9 5/8 × 6 1/8 × 4 3/4" (24.4 × 15.6 × 12.1 cm)

Niki Charitable Art Foundation, Santee



NIKI DE SAINT PHALLE (French and American, 1930–2002)

Crane sur dessin Jean Tinguely

1981

Painted clay, black pencil, and paint on sketchbook

11 13/16 × 8 1/4 × 2 15/16" (30 × 21 × 7.5 cm)

Niki Charitable Art Foundation, Santee



NIKI DE SAINT PHALLE (French and American, 1930–2002)

Serpent spirale sur base metal

1981

Painted plaster on metal base

14 × 6 5/16 × 6 5/16" (35.6 × 16 × 16 cm)

Niki Charitable Art Foundation, Santee



NIKI DE SAINT PHALLE (French and American, 1930–2002)

Petit rossignol

1981–1982

Painted polyster on metal base

9 13/16 × 9 13/16 × 6 5/16" (24.9 × 24.9 × 16 cm)

Niki Charitable Art Foundation, Santee



NIKI DE SAINT PHALLE (French and American, 1930–2002)

Sirène

c. 1981

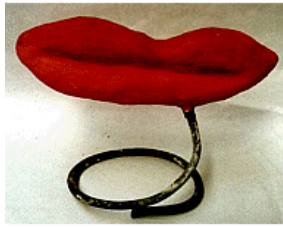
Painted clay on chipboard base

4 5/16 × 13 3/8 × 4 3/4" (11 × 34 × 12.1 cm)

Niki Charitable Art Foundation, Santee

Niki de Saint Phalle: Structures for Life

MoMA PS1, March 11, 2021 - September 06, 2021



NIKI DE SAINT PHALLE (French and American, 1930–2002)

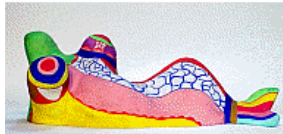
Levres rouges sur spirale en metal

c. 1981

Painted plaster on metal base

6 7/8 × 9 13/16 × 4 3/4" (17.5 × 24.9 × 12.1 cm)

Niki Charitable Art Foundation, Santee



NIKI DE SAINT PHALLE (French and American, 1930–2002)

Sirène tête verte

c. 1981

Painted polyester

6 1/2 × 19 11/16 × 7 1/16" (16.5 × 50 × 17.9 cm)

Niki Charitable Art Foundation, Santee



NIKI DE SAINT PHALLE (French and American, 1930–2002)

Fontaine Stravinsky

1982

Drawing on serigraph

15 9/16 × 14 3/16" (39.5 × 36 cm)

Niki Charitable Art Foundation, Santee



NIKI DE SAINT PHALLE (French and American, 1930–2002)

Cher Igor

1983

Lithograph

19 11/16 × 25 9/16" (50 × 65 cm)

Niki Charitable Art Foundation, Santee



NIKI DE SAINT PHALLE (French and American, 1930–2002)

Lézard house ou École maternelle

1974

Painted polyester

27 9/16 × 8 1/4 × 13 3/8" (70 × 21 × 34 cm)

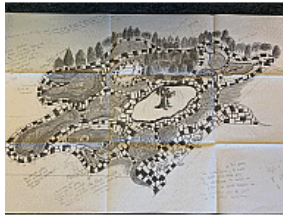
Courtesy Salon 94, New York

Niki de Saint Phalle: Structures for Life

MoMA PS1, March 11, 2021 - September 06, 2021



NIKI DE SAINT PHALLE (French and American, 1930–2002)
Maquette for "Janus Head" playground, Los Angeles
c. 1980
Wire mesh and painted plaster
13 × 10 5/8 × 7 1/16" (33 × 27 × 17.9 cm)
Niki Charitable Art Foundation, Santee



NIKI DE SAINT PHALLE (French and American, 1930–2002)
Unrealized park environment planned for the Long Island Schneider's Children's Hospital
1986
Xerox
50 1/2 × 24" (128.3 × 61 cm)
Niki Charitable Art Foundation, Santee



NIKI DE SAINT PHALLE (French and American, 1930–2002)
Maquette for Gila Monster
1995
Painted polyester and aluminum
16 1/2 × 42 × 41" (41.9 × 106.7 × 104.1 cm)
Mingei International Museum. Gift of Jay and Cindy Pritzker



GIULIO PIETROMARCHI (Italian, born 1963)
Gila: A Dragon
1997
Video (color, sound)
11 min., 37 sec.
Niki Charitable Art Foundation, Santee



Opening of Queen Califia's Magical Circle, Escondido
2003
Video (color, sound)
2 hrs., 2 min., 24 sec.
Niki Charitable Art Foundation, Santee

Niki de Saint Phalle: Structures for Life

MoMA PS1, March 11, 2021 - September 06, 2021



NIKI DE SAINT PHALLE (French and American, 1930–2002)

Maquette of The Sphinx

c. 1984

Painted plaster

Two parts: 16 1/2 × 26 × 20" (41.9 × 66 × 50.8 cm); 30 × 25 1/2 × 17 1/2" (76.2 × 64.8 × 44.5 cm)

Niki Charitable Art Foundation, Santee



NIKI DE SAINT PHALLE (French and American, 1930–2002)

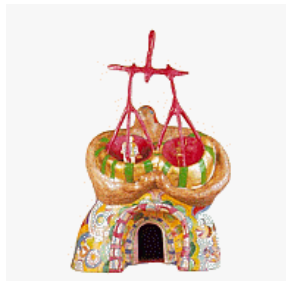
Maquette mano del mago / Magicien

c. 1984

Plaster with pieces of glass and mirror

42 1/8 × 13 3/8 × 12 5/8" (107 × 34 × 32 cm)

Niki Charitable Art Foundation, Santee



NIKI DE SAINT PHALLE (French and American, 1930–2002)

La justice

1977-1978

Painted polyester

31 1/2 × 20 1/16 × 10 5/8" (80 × 51 × 27 cm)

Private collection



NIKI DE SAINT PHALLE (French and American, 1930–2002)

La mort

1985

Painted polyester

11 7/16 × 18 7/8 × 14 3/16" (29 × 48 × 36 cm)

Courtesy Galerie GP& N Vallois, Paris



NIKI DE SAINT PHALLE (French and American, 1930–2002)

Adam et Eve (petit)

1985

Painted polyester

20 1/16 × 23 1/4 × 15 3/8" (51 × 59 × 39 cm)

Private collection

Niki de Saint Phalle: Structures for Life

MoMA PS1, March 11, 2021 - September 06, 2021



NIKI DE SAINT PHALLE (French and American, 1930–2002)
La force
1987
Painted polyester
14 3/16 × 13 × 20 11/16" (36 × 33 × 52.5 cm)
Private collection



NIKI DE SAINT PHALLE (French and American, 1930–2002)
Le monde
1990
Polyester, vinyl paint, and gold leaf on base by Jean Tinguely
26 × 9 13/16 × 7 7/8" (66 × 25 × 20 cm)
Private collection



NIKI DE SAINT PHALLE (French and American, 1930–2002)
L'arbre de vie
1990
Painted polyester and gold leaf
15 3/4 × 17 11/16 × 12 3/16" (40 × 45 × 31 cm)
Courtesy Galerie GP & N Vallois, Paris



NIKI DE SAINT PHALLE (French and American, 1930–2002)
Tarot Garden
1991
Lithograph
23 3/4 × 31 1/2" (60.3 × 80 cm)
Courtesy Salon 94, New York



NIKI DE SAINT PHALLE (French and American, 1930–2002)
Sphinx
1995
Lithograph
14 5/16 × 18 9/16" (36.4 × 47.2 cm)
Courtesy Salon 94, New York

Niki de Saint Phalle: Structures for Life

MoMA PS1, March 11, 2021 - September 06, 2021



NIKI DE SAINT PHALLE (French and American, 1930–2002)

The Spiritual Feast

1999

Lithograph and stickers

18 7/8 × 23 3/4" (47.9 × 60.3 cm)

Niki Charitable Art Foundation, Santee



NIKI DE SAINT PHALLE (French and American, 1930–2002)

Niki de Saint Phalle Tarot Cards

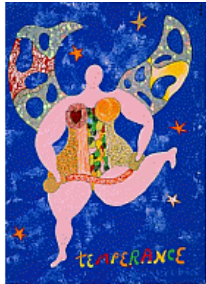
2002

22 cards and 1 booklet

Cards: 5 1/2 × 3 1/8" (14 × 8 cm)

Booklet: 5 1/2" (14 cm), 48 pages

Thomas J. Watson Library, The Metropolitan Museum of Art, New York



NIKI DE SAINT PHALLE (French and American, 1930–2002)

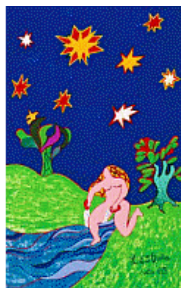
Temperance

1997

Lithograph and collage elements

29 1/2 × 22 5/16" (74.9 × 56.6 cm)

Courtesy Salon 94, New York



NIKI DE SAINT PHALLE (French and American, 1930–2002)

L'Estrella Carta No. XVII (The Star)

1997

Lithograph and collage elements

21 13/16 × 15 13/16" (55.4 × 40.1 cm)

Courtesy Salon 94, New York



NIKI DE SAINT PHALLE (French and American, 1930–2002)

The Falling Tower Card

1997

Lithograph and collage elements

29 1/2 × 22 5/16" (74.9 × 56.6 cm)

Courtesy Salon 94, New York

Niki de Saint Phalle: Structures for Life

MoMA PS1, March 11, 2021 - September 06, 2021



NIKI DE SAINT PHALLE (French and American, 1930–2002)
The Devil XV
1997
Lithograph and collage elements
29 1/2 × 22 5/16" (74.9 × 56.6 cm)
Courtesy Salon 94, New York



NIKI DE SAINT PHALLE (French and American, 1930–2002)
La lune (Moon Goddess)
1997
Lithograph and collage elements
29 1/2 × 22 5/16" (74.9 × 56.6 cm)
Courtesy Salon 94, New York



NIKI DE SAINT PHALLE (French and American, 1930–2002)
The Sun Card No. XVIII
1998
Lithograph and collage elements
29 1/2 × 22 5/16" (74.9 × 56.6 cm)
Courtesy Salon 94, New York



NIKI DE SAINT PHALLE (French and American, 1930–2002)
The Hierophant Card No. V
1998
Lithograph and collage elements
29 1/2 × 22 5/16" (74.9 × 56.6 cm)
Courtesy Salon 94, New York



NIKI DE SAINT PHALLE (French and American, 1930–2002)
Strength Card No. II
1998
Lithograph and collage elements
22 1/4 × 29 1/2" (56.5 × 74.9 cm)
Courtesy Salon 94, New York

Niki de Saint Phalle: Structures for Life

MoMA PS1, March 11, 2021 - September 06, 2021



NIKI DE SAINT PHALLE (French and American, 1930–2002)

Hanged Man Card No. XII

1999

Lithograph and collage elements

29 1/2 × 22 5/16" (74.9 × 56.6 cm)

Courtesy Salon 94, New York



NIKI DE SAINT PHALLE (French and American, 1930–2002)

Justice

1999

Lithograph and collage elements

29 1/2 × 22 5/16" (74.9 × 56.6 cm)

Courtesy Salon 94, New York



Report on Construction of Tarot Garden in Italy

n.d.

Video (black and white, sound)

12 min., 55 sec.

Niki Charitable Art Foundation, Santee



Tarot Garden Diaries Part I (Lavoro Pierre Marie)

c. 1986

Video (color, sound), with footage by Tonino Urtis

31 min., 22 sec.

Niki Charitable Art Foundation, Santee



Tarot Garden Diaries Part II (Cantiere)

c. 1988

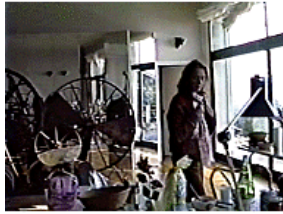
Video (color, sound)

31 min., 41 sec.

Niki Charitable Art Foundation, Santee

Niki de Saint Phalle: Structures for Life

MoMA PS1, March 11, 2021 - September 06, 2021

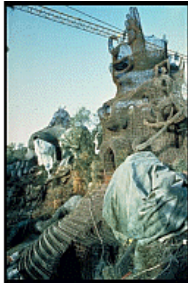


Tarot Garden Diaries Part V (Compilation)

1989–1990

Video (color, sound), with footage by Venera Finocchiaro
30 min., 58 sec.

Niki Charitable Art Foundation, Santee



GIULIO PIETROMARCHI (Italian, born 1963)

Iron magician

1982

Inkjet print on fine art cotton paper, scanned from Kodak Ektachrome film
12 1/2 × 8 3/4" (31.8 × 22.2 cm)

Courtesy the artist



GIULIO PIETROMARCHI (Italian, born 1963)

Marco Iacotonio in front of the serpent of The High Priestess

1984

Inkjet print on fine art cotton paper, scanned from Kodak Ektachrome film
8 3/4 × 12 1/2" (22.2 × 31.8 cm)

Courtesy the artist



GIULIO PIETROMARCHI (Italian, born 1963)

Niki and Jean

1985

Inkjet print on fine art cotton paper, scanned from Kodak Ektachrome film
8 3/4 × 12 1/2" (22.2 × 31.8 cm)

Courtesy the artist



GIULIO PIETROMARCHI (Italian, born 1963)

The prayer

1986

Inkjet print on fine art cotton paper, scanned from Kodak Ektachrome film
8 3/4 × 12 1/2" (22.2 × 31.8 cm)

Courtesy the artist



GIULIO PIETROMARCHI (Italian, born 1963)
Hand of The Magician, rear view
1988
Inkjet print on fine art cotton paper, scanned from Kodak ektachrome film
12 1/2 × 8 3/4" (31.8 × 22.2 cm)
Courtesy the artist



GIULIO PIETROMARCHI (Italian, born 1963)
Marco Iacotonio (left) and Tonino Urtis (right) work on The High Priestess
1988
Inkjet print on fine art cotton paper, scanned from Kodak ektachrome film
8 3/4 × 12 1/2" (22.2 × 31.8 cm)
Courtesy the artist



GIULIO PIETROMARCHI (Italian, born 1963)
Strength
1995
Inkjet print on fine art cotton paper, scanned from Kodak ektachrome film
10 3/4 × 10 3/4" (27.3 × 27.3 cm)
Courtesy the artist



GIULIO PIETROMARCHI (Italian, born 1963)
Inside the chapel is an altar of remembrance for those who worked on the Tarot Garden
1996
Inkjet print on fine art cotton paper, scanned from Kodak ektachrome film
10 3/4 × 10 3/4" (27.3 × 27.3 cm)
Courtesy the artist



GIULIO PIETROMARCHI (Italian, born 1963)
Dining table in the belly of The Empress; Chairs by Pierre Marie Lejeune
1996
Inkjet print on fine art cotton paper, scanned from Kodak ektachrome film
10 3/4 × 10 3/4" (27.3 × 27.3 cm)
Courtesy the artist

Niki de Saint Phalle: Structures for Life

MoMA PS1, March 11, 2021 - September 06, 2021



GIULIO PIETROMARCHI (Italian, born 1963)

Panoramic view of the Tarot Garden

1999

Inkjet print on fine art cotton paper, scanned from Kodak ektachrome film
10 3/4 × 10 3/4" (27.3 × 27.3 cm)

Courtesy the artist



LAURENT CONDOMINAS (French, born 1949)

The Empress (left) and The Falling Tower (right) from the eyes in the gangway of The Emperor

c. early 1980s

Digital C-print

Courtesy the artist



LAURENT CONDOMINAS (French, born 1949)

Tarot team members lifting the metallic structure of a supplicant on top of The Pope

c. 1986

Digital C-print

12 1/2 × 8 3/16" (31.8 × 20.8 cm)

Courtesy the artist



LAURENT CONDOMINAS (French, born 1949)

From the top of The Magician, a view on The Tree of Life in concrete, with The Pope and The Sun already completed

c. 1986

Digital C-print

8 3/8 × 12 1/2" (21.3 × 31.8 cm)

Courtesy the artist



LAURENT CONDOMINAS (French, born 1949)

Marco laying the ceramic and tiles on The Tree of Life. Behind him is The Hanged Man

c. 1987

Digital C-print

12 1/2 × 8 5/16" (31.8 × 21.2 cm)

Courtesy the artist

Niki de Saint Phalle: Structures for Life

MoMA PS1, March 11, 2021 - September 06, 2021



LAURENT CONDOMINAS (French, born 1949)
Working on The Tree of Life. Justice on the left, The Pope in the background
c. 1987
Digital C-print
8 5/16 × 12 1/2" (21.2 × 31.8 cm)
Courtesy the artist



LAURENT CONDOMINAS (French, born 1949)
Justice
c. 1988
Digital C-print
10 3/8 × 12 1/2" (26.4 × 31.8 cm)
Courtesy the artist



LAURENT CONDOMINAS (French, born 1949)
The Sun seen from behind La Mort
c. 1990
Digital C-print
10 × 12 1/2" (25.4 × 31.8 cm)
Courtesy the artist



LAURENT CONDOMINAS (French, born 1949)
Niki (fur hat) and crew watching as Death is craned down on its final spot
c. 1990
Digital C-print
8 5/16 × 12 1/2" (21.2 × 31.8 cm)
Courtesy the artist



LAURENT CONDOMINAS (French, born 1949)
Dark Front: The Wheel of Fortune, The Papesse, The Magician and The Tree of Life
1989
Digital C-print
12 1/2 × 10" (31.8 × 25.4 cm)
Courtesy the artist

Niki de Saint Phalle: Structures for Life

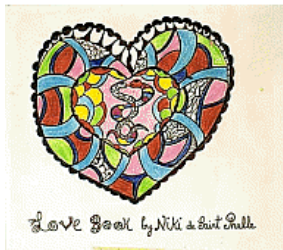
MoMA PS1, March 11, 2021 - September 06, 2021



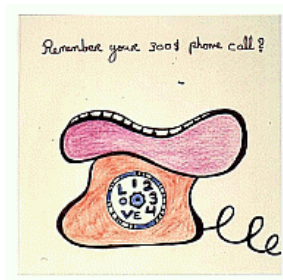
LAURENT CONDOMINAS (French, born 1949)
The Empress: Windows
1989
Digital C-print
9 13/16 × 12 1/2" (24.9 × 31.8 cm)
Courtesy the artist



LAURENT CONDOMINAS (French, born 1949)
Niki and Tarot team members working on a sculpture
c. 1990
Digital C-print
8 5/16 × 12 1/2" (21.2 × 31.8 cm)
Courtesy the artist



NIKI DE SAINT PHALLE (French and American, 1930–2002)
Love Book (Coeur)
c. 1970
Colored crayons and felt pen on bristol paper
7 1/8 × 8" (18.1 × 20.3 cm)
Niki Charitable Art Foundation, Santee



NIKI DE SAINT PHALLE (French and American, 1930–2002)
Love Book (Telephone)
c. 1970
Colored crayons and felt pen on bristol paper
7 1/8 × 7 1/8" (18.1 × 18.1 cm)
Niki Charitable Art Foundation, Santee



NIKI DE SAINT PHALLE (French and American, 1930–2002)
Love Book (Your Hand)
c. 1970
Colored crayons and felt pen on bristol paper
7 1/8 × 7 1/8" (18.1 × 18.1 cm)
Niki Charitable Art Foundation, Santee

Niki de Saint Phalle: Structures for Life

MoMA PS1, March 11, 2021 - September 06, 2021



NIKI DE SAINT PHALLE (French and American, 1930–2002)

Love Book (Étoiles)

c. 1970

Colored crayons and felt pen on bristol paper

7 1/4 × 7 1/4" (18.4 × 18.4 cm)

Niki Charitable Art Foundation, Santee



NIKI DE SAINT PHALLE (French and American, 1930–2002)

Love Book (Dragon)

c. 1970

Colored crayons and felt pen on bristol paper

7 3/8 × 7 5/16" (18.8 × 18.5 cm)

Niki Charitable Art Foundation, Santee



NIKI DE SAINT PHALLE (French and American, 1930–2002)

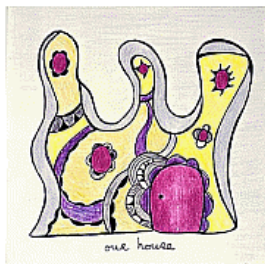
Love Book (Our Cat)

c. 1970

Colored crayons and felt pen on bristol paper

7 3/16 × 7 3/16" (18.2 × 18.3 cm)

Niki Charitable Art Foundation, Santee



NIKI DE SAINT PHALLE (French and American, 1930–2002)

Love Book (Our House)

c. 1970

Colored crayons and felt pen on bristol paper

7 1/16 × 7 1/8" (17.9 × 18 cm)

Niki Charitable Art Foundation, Santee



NIKI DE SAINT PHALLE (French and American, 1930–2002)

Love Book (You are my Bird)

c. 1970

Colored crayons and felt pen on bristol paper

7 1/8 × 7 1/8" (18.1 × 18 cm)

Niki Charitable Art Foundation, Santee

Niki de Saint Phalle: Structures for Life

MoMA PS1, March 11, 2021 - September 06, 2021



NIKI DE SAINT PHALLE (French and American, 1930–2002)

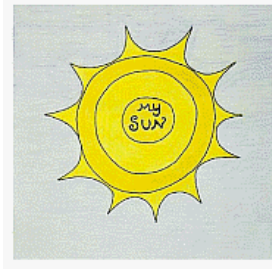
Love Book (For You)

c. 1970

Colored crayons and felt pen on bristol paper

7 1/8 × 7 1/8" (18 × 18 cm)

Niki Charitable Art Foundation, Santee



NIKI DE SAINT PHALLE (French and American, 1930–2002)

Love Book (My Sun)

c. 1970

Colored crayons and felt pen on bristol paper

7 3/16 × 7 5/16" (18.3 × 18.5 cm)

Niki Charitable Art Foundation, Santee



NIKI DE SAINT PHALLE (French and American, 1930–2002)

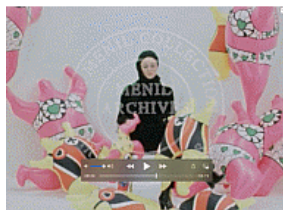
My Love

1971

Offset-printed book; published by Moderna Museet, Stockholm

7 × 7" (17.8 × 17.8 cm)

Niki Charitable Art Foundation, Santee



FRANÇOIS DE MENIL (American, born 1945)

MONIQUE ALEXANDRE

Niki de Saint Phalle

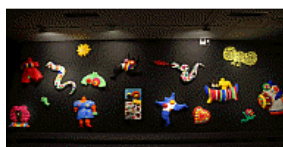
1982

Video (color, sound)

15 min., 43 sec.

Courtesy of Menil Archives, The Menil Collection, Houston. (c) François

De Menil



NIKI DE SAINT PHALLE (French and American, 1930–2002)

Last Night I Had a Dream

1968–1988

Painted polyester

Overall dimensions variable

Niki Charitable Art Foundation, Santee

Niki de Saint Phalle: Structures for Life

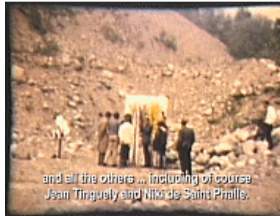
MoMA PS1, March 11, 2021 - September 06, 2021



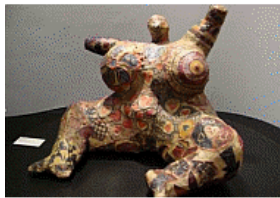
NIKI DE SAINT PHALLE (French and American, 1930–2002)
Autel O.A.S.
1962-1992
Bronze
99 3/16 × 94 7/8 × 16 1/8" (252 × 241 × 41 cm)
Courtesy Galerie GP & N Vallois, Paris



NIKI DE SAINT PHALLE (French and American, 1930–2002)
Tir neuf trous - Edition MAT
1964
Paint in plastic bags, embedded in plaster on wood
27 15/16 × 20 7/8" (71 × 53.1 cm)
Private collection



BARBRO SCHULTZ LUNDESTAM (Swedish, born 1945)
Tir Shoot, Niki de Saint Phalle
2013
Video (color, sound)
12 min., 6 sec.
Courtesy the artist



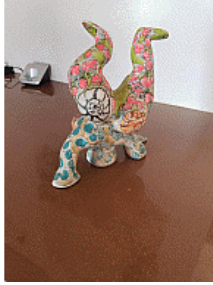
NIKI DE SAINT PHALLE (French and American, 1930–2002)
Nana assise
1965
Wool, paper collage, and wire mesh
39 3/8 × 55 × 55" (100.1 × 139.7 × 139.7 cm)
Private collection



NIKI DE SAINT PHALLE (French and American, 1930–2002)
Mini Nana maison
1965
Painted plaster
6 1/2 × 5 7/8 × 4 3/4" (16.5 × 15 × 12 cm)
Private collection

Niki de Saint Phalle: Structures for Life

MoMA PS1, March 11, 2021 - September 06, 2021



NIKI DE SAINT PHALLE (French and American, 1930–2002)
Mini Nana acrobat
1968
Painted plaster
12 × 6 × 6" (30.5 × 15.2 × 15.2 cm)
Collection Barbara G. & Ira D. Sahlman



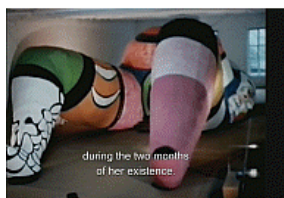
NIKI DE SAINT PHALLE (French and American, 1930–2002)
Mini Nana maison
c. 1968
Painted polyester
6 5/16 × 5 7/8 × 3 9/16" (16 × 15 × 9 cm)
Private collection



NIKI DE SAINT PHALLE (French and American, 1930–2002)
Untitled (Hon)
1966
Ink, crayon, gouache, watercolor, and adhesive tape on printed paper
39 1/2 × 27 1/2" (100.3 × 69.9 cm)
Courtesy Nohra Haime Gallery, New York



MAGNUS WIBOM (Swedish, 1939 – 2010)
Niki de Saint Phalle Jean Tinguely Per Olof Ultvedt are building Hon
1966
16 mm film transferred to video (b/w, sound, in Swedish)
32 min.
Moderna Museet, Stockholm



Archival footage of Hon
1966
16 mm film transferred to video
Produced by Réunion des musées nationaux – Grand Palais
3 min., 37 sec.
Niki Charitable Art Foundation, Santee

Niki de Saint Phalle: Structures for Life

MoMA PS1, March 11, 2021 - September 06, 2021



NIKI DE SAINT PHALLE (French and American, 1930–2002)

Hon-en katedral : Hon-en historia

1967

Book; published by Moderna Museet, Stockholm

14 1/2 × 12" (36.8 × 30.5 cm)

Niki Charitable Art Foundation, Santee



NIKI DE SAINT PHALLE (French and American, 1930–2002)

Hon-en katedral : Hon-en historia

1967

Book; published by Moderna Museet, Stockholm

14 1/2 × 12" (36.8 × 30.5 cm)

Private collection, New York



NIKI DE SAINT PHALLE (French and American, 1930–2002)

Hon-en katedral : Hon-en historia

1967

Book; published by Moderna Museet, Stockholm

14 1/2 × 12" (36.8 × 30.5 cm)

Private collection



NIKI DE SAINT PHALLE (French and American, 1930–2002)

The New Man is Coming

1980-1981

Painted polyester with plastic objects

86 × 72 × 20 1/2" (218.4 × 182.9 × 52.1 cm)

Lawrence B. and Elyse Benenson Collections



NIKI DE SAINT PHALLE (French and American, 1930–2002)

Le fil du discours (The Line of Conversation)

1980

Painted polyester, metal, and light bulbs

50 1/4 × 19 1/2 × 13 1/4" (127.6 × 49.5 × 33.7 cm)

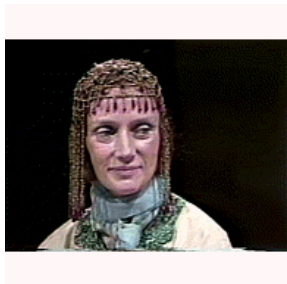
Courtesy Salon 94, New York

Niki de Saint Phalle: Structures for Life

MoMA PS1, March 11, 2021 - September 06, 2021



NIKI DE SAINT PHALLE (French and American, 1930–2002)
Maquette for exhibition poster, Niki Museum, Japan
1994
Photocollage
18 1/2 × 24 1/2" (47 × 62.2 cm)
Niki Charitable Art Foundation, Santee



Niki de Saint Phalle
1985
Video (color, sound); produced by Gerlinde Productions
9 min.
Niki Charitable Art Foundation, Santee



NIKI DE SAINT PHALLE (French and American, 1930–2002)
Flacon de parfum
1982
Glass and plastic
13 13/16 × 4 3/4 × 4 3/4" (35.1 × 12 × 12 cm)
Niki Charitable Art Foundation, Santee



NIKI DE SAINT PHALLE (French and American, 1930–2002)
Astrology perfumes
n.d.
12 perfume bottles with various astrological signs
2 fl oz.; 4 3/4 × 3 3/4" (12.1 × 9.5 cm)
Niki Charitable Art Foundation, Santee



NIKI DE SAINT PHALLE (French and American, 1930–2002)
"Dance of the Snakes" perfume and necklace Set
n.d.
0.02 fl oz. perfume; 7 3/4 × 7" (19.7 × 17.8 cm)
Niki Charitable Art Foundation, Santee

Niki de Saint Phalle: Structures for Life

MoMA PS1, March 11, 2021 - September 06, 2021



NIKI DE SAINT PHALLE (French and American, 1930–2002)
Perfume and bracelet set (turquoise)
n.d.
1/3 oz. perfume; 3 1/2 × 4" (8.9 × 10.2 cm)
Niki Charitable Art Foundation, Santee



NIKI DE SAINT PHALLE (French and American, 1930–2002)
Perfume and card set
n.d.
0.45 fl oz. spray perfume bottle
8 cards: 5 × 9 3/8" (12.7 × 23.8 cm)
Niki Charitable Art Foundation, Santee



NIKI DE SAINT PHALLE (French and American, 1930–2002)
Perfume
n.d.
2 11/16 × 2 1/8" (6.8 × 5.4 cm)
Niki Charitable Art Foundation, Santee



NIKI DE SAINT PHALLE (French and American, 1930–2002)
Two silk handkerchiefs and perfume
n.d.
handkerchiefs: 7 1/2 × 10 5/8" (19.1 × 27 cm)
perfume: 4 fl oz.
Niki Charitable Art Foundation, Santee



NIKI DE SAINT PHALLE (French and American, 1930–2002)
Perfume
n.d.
1 oz.; 5 1/2 × 3 1/2" (14 × 8.9 cm)
Niki Charitable Art Foundation, Santee

Niki de Saint Phalle: Structures for Life

MoMA PS1, March 11, 2021 - September 06, 2021



NIKI DE SAINT PHALLE (French and American, 1930–2002)

Perfume and scarf set (Snakes and Toi et Moi)

n.d.

1/6 oz. perfume; 5 × 12" (12.7 × 30.5 cm)

Niki Charitable Art Foundation, Santee



NIKI DE SAINT PHALLE (French and American, 1930–2002)

Snake scarf

n.d.

Silk

Private collection



NIKI DE SAINT PHALLE (French and American, 1930–2002)

Plate "serpents"

1982

Porcelain and silkscreen

8 11/16 × 8 11/16 × 1 3/16" (22.1 × 22.1 × 3 cm)

Courtesy Salon 94, New York



NIKI DE SAINT PHALLE (French and American, 1930–2002)

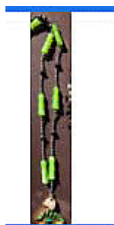
"Serpent" brooch

1989

Gilt and enamelled metal

3 1/4 × 3 3/8" (8.3 × 8.6 cm)

Private collection, La Jolla



NIKI DE SAINT PHALLE (French and American, 1930–2002)

Necklace and pendant "Oeil serpent"

1991

Gold, diamond, metal, and plastic links

14 1/2 × 1 1/2 × 1 1/2" (36.8 × 3.8 × 3.8 cm)

Private collection, Oakland

Niki de Saint Phalle: Structures for Life

MoMA PS1, March 11, 2021 - September 06, 2021



NIKI DE SAINT PHALLE (French and American, 1930–2002)

Pin "Ange"

1993

Synthetic enamel, injected metal, and gold finish

4 11/16 × 3 1/2" (11.9 × 8.9 cm)

Niki Charitable Art Foundation, Santee



NIKI DE SAINT PHALLE (French and American, 1930–2002)

"Serpent" brooch

1998

Gilt and enamelled metal

2 1/2 × 3" (6.4 × 7.6 cm)

Courtesy Salon 94, New York



NIKI DE SAINT PHALLE (French and American, 1930–2002)

"Serpent" brooch

1998

Gilt and enamelled metal

2 15/16 × 2 3/8" (7.5 × 6 cm)

Courtesy Salon 94, New York



NIKI DE SAINT PHALLE (French and American, 1930–2002)

"Grenouille" brooch

1998

Gilt and enamelled metal

2 9/16 × 2 3/16" (6.5 × 5.6 cm)

Courtesy Salon 94, New York



NIKI DE SAINT PHALLE (French and American, 1930–2002)

"Rhinocéros gris" brooch

1998

Gilt and enamelled metal

1 3/4 × 2 9/16" (4.4 × 6.5 cm)

Courtesy Salon 94, New York

Niki de Saint Phalle: Structures for Life

MoMA PS1, March 11, 2021 - September 06, 2021



NIKI DE SAINT PHALLE (French and American, 1930–2002)
"Rhinocéros couleurs" brooch
1998
Gilt and enamelled metal
1 3/4 × 2 9/16" (4.4 × 6.5 cm)
Courtesy Salon 94, New York



NIKI DE SAINT PHALLE (French and American, 1930–2002)
"L'oeil serpent" brooch
1998
Gold metal with colored enamel
1 1/2 × 1 1/2" (3.8 × 3.8 cm)
Courtesy Salon 94, New York



NIKI DE SAINT PHALLE (French and American, 1930–2002)
"L'oeil serpent" brooch
1998
Gold metal with colored enamel
1 1/2 × 1 1/2" (3.8 × 3.8 cm)
Courtesy Salon 94, New York



NIKI DE SAINT PHALLE (French and American, 1930–2002)
"L'oeil serpent" brooch
1998
Gold metal with colored enamel
1 1/2 × 1 1/2" (3.8 × 3.8 cm)
Courtesy Salon 94, New York



NIKI DE SAINT PHALLE (French and American, 1930–2002)
Prototype "Lune"
n.d.
Metal
2 1/4 × 2 1/4" (5.7 × 5.7 cm)
Private collection, Oakland

Niki de Saint Phalle: Structures for Life

MoMA PS1, March 11, 2021 - September 06, 2021



NIKI DE SAINT PHALLE (French and American, 1930–2002)

Prototype "Lune"

n.d.

Metal and paint

2 1/4 × 2 1/4" (5.7 × 5.7 cm)

Niki Charitable Art Foundation, Santee



NIKI DE SAINT PHALLE (French and American, 1930–2002)

Ear clips "Oui"

n.d.

Metal and painted enamel

1 3/16 × 1 5/16 × 9/16" (3 × 3.3 × 1.4 cm)

Courtesy Salon 94, New York



NIKI DE SAINT PHALLE (French and American, 1930–2002)

Pin "Obelisque fleurs"

n.d.

Metal and painted enamel

1 3/8 × 9/16" (3.5 × 1.4 cm)

Niki Charitable Art Foundation, Santee



NIKI DE SAINT PHALLE (French and American, 1930–2002)

"Dog" pin

n.d.

Painted enamel

9/16 × 13/16" (1.4 × 2.1 cm)

Private collection, Oakland



NIKI DE SAINT PHALLE (French and American, 1930–2002)

Le palais (Auberge)

1978–1979

Painted polyester

22 × 72 × 48" (55.9 × 182.9 × 121.9 cm)

Courtesy Salon 94, New York

Niki de Saint Phalle: Structures for Life

MoMA PS1, March 11, 2021 - September 06, 2021



NIKI DE SAINT PHALLE (French and American, 1930–2002)

Décor château

n.d.

Painted polyester

19 5/16 × 18 1/2 × 14 5/8" (49 × 47 × 37.1 cm)

Courtesy Salon 94, New York



NIKI DE SAINT PHALLE (French and American, 1930–2002)

Chapelle

1975

Painted polyester

13 13/16 × 24 13/16 × 9 13/16" (35.1 × 63 × 24.9 cm)

Private collection



NIKI DE SAINT PHALLE (French and American, 1930–2002)

Wall Street

1977

Painted polyester

35 1/2 × 18 × 16" (90.2 × 45.7 × 40.6 cm)

Private collection



NIKI DE SAINT PHALLE (French and American, 1930–2002)

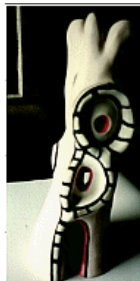
Élément de décor (Château peint en vert)

c. 1977

Painted polyester

16 7/8 × 19 5/16 × 9 13/16" (42.9 × 49 × 24.9 cm)

Courtesy Salon 94, New York



NIKI DE SAINT PHALLE (French and American, 1930–2002)

Fantasy Tower

c. 1977

Painted polyester

16 1/8 × 5 7/8 × 6 11/16" (41 × 15 × 17 cm)

Courtesy Salon 94, New York

Niki de Saint Phalle: Structures for Life
MoMA PS1, March 11, 2021 - September 06, 2021



NIKI DE SAINT PHALLE (French and American, 1930–2002)
Élément décor château
c. 1977
Painted plaster
18 1/2 × 19 11/16 × 14 3/16" (47 × 50 × 36 cm)
Private collection



The Travelling Companion
1977
Video (color, sound)
Directed by Constantin Mulgrave
7 min., 43 sec.
Niki Charitable Art Foundation, Santee



Photocollage of scenery for The Travelling Companion
1977
Photocollage
16 × 16" (40.6 × 40.6 cm)
Niki Charitable Art Foundation, Santee



Photocollage of scenery for The Travelling Companion
1977
Photocollage
16 × 16" (40.6 × 40.6 cm)
Niki Charitable Art Foundation, Santee



NIKI DE SAINT PHALLE (French and American, 1930–2002)
Photocollage of scenery for The Travelling Companion
1977
Photocollage
16 × 16" (40.6 × 40.6 cm)
Niki Charitable Art Foundation, Santee

Niki de Saint Phalle: Structures for Life

MoMA PS1, March 11, 2021 - September 06, 2021



Photocollage of scenery for The Travelling Companion

1977

Photocollage

16 × 16" (40.6 × 40.6 cm)

Niki Charitable Art Foundation, Santee



NIKI DE SAINT PHALLE (French and American, 1930–2002)

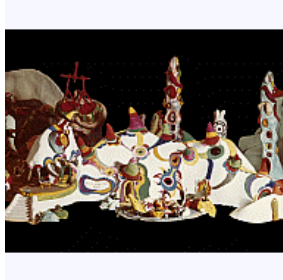
Photocollage of scenery for The Travelling Companion

1977

Photocollage

16 × 16" (40.6 × 40.6 cm)

Niki Charitable Art Foundation, Santee



NIKI DE SAINT PHALLE (French and American, 1930–2002)

Element used in photocollage of scenery for The Travelling Companion

1977

Photocollage element

9 5/8 × 16" (24.4 × 40.6 cm)

Niki Charitable Art Foundation, Santee



RICO WEBER (Swiss, 1942 – 2004)

Niki Commanderie

c. 1970

Video (color, no sound)

15 min., 41 sec.

Courtesy État de Fribourg Suisse / MAHF



NIKI DE SAINT PHALLE (French and American, 1930–2002)

TV on the Brain

1977

Acrylic and crayon on polyester resin, wire

31 1/4 × 16 1/4 × 11" (79.4 × 41.3 × 27.9 cm)

Niki Charitable Art Foundation, Santee

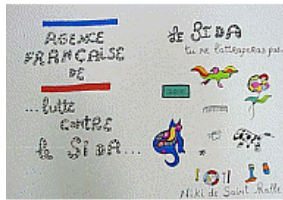
Niki de Saint Phalle: Structures for Life
 MoMA PS1, March 11, 2021 - September 06, 2021



NIKI DE SAINT PHALLE (French and American, 1930–2002)
Réalizations et projets d'architectures
 1974
 Book; published by Galerie Alexandre Iolas, Paris
 6 5/16 × 9 7/16" (16 × 24 cm)
 Niki Charitable Art Foundation, Santee



NIKI DE SAINT PHALLE (French and American, 1930–2002)
Dear Clarice
 1983
 Lithograph
 29 × 41 15/16" (73.7 × 106.5 cm)
 Niki Charitable Art Foundation, Santee



NIKI DE SAINT PHALLE (French and American, 1930–2002)
Drawing for the book "Le sida, tu ne l'attraperas pas..."
 c. 1989
 Marker, watercolor, and pencil on white paper
 17 11/16 × 25 5/8" (45 × 65 cm)
 Niki Charitable Art Foundation, Santee



NIKI DE SAINT PHALLE (French and American, 1930–2002)
Drawing for the book "Le SIDA, tu ne l'attraperas pas..."
 c. 1989
 Marker, watercolor, and pencil on white paper
 17 11/16 × 25 5/8" (45 × 65 cm)
 Niki Charitable Art Foundation, Santee



NIKI DE SAINT PHALLE (French and American, 1930–2002)
Drawing for the book "Le SIDA, tu ne l'attraperas pas..."
 c. 1989
 Marker, watercolor, and pencil on white paper
 17 11/16 × 25 5/8" (45 × 65 cm)
 Niki Charitable Art Foundation, Santee

Niki de Saint Phalle: Structures for Life
 MoMA PS1, March 11, 2021 - September 06, 2021



NIKI DE SAINT PHALLE (French and American, 1930–2002)
Drawing for the book "Le SIDA, tu ne l'attraperas pas..."
 c. 1989
 Marker, watercolor, and pencil on white paper
 17 11/16 × 25 5/8" (45 × 65 cm)
 Niki Charitable Art Foundation, Santee



NIKI DE SAINT PHALLE (French and American, 1930–2002)
Drawing for the book "Le SIDA, tu ne l'attraperas pas..."
 c. 1989
 Marker, watercolor, and pencil on white paper
 17 11/16 × 25 5/8" (45 × 65 cm)
 Niki Charitable Art Foundation, Santee



NIKI DE SAINT PHALLE (French and American, 1930–2002)
Drawing for the book "Le SIDA, tu ne l'attraperas pas..."
 c. 1989
 Marker, watercolor, and pencil on white paper
 17 11/16 × 25 5/8" (45 × 65 cm)
 Niki Charitable Art Foundation, Santee



NIKI DE SAINT PHALLE (French and American, 1930–2002)
Drawing for the book "Le SIDA, tu ne l'attraperas pas..."
 c. 1989
 Marker, watercolor, and pencil on white paper
 17 11/16 × 25 5/8" (45 × 65 cm)
 Niki Charitable Art Foundation, Santee



NIKI DE SAINT PHALLE (French and American, 1930–2002)
Drawing for the book "Le SIDA, tu ne l'attraperas pas..."
 c. 1989
 Marker, watercolor, and pencil on white paper
 17 11/16 × 25 5/8" (45 × 65 cm)
 Niki Charitable Art Foundation, Santee

Niki de Saint Phalle: Structures for Life

MoMA PS1, March 11, 2021 - September 06, 2021



NIKI DE SAINT PHALLE (French and American, 1930–2002)
Drawing for the book "Le SIDA, tu ne l'attraperas pas..."
c. 1989
Marker, watercolor, and pencil on white paper
17 11/16 × 25 5/8" (45 × 65 cm)
Niki Charitable Art Foundation, Santee



NIKI DE SAINT PHALLE (French and American, 1930–2002)
Drawing for the book "Le SIDA, tu ne l'attraperas pas..."
c. 1989
Marker, watercolor, and pencil on white paper
17 11/16 × 25 5/8" (45 × 65 cm)
Niki Charitable Art Foundation, Santee



NIKI DE SAINT PHALLE (French and American, 1930–2002)
Drawing for the book "Le SIDA, tu ne l'attraperas pas..."
c. 1989
Marker, watercolor, and pencil on white paper
17 11/16 × 25 5/8" (45 × 65 cm)
Niki Charitable Art Foundation, Santee



NIKI DE SAINT PHALLE (French and American, 1930–2002)
Drawing for the book "Le SIDA, tu ne l'attraperas pas..."
c. 1989
Marker, watercolor, and pencil on white paper
17 11/16 × 25 5/8" (45 × 65 cm)
Niki Charitable Art Foundation, Santee



NIKI DE SAINT PHALLE (French and American, 1930–2002)
Drawing for the book "Le SIDA, tu ne l'attraperas pas..."
c. 1989
Marker, watercolor, and pencil on white paper
17 11/16 × 25 5/8" (45 × 65 cm)
Niki Charitable Art Foundation, Santee

Niki de Saint Phalle: Structures for Life

MoMA PS1, March 11, 2021 - September 06, 2021



NIKI DE SAINT PHALLE (French and American, 1930–2002)

Stop AIDS Stop Sida

1994

Offset print with stamps

4 1/2 × 6 5/16" (11.4 × 16 cm)

Niki Charitable Art Foundation, Santee



NIKI DE SAINT PHALLE (French and American, 1930–2002)

Obélisque bébé

1987

Painted polyester

7 1/8 × 3 × 2 9/16" (18 × 7.6 × 6.5 cm)

Niki Charitable Art Foundation, Santee



NIKI DE SAINT PHALLE (French and American, 1930–2002)

Obélisque fleurs

1987

Painted polyester

2 3/16 × 5 7/8 × 5 1/8" (5.6 × 15 × 13 cm)

Niki Charitable Art Foundation, Santee



NIKI DE SAINT PHALLE (French and American, 1930–2002)

Obélisque serpents

1987

Painted polyester

11 13/16 × 5 1/8 × 4 5/16" (30 × 13 × 10.9 cm)

Niki Charitable Art Foundation, Santee



NIKI DE SAINT PHALLE (French and American, 1930–2002)

Obélisque coeurs

1987

Painted polyester

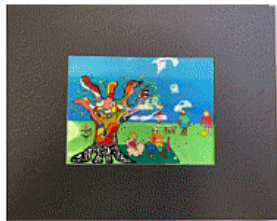
10 5/8 × 4 3/4 × 4 5/16" (26.9 × 12 × 10.9 cm)

Niki Charitable Art Foundation, Santee

Niki de Saint Phalle: Structures for Life
MoMA PS1, March 11, 2021 - September 06, 2021



NIKI DE SAINT PHALLE (French and American, 1930–2002)
La peste
1986
Painted polyester and plastic baby figurines
44 3/8 × 72 13/16 × 11 13/16" (112.8 × 184.9 × 30 cm)
Private collection



NIKI DE SAINT PHALLE (French and American, 1930–2002)
Animation cel from AIDS Public Service Announcement
1988
Paint on acetate
11 × 14" (27.9 × 35.6 cm)
Niki Charitable Art Foundation, Santee



NIKI DE SAINT PHALLE (French and American, 1930–2002)
Animation cel from AIDS Public Service Announcement
1988
Paint on acetate
11 × 14" (27.9 × 35.6 cm)
Niki Charitable Art Foundation, Santee



NIKI DE SAINT PHALLE (French and American, 1930–2002)
Animation cel from AIDS Public Service Announcement
1988
Paint on acetate
11 × 14" (27.9 × 35.6 cm)
Niki Charitable Art Foundation, Santee



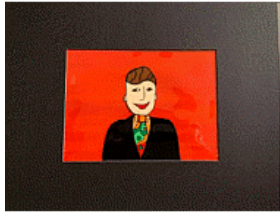
NIKI DE SAINT PHALLE (French and American, 1930–2002)
Animation cel from AIDS Public Service Announcement
1988
Paint on acetate
11 × 14" (27.9 × 35.6 cm)
Niki Charitable Art Foundation, Santee

Niki de Saint Phalle: Structures for Life

MoMA PS1, March 11, 2021 - September 06, 2021



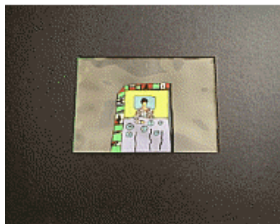
NIKI DE SAINT PHALLE (French and American, 1930–2002)
Animation cel from AIDS Public Service Announcement
1988
Paint on acetate
11 × 14" (27.9 × 35.6 cm)
Niki Charitable Art Foundation, Santee



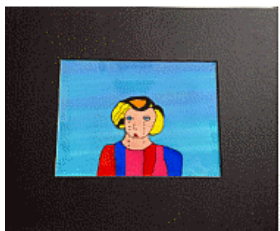
NIKI DE SAINT PHALLE (French and American, 1930–2002)
Animation cel from AIDS Public Service Announcement
1988
Paint on acetate
11 × 14" (27.9 × 35.6 cm)
Niki Charitable Art Foundation, Santee



NIKI DE SAINT PHALLE (French and American, 1930–2002)
Animation cel from AIDS Public Service Announcement
1988
Paint on acetate
11 × 14" (27.9 × 35.6 cm)
Niki Charitable Art Foundation, Santee



NIKI DE SAINT PHALLE (French and American, 1930–2002)
Animation cel from AIDS Public Service Announcement
1988
Paint on acetate
11 × 14" (27.9 × 35.6 cm)
Niki Charitable Art Foundation, Santee



NIKI DE SAINT PHALLE (French and American, 1930–2002)
Animation cel from AIDS Public Service Announcement
1988
Paint on acetate
11 × 14" (27.9 × 35.6 cm)
Niki Charitable Art Foundation, Santee

Niki de Saint Phalle: Structures for Life

MoMA PS1, March 11, 2021 - September 06, 2021



PHILIP MATHEWS (American, born 1955)

NIKI DE SAINT PHALLE (French and American, 1930–2002)

Le SIDA, tu ne l'attraperas pas

1990

Video (color, sound). Produced by Agence Francaise de lutte contre le SIDA

7 min., 22 sec.

Courtesy Philip Mathews



NIKI DE SAINT PHALLE (French and American, 1930–2002)

Trilogie des obélisques

1987

Painted polyester and sand on wooden base

65 3/4 × 57 × 53" (167 × 144.8 × 134.6 cm)

Courtesy Salon 94, New York



NIKI DE SAINT PHALLE (French and American, 1930–2002)

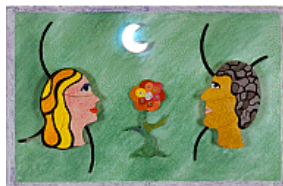
L'horloge (fond bleu)

n.d.

Paint, synthetic resin, wood, metal, plastic, electric motors, and electronic components

37 3/8 × 41 1/8 × 7 11/16" (95 × 104.5 × 19.5 cm)

Courtesy Salon 94, New York



NIKI DE SAINT PHALLE (French and American, 1930–2002)

Couple

1993

Paint, wood, and motor

39 3/8 × 60 5/8 × 8 1/4" (100 × 154 × 21 cm)

Courtesy Salon 94, New York



NIKI DE SAINT PHALLE (French and American, 1930–2002)

Californian Diary (Tempérance)

1994

Serigraph

31 1/2 × 47 3/16" (80 × 119.9 cm)

Courtesy Salon 94, New York

Niki de Saint Phalle: Structures for Life

MoMA PS1, March 11, 2021 - September 06, 2021



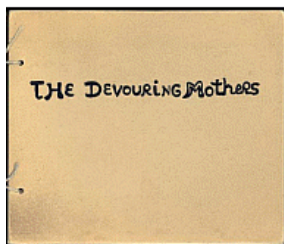
NIKI DE SAINT PHALLE (French and American, 1930–2002)
Californian Diary (Order and Chaos)
1994
Serigraph
31 1/2 × 47 3/16" (80 × 119.9 cm)
Courtesy Salon 94, New York



NIKI DE SAINT PHALLE (French and American, 1930–2002)
Californian Diary (Queen Califia)
1994
Serigraph
31 1/2 × 47 3/16" (80 × 119.9 cm)
Courtesy Salon 94, New York



NIKI DE SAINT PHALLE (French and American, 1930–2002)
Californian Diary (Telephone)
1993
Serigraph
31 1/2 × 47 3/16" (80 × 119.9 cm)
Courtesy Salon 94, New York



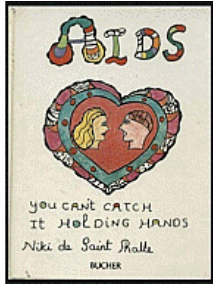
NIKI DE SAINT PHALLE (French and American, 1930–2002)
The Devouring Mothers
1972
Book; published by Gimpel Fils Gallery, London
5 1/2 × 6 1/2" (14 × 16.5 cm)
Niki Charitable Art Foundation, Santee



NIKI DE SAINT PHALLE (French and American, 1930–2002)
Please Give Me a Few Seconds of Your Eternity
1970
Book; published by Galerie Alexandre Iolas, Milan
8 5/16 × 5 7/8" (21.1 × 15 cm)
Niki Charitable Art Foundation, Santee

Niki de Saint Phalle: Structures for Life

MoMA PS1, March 11, 2021 - September 06, 2021



NIKI DE SAINT PHALLE (French and American, 1930–2002)

AIDS, You Can't Catch it Holding Hands

1986–1987

Book; published by Bucher

9 13/16 × 7 7/8" (24.9 × 20.1 cm)

Niki Charitable Art Foundation, Santee



NIKI DE SAINT PHALLE (French and American, 1930–2002)

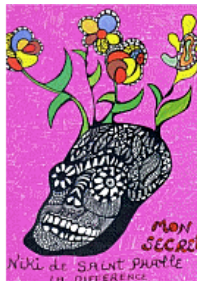
Stamps "Stop AIDS Stop Sida"

1994

Offset-printed stamps

11 3/4 × 8 1/2" (29.8 × 21.6 cm)

Niki Charitable Art Foundation, Santee



NIKI DE SAINT PHALLE (French and American, 1930–2002)

Mon secret

1994

Offset printed book; published by La Différence, Paris

11 13/16 × 9 1/2" (30 × 24.1 cm)

Niki Charitable Art Foundation, Santee



NIKI DE SAINT PHALLE (French and American, 1930–2002)

Traces

1999

Book; published by Acatos

10 1/4 × 8 3/4" (26 × 22.2 cm)

Private collection



Niki de Saint Phalle: Museum Boijmans-Van Beuningen, Rotterdam, 22

juli-5 september, 1976

1976

Book; published by Museum Boijmans-Van Beuningen, Rotterdam

5 7/8 × 4 5/16" (15 × 11 cm)

Thomas J. Watson Library, The Metropolitan Museum of Art, New York

Niki de Saint Phalle: Structures for Life

MoMA PS1, March 11, 2021 - September 06, 2021



NIKI DE SAINT PHALLE (French and American, 1930–2002)

Noah's Ark: Play Sculpture, Jerusalem

1998

Book; published by Jerusalem Foundation

height: 8 11/16" (22 cm)

Thomas J. Watson Library, The Metropolitan Museum of Art, New York



NIKI DE SAINT PHALLE (French and American, 1930–2002)

Alphabet

1970

Black marker, colored pencil, and pencil on paper

12 5/8 × 28 3/8" (32.1 × 72.1 cm)

Niki Charitable Art Foundation, Santee



NIKI DE SAINT PHALLE (French and American, 1930–2002)

Sticker

c. 1974

Serigraphed vinyl

9 13/16 × 6 7/8" (24.9 × 17.5 cm)

Niki Charitable Art Foundation, Santee



NIKI DE SAINT PHALLE (French and American, 1930–2002)

Sticker

c. 1991

Serigraphed vinyl

9 13/16 × 6 15/16" (24.9 × 17.6 cm)

Niki Charitable Art Foundation, Santee



NIKI DE SAINT PHALLE (French and American, 1930–2002)

Sticker

1995–1996

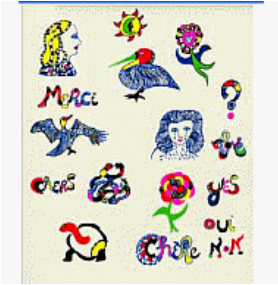
Serigraphed vinyl

15 3/4 × 13 3/8" (40 × 34 cm)

Niki Charitable Art Foundation, Santee

Niki de Saint Phalle: Structures for Life

MoMA PS1, March 11, 2021 - September 06, 2021



NIKI DE SAINT PHALLE (French and American, 1930–2002)

Sticker

1995–1996

Serigraphed vinyl

15 3/4 × 13 3/8" (40 × 34 cm)

Niki Charitable Art Foundation, Santee



NIKI DE SAINT PHALLE (French and American, 1930–2002)

Sticker

1995–1996

Serigraphed vinyl

15 3/4 × 13 3/8" (40 × 34 cm)

Niki Charitable Art Foundation, Santee



NIKI DE SAINT PHALLE (French and American, 1930–2002)

Sticker

c. 1974

Serigraphed vinyl

9 13/16 × 6 7/8" (24.9 × 17.5 cm)

Niki Charitable Art Foundation, Santee



NIKI DE SAINT PHALLE (French and American, 1930–2002)

Sticker

c. 1974

Serigraphed vinyl

9 13/16 × 6 7/8" (24.9 × 17.5 cm)

Niki Charitable Art Foundation, Santee



NIKI DE SAINT PHALLE (French and American, 1930–2002)

Nana ballon (yellow/black body, orange, white stripe suit)

1968

Silkscreen on vinyl

32 11/16 × 21 1/4" (83 × 54 cm)

Niki Charitable Art Foundation, Santee

Niki de Saint Phalle: Structures for Life

MoMA PS1, March 11, 2021 - September 06, 2021



NIKI DE SAINT PHALLE (French and American, 1930–2002)
Sticker
c. 1974
Serigraphed vinyl
9 13/16 × 6 7/8" (24.9 × 17.5 cm)
Niki Charitable Art Foundation, Santee



NIKI DE SAINT PHALLE (French and American, 1930–2002)
Guns
2001
Lithograph and stickers
22 7/16 × 24 9/16" (57 × 62.4 cm)
Courtesy Salon 94, New York



NIKI DE SAINT PHALLE (French and American, 1930–2002)
George W. Bush
2001
Lithograph and stickers
22 7/16 × 24 7/16" (57 × 62.1 cm)
Courtesy Salon 94, New York



NIKI DE SAINT PHALLE (French and American, 1930–2002)
Global Warming
2001
Lithograph and stickers
22 1/4 × 24 7/16" (56.5 × 62.1 cm)
Courtesy Salon 94, New York



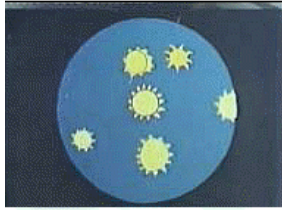
NIKI DE SAINT PHALLE (French and American, 1930–2002)
Abortion - Freedom of Choice (Population Explosion)
n.d.
Lithograph and stickers
22 1/4 × 24 5/8" (56.5 × 62.5 cm)
Courtesy Salon 94, New York

Niki de Saint Phalle: Structures for Life

MoMA PS1, March 11, 2021 - September 06, 2021



NIKI DE SAINT PHALLE (French and American, 1930–2002)
La mort n'existe pas, Life is Eternal
2001
Serigraph and stickers
24 1/4 × 18 7/8" (61.6 × 48 cm)
Courtesy Salon94, New York



NIKI DE SAINT PHALLE (French and American, 1930–2002)
My Life
1991
Video (color, sound)
25 min.
Niki Charitable Art Foundation, Santee



MICHIKO MATSUMOTO (Japanese, born 1950)
Niki with "Clarice Again" at her front garden, outside of Paris, France
1981
Gelatin silver print
12 3/16 × 8 1/4" (31 × 21 cm)
Courtesy the artist



MICHIKO MATSUMOTO (Japanese, born 1950)
Niki at her studio, outside of Paris, France
1981
Gelatin silver print
8 3/16 × 12 3/16" (20.8 × 31 cm)
Courtesy the artist



MICHIKO MATSUMOTO (Japanese, born 1950)
Niki at her bathroom, outside of Paris, France
1981
Gelatin silver print
8 7/16 × 12 5/8" (21.5 × 32 cm)
Courtesy the artist

Niki de Saint Phalle: Structures for Life

MoMA PS1, March 11, 2021 - September 06, 2021



MICHIKO MATSUMOTO (Japanese, born 1950)
Niki with her crew at The Emperor in the Tarot Garden, Tuscany, Italy
1985
Gelatin silver print
8 7/16 × 12 3/8" (21.4 × 31.5 cm)
Courtesy the artist



MICHIKO MATSUMOTO (Japanese, born 1950)
Niki at The High Priestess in the Tarot Garden, Tuscany, Italy
1985
Gelatin silver print
8 3/8 × 12 3/8" (21.3 × 31.5 cm)
Courtesy the artist



NIKI DE SAINT PHALLE (French and American, 1930–2002)
La femme et L'oiseau fontaine
1967-88
Painted polyester resin
Two parts: 137 3/4 × 118 1/8 × 82 5/8" (349.9 × 300 × 209.9 cm)
Courtesy Galerie Mitterrand, Paris; Galerie GP & N Vallois, Paris; and Salon 94, New York