

# The Museum of Modern Art

## Joseph Yoakum: What I Saw

The Art Institute of Chicago, June 12, 2021 - October 18, 2021

The Museum of Modern Art, New York, November 21, 2021 - March 19, 2022

The Menil Collection, April 22, 2022 - August 07, 2022

### Entrance



JOSEPH E. YOAKUM (American, 1891 – 1972)

*Mt Annaconda in Annaconda Mtn Range near by Annaconda Montana*  
stamped 1968

Purple and black ballpoint pen, black and blue fountain pen, and colored pencil on paper

12 × 17 15/16" (30.5 × 45.5 cm)

Collection of Christina Ramberg and Phil Hanson



JOSEPH E. YOAKUM (American, 1891 – 1972)

*What I Saw in Alberta B.C. Pacific Coastle Range*  
n.d.

Watercolor, graphite pencil, and blue ballpoint pen on paper

8 15/16 × 11 15/16" (22.7 × 30.4 cm)

The Art Institute of Chicago, bequest of Whitney Halstead



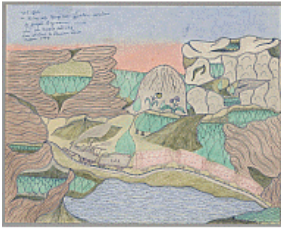
JOSEPH E. YOAKUM (American, 1891 – 1972)

*Back Where I Were Born 2/20-1888 AD*  
1965

Blue ballpoint pen, watercolor, and varnish on paper

11 15/16 × 17 15/16" (30.3 × 45.5 cm)

The Art Institute of Chicago, bequest of Whitney Halstead



JOSEPH E. YOAKUM (American, 1891 – 1972)  
*Mt Elk in Rainy Mtn Range near Lawton Oklahoma*  
stamped 1968

Blue and black fountain pen, purple ballpoint pen, colored pencil, and pastel on paper

19 1/8 × 24 1/8" (48.5 × 61.2 cm)

Collection of Gladys Nilsson and Jim Nutt

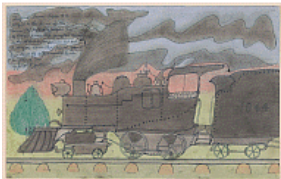


JOSEPH E. YOAKUM (American, 1891 – 1972)  
*An Official Train on Santife Rail Road Entering Belle Plains Arizona*  
stamped 1970

Red and blue felt-tip pen, blue ballpoint pen, and pastel on paper

11 13/16 × 19" (30 × 48.3 cm)

The Art Institute of Chicago, bequest of Whitney Halstead



JOSEPH E. YOAKUM (American, 1891 – 1972)  
*The First Steam Engine to Be Assigned to the Service of the Kansas City Ft Scott and Memphis Run between Kansas City and Springfield Missouri on the St Louis and Sanfrancisco Rail Road Pulling the Kansas City and Florida Special from Kansas City to Jackson in Year 1901*  
n.d.

Black fountain pen, graphite pencil, pastel, and colored pencil on paper

11 15/16 × 19 1/16" (30.4 × 48.4 cm)

Collection of the Roger Brown Study Collection



JOSEPH E. YOAKUM (American, 1891 – 1972)  
*Prairie Mounds in Western Iowa on Chicago Milwauke and St Paul R.Y.*  
n.d.

Blue and black fountain pen, black ballpoint pen, graphite pencil, pastel, and watercolor

11 1/8 × 31 1/2" (28.2 × 80 cm)

Collection of Daniel Halkin



JOSEPH E. YOAKUM (American, 1891 – 1972)  
*An Alaskan Passenger Sail Boat While in Vancouver British Columbia Canada*  
1969

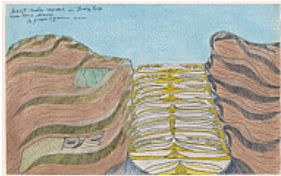
Blue fountain pen, pastel, and colored pencil on paper

10 1/16 × 8 1/16" (25.5 × 20.4 cm)

Collection of Gladys Nilsson and Jim Nutt



JOSEPH E. YOAKUM (American, 1891 – 1972)  
*The Open Gate to the West in Rocky Mtn Range near Pueblo Colorado*  
stamped 1966  
Blue fountain pen, blue ballpoint pen, pastel, and colored pencil on paper  
12 1/16 × 18" (30.7 × 45.7 cm)  
Collection of Gladys Nilsson and Jim Nutt



JOSEPH E. YOAKUM (American, 1891 – 1972)  
*Granit Center Mound in Rocky Range near Nome Alaska*  
stamped 1970  
Black, blue, and purple ballpoint pen, black fountain pen, yellow felt-tip pen, pastel, and colored pencil on paper  
11 7/8 × 19 1/16" (30.1 × 48.4 cm)  
The Art Institute of Chicago, bequest of Whitney Halstead



JOSEPH E. YOAKUM (American, 1891 – 1972)  
*Mt Godwinanstem in Karakoram Range near Asrinagar E India in Asia*  
stamped 1968  
Black fountain pen, colored pencil, and pastel on paper  
19 × 12 3/16" (48.3 × 31 cm)  
The Art Institute of Chicago, bequest of Whitney Halstead



JOSEPH E. YOAKUM (American, 1891 – 1972)  
*High Way #281 in Eastern Portion of California through Mojave Desert*  
stamped 1968  
Blue fountain pen, black ballpoint pen, colored pencil, and pastel on paper  
11 7/8 × 19 1/8" (30.2 × 48.5 cm)  
Collection of Christina Ramberg and Phil Hanson



JOSEPH E. YOAKUM (American, 1891 – 1972)  
*Chorro Valley San Luis Obispo County Paso Robles California*  
n.d.  
Black ballpoint pen, black fountain pen, and watercolor on paper  
9 15/16 × 7 15/16" (25.3 × 20.1 cm)  
Collection of Gladys Nilsson and Jim Nutt



JOSEPH E. YOAKUM (American, 1891 – 1972)

*Grizzly Gulch Valley Ohansburg Vermont*

n.d.

Black ballpoint pen and watercolor on paper

7 7/8 × 9 7/8" (20 × 25.1 cm)

The Museum of Modern Art, New York. Gift of the Raymond K. Yoshida Living Trust and Kohler Foundation, Inc.



JOSEPH E. YOAKUM (American, 1891 – 1972)

*Moon Valley Mtn in Pugget Sounds near Columbia Sounds Washington*

1967

Carbon transfer, black colored pencil, blue ballpoint pen, blue felt-tip pen, and pastel on paper

11 13/16 × 17 15/16" (30 × 45.5 cm)

The Art Institute of Chicago, gift of Raymond K. Yoshida Living Trust and Kohler Foundation, Inc.



JOSEPH E. YOAKUM (American, 1891 – 1972)

*Mt Sinai at Sea Port on Gulf of Aquaba near Dhant al Haii of Saudi Arabia in Asia*

stamped 1968

Blue and black ballpoint pen, pastel, and colored pencil on paper

11 7/8 × 19 1/16" (30.2 × 48.4 cm)

Collection of Gladys Nilsson and Jim Nutt



JOSEPH E. YOAKUM (American, 1891 – 1972)

*Mt Tara Piva near Biffel Montenegro Proviance in Yugoslavia E and Asia*

stamped 1967

Purple and blue ballpoint pen, black fountain pen, colored pencil, graphite pencil, and pastel on paper

11 7/8 × 17 15/16" (30.2 × 45.6 cm)

Collection of Christina Ramberg and Phil Hanson



JOSEPH E. YOAKUM (American, 1891 – 1972)

*EP Leverest in Himilaya Mtn Range near Gyangtse East India Asia*

stamped 1968

Purple, black, and blue ballpoint pen, black fountain pen, colored pencil, and pastel on paper

19 × 11 15/16" (48.2 × 30.3 cm)

Collection of Gladys Nilsson and Jim Nutt



JOSEPH E. YOAKUM (American, 1891 – 1972)  
*Mt Makkah near Village Mecca of Sudi Arabia SE Asia*  
stamped 1968

Blue felt-tip pen, black fountain pen, colored pencil, and pastel on  
paperboard  
14 1/16 × 21 15/16" (35.7 × 55.8 cm)  
Collection of Gladys Nilsson and Jim Nutt



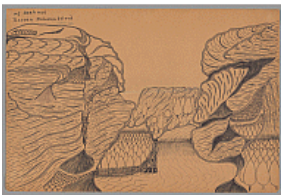
JOSEPH E. YOAKUM (American, 1891 – 1972)  
*Rain Bow Bridge in in Bryce Canyon National Park near Henriville Utah*  
stamped 1968

Brown ballpoint pen, black fountain pen, colored pencil, and pastel on  
paper  
12 3/16 × 19 1/8" (31 × 48.5 cm)  
Collection of the Roger Brown Study Collection



JOSEPH E. YOAKUM (American, 1891 – 1972)  
*Rain Bow Bridge Utah*

n.d.  
Blue ballpoint pen on paper  
8 × 10" (20.3 × 25.4 cm)  
The Art Institute of Chicago, bequest of Whitney Halstead



JOSEPH E. YOAKUM (American, 1891 – 1972)  
*Mt Brahmoi Nassau Bahama Island*  
stamped 1964

Black fountain pen, black ballpoint pen, and graphite pencil on paper  
12 1/16 × 18" (30.6 × 45.7 cm)  
Collection of Christina Ramberg and Phil Hanson

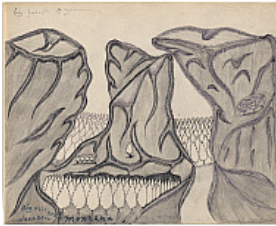


JOSEPH E. YOAKUM (American, 1891 – 1972)  
*Saw Toot Mtn Montana*

n.d.  
Blue ballpoint pen on paper  
8 1/16 × 10 1/16" (20.4 × 25.5 cm)  
Collection of the Roger Brown Study Collection



JOSEPH E. YOAKUM (American, 1891 – 1972)  
*Wahoo Valley near Holdenville Oklahoma*  
n.d.  
Blur ballpoint pen and watercolor on paper  
7 15/16 × 9 15/16" (20.2 × 25.3 cm)  
Collection of Richard Fraenkel



JOSEPH E. YOAKUM (American, 1891 – 1972)  
*Big Hole Pass Jackson Montana*  
n.d.  
Graphite pencil and black and blue ballpoint pen on paper  
8 × 10" (20.3 × 25.4 cm)  
The Museum of Modern Art, New York. Gift of the Raymond K. Yoshida Living Trust and Kohler Foundation, Inc.



JOSEPH E. YOAKUM (American, 1891 – 1972)  
*Syrian Desert Namrath Syria*  
n.d.  
Blue ballpoint pen and graphite pencil on paper  
8 × 10" (20.3 × 25.4 cm)  
The Art Institute of Chicago, bequest of Whitney Halstead



JOSEPH E. YOAKUM (American, 1891 – 1972)  
*Caucasus Mtn Range USSR—Russia*  
1965, stamped 1964  
Graphite pencil and black ballpoint pen on paper  
12 1/16 × 17 15/16" (30.6 × 45.6 cm)  
Collection of Karl Wirsum and Lorri Gunn



JOSEPH E. YOAKUM (American, 1891 – 1972)  
*The Great Mtn Range near Canberra Australia*  
stamped 1964  
Black and blue fountain pen and graphite pencil on paper  
12 × 17 15/16" (30.5 × 45.5 cm)  
Collection of Gladys Nilsson and Jim Nutt



JOSEPH E. YOAKUM (American, 1891 – 1972)  
*Monongahelia River Falls near River Side West Virginia*

n.d.

Blue fountain pen, blue ballpoint pen, colored pencil, and pastel on paper  
12 × 19 1/8" (30.5 × 48.5 cm)

Collection of Christina Ramberg and Phil Hanson



JOSEPH E. YOAKUM (American, 1891 – 1972)  
*Monongahelia River Falls near Riverside West Virginia*

by 1969, stamped 1964

Blue fountain pen, blue ballpoint pen, colored pencil, and pastel on paper  
11 7/8 × 17 13/16" (30.2 × 45.3 cm)

The Art Institute of Chicago, bequest of Whitney Halstead



JOSEPH E. YOAKUM (American, 1891 – 1972)  
*Mt Brock of Air Cave Pass near Carson City Nevada*

n.d.

Black fountain pen and graphite pencil on paper  
12 1/16 × 17 15/16" (30.6 × 45.6 cm)

The Art Institute of Chicago, bequest of Whitney Halstead



JOSEPH E. YOAKUM (American, 1891 – 1972)  
*Bitter Root Range near Boise Idaho*

1962

Black and blue ballpoint pen and colored pencil on paper  
8 1/16 × 10 1/16" (20.4 × 25.5 cm)

Collection of the Roger Brown Study Collection



JOSEPH E. YOAKUM (American, 1891 – 1972)  
*Crater Range San Salvador Peru*

by 1965

Blue ballpoint pen on paper  
8 × 10" (20.3 × 25.4 cm)

The Art Institute of Chicago, bequest of Whitney Halstead



JOSEPH E. YOAKUM (American, 1891 – 1972)  
*Crater Head Mts of Honolulu Hawaiiia*  
stamped 1969  
Graphite pencil and black ballpoint pen on paper  
Sheet: 9 × 12" (22.9 × 30.5 cm)  
Collection of Cheryl Cipriani



JOSEPH E. YOAKUM (American, 1891 – 1972)  
*Crater Head Mtns of Honolulu Hawaiiia*  
stamped 1969  
Carbon transfer, black ballpoint pen, and pastel on paper  
9 × 11 3/4" (22.8 × 29.9 cm)  
The Art Institute of Chicago



JOSEPH E. YOAKUM (American, 1891 – 1972)  
*Grand Coulee Dam in Columbia River near Olympia Washington*  
1963  
Blue and black fountain pen and watercolor on paper  
12 × 17 15/16" (30.5 × 45.6 cm)  
Collection of the Roger Brown Study Collection



JOSEPH E. YOAKUM (American, 1891 – 1972)  
*Grand Coulee Dam on Columbia River Washington Stat*  
n.d.  
Purple fountain pen and watercolor on paper  
8 15/16 × 12" (22.7 × 30.5 cm)  
Collection of the Roger Brown Study Collection



JOSEPH E. YOAKUM (American, 1891 – 1972)  
*Coulee Dam on Columbia River near Olympia Wash*  
n.d.  
Watercolor and graphite pencil on paper  
8 15/16 × 11 15/16" (22.7 × 30.4 cm)  
Collection of Richard Fraenkel





JOSEPH E. YOAKUM (American, 1891 – 1972)

*Arabian Desert near Sudi Arabia*

stamped 1964

Blue fountain pen, blue ballpoint pen, watercolor, colored pencil, and  
varnish on paper

11 7/8 × 17 13/16" (30.2 × 45.3 cm)

Collection of Christina Ramberg and Phil Hanson



JOSEPH E. YOAKUM (American, 1891 – 1972)

*The Flying Saucer in 1958*

n.d.

Carbon transfer, red and blue felt-tip pen, blue ballpoint pen, graphite pencil, colored pencil, and pastel on paper

11 13/16 × 9 7/16" (30 × 24 cm)

Collection of the Roger Brown Study Collection



JOSEPH E. YOAKUM (American, 1891 – 1972)

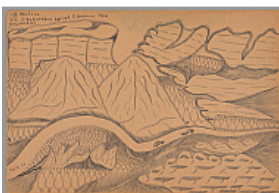
*Flying Saucer in 1958*

n.d.

Purple and blue felt-tip pen, pastel, colored pencil, and blue ballpoint pen on paper

11 7/8 × 9 5/8" (30.2 × 24.5 cm)

The Art Institute of Chicago, bequest of Whitney Halstead



JOSEPH E. YOAKUM (American, 1891 – 1972)

*U.S. Route 66 Via Albuquerque New Mexico*

1966, stamped 1964

Black fountain pen and graphite pencil on paper

12 × 17 15/16" (30.5 × 45.6 cm)

Collection of Karl Wirsum and Lorri Gunn



JOSEPH E. YOAKUM (American, 1891 – 1972)

*Mt Thousand Lakes in Bryce Canyon National Park near Hawksville Utah*

stamped 1968

Blue fountain pen, black ballpoint pen, colored pencil, and pastel on paper

Sheet: 12 × 19 1/16" (30.5 × 48.4 cm)

Frame: 20 1/4 × 26 5/8" (51.4 × 67.6 cm)

Collection of Christina Ramberg and Phil Hanson



JOSEPH E. YOAKUM (American, 1891 – 1972)

*Gascanade River Passing by the Town of Newburg Missouri on St Louis and Sanfrancisco Rail Way*

stamped 1970 (?)

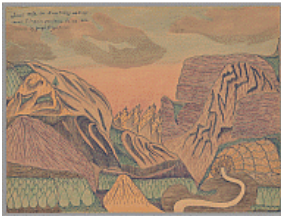
Red and black felt-tip pen, blue ballpoint pen, pastel, colored pencil, and graphite pencil on paper

12 × 19 1/8" (30.5 × 48.6 cm)

Collection of Cynthia Carlson



JOSEPH E. YOAKUM (American, 1891 – 1972)  
*Wilks Land in East Sector of Antarctica Continents on Rose Sea and Ice Shelf Cliffs of the Two Sectors Discovery Since Australia and New Zealand*  
stamped 1969  
Black felt-tip pen, blue fountain pen, purple ballpoint pen, pastel, and colored pencil on paper  
12 × 18 7/8" (30.5 × 48 cm)  
Collection of Gladys Nilsson and Jim Nutt



JOSEPH E. YOAKUM (American, 1891 – 1972)  
*Jehol Mtn in Kuntsing Mtn Range near Tsingkin Province China Asia*  
stamped 1965  
Blue fountain pen, black ballpoint pen, graphite pencil, and colored pencil on paper  
18 × 27 3/16" (45.7 × 69 cm)  
Collection of Gladys Nilsson and Jim Nutt



JOSEPH E. YOAKUM (American, 1891 – 1972)  
*Mt Colbart of Nome Alaska*  
n.d.  
Blue ballpoint pen, pastel, and colored pencil on paper  
Sheet: 12 × 19" (30.5 × 48.3 cm)  
Frame: 16 3/4 × 23 3/4" (42.5 × 60.3 cm)  
Collection of Cheryl Cipriani



JOSEPH E. YOAKUM (American, 1891 – 1972)  
*Twin Crater Mts near Lima Peru*  
n.d.  
Blue fountain pen, colored pencil, and pastel on paper  
11 15/16 × 17 11/16" (30.3 × 45 cm)  
Collection of Christina Ramberg and Phil Hanson



JOSEPH E. YOAKUM (American, 1891 – 1972)  
*Mt Atzmon on Border of Lebanon and Palestine SE. A.*  
stamped 1968  
Purple and black ballpoint pen, pastel, and colored pencils on paper  
19 1/16 × 24 1/8" (48.4 × 61.2 cm)  
Collection of Gladys Nilsson and Jim Nutt



JOSEPH E. YOAKUM (American, 1891 – 1972)  
*Mt Pikes Peak the Mtn of Pleasure near Colorado Springs Colorado  
Highest Foot Bridge in U.S.A.*

n.d.

Blue and black ballpoint pen, pastel, and colored pencil on paper  
19 1/16 × 11 15/16" (48.4 × 30.3 cm)

The Art Institute of Chicago, gift of the Raymond K. Yoshida Living Trust  
and Kohler Foundation, Inc.



JOSEPH E. YOAKUM (American, 1891 – 1972)

*Mt Cloubelle Jamaca of West India*

stamped 1969

Black felt-tip pen, blue fountain pen, black and purple ballpoint pen,  
colored pencil, and pastel on paper  
12 × 9 7/16" (30.5 × 24 cm)

Collection of Gladys Nilsson and Jim Nutt



JOSEPH E. YOAKUM (American, 1891 – 1972)

*The Cyclone That Struck Susanville California in Year of 1903*

stamped 1970

Black felt-tip pen, black fountain pen, black ballpoint pen, pastel, and  
colored pencil on paper  
12 3/16 × 19" (31 × 48.2 cm)

Collection of Gladys Nilsson and Jim Nutt



JOSEPH E. YOAKUM (American, 1891 – 1972)

*A Cyclone in Action at Iola Kansas in Year of 1920*

1969

Blue fountain pen and pastel on paper  
12 × 19" (30.5 × 48.2 cm)

The Art Institute of Chicago, bequest of Whitney Halstead



JOSEPH E. YOAKUM (American, 1891 – 1972)

*The Home of Wm F Cody Buffalo Bill near Town of North Platt Nebraska*

n.d.

Blue fountain pen, blue ballpoint pen, pastel, and colored pencil on paper  
11 7/8 × 18" (30.2 × 45.7 cm)

Collection of Richard Fraenkel



JOSEPH E. YOAKUM (American, 1891 – 1972)  
*Ground Floor of Grand Canyon Colorado River near Arizona State Line*  
stamped 1964  
Black and blue fountain pen, colored pencil, and pastel on paper  
12 × 17 15/16" (30.5 × 45.6 cm)  
Collection of Gladys Nilsson and Jim Nutt



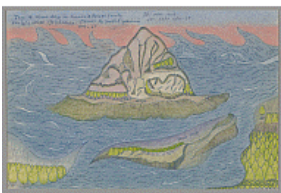
JOSEPH E. YOAKUM (American, 1891 – 1972)  
*Untitled*  
n.d.  
Blue fountain pen, blue ballpoint pen, and brown felt-tip pen on paper  
11 × 8 7/16" (27.9 × 21.4 cm)  
The Art Institute of Chicago, bequest of Whitney Halstead



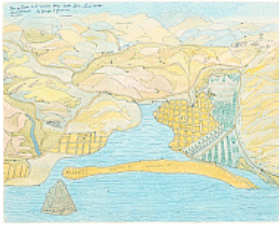
JOSEPH E. YOAKUM (American, 1891 – 1972)  
*Poverty Hollar in Ozark Mts near Luck Green County Missouri*  
1967  
Blue and green ballpoint pen, blue felt-tip pen, colored pencil, and pastel  
on paper  
11 13/16 × 17 15/16" (30 × 45.5 cm)  
Collection of Karl Wirsum and Lorri Gunn



JOSEPH E. YOAKUM (American, 1891 – 1972)  
*This of Moro Bay in San Luis Obispo County San Luis Obispo California*  
1965  
Carbon transfer and blue fountain pen on paper  
12 1/16 × 18 1/16" (30.7 × 45.8 cm)  
The Art Institute of Chicago, bequest of Whitney Halstead



JOSEPH E. YOAKUM (American, 1891 – 1972)  
*This of Moro Bay in San Luis Obispo County San Luis Obispo California*  
1967  
Carbon transfer, blue felt-tip pen, blue and purple ballpoint pen, pastel,  
and colored pencil on paper  
11 15/16 × 17 15/16" (30.3 × 45.6 cm)  
Collection of Gladys Nilsson and Jim Nutt



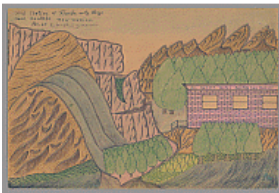
JOSEPH E. YOAKUM (American, 1891 – 1972)  
*Moro Rock and Morro Bay near San-Luis Obispo Californid*  
 n.d.  
 Blue fountain pen, blue and brown ballpoint pen, pastel, and colored pencil on paper  
 19 × 24" (48.3 × 61 cm)  
 Collection of KAWS



JOSEPH E. YOAKUM (American, 1891 – 1972)  
*Bay Wood Park Sub Division on Moro Bay at San Luis Obispo in San Luis Obispo County California*  
 n.d.  
 Black fountain pen, colored pencil, and pastel on paper  
 12 3/16 × 19 1/16" (30.9 × 48.4 cm)  
 The Art Institute of Chicago, gift of the Raymond K. Yoshida Living Trust and Kohler Foundation, Inc.



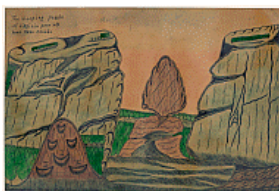
JOSEPH E. YOAKUM (American, 1891 – 1972)  
*Deming Suburb of New Mexico*  
 stamped 1968  
 Blue ballpoint pen and pastel on paper  
 11 15/16 × 19 1/16" (30.3 × 48.4 cm)  
 The Art Insitute of Chicago, gift of Raymond K. Yoshida Living Trust and Kohler Foundation, Inc.



JOSEPH E. YOAKUM (American, 1891 – 1972)  
*Mid Portion of Florida Mtn Range near Santafe New Mexico*  
 1965  
 Blue fountain pen, purple ballpoint pen, graphite pencil, colored pencil, and pastel on paper  
 12 × 17 15/16" (30.5 × 45.6 cm)  
 Collection of Gladys Nilsson and Jim Nutt



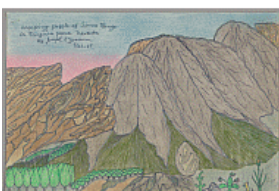
JOSEPH E. YOAKUM (American, 1891 – 1972)  
*Weeping Pebble Nevada on Lak Shasta*  
 n.d.  
 Watercolor, blue ballpoint pen, graphite pencil, and varnish on paper  
 7 3/16 × 10 7/16" (18.2 × 26.5 cm)  
 The Art Institute of Chicago, bequest of Whitney Halstead



JOSEPH E. YOAKUM (American, 1891 – 1972)  
*The Weeping Pebble of Virginia Peak Mtn near Reno Nevada*  
n.d.  
Blue ballpoint pen, watercolor, and varnish on paper  
Sheet: 12 × 18" (30.5 × 45.7 cm)  
Frame: 16 3/4 × 22 1/2" (42.5 × 57.2 cm)  
Collection of Cheryl Cipriani

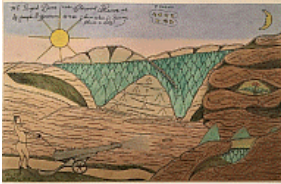


JOSEPH E. YOAKUM (American, 1891 – 1972)  
*Weeping Pebble East Side Sirrea Range Nevada*  
stamped 1964  
Black ballpoint pen and watercolor on paper  
12 × 17 15/16" (30.5 × 45.5 cm)  
The Art Institute of Chicago, gift of the Raymond K. Yoshida Living Trust  
and Kohler Foundation, Inc.



JOSEPH E. YOAKUM (American, 1891 – 1972)  
*Weeping Pebble of Sirrea Range in Virginia Park Nevada*  
1967  
Carbon transfer, blue fountain pen, purple ballpoint pen, pastel, and  
colored pencil on paper  
11 7/8 × 17 15/16" (30.1 × 45.5 cm)  
Collection of Gladys Nilsson and Jim Nutt

## Gallery 3



JOSEPH E. YOAKUM (American, 1891 – 1972)  
*Mt Puyed Dome near Clermont France WE (Some Where in France Theres a Lily?)*  
stamped 1970  
Black felt-tip pen, black ballpoint pen, blue fountain pen, pastel, and colored pencil on paper  
12 3/16 × 19 1/16" (31 × 48.4 cm)  
Collection of Gladys Nilsson and Jim Nutt



JOSEPH E. YOAKUM (American, 1891 – 1972)  
*Straits of Messina between Italy and Sicily between Tynhenian and Mediterranean Seas*  
stamped 1968  
Gray felt-tip pen, black fountain pen, blue ballpoint pen, pastel, and colored pencil on paper  
11 13/16 × 17 15/16" (30 × 45.5 cm)  
Collection of Christina Ramberg and Phil Hanson



JOSEPH E. YOAKUM (American, 1891 – 1972)  
*This Gunboat Were Stationed at Santiago De Cuba on Guantanamo Bay until Beginning of Worlds War One*  
stamped 1969  
Blue felt-tip pen, black and blue ballpoint pen, blue fountain pen, pastel, and colored pencil on paper  
12 1/16 × 19" (30.7 × 48.3 cm)  
The Art Institute of Chicago, bequest of Whitney Halstead



JOSEPH E. YOAKUM (American, 1891 – 1972)  
*Mt Baykal of Yablony Mtn Range near Ulan-Ude near Lake Baykal of Lower Siberia Russia E Asia*  
1969  
Blue felt-tip pen, blue fountain pen, purple ballpoint pen, and pastel on paper  
18 7/8 × 12 3/16" (48 × 30.9 cm)  
Collection of Gladys Nilsson and Jim Nutt



JOSEPH E. YOAKUM (American, 1891 – 1972)  
*Beulah Dudley 1st Negro Woman to Win Golff Record in Year 1927*  
stamped 1970  
Blue felt-tip pen, blue and black ballpoint pen, pastel, and colored pencil on paper  
11 11/16 × 9" (29.7 × 22.8 cm)  
The Art Institute of Chicago, bequest of Whitney Halstead





JOSEPH E. YOAKUM (American, 1891 – 1972)  
*Nat King Cole*  
n.d.  
Blue ballpoint pen and watercolor on paper  
12 × 8 15/16" (30.5 × 22.7 cm)  
The Art Institute of Chicago, bequest of Whitney Halstead



JOSEPH E. YOAKUM (American, 1891 – 1972)  
*Harold Beaman Known as Chick First Lineman and Major Comedian with Wm. McCabe and Famous Georgia Minstrel Shows from 1902 to 1923*  
n.d.  
Graphite pencil and pastel on paper  
17 7/8 × 12" (45.4 × 30.5 cm)  
Collection of the Roger Brown Study Collection



JOSEPH E. YOAKUM (American, 1891 – 1972)  
*Rock of Gibraltar*  
n.d.  
Blue fountain pen, black ballpoint pen, pastel, and watercolor on paper  
12 1/16 × 18 1/8" (30.6 × 46 cm)  
Collection of the Roger Brown Study Collection



JOSEPH E. YOAKUM (American, 1891 – 1972)  
*The Wonder of Assirea 310 BC*  
n.d.  
Watercolor and blue ballpoint pen on paper  
11 × 8 1/2" (27.9 × 21.6 cm)  
The Art Institute of Chicago, bequest of Whitney Halstead



JOSEPH E. YOAKUM (American, 1891 – 1972)  
*Chieff Gray Eagle Squaw Wife Ogalla of Jicarilla Tribe Reservation North of Concord New Hampshire*  
n.d.  
Carbon transfer, blue felt-tip pen, blue and black fountain pen, colored pencil, and pastel on paper  
11 7/8 × 17 15/16" (30.2 × 45.6 cm)  
The Art Institute of Chicago, bequest of Whitney Halstead



JOSEPH E. YOAKUM (American, 1891 – 1972)  
*Breck Girl*  
n.d.  
Graphite pencil and color offset lithograph on paper  
11 × 8 5/16" (28 × 21.1 cm)  
The Art Institute of Chicago



JOSEPH E. YOAKUM (American, 1891 – 1972)  
*Ella Fitzgerald Moovie Star*  
1966  
Carbon transfer, graphite pencil, and colored pencil on paper  
11 7/8 × 9" (30.2 × 22.8 cm)  
The Art Institute of Chicago, bequest of Whitney Halstead



JOSEPH E. YOAKUM (American, 1891 – 1972)  
*Luella Ocondo Secretary of American Indian Center*  
stamped 1965  
Carbon transfer, blue ballpoint pen, and pastel on paper  
10 7/16 × 8 7/16" (26.5 × 21.4 cm)  
Collection of Gladys Nilsson and Jim Nutt



JOSEPH E. YOAKUM (American, 1891 – 1972)  
*American Zeppelin Flight from New York City to Paris France in Year 1939*  
1969  
Blue ballpoint pen, colored pencil, and pastel on paper  
11 15/16 × 19 1/16" (30.4 × 48.4 cm)  
The Art Institute of Chicago, bequest of Whitney Halstead



JOSEPH E. YOAKUM (American, 1891 – 1972)  
*Mt Grazian in Maritime Alps near Emonaco Tunnel France and Italy by Tunnel*  
stamped 1958  
Black ballpoint pen, blue felt-tip pen, and colored pencil on paper  
12 x 19" (30.5 x 48.3 cm)  
The Museum of Modern Art, New York. Gift of the Raymond K. Yoshida Living Trust and Kohler Foundation, Inc.



JOSEPH E. YOAKUM (American, 1891 – 1972)  
*Ozark Range at Kirkwood Missouri West Suburb of St Louis Mt Dillon*  
stamped 1964  
Blue fountain pen, black ballpoint pen, colored pencil, and pastel on paper  
Sheet: 11 15/16 × 17 15/16" (30.4 × 45.5 cm)  
20 1/8 × 28 5/8" (51.1 × 72.7 cm)  
Collection of Christina Ramberg and Phil Hanson



JOSEPH E. YOAKUM (American, 1891 – 1972)  
*Great Falls Montana Falls Are in Mission River*  
n.d.  
Blue fountain pen, blue ballpoint pen, watercolor, and varnish on paper  
12 × 17 15/16" (30.5 × 45.5 cm)  
Collection of Christina Ramberg and Phil Hanson



JOSEPH E. YOAKUM (American, 1891 – 1972)  
*Tampa Bay at Tampa Florida*  
1964  
Blue ballpoint pen on paper  
13 3/4 × 17 15/16" (35 × 45.5 cm)  
The Art Institute of Chicago, gift of Cynthia Carlson



JOSEPH E. YOAKUM (American, 1891 – 1972)  
*Crater Head Mtn in Andes Mtn Range near Santiag Chile South America*  
n.d.  
Purple and blue ballpoint pen, blue fountain pen, graphite pencil, and pastel on paper  
17 15/16 × 24 3/16" (45.5 × 61.5 cm)  
Collection of Gladys Nilsson and Jim Nutt



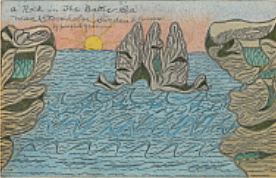
JOSEPH E. YOAKUM (American, 1891 – 1972)  
*English Channel between Southampton England and Le Havre France*  
1964  
Blue ballpoint pen, pastel, and colored pencil on paper  
11 15/16 × 19" (30.4 × 48.2 cm)  
Collection of Gladys Nilsson and Jim Nutt



JOSEPH E. YOAKUM (American, 1891 – 1972)  
*Turtle Dove Slew in Suwanee River Wilcox Florida*  
n.d.

Watercolor and blue ballpoint pen on paper  
8 × 10" (20.3 × 25.4 cm)

The Art Institute of Chicago, gift of Raymond K. Yoshida Living Trust and Kohler Foundation, Inc.



JOSEPH E. YOAKUM (American, 1891 – 1972)  
*A Rock in the Baltic Sea near Stockholm Sweden E. Europe*  
n.d.

Carbon transfer, black ballpoint pen, and colored pencil on paper  
12 x 19" (30.5 x 48.3 cm)

The Museum of Modern Art, New York. Gift of the Raymond K. Yoshida Living Trust and Kohler Foundation, Inc.



JOSEPH E. YOAKUM (American, 1891 – 1972)  
*Waianae Mtn Range Entrance to Pearl Harbor and Honolulu Oahu of Hawaiian Islands*  
stamped 1968

Blue felt-tip pen, blue ballpoint pen, pastel, and colored pencil on paper  
Sheet: 12 × 19 1/16" (30.5 × 48.4 cm)

Frame: 20 1/4 × 26 5/8" (51.4 × 67.6 cm)

Collection of Christina Ramberg and Phil Hanson



JOSEPH E. YOAKUM (American, 1891 – 1972)  
*The Woman of Assirea 310 BC*  
stamped 1967

Blue and black fountain pen, graphite pencil, colored pencil, and pastel on paper

19 1/8 × 12" (48.5 × 30.5 cm)

Collection of Gladys Nilsson and Jim Nutt

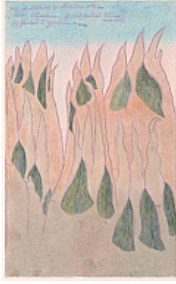


JOSEPH E. YOAKUM (American, 1891 – 1972)  
*Jessie Willard 2nd Challenge to Champion Fight with Jack Johnson for Worlds Heavy Weight Prize Fighting Champion Ship in Year 1917 and in 1921*  
stamped 1969

Black felt-tip pen, blue fountain pen, black ballpoint pen, and pastel on paper

11 15/16 × 18 7/8" (30.4 × 48 cm)

Collection of Gladys Nilsson and Jim Nutt



JOSEPH E. YOAKUM (American, 1891 – 1972)  
*Mt Suliwulai in Kunlun Mtn Era near Chiuchuan of East Central China East Asia*  
stamped 1971  
Purple felt-tip pen, blue ballpoint pen, pastel, and colored pencil on paper  
19 × 11 7/8" (48.3 × 30.2 cm)  
The Art Institute of Chicago, bequest of Whitney Halstead



JOSEPH E. YOAKUM (American, 1891 – 1972)  
*Mount Calvary*  
n.d.  
Watercolor, blue fountain pen, and blue ballpoint pen on paper  
17 15/16 × 23 7/8" (45.6 × 60.7 cm)  
The Art Institute of Chicago, bequest of Gwendolyn Dargel



JOSEPH E. YOAKUM (American, 1891 – 1972)  
*Cavalry Mountain*  
by 1964  
Carbon transfer, blue ballpoint pen, and blue felt-tip pen on paper  
11 7/8 × 17 13/16" (30.2 × 45.3 cm)  
The Art Institute of Chicago, bequest of Whitney Halstead



JOSEPH E. YOAKUM (American, 1891 – 1972)  
*Mt Calvalery near Jeruselam in SO East Asia*  
n.d.  
Blue fountain pen, blue and black ballpoint pen, colored pencil, and pastel on paperboard  
14 1/8 × 22 1/16" (35.8 × 56 cm)  
The Art Institute of Chicago, bequest of Whitney Halstead



JOSEPH E. YOAKUM (American, 1891 – 1972)  
*Sand Dunes, Arabian Desert*  
n.d.  
Blue fountain pen and watercolor on paper  
9 × 11 15/16" (22.8 × 30.4 cm)  
Collection of Christina Ramberg and Phil Hanson



JOSEPH E. YOAKUM (American, 1891 – 1972)  
*Sylvania Range Yugoslavia*  
by 1968  
Purple ballpoint pen and watercolor on paper  
9 × 12" (22.8 × 30.5 cm)  
Collection of the Roger Brown Study Collection



JOSEPH E. YOAKUM (American, 1891 – 1972)  
*Mt Blessing Game*  
1972  
Black ballpoint pen, red felt-tip pen, and pastel on paper  
14 × 10 7/8" (35.6 × 27.7 cm)  
The Art Institute of Chicago, bequest of Whitney Halstead



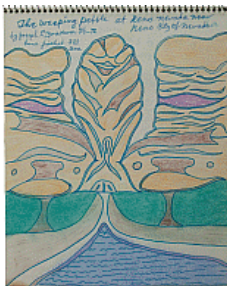
JOSEPH E. YOAKUM (American, 1891 – 1972)  
*Mt Lime Stones for Lime Killns at Springfield MO, p. 23 (recto) of Workbook D*  
1972

Colored felt-tip pen, pastel, graphite pencil, and blue ballpoint pen on paper  
10 7/8 × 14" (27.7 × 35.6 cm)  
The Art Institute of Chicago, bequest of Whitney Halstead



JOSEPH E. YOAKUM (American, 1891 – 1972)  
*Extremely Seenes near This Mountain Mt Olive #2, p. 4 (recto) of Workbook B*  
1972

Blue ballpoint pen, black fountain pen, and colored pencil on paper  
9 1/16 × 12" (23 × 30.5 cm)  
The Art Institute of Chicago, bequest of Whitney Halstead



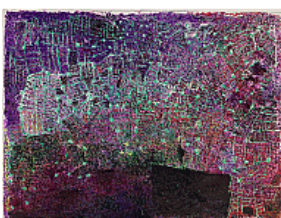
JOSEPH E. YOAKUM (American, 1891 – 1972)  
*The Weeping Pebble at Reno Nevada near Reno City of Nevada, p. 21 (recto) of Workbook A*  
1972

Blue felt-tip pen, pastel, and colored pencil on paper  
8 × 10" (20.3 × 25.4 cm)  
The Art Institute of Chicago, bequest of Whitney Halstead



JOSEPH E. YOAKUM (American, 1891 – 1972)  
*Untitled, p. 23 (rector) of Workbook C*  
1972

Black and blue ballpoint pen and colored pencil on paper  
9 × 11 15/16" (22.8 × 30.4 cm)  
The Art Institute of Chicago, bequest of Whitney Halstead



RAYED MOHAMED (American, born Yemen 1986)  
*Untitled*

n.d.  
Felt-tip pen on paper  
18 × 24" (45.7 × 61 cm)  
Courtesy the artist and AHRC NYC