

Fifth Floor, 1880s-1940s

5th Fl: 501, Motion and Illumination

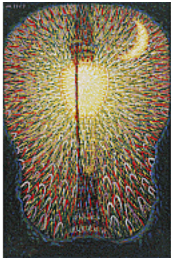


American Mutoscope and Biograph Company
Deutsche Mutoskop und Biograph G.m.b.H.

The Flying Train

1902

W19606



Giacomo Balla

Street Light

c. 1910-11 (dated on painting 1909)

Oil on canvas

68 3/4 x 45 1/4" (174.7 x 114.7 cm)

Hillman Periodicals Fund

7.1954



Émile Bernard

Iron Bridges at Asnières

1887

Oil on canvas

18 1/8 x 21 3/8" (45.9 x 54.2 cm)

Grace Rainey Rogers Fund

113.1962



Brassai (Gyula Halász)

Avenue de l'Observatoire. (Brouillard sur Paris, avenue de l'Observatoire)

1934

Gelatin silver print

15 11/16 x 19 13/16" (39.9 x 50.4 cm)

David H. McAlpin Fund

2549.1967



Brassai (Gyula Halász)

Fireworks on the Night of Longchamp

1936

Gelatin silver print

19 5/8 x 15 15/16" (49.9 x 40.5 cm)

David H. McAlpin Fund

2552.1967

Fifth Floor, 1880s-1940s

5th Fl: 501, Motion and Illumination



Jules Chéret

Saxoleine, Pétrole de Sûreté

1891

Lithograph

49 x 34 1/8" (124.5 x 86.7 cm)

Purchase

580.1954



Alvin Langdon Coburn

Leicester Square (The Old Empire Theater), London

1908

Photogravure

8 1/8 x 6 7/16" (20.7 x 16.3 cm)

Promised gift of Robert B. Menschel

PG437.2016



Hilaire-Germain-Edgar Degas

Pierre-Auguste Renoir and Stéphane Mallarmé

December 1895

Gelatin silver print

15 3/8 x 11 3/16" (39.1 x 28.4 cm)

Gift of Paul F. Walter

207.1989



Hilaire-Germain-Edgar Degas

Green Landscape

c. 1890

Monotype on paper

plate: 11 3/4 x 15 5/8" (29.9 x 39.7 cm); sheet: 12 3/8 x 15 7/8" (31.4 x 40.4 cm)

Louise Reinhardt Smith Bequest

19.1996



Frank Jay Haynes

Cinnabar Mountain, Devil's Slide

c. 1895

Albumen silver print

16 3/4 x 21 7/16" (42.6 x 54.5 cm)

Acquired through the generosity of Arthur M. Bullowa

167.1989

Fifth Floor, 1880s-1940s

5th Fl: 501, Motion and Illumination



Lewis W. Hine

National Child Labor Committee exhibition panel

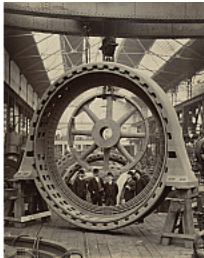
c. 1913

Gelatin silver print

5 13/16 × 2 13/16" (14.7 × 7.1 cm)

Gift of Herbert Weller

497.2013



Edward Hoole

Preston, England

c. 1900

Gelatin silver printing-out-paper print

14 9/16 × 11 9/16" (37 × 29.3 cm)

Acquired through the generosity of Pierre N. Leval

399.2005



Robert Howlett

Isambard Kingdom Brunel and the Launching Chains of the Great Eastern

1857

Albumen silver print from a glass negative

11 1/4 × 9 5/16" (28.6 × 23.6 cm)

Gift of Paul F. Walter

71.1993



Gertrude Käsebier

Edward Steichen

c. 1901

Platinum print

8 1/4 × 6 1/4" (20.9 × 15.8 cm)

Gift of Mrs. Hermine M. Turner

1221.1969



Louis Majorelle

Daum Frères, Nancy, France

"Nénuphar" table lamp

c. 1900

Gilt and patinated bronze and acid-etched glass

27 1/4 × 11 1/2 × 11 1/2" (69.2 × 29.2 × 29.2 cm)

Joseph H. Heil Bequest (by exchange)

113.1976.a-b

Fifth Floor, 1880s-1940s

5th Fl: 501, Motion and Illumination



Charles Marville

Parc Monceau (Lacarrière Model with Globe)

1870s

Albumen silver print

13 3/16 × 9 1/2" (33.6 × 24.2 cm)

Acquired through the generosity of Charles Heilbronn

872.2005



Charles Marville

Streetlamp, Oudry Model

1870s

Albumen silver print

13 9/16 × 9" (34.5 × 23 cm)

Lois and Bruce Zenkel Fund

873.2005



Charles Marville

Louvre (Passage to the Library)

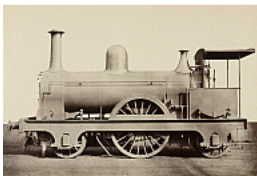
1870s

Albumen silver print

14 1/8 × 8 15/16" (36 × 22.8 cm)

Acquired through the generosity of Robert J. Fisher

875.2005



James Mudd

New South Wales Government Railway

1865

Albumen silver print

9 1/2 × 14 5/8" (24.8 × 37.1 cm)

Gift of David H. McAlpin, by exchange

27.1984



Edwin S. Porter

Coney Island at Night

1905

W1050

Fifth Floor, 1880s-1940s

5th Fl: 501, Motion and Illumination



William H. Rau

The New Stone Bridge over the Susquehanna River at Rockville, Pennsylvania

1900

Platinum print

16 5/8 × 59 1/16" (42.3 × 150 cm)

Lois and Bruce Zenkel Fund

327.1987



Richard Riemerschmid

Table Lamp

c. 1900

Brass

13 3/4 × 8 1/8" (34.9 × 20.6 cm)

Phyllis B. Lambert Fund

SC1.1958



Jacob August Riis

Lodgers in Bayard Street Tenement, Five Cents a Spot

1889

Gelatin silver print, printed 1957

6 3/16 × 4 3/4" (15.7 × 12 cm)

Gift of the Museum of the City of New York

338.1964



Jacob August Riis

The Man Slept in This Cellar for Four Years

1890

Gelatin silver print, printed 1957

6 3/16 × 4 3/4" (15.7 × 12.1 cm)

Gift of the Museum of the City of New York

341.1964



Jacob August Riis

Women in Elizabeth Police Street Station

1890

Gelatin silver print, printed 1957

6 3/8 × 4 15/16" (16.2 × 12.6 cm)

Gift of the Museum of the City of New York

342.1964

Fifth Floor, 1880s-1940s

5th Fl: 501, Motion and Illumination



Jacob August Riis

Ancient Lodger, Eldridge Street Police Station

1890

Gelatin silver print, printed 1958

4 3/4 × 6 5/16" (12.1 × 16 cm)

Gift of the Museum of the City of New York

172.1982



Edward Steichen

Richard Strauss

1904

Pigment print

16 3/4 × 13 3/4" (42.5 × 35 cm)

Gift of the artist

99.1962



Edward Steichen

Nocturne—Orangerie Staircase, Versailles

c. 1910

Direct carbon print

11 × 13 7/8" (27.9 × 35.2 cm)

Gift of the artist

38.1970



Alfred Stieglitz

Icy Night, New York

1898

Photogravure

5 1/16 × 6 3/8" (12.8 × 16.2 cm)

Transferred from the Museum Library

365.1976



Alfred Stieglitz

The Hand of Man

1902

Photogravure

9 1/2 × 12 9/16" (24.2 × 31.9 cm)

Purchase

401.1976

Fifth Floor, 1880s-1940s

5th Fl: 501, Motion and Illumination



Louis Comfort Tiffany

Table Lamp

c. 1900

Bronze and glass

18 x 15" (45.7 x 38.1 cm)

Phyllis B. Lambert Fund

273.1958



Unknown photographer

Untitled

1889

Albumen silver print (Kodak No. 1)

2 3/8" (6.1 cm)

Gift of Peter J. Cohen

670.2019.2



Unknown photographer

Untitled

1889

Albumen silver print (Kodak No. 1)

2 1/2" (6.3 cm)

Gift of Peter J. Cohen

670.2019.4



Unknown photographer

Untitled

1889

Albumen silver print (Kodak No. 1)

2 1/2" (6.3 cm)

Gift of Peter J. Cohen

670.2019.7



Félix Vallotton

Poker (Le Poker)

1896

Woodcut

composition: 7 x 8 3/4" (17.8 x 22.3 cm); sheet: 9 7/16 x 12 11/16" (24 x 32.3 cm)

Gift of William Rubin

543.1953

Fifth Floor, 1880s-1940s

5th Fl: 501, Motion and Illumination



Félix Vallotton

Money (L'Argent) from Intimacies (Intimités)

1897

Woodcut

composition: 7 x 8 7/8" (17.8 x 22.5 cm); sheet: 9 3/4 x 12 13/16" (24.7 x 32.6 cm)

Gift of Abby Aldrich Rockefeller

191.1954.5



Félix Vallotton

Laziness (La Paresse)

1896

Woodcut

composition: 7 x 8 13/16" (17.8 x 22.4 cm); sheet: 9 3/4 x 12 3/4" (24.7 x 32.4 cm)

Larry Aldrich Fund

193.1954



Édouard Vuillard

The Green Lamp

1893

Oil on board

8 1/4 x 10 1/4" (21 x 26 cm)

The William S. Paley Collection

SPC39.1990

Fifth Floor, 1880s-1940s

5th Fl: 502, Lillie P. Bliss



Paul Cézanne

The Bather

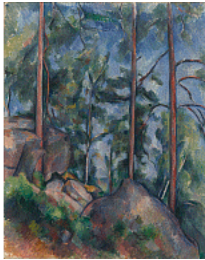
c. 1885

Oil on canvas

50 x 38 1/8" (127 x 96.8 cm)

Lillie P. Bliss Collection. Conservation was made possible by the Bank of America Art Conservation Project

1.1934



Paul Cézanne

Pines and Rocks (Fontainebleau?)

c. 1897

Oil on canvas

32 x 25 3/4" (81.3 x 65.4 cm)

Lillie P. Bliss Collection

16.1934



Paul Cézanne

Still Life with Apples

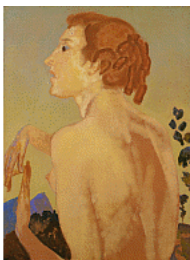
1895-98

Oil on canvas

27 x 36 1/2" (68.6 x 92.7 cm)

Lillie P. Bliss Collection

22.1934



Arthur B. Davies

The Wine Press

1918

Oil on canvas

32 1/4 x 24 1/4" (81.9 x 61.6 cm)

Lillie P. Bliss Collection

31.1934



Paul Gauguin

The Moon and the Earth

1893

Oil on burlap

45 x 24 1/2" (114.3 x 62.2 cm)

Lillie P. Bliss Collection

50.1934

Fifth Floor, 1880s-1940s

5th Fl: 502, Lillie P. Bliss



Paul Gauguin

Noa Noa (Fragrant Scent), state III/III, from the suite Noa Noa (Fragrant Scent)

1893–94

Woodcut

composition: 14 x 8 1/16" (35.5 x 20.5 cm); sheet: 15 1/2 x 9 5/8" (39.3 x 24.4 cm)

Lillie P. Bliss Collection

56.1934



Paul Gauguin

Te atua (The Gods), state III/III, from the suite Noa Noa (Fragrant Scent)

1893–94

Woodcut

composition: 8 1/16 x 14" (20.5 x 35.5 cm); sheet: 15 9/16 x 9 3/4" (39.6 x 24.7 cm)

Lillie P. Bliss Collection

60.1934



Vincent van Gogh

The Starry Night

Saint Rémy, June 1889

Oil on canvas

29 x 36 1/4" (73.7 x 92.1 cm)

Acquired through the Lillie P. Bliss Bequest (by exchange). Conservation was made possible by the Bank of America Art Conservation Project

472.1941



Edvard Munch

The Storm

1893

Oil on canvas

36 1/8 x 51 1/2" (91.8 x 130.8 cm)

Gift of Mr. and Mrs. H. Irgens Larsen and acquired through the Lillie P. Bliss Bequest (by exchange) and Abby Aldrich Rockefeller Funds

1351.1974

Fifth Floor, 1880s-1940s

5th Fl: 502, Lillie P. Bliss



Odilon Redon

Day (Le Jour) from Dreams (Songes)

1891

One from a portfolio of six lithographs on chine appliqué

composition: 8 1/4 x 6 1/8" (20.9 x 15.5 cm); sheet: 17 3/16 x 12 3/16"
(43.6 x 30.9 cm)

Lillie P. Bliss Collection

104.1934



Odilon Redon

Captive Pegasus (Pégase captif)

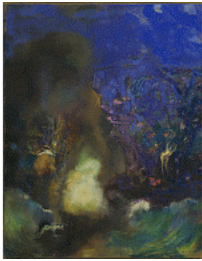
1889, published 1891

Lithograph with chine appliqué

composition: 13 3/8 x 11 5/8" (34 x 29.5 cm); sheet: 20 x 15 13/16"
(50.8 x 40.1 cm)

Lillie P. Bliss Collection

110.1934



Odilon Redon

Roger and Angelica

c. 1910

Pastel on paper on canvas

36 1/2 x 28 3/4" (92.7 x 73 cm)

Lillie P. Bliss Collection

111.1934



Georges-Pierre Seurat

Port-en-Bessin, Entrance to the Harbor

1888

Oil on canvas

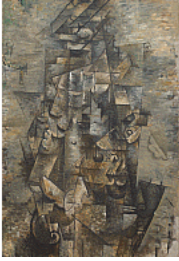
21 5/8 x 25 5/8" (54.9 x 65.1 cm)

Lillie P. Bliss Collection

126.1934

Fifth Floor, 1880s-1940s

5th Fl: 503, Picasso, Rousseau, and the Paris Avant-Garde



Georges Braque

Man with a Guitar

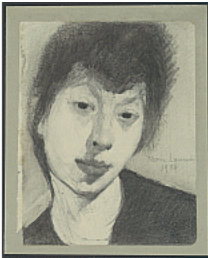
Céret, summer 1911-early 1912

Oil on canvas

45 3/4 x 31 7/8" (116.2 x 80.9 cm)

Acquired through the Lillie P. Bliss Bequest (by exchange)

175.1945



Marie Laurencin

Self-Portrait (Autoportrait)

1906

Pencil on paper

13 3/4 x 12 1/4" (34.9 x 31.1 cm)

Purchase

17.1953



Marie Laurencin

Self-Portrait (Autoportrait)

1906

Colored pencil and pencil on notebook paper

7 7/8 x 5" (19.8 x 12.5 cm)

Gift of Steven C. Rockefeller

591.1970



Pablo Picasso

Les Femmes d'Alger (O. J. R. Version O)

Paris, June-July 1907

Oil on canvas

8' x 7' 8" (243.9 x 233.7 cm)

Acquired through the Lillie P. Bliss Bequest (by exchange)

333.1939



Pablo Picasso

Woman's Head (Fernande)

Paris, fall 1909

Bronze

16 1/4 x 9 3/4 x 10 1/2" (41.3 x 24.7 x 26.6 cm)

Purchase

1632.1940

Fifth Floor, 1880s-1940s

5th Fl: 503, Picasso, Rousseau, and the Paris Avant-Garde



Pablo Picasso

Fruit Dish

Paris, winter 1908-09

Oil on canvas

29 1/4 x 24" (74.3 x 61 cm)

Acquired through the Lillie P. Bliss Bequest (by exchange)

263.1944



Pablo Picasso

"Ma Jolie"

Paris, winter 1911-12

Oil on canvas

39 3/8 x 25 3/4" (100 x 64.5 cm)

Acquired through the Lillie P. Bliss Bequest (by exchange)

176.1945



Pablo Picasso

Still Life with Liqueur Bottle

Horta de San Joan, August 1909

Oil on canvas

32 1/8 x 25 3/4" (81.6 x 65.4 cm)

Mrs. Simon Guggenheim Fund

147.1951



Pablo Picasso

Two Nudes

Paris, late 1906

Oil on canvas

59 5/8 x 36 5/8" (151.3 x 93 cm)

Gift of G. David Thompson in honor of Alfred H. Barr, Jr.

621.1959



Pablo Picasso

Boy Leading a Horse

Paris, 1905-06

Oil on canvas

7' 2 7/8" x 51 5/8" (220.6 x 131.2 cm)

The William S. Paley Collection

575.1964

Fifth Floor, 1880s-1940s

5th Fl: 503, Picasso, Rousseau, and the Paris Avant-Garde



Pablo Picasso

Girl with a Mandolin (Fanny Tellier)

Paris, late spring 1910

Oil on canvas

39 1/2 x 29" (100.3 x 73.6 cm)

Nelson A. Rockefeller Bequest

966.1979



Pablo Picasso

Bather

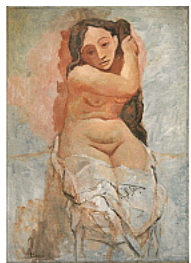
winter 1908-09

Oil on canvas

51 1/8 x 38 1/8" (129.8 x 96.8 cm)

Louise Reinhardt Smith Bequest

786.1995



Pablo Picasso

Woman Plaiting Her Hair

Paris, late summer or fall 1906

Oil on canvas

50 x 35 3/4" (127 x 90.8 cm)

Florene May Schoenborn Bequest

826.1996



Henri Rousseau

The Dream

1910

Oil on canvas

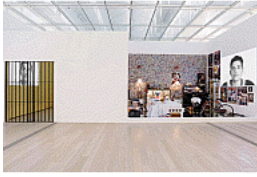
6' 8 1/2" x 9' 9 1/2" (204.5 x 298.5 cm)

Gift of Nelson A. Rockefeller

252.1954

Fifth Floor, 1880s-1940s

5th Fl: 516, Pepón Osorio's Badge of Honor



Pepón Osorio

Badge of Honor

1995

Two standard-definition videos (black and white, sound; 19:25 min.), prison bars, beds, steel toilet and sink, fabric, cigarette boxes, photographs, shoes, dresser, cabinet, nightstands, lamps, baseball cards, posters, reflective floor tile, trophies, air fresheners, clothes hamper, television monitor, basketballs, mountain bike, computer, plastic, watches, rings, and black-and-white photographs

Overall dimensions variable

Acquired through the generosity of Heidi and Gregory Fulkerson, in memory of their parents Dr. Samuel and Katharine Fulkerson, and in honor of Warren James

216.2020

Fifth Floor, 1880s-1940s

5th Fl: 519, Bauhaus and Beyond



Anni Albers

Free-Hanging Room Divider

c.1949

Handwoven jute and lurex

53 x 34" (134.6 x 86.3 cm)

Gift of the designer

410.1960



Max Bill

Sun Lamp

1951

Enameled metal

22 1/2 x 5 3/4" (57.2 x 14.6 cm)

Gift of the manufacturer

455.1956



Marianne Brandt

Ashtray

1924

Brass and nickel-plated brass

2 5/8 x 3 1/8" (6.7 x 7.9 cm)

Gift of John McAndrew

422.1938.2



Marianne Brandt

Ashtray

1924

Brass and nickel-plated metal

2 3/4 x 3 1/8" (7 x 7.9 cm) diam. 3 1/8"

Gift of John McAndrew

424.1938



Marianne Brandt

Teapot

1924

Nickel silver and ebony

.a: 7 x 9" (17.8 x 22.8 cm)

.b: 3 1/4" (8.3 cm)

.c: 2 1/8 x 3 1/8" (5.4 x 8 cm)

Phyllis B. Lambert Fund

186.1958.1a-c

Fifth Floor, 1880s-1940s

5th Fl: 519, Bauhaus and Beyond



Marianne Brandt

Hot-Water Jug

1924

Nickel silver, ebony, and raffia

6 7/8 x 3" (17.5 x 7.6 cm)

Phyllis B. Lambert Fund

186.1958.2a-b



Marianne Brandt

Ceiling Lamp

1925

Spun aluminum and milk glass shade

41 1/2 x 15" (105.4 x 38.1 cm)

Phyllis B. Lambert Fund

188.1958.a-b



Marcel Breuer

Club chair (model B3)

1927-1928

Chrome-plated tubular steel and canvas

28 1/4 x 30 3/4 x 28" (71.8 x 78.1 x 71.1 cm)

Gift of Herbert Bayer

229.1934



Marcel Breuer

Chaise Longue

1935-1936

Laminated birch and upholstered cushion

32 x 24 x 58" (81.3 x 61 x 147.3 cm)

Purchase Fund

836.1942



Marcel Breuer

Armchair

1922

Stained oak and hand-woven wool

37 1/4 x 22 x 22 1/2" (94.6 x 55.9 x 57.2 cm), seat h. 17 1/4" (43.8 cm)

Phyllis B. Lambert Fund

160.1958

Fifth Floor, 1880s-1940s

5th Fl: 519, Bauhaus and Beyond



Marcel Breuer

Tea Cart (model B54)

1928

Nickel-plated tubular steel, rubber and painted wood

30 1/2 x 34 5/8 x 21 1/2" (77.5 x 88 x 54.6 cm)

Estée and Joseph Lauder Design Fund

225.1981.a-b



Florence Henri

Still Life Composition

1932

Gelatin silver print

9 1/4 x 10 13/16" (23.5 x 27.4 cm)

Thomas Walther Collection. Gift of Thomas Walther

1699.2001



Vasily Kandinsky

Soft Pressure

1931

Oil on plywood

39 1/4 x 39" (99.5 x 99 cm)

The Riklis Collection of McCrory Corporation

1032.1983



Paul Klee

Around the Fish

1926

Oil and tempera on canvas mounted on cardboard

18 3/8 x 25 1/8" (46.7 x 63.8 cm)

Abby Aldrich Rockefeller Fund

271.1939



Paul Klee

Twittering Machine (Die Zwitscher-Maschine)

1922

Oil transfer drawing, watercolor, and ink on paper with gouache and ink borders on board

25 1/4 x 19" (64.1 x 48.3 cm)

Purchase

564.1939

Fifth Floor, 1880s-1940s

5th Fl: 519, Bauhaus and Beyond



Paul Klee

Fire in the Evening

1929

Oil on cardboard

13 3/8 x 13 1/4" (33.8 x 33.3 cm)

Mr. and Mrs. Joachim Jean Aberbach Fund

153.1970



Paul Klee

Cat and Bird

1928

Oil and ink on gessoed canvas, mounted on wood

15 x 21" (38.1 x 53.2 cm)

Sidney and Harriet Janis Collection Fund and gift of Suzy Prudden and Joan H. Meijer in memory of F. H. Hirschland

300.1975



Paul Klee

Mask of Fear

1932

Oil on burlap

39 5/8 x 22 1/2" (100.4 x 57.1 cm)

Nelson A. Rockefeller Fund

854.1978



Margarete (Grete) Heymann Loebenstein Marks

Scheibenhenkel (Disk handle) teapot

1929-1930

Glazed stoneware

5 1/4 x 10 x 6 3/4" (13.3 x 25.4 x 17.1 cm)

Gift of Constance Caplan, Jo Carole and Ronald Lauder, and Lisa Tananbaum

204.2019.1a-b



Margarete (Grete) Heymann Loebenstein Marks

Scheibenhenkel (Disk handle) tea cup and saucer

1930

Glazed stoneware

2 1/2 x 5 1/4 x 4 1/4" (6.4 x 13.3 x 10.8 cm)

Gift of Constance Caplan, Jo Carole and Ronald Lauder, and Lisa Tananbaum

204.2019.2a-b

Fifth Floor, 1880s-1940s

5th Fl: 519, Bauhaus and Beyond



Margarete (Grete) Heymann Loebenstein Marks

Scheibenhenkel (Disk handle) tea cup and saucer

1930

Glazed stoneware

2 1/2 × 5 1/4 × 4 1/4" (6.4 × 13.3 × 10.8 cm)

Gift of Constance Caplan, Jo Carole and Ronald Lauder, and Lisa Tananbaum

204.2019.3a-b



Ludwig Mies van der Rohe

Resor House project, Jackson Hole, Wyoming

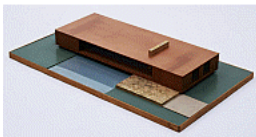
1939

Graphite, wood veneer, cut-and-pasted gelatin silver photographs, and cut-and-pasted photoreproduction (of Paul Klee's *Colorful Meal*, 1939) on illustration board

30 x 40" (76.1 x 101.5 cm)

Mies van der Rohe Archive, gift of the architect

716.1963



Ludwig Mies van der Rohe

Resor House Project, Jackson Hole, Wyoming

1937-38

Wood, plastic, paper, glass, copper, synthetic polymer paint

5 3/4 x 48 3/8 x 28 1/8" (14.6 x 122.9 x 71.4 cm)

Gift of Mrs. Stanley Resor

MC 21



László Moholy-Nagy

Head

c. 1926

Gelatin silver print

14 9/16 × 10 5/8" (37 × 27 cm)

Anonymous gift

505.1939



László Moholy-Nagy

Space Modulator L3

1936

Oil on perforated zinc and board, with glass-headed pins

17 1/4 × 19 1/8" (43.8 × 48.6 cm)

Purchase

223.1947

Fifth Floor, 1880s-1940s

5th Fl: 519, Bauhaus and Beyond



László Moholy-Nagy

Slide

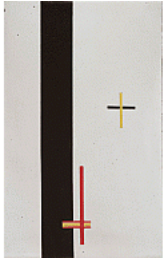
1923

Cut and pasted printed papers, airbrushed gouache, ink, and pencil on board

25 1/2 × 19 1/2" (64.7 × 49.5 cm)

Gift of Mrs. Sibyl Moholy-Nagy

19.1965



László Moholy-Nagy

EM 2 (Telephone Picture)

1923

Porcelain enamel on steel

18 3/4 × 11 7/8" (47.5 × 30.1 cm)

Gift of Philip Johnson in memory of Sibyl Moholy-Nagy

91.1971



László Moholy-Nagy

EM 3 (Telephone Picture)

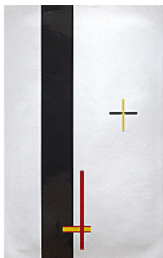
1923

Porcelain enamel on steel

9 1/2 × 6" (24 × 15 cm)

Gift of Philip Johnson in memory of Sibyl Moholy-Nagy

92.1971



László Moholy-Nagy

EM 1 (Telephone Picture)

1923

Porcelain enamel on steel

37 1/2 × 23 3/4" (95.2 × 60.3 cm)

Enid A. Haupt Fund, and acquired through the generosity of Debra and Leon Black, Ronnie Heyman, Daniel and Jane Och, Kenneth C. Griffin, Marlene Hess and James D. Zirin, Michael S. Ovitz, Ronald O. Perelman, Jerry Speyer and Katherine Farley, Alice and Tom Tisch, Gary and Karen Winnick, and Anne Dias Griffin

1342.2016

Fifth Floor, 1880s-1940s

5th Fl: 519, Bauhaus and Beyond



Irene Rice Pereira

White Lines

1942

Oil on vellum with marble dust, sand and other materials

25 7/8 x 21 7/8" (65.7 x 55.6 cm)

Gift of Edgar Kaufmann, Jr.

341.1942



Clara Porset

Butaque

c. 1957

Laminated wood and woven wicker

28 3/4 x 25 13/16 x 33 7/16" (73 x 65.6 x 84.9 cm)

Gift of The Modern Women's Fund

178.2021



Egon Riss

Penguin Donkey bookcase

c. 1939

Plywood

17 x 23 1/2 x 16 3/8" (43.2 x 59.7 x 41.6 cm)

Committee on Architecture and Design Funds

179.2021



Oskar Schlemmer

Bauhaus Stairway

1932

Oil on canvas

63 7/8 x 45" (162.3 x 114.3 cm)

Gift of Philip Johnson

597.1942



Wilhelm Wagenfeld

Carl Jakob Jucker

Table lamp

1923-1924

Chromed metal and glass

18 x 8" (45.7 x 20.3 cm) diam.; 5 1/2" (14 cm) diam. at base

Gift of Philip Johnson

490.1953

Fifth Floor, 1880s-1940s

5th Fl: 519, Bauhaus and Beyond

Wilhelm Wagenfeld

Table Lamp

1924

Frosted glass with chrome-plated base and stem

h. 14 1/8" (35.9 cm), base diam. 6 3/8" (16.2 cm); globe diam. 6 7/8" (17.5 cm)

Gift of Donn Golden

SC32.1980



Marguerite Wildenhain

Bowl

c. 1945

Glazed pottery

3 5/8 x 8" (9.2 x 20.3 cm)

Gift of Gump's

182.1948



Marguerite Wildenhain

Bowl

Before 1946

Glazed pottery

2 1/16 x 4 3/4" (5.2 x 12.1 cm)

Gift of Gump's

183.1948