

Guillermo del Toro: Crafting Pinocchio



ShadowMachine, American

Mussolini paint test, 2021

resin, paint, wood

3.25"x3"x9.25" (includes wood / brass stand)

Courtesy Netflix Physical Assets & Archives

LN2022.357



ShadowMachine, American

Painting of Mussolini, 2021

paper, polystyrene, polyurethane resin

13.5" x 7" x 7.25"

Courtesy Netflix Physical Assets & Archives

LN2022.488



ShadowMachine, American

Painting of Mussolini, 2021

paper, polystyrene, polyurethane resin

13.5" x 7" x 7.25"

Courtesy Netflix Physical Assets & Archives

LN2022.489



ShadowMachine, American

Posters of Mussolini, 2021

fabric, aluminum, wood

17" x .5" x 15.5"

Courtesy Netflix Physical Assets & Archives

LN2022.345

Guillermo del Toro: Crafting Pinocchio



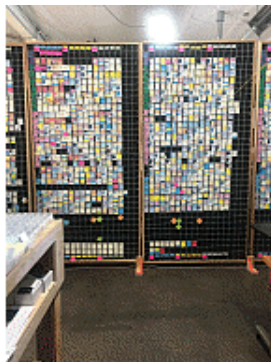
ShadowMachine, American

Mussolini poster without graffiti,
Courtesy Netflix Physical Assets & Archives
LN2022.1065



ShadowMachine, American

Pinocchio's emotional arc,
Courtesy Netflix Physical Assets & Archives
LN2022.342



ShadowMachine, American

Production scheduling board,
Courtesy Netflix Physical Assets & Archives
LN2022.572

ShadowMachine, American

Village corner set, 2020
Courtesy Netflix Physical Assets & Archives
LN2022.319.1

Guillermo del Toro: Crafting Pinocchio

ShadowMachine, American

Geppetto cart & dressing (1),
dressing: 1-crate 1- toolbox 1- folded rag 1- paint kit

LN2022.319.29

Mackinnon & Saunders

Pinocchio production puppet for Ext. Village Corner (bandaged legs),

LN2022.319.40

Mackinnon & Saunders

Spazzatura production puppet for Ext. Village Corner,

LN2022.319.41

Mackinnon & Saunders

Old Geppetto production puppet for Ext. Village Corner (with coat),

LN2022.319.42

Guillermo del Toro: Crafting Pinocchio

ShadowMachine, American

Background Woman #8 puppet for Ext. Village Corner,

LN2022.319.43

ShadowMachine, American

Background Girl #77 puppet for Ext. Village Corner,

LN2022.319.44

ShadowMachine, American

Fascist Guard #22 puppet for Ext. Village Corner,

LN2022.319.45

ShadowMachine, American

Sleeping Dog Production Puppet,

LN2022.319.46

Guillermo del Toro: Crafting Pinocchio

Cardboard Rigging box,

LN2022.319.47

ShadowMachine, American

Interior Geppetto's Workshop set - empty,
Courtesy Netflix Physical Assets & Archives
LN2022.322.1

Mackinnon & Saunders

Pinocchio production puppet for Geppetto's workshop (dead face),

LN2022.322.112

Mackinnon & Saunders

Old Geppetto production puppet for Geppetto's workshop (with stunt hairs),

LN2022.322.113

Guillermo del Toro: Crafting Pinocchio



Timelapse, Workshop dance,
Courtesy Netflix Physical Assets & Archives
LN2022.504.AV



Dragonframe: Geppetto's workshop,
Courtesy Netflix Physical Assets & Archives
LN2022.590.AV



Timelapse, church,
Courtesy Netflix Physical Assets & Archives
LN2022.583.AV

ShadowMachine, American
Church set,
Courtesy Netflix Physical Assets & Archives
LN2022.481.1

Guillermo del Toro: Crafting Pinocchio



Timelapse, Spazzatura runs through carnival grounds,
Courtesy Netflix Physical Assets & Archives
LN2022.508.AV

ShadowMachine, American

Ext. Ocean Cliff Ledge set - empty,
Courtesy Netflix Physical Assets & Archives
LN2022.479.1

Mackinnon & Saunders

Pinocchio production puppet for Ext. Ocean Cliff Ledge,

LN2022.479.7

Mackinnon & Saunders

Spazzatura production puppet for Ext. Ocean Cliff Ledge (holding torch),

LN2022.479.8

Guillermo del Toro: Crafting Pinocchio

ShadowMachine, American

Volpe production puppet for Ext. Ocean Cliff Ledge (with cane and sword),

LN2022.479.9

ShadowMachine, American

Interior, Doctor's House,

4 medical posters attached to the walls

Courtesy Netflix Physical Assets & Archives

LN2022.340.1

Mackinnon & Saunders

Spazzatura production puppet for Doctor's House,

LN2022.340.25

Mackinnon & Saunders

Old Geppetto production puppet for Doctor's House,

LN2022.340.26

Guillermo del Toro: Crafting Pinocchio

ShadowMachine, American

Volpe production puppet for Int. Doctor's House,

LN2022.340.27

ShadowMachine, American

Priest production puppet for Int. Doctor's House,

LN2022.340.28

ShadowMachine, American

Podesta production puppet for Int. Doctor's House,

LN2022.340.29

ShadowMachine, American

Podesta's Wife production puppet for Int. Doctor's House,

LN2022.340.30

Guillermo del Toro: Crafting Pinocchio

ShadowMachine, American

Doctor production puppet for Int. Doctor's House (with armband),

LN2022.340.31

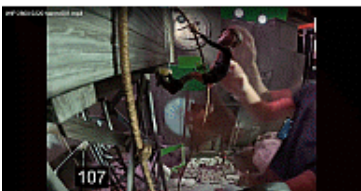
ShadowMachine, American

Doctor's Wife production puppet for Int. Doctor's House (with hat),

LN2022.340.32



Dragonframe: Dottore's office,
Courtesy Netflix Physical Assets & Archives
LN2022.588.AV



Timelapse, Fascist re-education camp,
Courtesy Netflix Physical Assets & Archives
LN2022.510.AV

Guillermo del Toro: Crafting Pinocchio

ShadowMachine, American

Re-education Camp set - empty,

LN2022.324.1

ShadowMachine, American

Fascist Kid #28 for Re-education camp,

LN2022.324.27

ShadowMachine, American

Fascist Kid #54 for Re-education camp,

LN2022.324.28

ShadowMachine, American

Fascist Kid #59 for Re-education camp,

LN2022.324.29

Guillermo del Toro: Crafting Pinocchio

ShadowMachine, American

Fascist Kid #61 for Re-education camp,

LN2022.324.30

ShadowMachine, American

Fascist Kid #64 for Re-education camp,

LN2022.324.31

ShadowMachine, American

Fascist Kid #65 for Re-education camp,

LN2022.324.32

ShadowMachine, American

Fascist Kid #33 for Re-education camp,

LN2022.324.33

Guillermo del Toro: Crafting Pinocchio

ShadowMachine, American

Fascist Kid #29 for Re-education camp,

LN2022.324.34

ShadowMachine, American

Fascist Kid #37 for Re-education camp,

LN2022.324.35

ShadowMachine, American

Podesta for Re-education camp,

LN2022.324.36

ShadowMachine, American

Pinocchio for Re-education camp,

LN2022.324.37

Guillermo del Toro: Crafting Pinocchio

ShadowMachine, American

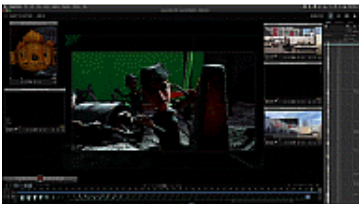
Candlewick for Re-education camp,

LN2022.324.38

ShadowMachine, American

Fascist Guard for Re-education camp,

LN2022.324.39



Dragonframe: Re-education camp,
Courtesy Netflix Physical Assets & Archives
LN2022.589.AV



Guy Davis, American, born 1966

Exterior Re-education camp,

Print of digital drawing

Courtesy Netflix Physical Assets & Archives

LN2022.580

Guillermo del Toro: Crafting Pinocchio

Motion Control Package,

CE2022.154.1

ShadowMachine, American

Carnival stage set,

Courtesy Netflix Physical Assets & Archives

LN2022.323.1

Mackinnon & Saunders

Pinocchio production puppet for Audience Tent (boot legs),

LN2022.323.23

ShadowMachine, American

Devil marionette for Interior Audience Tent,

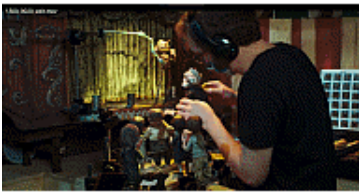
LN2022.323.24a-b

Guillermo del Toro: Crafting Pinocchio

ShadowMachine, American

Columbina marionette fot Int. Audience Tent,

LN2022.323.25



Timelapse, Pinocchio the carnival star,
Courtesy Netflix Physical Assets & Archives
LN2022.509.AV



Timelapse, Pinocchio's performance rehearsal,
Courtesy Netflix Physical Assets & Archives
LN2022.507.AV



ShadowMachine, American

Carnival entrance banner, 2020

brass, fabric, steel

34.5" x 48" x 8.5"

Courtesy Netflix Physical Assets & Archives

LN2022.487

Guillermo del Toro: Crafting Pinocchio



ShadowMachine, American

Giraffe head, 2020

polyurethane resin, fabric, foam, steel, brass, aluminum, acrylic

12.5" x 4.5" x 7"

Courtesy Netflix Physical Assets & Archives

LN2022.568



ShadowMachine, American

Carnival barrel, 2020

polyurethane resin, polyurethane foam

7.5" x 4.5" x 4.5"

Courtesy Netflix Physical Assets & Archives

LN2022.570



ShadowMachine, American

Balloon bunch, 2020

polyurethane resin, steel

14" x 3" x 4.5"

Courtesy Netflix Physical Assets & Archives

LN2022.579



ShadowMachine, American

Volpe's chest of coins, 2021

polyurethane resin, steel, brass

10.75" x 4.5" x 5"

Courtesy Netflix Physical Assets & Archives

LN2022.602

Guillermo del Toro: Crafting Pinocchio



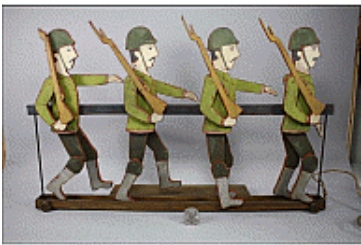
Jesse Gregg

Carnival tent, 2020

Print of digital drawing

Courtesy Netflix Physical Assets & Archives

LN2022.552



ShadowMachine, American

Soldier chorus line marionette, 2021

MDF, steel, brass

20"x 4.5" x12"

Courtesy Netflix Physical Assets & Archives

LN2022.346



ShadowMachine, American

BPHP baby soldier chorus line marionette, 2021

MDF, steel, brass, fabric

20"x4.5"x12"

Courtesy Netflix Physical Assets & Archives

LN2022.347



Fototeca Gilardi, Italian

Credero, Obbedire, Combattere (To Believe, To Obey, To Fight), 1924

Courtesy Fototeca Gilardi

LN2022.1413

Guillermo del Toro: Crafting Pinocchio

ShadowMachine, American

Int. Re-Education Camp Truck, empty,
Courtesy Netflix Physical Assets & Archives
LN2022.592.1

ShadowMachine, American

Fascist Soldier #75 for Re-education camp truck,

LN2022.592.2

ShadowMachine, American

Fascist Kid #30 for Re-education camp truck,

LN2022.592.3

ShadowMachine, American

Fascist Kid #63 for Re-education camp truck,

LN2022.592.4

Guillermo del Toro: Crafting Pinocchio



ShadowMachine, American

Carlo's hill and tree stump, 2020

cardboard tube, chip board, hot glue, elmers, acrylic paint, foam, steel wool, rafia, spray paint, vermiculits, moss mat, tissue paper

Courtesy Netflix Physical Assets & Archives

LN2022.476



ShadowMachine, American

Spazzatura's headstone, 2021

polyurethane resin

5.5"x1.5"x3"

Courtesy Netflix Physical Assets & Archives

LN2022.477



ShadowMachine, American

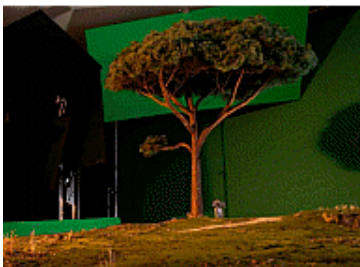
Carlo's headstone, 2020

Polyurethane resin

8"x2"x5.5"

Courtesy Netflix Physical Assets & Archives

LN2022.478



ShadowMachine, American

Carlo's tree, 2020

Courtesy Netflix Physical Assets & Archives

LN2022.600

Guillermo del Toro: Crafting Pinocchio



Timelapse, Pinocchio walking to graves,
Courtesy Netflix Physical Assets & Archives
LN2022.500.AV



ShadowMachine, American

Guillermo del Toro's Pinocchio crew members at ShadowMachine, Portland, Oregon and Taller del Chucho, Guadalajara, Mexico,
Courtesy Netflix Physical Assets & Archives
LN2022.493

ShadowMachine, American

Crewmembers from Guillermo del Toro's Pinocchio, Altrincham, England, 2022
facsimile

CH2022.2166



ShadowMachine, American

Puppets of Guillermo del Toro and Mark Gustafson at 30 percent scale, 2022
clay (base); silicone, paint, wire
(includes lump of clay used as base): 3 1/2 x 3/4 x 1 1/2" (8.9 x 1.9 x 3.8 cm)
Courtesy Netflix Physical Assets & Archives
LN2022.1055

Guillermo del Toro: Crafting Pinocchio



Larry Peace-Love Yes, American, born 1974

Collaboration, 2022

acrylic paint on cedar fence board

L 46" x H 5.5" x D 3/4"

The Museum of Modern Art, New York

F2022.84

ShadowMachine, American

Volpe's living wagon set,

Courtesy Netflix Physical Assets & Archives

LN2022.480.1



Guy Davis, American, born 1966

Mangiafoco's living wagon,

Digital print

Courtesy Netflix Physical Assets & Archives

LN2022.550



Jesse Gregg

Volpe's living wagon, 2019

Print of digital drawing

Courtesy Netflix Physical Assets & Archives

LN2022.551

Guillermo del Toro: Crafting Pinocchio



ShadowMachine, American

Scenic team paint process - Volpe's Wagon monkey heads,
Courtesy Netflix Physical Assets & Archives
LN2022.1362



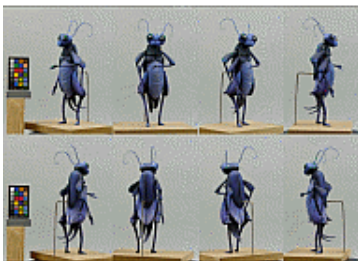
ShadowMachine, American

Scenic team paint process - Volpe's cane,
Courtesy Netflix Physical Assets & Archives
LN2022.1363



ShadowMachine, American

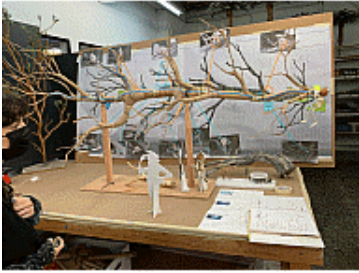
Oversized Pinocchio puppet, 2020
15# foam, acryl pro, acrylic paint, aluminum internal skeleton
68" (172.7 cm)
Courtesy Netflix Physical Assets & Archives
LN2022.321



Mackinnon & Saunders

Oversized Cricket puppet, 2020-2021
Resin, steel, silicone, paint, printed eyes
11" (27.9 cm)
Courtesy Netflix Physical Assets & Archives
LN2022.328

Guillermo del Toro: Crafting Pinocchio



ShadowMachine, American

Maquette of Pinocchio with tree nose, 2021

Nose: cardboard tube & chip board, hot glue, staples, aluminum wire, masking tape. Pinocchio: aluminum wire, masking tape, cardboard, foam 7'x3'x4'

Courtesy Netflix Physical Assets & Archives
LN2022.337



ShadowMachine, American

Pinocchio with tree nose, 2021

resin

Courtesy Netflix Physical Assets & Archives
LN2022.516



ShadowMachine, American

Twig, 2022

Wood and steel

Courtesy Netflix Physical Assets & Archives
LN2022.1425



Netflix

Recording the Score to Guillermo del Toro's Pinocchio, digital video file

Courtesy Netflix Physical Assets & Archives
LN2022.1426.AV

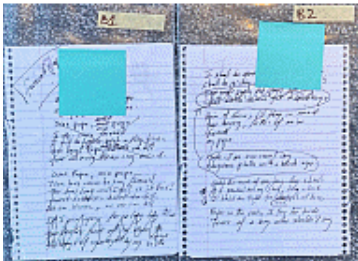
Guillermo del Toro: Crafting Pinocchio

Alexandre Desplat, French, founded 1961

Ciao Papa score booklet,

Courtesy Netflix Physical Assets & Archives

LN2022.1387

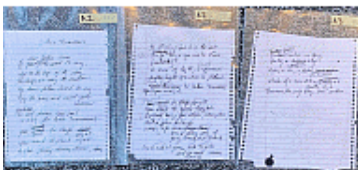


Alexandre Desplat, French, founded 1961

Ciao Papa handwritten lyrics sheets,

Courtesy Netflix Physical Assets & Archives

LN2022.1386.1-2



Alexandre Desplat, French, founded 1961

Better Tomorrows lyrics sheets,

Courtesy Netflix Physical Assets & Archives

LN2022.1385.1-3



Alexandre Desplat, French, founded 1961

Better Tomorrows score booklet,

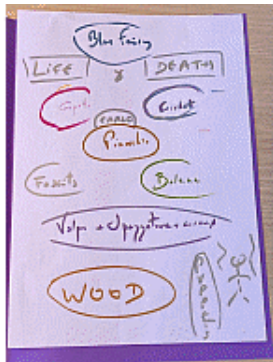
Courtesy Netflix Physical Assets & Archives

LN2022.1384

Guillermo del Toro: Crafting Pinocchio



Alexandre Desplat, French, founded 1961
Pinocchio opening score lyrics booklet,
Courtesy Netflix Physical Assets & Archives
LN2022.1383



Alexandre Desplat, French, founded 1961
Desplat thematic diagram,
Courtesy Netflix Physical Assets & Archives
LN2022.1382

ShadowMachine, American
Dialogue Stage Boxes: Scene 1600-0240 box A,
Courtesy Netflix Physical Assets & Archives
LN2022.1379

ShadowMachine, American
Dialogue Stage Boxes: Scene 1600-0240 box B,
Courtesy Netflix Physical Assets & Archives
LN2022.1380

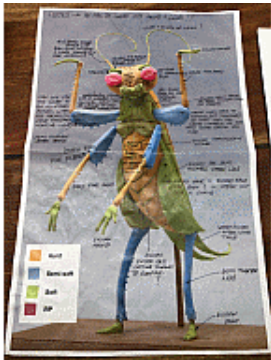
Guillermo del Toro: Crafting Pinocchio

Exposure sheet, scene 1600 0240, facsimile,
Courtesy Netflix Physical Assets & Archives
LN2022.1409.1-4



ShadowMachine, American

Cricket under oversized glass and hammer, 2020
Glass, polystyrene foam, fiberglass, epoxy resin, wood
hammer: 36"x8"x15"
oversized Glass: 14" x 14" x 14"
Courtesy Netflix Physical Assets & Archives
LN2022.472



ShadowMachine, American

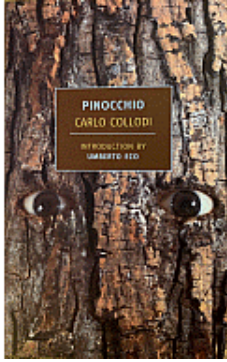
Cricket puppet materials, 2019
paper, pen
Courtesy Netflix Physical Assets & Archives
LN2022.396



Jesse Gregg

Cricket's nook, 2019
Print of digital drawing
Courtesy Netflix Physical Assets & Archives
LN2022.581

Guillermo del Toro: Crafting Pinocchio



Tim Rollins, American, 1955–2017

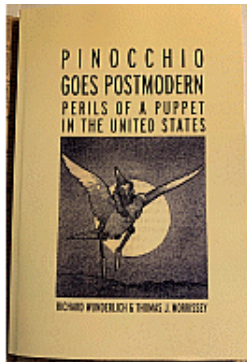
Pinocchio, 2009

book

8 × 5 × 1/2" (20.3 × 12.7 × 1.3 cm)

The Museum of Modern Art, New York

F2022.60



Charles Copeland

Pinocchio Goes Postmodern: Perils of a Puppet in the United States, 2008

book

9 1/8 × 6" (23.2 × 15.2 cm)

The Museum of Modern Art, New York

F2022.1



Sara Fanelli

Pinocchio, 2003

hardcover book and slipcase

book: 9 1/2 × 8 × 3/4" (24.1 × 20.3 × 1.9 cm)

slipcase: 9 5/8 × 8 1/8 × 1" (24.4 × 20.6 × 2.5 cm)

The Museum of Modern Art, New York

F2022.68



Jarõna Ilo, Estonian, born Ukraine 1955

Pinocchio, 1985

book

spread: 10 1/4 × 16 1/4 × 1/2" (26 × 41.3 × 1.3 cm)

closed: 10 1/4 × 8 × 7/8" (26 × 20.3 × 2.2 cm)

The Museum of Modern Art, New York

F2022.77

Guillermo del Toro: Crafting Pinocchio



Liam Anne Garner

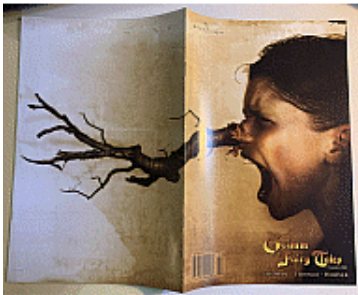
Politically Correct Pinocchio, 2018

book

8 × 5 × 1/16" (20.3 × 12.7 × 0.2 cm)

The Museum of Modern Art, New York

F2022.70



Grimm Fairy Tales presents Pinocchio, Grimm Fairy Tales Issue #31, 2008

graphic comic book

10 1/8 × 6 5/8" (25.7 × 16.8 cm)

The Museum of Modern Art, New York

F2022.5



Dusty Higgins

Pinocchio Vampire Slayer of Wood and Blood, Part 1, 2012

graphic novel

8 1/2 × 5 1/2" (21.6 × 14 cm)

The Museum of Modern Art, New York

F2021.3



Dusty Higgins

Pinocchio Vampire Slayer of Wood and Blood, Part 2, 2012

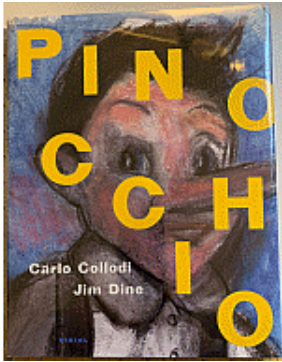
graphic novel

8 1/2 × 5 1/2" (21.6 × 14 cm)

The Museum of Modern Art, New York

F2021.4

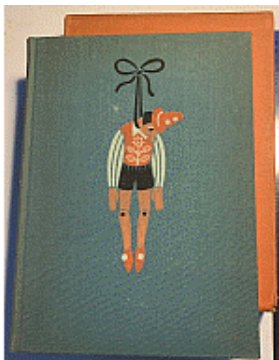
Guillermo del Toro: Crafting Pinocchio



Jim Dine, American, born 1935
Pinocchio, 2006
hardcover book
12 1/4 × 9 1/2" (31.1 × 24.1 cm)
The Museum of Modern Art, New York
F2022.4



Winshluss, French, born 1970
Pinocchio, 2020
graphic novel
10 1/2 × 7 3/4 × 1" (26.7 × 19.7 × 2.5 cm)
The Museum of Modern Art, New York
F2022.12



Richard Floethe, American, born Germany, 1901–1988
Pinocchio: Adventures of a Marionette, 1937
hardcover book in slipcase
10 3/4 × 7 7/8" (27.3 × 20 cm)
The Museum of Modern Art, New York
F2022.2

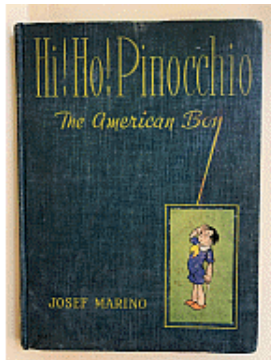


Pinocho blues, 2010
hardcover book
8 1/4 × 6 15/16" (21 × 17.6 cm)
The Museum of Modern Art, New York
F2022.11

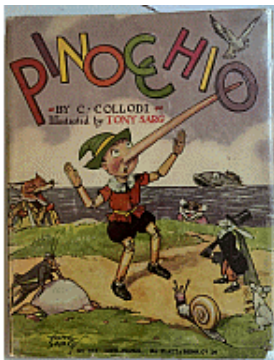
Guillermo del Toro: Crafting Pinocchio



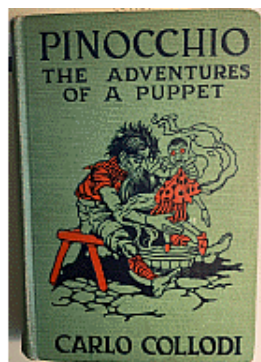
Pinocchio, 1971
hardcover book
11 1/8 × 8 1/2" (28.3 × 21.6 cm)
The Museum of Modern Art, New York
F2022.7



William Donahey, American, 1883 – 1970
Hi! Ho! Pinocchio! The American Boy, 1940
book
11 3/8 × 8 3/8 × 1 5/8" (28.9 × 21.3 × 4.1 cm)
The Museum of Modern Art, New York
F2022.74



Tony Sarg, American, born Guatemala, 1882 – 1942
Pinocchio, 1940
book
11 × 8 1/2 × 3/4" (27.9 × 21.6 × 1.9 cm)
The Museum of Modern Art, New York
F2022.69

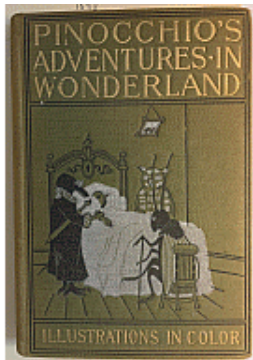


Pinocchio the Adventures of a Puppet, c. 1927
book
7 1/2 × 5 1/4 × 1 1/4" (19.1 × 13.3 × 3.2 cm)
The Museum of Modern Art, New York
F2022.71

Guillermo del Toro: Crafting Pinocchio



Pinocchio, 1950
hardcover book
7 × 5" (17.8 × 12.7 cm)
The Museum of Modern Art, New York
F2022.3



Pinocchio's Adventures in Wonderland, 1898
book
7 1/2 × 5 1/4 × 3/4" (19.1 × 13.3 × 1.9 cm)
The Museum of Modern Art, New York
F2022.72



Richard Kivit, Estonian, 1888 – 1981
Pinokkio, 1933
book
8 1/8 × 5 1/2 × 3/8" (20.6 × 14 × 1 cm)
The Museum of Modern Art, New York
F2022.73



Pinocchio, 1965
hardcover book
7 1/4 × 5 7/16" (18.4 × 13.8 cm)
The Museum of Modern Art, New York
F2022.10

Guillermo del Toro: Crafting Pinocchio



Louise Beujon

Pinocchio, 1939

book

8 1/2 × 5 3/4 × 1 1/8" (21.6 × 14.6 × 2.9 cm)

The Museum of Modern Art, New York

F2022.63



Gretta, American, 1904–1988

Pinocchio, c. 1930–1935

hardcover book

8 1/8 × 5 1/2 × 3/4" (20.6 × 14 × 1.9 cm)

The Museum of Modern Art, New York

F2022.8



Herman Bacharach, American, 1899–1976

Pinocchio, 1927

book

8 1/2 × 6 × 1 1/4" (21.6 × 15.2 × 3.2 cm)

The Museum of Modern Art, New York

F2022.76



Maud Petersham, American, 1890 – 1970

Miska Petersham, American, born Hungary. 1888–1960

Pinocchio, 1932

book

8 7/8 × 6 1/2 × 1 1/2" (22.5 × 16.5 × 3.8 cm)

The Museum of Modern Art, New York

F2022.75

Guillermo del Toro: Crafting Pinocchio



Paul Buckley

Frankenstein x Mary Shelley, 2013

hardcover book

8 × 5 3/4 × 1 3/8" (20.3 × 14.6 × 3.5 cm)

The Museum of Modern Art, New York

F2022.14



Paul Buckley

The Thing on the Doorstep x H.P. Lovecraft, 2013

hardcover book

8 × 5 3/4 × 1 3/8" (20.3 × 14.6 × 3.5 cm)

The Museum of Modern Art, New York

F2022.15



Paul Buckley

The Haunting of Hill House x Shirley Jackson, 2013

hardcover book

8 × 5 3/4 × 1 3/8" (20.3 × 14.6 × 3.5 cm)

The Museum of Modern Art, New York

F2022.16



Paul Buckley

The Raven x Edgar Allan Poe, 2013

hardcover book

8 × 5 3/4 × 1 3/8" (20.3 × 14.6 × 3.5 cm)

The Museum of Modern Art, New York

F2022.17

Guillermo del Toro: Crafting Pinocchio



Paul Buckley

American Supernatural Tales, 2013

hardcover book

8 × 5 3/4 × 1 3/8" (20.3 × 14.6 × 3.5 cm)

The Museum of Modern Art, New York

F2022.18



Paul Buckley

Haunted Castles x Ray Russell, 2013

hardcover book

8 × 5 3/4 × 1 3/8" (20.3 × 14.6 × 3.5 cm)

The Museum of Modern Art, New York

F2022.19



Scott Cooper, American, born 1970

Antlers, 2021

one-sheet poster

40 × 27" (101.6 × 68.6 cm)

The Museum of Modern Art, New York

F2022.21



Andy Muschietti, Argentine, born 1973

Mama, 2013

one-sheet poster

40 × 27" (101.6 × 68.6 cm)

The Museum of Modern Art, New York

F2022.41

Guillermo del Toro: Crafting Pinocchio



J. A. Bayona, Spanish, born 1975

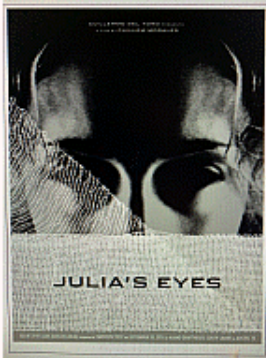
El orfanato (The Orphanage), 2007

one-sheet poster

40 × 27" (101.6 × 68.6 cm)

Film Study Center Special Collections

F2022.46



Rob Jones, American, born 1973

Guillem Morales, Spanish, born 1973

Los Ojos de Julia (Julia's Eyes), 2010

poster

25 1/2 × 19" (64.8 × 48.3 cm)

The Museum of Modern Art, New York

F2022.25



André Øvredal, Norwegian, born 1973

Scary Stories to Tell in the Dark, 2019

one-sheet poster

40 × 27" (101.6 × 68.6 cm)

The Museum of Modern Art, New York

F2022.47

Javier Soto

Worlds Within: Death & Resurrection, 2022

video (color, silent)

Courtesy Lionsgate, Netflix, Picturehouse, Searchlight, Sony Pictures, Sony Pictures Classic, Universal Pictures, Warner Bros.

LN2022.1415

Guillermo del Toro: Crafting Pinocchio

Javier Soto

Worlds Within: An Exploration of Monsters, 2022

video (color, silent)

Courtesy Lionsgate, Netflix, Picturehouse, Searchlight, Sony Pictures, Sony Pictures Classic, Universal Pictures, Warner Bros.

LN2022.1416

Javier Soto

Worlds Within: The Worlds of Guillermo del Toro, 2022

video (color, silent)

Courtesy Lionsgate, Miramax, Netflix, New Line Cinema, Picturehouse, Searchlight, Sony Pictures, Sony Pictures Classic, Universal Pictures, Warner Bros.

LN2022.1417

Nathan Robitaille, Canadian, founded 1978

Stefana Fratila, Romanian, born 1991

Passing Through The Worlds of Guillermo del Toro, 2022

audio

The Museum of Modern Art, New York

F2022.87



Mackinnon & Saunders

Older Geppetto puppet, 2019-2020

steel, foam latex, silicone, resin, fabric, fiber, plastic

4"x4 3/4"x 14"

Courtesy Netflix Physical Assets & Archives

LN2022.326

Guillermo del Toro: Crafting Pinocchio



Mackinnon & Saunders

Younger Gepetto puppet, 2019-2020

steel, foam latex, silicone, resin, fabric, fiber, plastic

4"x4 3/4 x 14

Courtesy Netflix Physical Assets & Archives

LN2022.526



ShadowMachine, American

Crucifix, 2019-2022

Polyurethane resin, paint

1/2 x 1 x 1 1/2" (1.3 x 2.5 x 3.8 cm)

Courtesy Netflix Physical Assets & Archives

LN2022.1051



ShadowMachine, American

Carving knife, 2019

Brass, epoxy, paint

1" x 1/3" x 3 mm

Courtesy Netflix Physical Assets & Archives

LN2022.1050



ShadowMachine, American

Carlo puppet, 2019-2020

steel, foam latex, silicone, resin, fabric, fiber, plastic

2.5" x 3.5" x 9.5"

Courtesy Netflix Physical Assets & Archives

LN2022.399

Guillermo del Toro: Crafting Pinocchio



Mackinnon & Saunders

Spazzatura puppet, 2020-2021

steel, silicone, fabric, bristle fur, paint

3.5"x4"x7"

Courtesy Netflix Physical Assets & Archives

LN2022.329



Mackinnon & Saunders

Volpe puppet, 2019-2020

steel, foam latex, silicone, resin, fabric, fiber, plastic

5.5" x 5.5" x 17.5"

Courtesy Netflix Physical Assets & Archives

LN2022.330



ShadowMachine, American

Bisected Volpe puppet, 2022

steel wire, resin, paint, fabric, polyfoam, silicone

5.5" x 5.5" x 17.5"

Courtesy Netflix Physical Assets & Archives

LN2022.528



ShadowMachine, American

Spazzatura mouth 1, 2020

resin, paint

Courtesy Netflix Physical Assets & Archives

LN2022.574

Guillermo del Toro: Crafting Pinocchio



ShadowMachine, American

Volpe's wagon hood ornament, 2020

polyurethane resin, steel

1.25" x 1" x 1.25"

Courtesy Netflix Physical Assets & Archives

LN2022.553



Guillermo del Toro, Mexican, born 1964

Cronos, 1993

one-sheet poster

41 x 27" (104.1 x 68.6 cm)

The Museum of Modern Art, New York

F2021.6



Martin Ansín, Uruguayan

Guillermo del Toro, Mexican, born 1964

Cronos, 2011

poster

34 x 24" (86.4 x 61 cm)

The Museum of Modern Art, New York

F2022.36



Guillermo del Toro, Mexican, born 1964

Nightmare Alley, 2021

one-sheet poster

40 x 27" (101.6 x 68.6 cm)

The Museum of Modern Art, New York

F2021.16

Guillermo del Toro: Crafting Pinocchio



Guillermo del Toro, Mexican, born 1964
Nightmare Alley, 2021
lithograph
20 × 13 1/2" (50.8 × 34.3 cm)
The Museum of Modern Art, New York
F2022.26



Guillermo del Toro, Mexican, born 1964
Nightmare Alley, 2021
vinyl subway poster
46 × 60" (116.8 × 152.4 cm)
The Museum of Modern Art, New York
F2022.43



Guillermo del Toro, Mexican, born 1964
Nightmare Alley, 2021
vinyl subway poster
46 × 60" (116.8 × 152.4 cm)
The Museum of Modern Art, New York
F2022.44



Guillermo del Toro, Mexican, born 1964
Nightmare Alley, 2021
silk poster
36 × 24" (91.4 × 61 cm)
The Museum of Modern Art, New York
F2022.58

Guillermo del Toro: Crafting Pinocchio



Guillermo del Toro, Mexican, born 1964
Hellboy, 2004
one-sheet poster
40 × 27" (101.6 × 68.6 cm)
The Museum of Modern Art, New York
F2021.11



Guillermo del Toro, Mexican, born 1964
Hellboy, 2004
one-sheet poster
40 × 27" (101.6 × 68.6 cm)
The Museum of Modern Art, New York
F2021.12



Guillermo del Toro, Mexican, born 1964
Hellboy 2: The Golden Army, 2008
one-sheet poster
40 × 27" (101.6 × 68.6 cm)
The Museum of Modern Art, New York
F2021.13



Guillermo del Toro, Mexican, born 1964
Blade II, 2002
one-sheet poster
40 × 27" (101.6 × 68.6 cm)
The Museum of Modern Art, New York
F2021.8

Guillermo del Toro: Crafting Pinocchio



Guillermo del Toro, Mexican, born 1964

Blade II, 2002

one-sheet poster

40 × 27" (101.6 × 68.6 cm)

The Museum of Modern Art, New York

F2021.9



Guillermo del Toro, Mexican, born 1964

El laberinto del fauno (Pan's Labyrinth), 2006

one-sheet poster

40 × 27" (101.6 × 68.6 cm)

The Museum of Modern Art, New York

F2021.14



Guy Davis, American, born 1966

Guillermo del Toro, Mexican, born 1964

El espinazo del diablo (The Devil's Backbone), 2013

screen printed poster

24 × 18" (61 × 45.7 cm)

Film Study Center Special Collections

F2022.35



Guillermo del Toro, Mexican, born 1964

Pacific Rim, 2013

one-sheet poster

40 × 27" (101.6 × 68.6 cm)

The Museum of Modern Art, New York

F2021.18

Guillermo del Toro: Crafting Pinocchio



Guillermo del Toro, Mexican, born 1964
Pacific Rim, 2013
one-sheet poster
40 × 27" (101.6 × 68.6 cm)
The Museum of Modern Art, New York
F2021.19



Guillermo del Toro, Mexican, born 1964
Mimic, 1997
poster
28 1/2 × 20" (72.4 × 50.8 cm)
The Museum of Modern Art, New York
F2022.40



Guillermo del Toro, Mexican, born 1964
Mimic, 1997
one-sheet poster
40 × 27" (101.6 × 68.6 cm)
The Museum of Modern Art, New York
F2021.15



Troy Nixey, Canadian, born 1973
Don't Be Afraid of the Dark, 2010
one-sheet poster
40 × 27" (101.6 × 68.6 cm)
The Museum of Modern Art, New York
F2022.33

Guillermo del Toro: Crafting Pinocchio



Fernando Reza
Fro Design Company
Troy Nixey, Canadian, born 1973
Don't Be Afraid of the Dark, 2011
one-sheet poster
24 × 18" (61 × 45.7 cm)
The Museum of Modern Art, New York
F2022.24



Daniel Danger, American, born 1982
Guillermo del Toro, Mexican, born 1964
Nightmare Alley, 2022
poster
18 × 36" (45.7 × 91.4 cm)
The Museum of Modern Art, New York
F2022.45



Daniel Danger, American, born 1982
Nightmare Alley, 2021
silkscreen poster
The Museum of Modern Art, New York
F2022.83



Daniel Danger, American, born 1982
Guillermo del Toro, Mexican, born 1964
Crimson Peak, 2015
poster
36 × 18" (91.4 × 45.7 cm)
The Museum of Modern Art, New York
F2022.22

Guillermo del Toro: Crafting Pinocchio



Guillermo del Toro, Mexican, born 1964
Crimson Peak, 2015
one-sheet poster
40 × 27" (101.6 × 68.6 cm)
The Museum of Modern Art, New York
F2021.10



Sara Deck, Canadian, born 1977
Guillermo del Toro, Mexican, born 1964
Crimson Peak, 2015
screen printed poster
36 × 24" (91.4 × 61 cm)
The Museum of Modern Art, New York
F2022.23



Doug LaRocca
Guillermo del Toro, Mexican, born 1964
Sword Deployed, 2013
poster
16 × 12" (40.6 × 30.5 cm)
The Museum of Modern Art, New York
F2022.27



Daniel Danger, American, born 1982
Guillermo del Toro, Mexican, born 1964
The Shape of Water, 2018
poster
36 × 18" (91.4 × 45.7 cm)
The Museum of Modern Art, New York
F2022.29

Guillermo del Toro: Crafting Pinocchio



Guillermo del Toro, Mexican, born 1964

The Shape of Water, 2017

one-sheet poster

40 × 27" (101.6 × 68.6 cm)

The Museum of Modern Art, New York

F2021.20



Guillermo del Toro, Mexican, born 1964

El espinazo del diablo (The Devil's Backbone), 2001

poster

28 1/2 × 20 1/4" (72.4 × 51.4 cm)

The Museum of Modern Art, New York

F2022.34



Jock, British, born 1972

Guillermo del Toro, Mexican, born 1964

El laberinto del fauno (Pan's Labyrinth), 2014

poster

36 × 20" (91.4 × 50.8 cm)

The Museum of Modern Art, New York

F2022.28



Guillermo del Toro, Mexican, born 1964

El laberinto del fauno (Pan's Labyrinth), 2006

poster insert

20 × 14" (50.8 × 35.6 cm)

The Museum of Modern Art, New York

F2022.37

Guillermo del Toro: Crafting Pinocchio



Guillermo del Toro, Mexican, born 1964

El laberinto del fauno (Pan's Labyrinth), 2006

poster insert

20 × 14" (50.8 × 35.6 cm)

The Museum of Modern Art, New York

F2022.39



James Jean, American, born Taiwan 1979

Guillermo del Toro's Pinocchio, 2022

UV inks on Hahnemühle fine art printing paper

60 × 36" (152.4 × 91.4 cm)

The Museum of Modern Art, New York

F2022.82



The Strain, 2015

poster

17 × 11" (43.2 × 27.9 cm)

The Museum of Modern Art, New York

F2022.50



The Strain, 2016

poster

17 × 11" (43.2 × 27.9 cm)

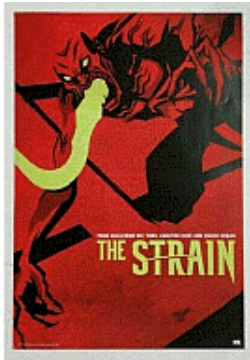
The Museum of Modern Art, New York

F2022.51

Guillermo del Toro: Crafting Pinocchio



Guillermo del Toro, Mexican, born 1964
The Strain, 2017
poster
17 × 11" (43.2 × 27.9 cm)
The Museum of Modern Art, New York
F2022.52



Guillermo del Toro, Mexican, born 1964
The Strain, 2017
poster
19 × 13" (48.3 × 33 cm)
Film Study Center Special Collections
F2022.53



Guillermo del Toro, Mexican, born 1964
The Strain, 2017
poster
19 × 13" (48.3 × 33 cm)
The Museum of Modern Art, New York
F2022.54



Guillermo del Toro, Mexican, born 1964
Troll Hunters, December 15, 2017
poster
24 × 18" (61 × 45.7 cm)
The Museum of Modern Art, New York
F2022.55

Guillermo del Toro: Crafting Pinocchio



Guillermo del Toro, Mexican, born 1964

Troll Hunters, December 23, 2016

poster

17 × 11" (43.2 × 27.9 cm)

The Museum of Modern Art, New York

F2022.56



Chris Miller, American, born 1968

Puss in Boots, 2011

poster

40 × 27" (101.6 × 68.6 cm)

The Museum of Modern Art, New York

F2022.64