

Thomas Schütte

The Museum of Modern Art, New York, September 29, 2024 - 1/18/2025

### Entry Plaza



THOMAS SCHÜTTE (German, born 1954)

*Lager (Storage)*

1978

Paint and varnish on wood, 144 parts

Various dimensions from 11 13/16 × 6 7/8" (30 × 17.5 cm) to 53 15/16 × 26 5/8" (137 × 67.7 cm)

Installation dimensions variable

Collection the artist, Düsseldorf



THOMAS SCHÜTTE (German, born 1954)

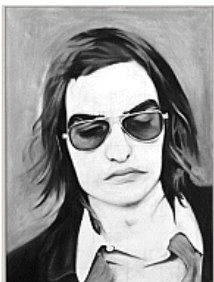
*Alles in Ordnung (All in Order)*

1981

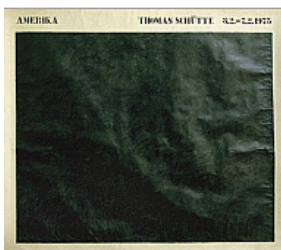
Paint on wall

Installation dimensions variable

Collection the artist, Düsseldorf



THOMAS SCHÜTTE (German, born 1954)  
*Selbstportrait. 30/31.5.75 (Self-portrait: 5/30-31/75)*  
1975  
Oil on nettle cloth  
23 5/8 × 17 11/16" (60 × 45 cm)  
Collection the artist, Düsseldorf



THOMAS SCHÜTTE (German, born 1954)  
*Amerika (America)*  
1975  
Pencil on paper  
Sheet: 82 11/16 × 94 1/2" (210 × 240 cm)  
Collection the artist, Düsseldorf



THOMAS SCHÜTTE (German, born 1954)  
*Valium*  
1975  
Watercolor and pencil on paper  
22 13/16 × 15 3/4" (58 × 40 cm)  
Collection the artist, Düsseldorf



THOMAS SCHÜTTE (German, born 1954)  
*Valium*  
1975  
Crayon on paper  
11 13/16 × 23 5/8" (30 × 60 cm)  
Collection the artist, Düsseldorf



THOMAS SCHÜTTE (German, born 1954)  
*Selbstportrait. 29.5.75 (Self-portrait: 5/29/75)*  
1975  
Oil on nettle cloth  
23 5/8 × 17 11/16" (60 × 45 cm)  
Private collection, Germany



THOMAS SCHÜTTE (German, born 1954)  
*Große Mauer (Large Wall)*

1977  
Oil on hardboard, 1,200 parts  
Each:  $3 \frac{15}{16} \times 7 \frac{7}{8}$ " (10 × 20 cm)  
Installation dimensions variable  
Collection the artist, Düsseldorf



THOMAS SCHÜTTE (German, born 1954)  
*Postkarten, München (Postcards, Munich)*

1980  
Postcards mounted on paper, four sheets  
Each: 22 × 32" (55.9 × 81.3 cm)  
Collection the artist, Düsseldorf



THOMAS SCHÜTTE (German, born 1954)  
*In Arbeit seit Juli 74 (In Progress since July '74)*

1980  
Pencil and primer on nettle cloth  
23  $\frac{5}{8}$  × 23  $\frac{5}{8}$ " (60 × 60 cm)  
Collection the artist, Düsseldorf



THOMAS SCHÜTTE (German, born 1954)  
*Mann im Matsch (I. Version) (Man in Mud [1st Version])*

1982/2014  
Aluminum and steel on wood pedestal  
Aluminum and steel:  $9 \frac{5}{8} \times 52 \frac{3}{4} \times 50$ " (24.4 × 134 × 127 cm)  
Pedestal: 23 × 61 × 61" (58.4 × 154.9 × 154.9 cm)  
Courtesy the artist and Peter Freeman, Inc., New York/Paris



THOMAS SCHÜTTE (German, born 1954)  
*Vater Staat (Father State)*

2010  
Patinated bronze  
149  $\frac{5}{8}$  × 61 × 55" (380 × 155 × 139.7 cm)  
Collection Anne Dias Griffin



THOMAS SCHÜTTE (German, born 1954)  
*Frauenkopf (Woman's Head)*

2020

Glazed ceramic on steel pedestal

Ceramic: 22 13/16 × 13 3/8 × 19 5/16" (58 × 34 × 49 cm)

Pedestal: 47 1/4 × 15 3/4 × 23 5/8" (120 × 40 × 60 cm)

Collection the artist, Düsseldorf



THOMAS SCHÜTTE (German, born 1954)

*Frauenkopf (implodiert) (Woman's Head [Imploded])*

2020

Glazed ceramic and steel on steel pedestal

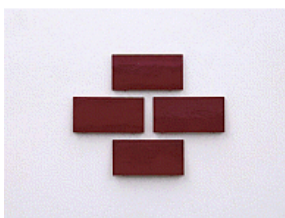
Ceramic: 12 1/8 × 20 1/2 × 22 1/2" (30.8 × 52.1 × 57.2 cm)

Pedestal: 47 1/4 × 15 3/4 × 23 5/8" (120 × 40 × 60 cm)

Collection Eleanor Heyman Propp



THOMAS SCHÜTTE (German, born 1954)  
*Schwarze Girlande (Black Garland)*  
1980  
Fabric, seven parts  
Various lengths from 141 3/4" (360 cm) to 159 7/16" (405 cm)  
Installation dimensions variable  
Courtesy Konrad Fischer Galerie, Düsseldorf



THOMAS SCHÜTTE (German, born 1954)  
*Schwäbisch Hall*  
1980  
Lacquer on plastic, four parts  
Each: 3 15/16 x 7 7/8" (10 x 20 cm)  
Overall: 13 3/8 x 16 9/16" (34 x 42 cm)  
Courtesy Konrad Fischer Galerie, Düsseldorf



THOMAS SCHÜTTE (German, born 1954)  
*Kollektion (Collection)*  
1980  
Fabric, eight parts  
Various lengths from 83 1/16" (211 cm) to 127 3/8" (323.5 cm)  
Overall: 124 x 127 9/16" (315 x 324 cm)  
Herbert Foundation, Ghent



THOMAS SCHÜTTE (German, born 1954)  
*Mein Grab (My Grave)*  
1981  
Lacquer on wood on fiberboard pedestal  
Model: 20 1/2 x 24 13/16 x 9 13/16" (52 x 63 x 25 cm)  
Pedestal: 45 11/16 x 29 1/2 x 13 3/4" (116 x 75 x 35 cm)  
Collection the artist, Düsseldorf



THOMAS SCHÜTTE (German, born 1954)  
*Mein Grab (My Grave)*  
1981  
Lacquer on paper  
51 3/16 x 43 5/16" (130 x 110 cm)  
Collection the artist, Düsseldorf



THOMAS SCHÜTTE (German, born 1954)  
*Alain Colas*

1989

Clay, polystyrene, paint, foam, cardboard, wood, and wire on two wooden pallets

45 7/8 × 47 7/16 × 31 1/2" (116.5 × 120.5 × 80 cm)

Museo d'Arte della Svizzera Italiana, Lugano, Switzerland. Collection Cantone Ticino. Donation Panza di Biumo



THOMAS SCHÜTTE (German, born 1954)

*Projekt "Monument Alain Colas" (Alain Colas Monument Project)*

1989

Figure of modeling clay and painted wood with chain and fishing hook; watercolor, pencil, and felt-tipped pen on paper; collage with watercolor, ink, paint, varnish, and felt-tipped pen on paper; three photocopies

Figure: 20 1/2 × 4 1/8 × 3 1/8" (52 × 10.5 × 8 cm)

Each sheet various dimensions from 7 7/8 × 10 1/2" (20 × 26.7 cm) to 11 5/8 × 16 9/16" (29.5 × 42 cm)

Private collection



THOMAS SCHÜTTE (German, born 1954)

*Zeichnung für Alain Colas (Drawing for Alain Colas)*

1989

Collage with ink on paper

23 5/8 × 31 1/2" (60 × 80 cm)

Private collection, Berlin



THOMAS SCHÜTTE (German, born 1954)

*Memory = Gravety => from Walser Drawings*

2011

Watercolor, ink and crayon on paper

14 15/16 × 11" (38 × 28 cm)

Collection the artist, Düsseldorf



THOMAS SCHÜTTE (German, born 1954)

*Good Loock from Walser Drawings*

2011

Watercolor, ink and crayon on paper

14 15/16 × 11" (38 × 28 cm)

Collection the artist, Düsseldorf



THOMAS SCHÜTTE (German, born 1954)  
*Untitled from Walsler Drawings*  
2012  
Watercolor, ink, and crayon on paper  
14 15/16 × 11" (38 × 28 cm)  
Collection the artist, Düsseldorf



THOMAS SCHÜTTE (German, born 1954)  
*Tomorrow No Sorrow from Walsler Drawings*  
2012  
Watercolor, ink, and crayon on paper  
14 15/16 × 11" (38 × 28 cm)  
Collection the artist, Düsseldorf





THOMAS SCHÜTTE (German, born 1954)  
*Hauptstadt (Capital)*

1981

Acrylic and alkyd, seven sheets

Each: 53 1/8 × 43 5/16" (135 × 110 cm)

The Museum of Modern Art, New York. Gift of Jan Christiaan Braun in honor of Konrad Fischer



THOMAS SCHÜTTE (German, born 1954)  
*Modell für ein Museum (Model for a Museum)*

1982

Paint on wood, on felt on tables, and two lacquer-on-paper drawings on easels

Model: 92 1/2 × 78 3/4 × 23 5/8" (235 × 200 × 60 cm)

Each easel: 78 3/4 × 59 1/16 × 27 9/16" (200 × 150 × 70 cm)

Kunstmuseum Bern, Stiftung Kunsthalle Bern



THOMAS SCHÜTTE (German, born 1954)  
*Studio I*

1983

Paint on wood

Model: 34 1/4 × 16 1/8 × 50 3/8" (87 × 41 × 128 cm)

Table: 36 7/16 × 33 7/16 × 68 7/8" (92.5 × 85 × 175 cm)

Herbert Foundation, Ghent



THOMAS SCHÜTTE (German, born 1954)  
*Studio II*

1983

Paint on wood

Model: 42 1/8 × 42 1/2 × 30 5/16" (107 × 108 × 77 cm)

Table: 37 × 51 1/4 × 59 1/16" (94 × 130.2 × 150 cm)

Herbert Foundation, Ghent



THOMAS SCHÜTTE (German, born 1954)  
*Landhaus 4 (Country House 4)*

1986

Paint on wood with model car

Model: 39 3/4 × 35 13/16 × 33 7/8" (101 × 91 × 86 cm)

Table: 37 13/16 × 51 3/16 × 47 1/4" (96 × 130 × 120 cm)

Herbert Foundation, Ghent





THOMAS SCHÜTTE (German, born 1954)  
*Frauenkopf mit Blume (Woman's Head with Flower)*

2006

Aluminum and lacquer on steel pedestal

Aluminum: 13 × 25 9/16 × 19 11/16" (33 × 65 × 50 cm)

Pedestal: 47 1/4 × 17 11/16 × 17 11/16" (120 × 45 × 45 cm)

Collection the artist, Düsseldorf



THOMAS SCHÜTTE (German, born 1954)

*Melonely*

1986

Paint on wood, 11 parts, and gouache and watercolor on paper, 14 sheets

Each wooden part: 39 3/8 × 19 11/16 × 90 9/16" (100 × 50 × 230 cm)

Each sheet: 25 9/16 × 19 11/16" (65 × 50 cm)

Installation dimensions variable

Private collection



THOMAS SCHÜTTE (German, born 1954)

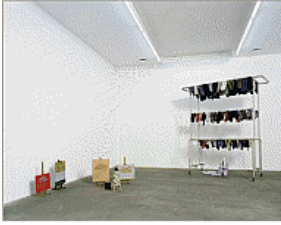
*Melonen (Melons)*

1986

Lacquer on paper

55 1/2 × 43 5/16" (141 × 110 cm)

De Pont Museum, Tilburg, Netherlands



THOMAS SCHÜTTE (German, born 1954)

*Mohr's Life*

1988

Two figures of modeling clay with fabric, string, and wooden dowels; four oil paintings on easels; two painted tin cans; and iron rack with socks  
70 7/8 × 137 13/16 × 137 13/16" (180 × 350 × 350 cm)

Private collection



THOMAS SCHÜTTE (German, born 1954)

*Mohr's Life: The Collectors*

1988-99

Figure of cast resin; seven figures of modeling clay with fabric, string, and wooden dowels; taped cardboard wardrobe moving box with clothes on hangers; and clamp lamp and cable reel

63 × 78 3/4 × 78 3/4" (160 × 200 × 200 cm)

Private collection



THOMAS SCHÜTTE (German, born 1954)

*Mohr's Life: The Sculptor*

1988-99

Figure of modeling clay with fabric, string, hat, nail, and wooden dowels; unfired painted clay on brick on wooden table; raffia basket with nails; reading lamp on paint can; and metal shelving with shoes and unfired clay bust

63 × 82 11/16 × 70 7/8" (160 × 210 × 180 cm)

Private collection



THOMAS SCHÜTTE (German, born 1954)

Untitled

2022

Sketchbooks in metal frames

Various dimensions from 13 × 11 7/16 × 1 3/8" (33 × 29 × 3.5 cm) to 16 1/8 × 19 11/16 × 1 3/8" (41 × 50 × 3.5 cm)

Collection the artist, Düsseldorf



THOMAS SCHÜTTE (German, born 1954)  
*Schwarze Zitronen (Black Lemons)*

1990

Glazed ceramic, 20 parts

Ten parts 21 5/8 × 14 3/16" (55 × 36 cm), ten parts 27 3/16 × 16 1/8" (69 × 41 cm)

Paris Musées / Musée d'Art Moderne



THOMAS SCHÜTTE (German, born 1954)  
*United Enemies*

1993

Two figures of modeling clay, fabric, string, and wood on plastic pedestal with glass bell jar

75 3/16 × 10 1/4 × 10 1/4" (191 × 26 × 26 cm)

Tate



THOMAS SCHÜTTE (German, born 1954)  
*United Enemies*

1993

Two figures of modeling clay, fabric, string, and wood on plastic pedestal with glass bell jar

75 3/16 × 10 1/4 × 10 1/4" (191 × 26 × 26 cm)

Tate



THOMAS SCHÜTTE (German, born 1954)  
*United Enemies*

1993

Two figures of modeling clay, fabric, string, and wood on plastic pedestal with glass bell jar

75 3/16 × 10 1/4 × 10 1/4" (191 × 26 × 26 cm)

Tate



THOMAS SCHÜTTE (German, born 1954)  
*Großer Respekt (Large Respect)*

1994

Steel and patinated bronze

45 11/16 × 177 3/16 × 216 9/16" (116 × 450 × 550 cm)

De Pont Museum, Tilburg, Netherlands



THOMAS SCHÜTTE (German, born 1954)  
*United Enemies*

1994

Two figures of modeling clay, fabric, string, and wood on plastic pedestal with glass bell jar

74 × 9 13/16 × 9 13/16" (188 × 25 × 25 cm)

De Pont Museum, Tilburg, Netherlands



THOMAS SCHÜTTE (German, born 1954)  
*United Enemies*

1994

Two figures of modeling clay, fabric, string, and wood on plastic pedestal with glass bell jar

74 × 9 13/16 × 9 13/16" (188 × 25 × 25 cm)

De Pont Museum, Tilburg, Netherlands



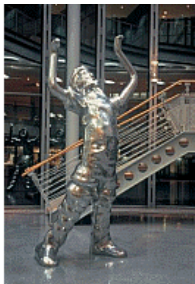
THOMAS SCHÜTTE (German, born 1954)  
*United Enemies*

1994

Two figures of modeling clay, fabric, string, and wood on plastic pedestal with glass bell jar

74 × 9 13/16 × 9 13/16" (188 × 25 × 25 cm)

De Pont Museum, Tilburg, Netherlands



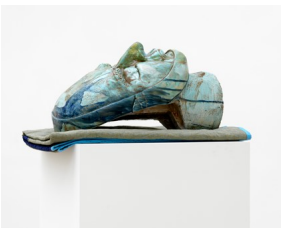
THOMAS SCHÜTTE (German, born 1954)  
*Großer Geist Nr. 6 (Large Spirit No. 6)*

1996

Polished aluminum

114 3/16 × 55 1/8 × 31 1/2" (290 × 140 × 80 cm)

Kunstmuseum Wolfsburg, Germany. Donation from the Freundeskreis des Kunstmuseums Wolfsburg e.V.



THOMAS SCHÜTTE (German, born 1954)  
*Grüner Kopf (Konrad) (Green Head [Konrad])*

1997

Glazed ceramic and blanket on wood pedestal

Ceramic and blanket: 14 3/4 × 29 1/2 × 16 3/4" (37.5 × 74.9 × 42.5 cm)

Pedestal: 45 1/4 × 25 9/16 × 19 11/16" (115 × 65 × 50 cm)

Kunstsammlung Nordrhein-Westfalen, Düsseldorf. Donation of Dorothee and Konrad Fischer 2015



THOMAS SCHÜTTE (German, born 1954)  
*Blumen für Konrad (Flowers for Konrad)*

1997-98

Watercolor on paper, one of 12 sheets  
15 3/8 × 11 7/16" (39 × 29 cm)

Kunstsammlung Nordrhein-Westfalen, Düsseldorf. Donation of Dorothee and Konrad Fischer 2015



THOMAS SCHÜTTE (German, born 1954)  
*Blumen für Konrad (Flowers for Konrad)*

1997-98

Watercolor on paper, one of 12 sheets  
15 3/8 × 11 7/16" (39 × 29 cm)

Kunstsammlung Nordrhein-Westfalen, Düsseldorf. Donation of Dorothee and Konrad Fischer 2015



THOMAS SCHÜTTE (German, born 1954)  
*Blumen für Konrad (Flowers for Konrad)*

1997-98

Watercolor on paper, one of 12 sheets  
15 3/8 × 11 7/16" (39 × 29 cm)

Kunstsammlung Nordrhein-Westfalen, Düsseldorf. Donation of Dorothee and Konrad Fischer 2015



THOMAS SCHÜTTE (German, born 1954)  
*Blumen für Konrad (Flowers for Konrad)*

1997-98

Watercolor on paper, one of 12 sheets  
15 3/8 × 11 7/16" (39 × 29 cm)

Kunstsammlung Nordrhein-Westfalen, Düsseldorf. Donation of Dorothee and Konrad Fischer 2015



THOMAS SCHÜTTE (German, born 1954)  
*Blumen für Konrad (Flowers for Konrad)*

1997-98

Watercolor on paper, one of 12 sheets  
15 3/8 × 11 7/16" (39 × 29 cm)

Kunstsammlung Nordrhein-Westfalen, Düsseldorf. Donation of Dorothee and Konrad Fischer 2015



THOMAS SCHÜTTE (German, born 1954)  
*Blumen für Konrad (Flowers for Konrad)*

1997-98

Watercolor on paper, one of 12 sheets

15 3/8 × 11 7/16" (39 × 29 cm)

Kunstsammlung Nordrhein-Westfalen, Düsseldorf. Donation of Dorothee and Konrad Fischer 2015



THOMAS SCHÜTTE (German, born 1954)  
*Blumen für Konrad (Flowers for Konrad)*

1997-98

Watercolor on paper, one of 12 sheets

15 3/8 × 11 7/16" (39 × 29 cm)

Kunstsammlung Nordrhein-Westfalen, Düsseldorf. Donation of Dorothee and Konrad Fischer 2015



THOMAS SCHÜTTE (German, born 1954)  
*Blumen für Konrad (Flowers for Konrad)*

1997-98

Watercolor on paper, one of 12 sheets

15 3/8 × 11 7/16" (39 × 29 cm)

Kunstsammlung Nordrhein-Westfalen, Düsseldorf. Donation of Dorothee and Konrad Fischer 2015



THOMAS SCHÜTTE (German, born 1954)  
*Blumen für Konrad (Flowers for Konrad)*

1997-98

Watercolor on paper, one of 12 sheets

15 3/8 × 11 7/16" (39 × 29 cm)

Kunstsammlung Nordrhein-Westfalen, Düsseldorf. Donation of Dorothee and Konrad Fischer 2015



THOMAS SCHÜTTE (German, born 1954)  
*Blumen für Konrad (Flowers for Konrad)*

1997-98

Watercolor on paper, one of 12 sheets

15 3/8 × 11 7/16" (39 × 29 cm)

Kunstsammlung Nordrhein-Westfalen, Düsseldorf. Donation of Dorothee and Konrad Fischer 2015





THOMAS SCHÜTTE (German, born 1954)  
*Blumen für Konrad (Flowers for Konrad)*

1997-98

Watercolor on paper, one of 12 sheets

15 3/8 × 11 7/16" (39 × 29 cm)

Kunstsammlung Nordrhein-Westfalen, Düsseldorf. Donation of Dorothee and Konrad Fischer 2015



THOMAS SCHÜTTE (German, born 1954)  
*Blumen für Konrad (Flowers for Konrad)*

1997-98

Watercolor on paper, one of 12 sheets

15 3/8 × 11 7/16" (39 × 29 cm)

Kunstsammlung Nordrhein-Westfalen, Düsseldorf. Donation of Dorothee and Konrad Fischer 2015



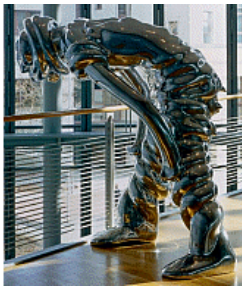
THOMAS SCHÜTTE (German, born 1954)  
*Großer Geist Nr. 8 (Large Spirit No. 8)*

1997

Polished aluminum

98 7/16 × 59 1/16 × 39 3/8" (250 × 150 × 100 cm)

Kunstmuseum Wolfsburg, Germany. Donation from the Freundeskreis des Kunstmuseums Wolfsburg e.V.



THOMAS SCHÜTTE (German, born 1954)  
*Großer Geist Nr. 17 (Large Spirit No. 17)*

2000

Polished aluminum

68 7/8 × 66 15/16 × 47 1/4" (175 × 170 × 120 cm)

Kunstmuseum Wolfsburg, Germany. Donation from the Freundeskreis des Kunstmuseums Wolfsburg e.V.



THOMAS SCHÜTTE (German, born 1954)  
*Wichte (Jerks)*

2006

Twelve patinated bronzes on steel shelves

Each bronze approx.: 13 3/4 × 13 3/4 × 11 13/16" (35 × 35 × 30 cm)

Shelves, two sizes: 11 13/16 × 13 3/4 × 12 5/8" (30 × 35 × 32 cm) and 11

13/16 × 19 11/16 × 12 5/8" (30 × 50 × 32 cm)

Thomas Schütte Stiftung, Neuss, Germany



THOMAS SCHÜTTE (German, born 1954)  
*Glaskopf B Nr. 12 (Glass Head B No. 12)*

2013

Glass on steel pedestal

Glass: 14 15/16 × 13 3/4 × 9 7/16" (38 × 35 × 24 cm)

Pedestal: 47 1/4 × 17 11/16 × 17 11/16" (120 × 45 × 45 cm)

Collection the artist, Düsseldorf



THOMAS SCHÜTTE (German, born 1954)  
*Glaskopf A Nr. 7 (Glass Head A No. 7)*

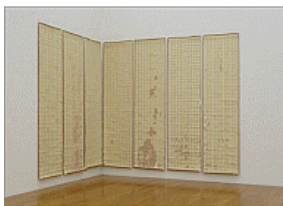
2013

Glass on steel pedestal

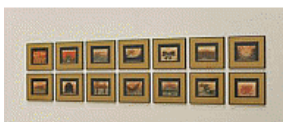
Glass: 16 1/8 × 12 3/16 × 9 1/16" (41 × 31 × 23 cm)

Pedestal: 47 1/4 × 17 11/16 × 17 11/16" (120 × 45 × 45 cm)

Collection the artist, Düsseldorf



THOMAS SCHÜTTE (German, born 1954)  
*Große Tapeten (Large Wallpapers)*  
1975  
Emulsion paint on packing paper, seven sheets  
Each: 151 9/16 × 37" (385 × 94 cm)  
Collection the artist, Düsseldorf



THOMAS SCHÜTTE (German, born 1954)  
*Skizzen zum Projekt Großes Theater (Sketches for the Large Theater Project)*  
1980  
Chromogenic color prints, 14 sheets  
Each: 15 3/4 × 19 11/16" (40 × 50 cm)  
Collection the artist, Düsseldorf



THOMAS SCHÜTTE (German, born 1954)  
*Basement II*  
1993  
Wood and sawdust  
42 × 59 × 80 3/4" (106.7 × 149.9 × 205.1 cm)  
Glenstone Museum, Potomac, Maryland



THOMAS SCHÜTTE (German, born 1954)  
*Krieger*  
2012  
Wood  
9' 11 1/4" x 49 1/2" x 45 1/8" (302.9 x 125.7 x 114.6 cm) and 9' 9" 1/2 x 49 1/2" x 45 1/8" (298.5 x 125.7 x 114.6 cm)  
The Museum of Modern Art, New York. Acquired through the generosity of Glenn Dubin, Donald B. Marron, Jerry I. Speyer, Marlene Hess, Anne Dias Griffin, Mimi Haas, Gary Winnick, Edgar Wachenheim III, and Committee on Painting and Sculpture Funds



THOMAS SCHÜTTE (German, born 1954)  
*Silberne Ringe (Silver Rings)*

1981  
Adhesive vinyl  
Each: 4 1/8" (10.5 cm) diam.  
Installation dimensions variable  
Collection the artist, Düsseldorf



THOMAS SCHÜTTE (German, born 1954)  
*Ceramic Sketches*

1997-99  
Three steel shelving units with 36 glazed ceramics  
Each unit: 84 1/4 x 90 9/16 x 19 11/16" (214 x 230 x 50 cm)  
Each ceramic approx.: 9 13/16 x 13 x 7 7/8" (25 x 33 x 20 cm)  
Kunstsammlung Nordrhein-Westfalen, Düsseldorf



THOMAS SCHÜTTE (German, born 1954)  
*Stahlfrau Nr. 1 (Steel Woman No. 1)*

1998  
Steel on steel table  
63 x 98 9/16 x 49 1/4" (160 x 250.3 x 125.1 cm)  
The Museum of Modern Art, New York. Promised gift of Eva and Glenn Dubin



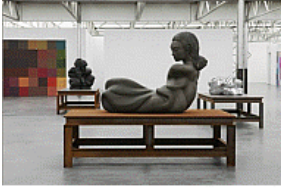
THOMAS SCHÜTTE (German, born 1954)  
*Aluminiumfrau Nr. 6 (Aluminum Woman No. 6)*

2001  
Aluminum and lacquer on steel table  
64 3/16 x 98 7/16 x 49 3/16" (163 x 250 x 125 cm)  
Thomas Schütte Stiftung, Neuss, Germany



THOMAS SCHÜTTE (German, born 1954)  
*Aluminiumfrau Nr. 16 (Aluminum Woman No. 16)*

2005  
Aluminum on steel table  
70 7/8 x 98 7/16 x 49 3/16" (180 x 250 x 125 cm)  
Thomas Schütte Stiftung, Neuss, Germany



THOMAS SCHÜTTE (German, born 1954)  
*Bronzefrau Nr. 17 (Bronze Woman No. 17)*

2006

Patinated bronze on steel table

80 5/16 × 98 7/16 × 49 3/16" (204 × 250 × 125 cm)

The Art Institute of Chicago. Through prior gifts or bequests of Leo S. Guthman, Fowler McCormick, Albert A. Robin, Marguerita S. Ritman, Emily Crane Chadbourne, Florence S. McCormick, and Judith Neisser; purchased with funds provided by Per Skarstedt; 20th Century Purchase and Robert and Marlene Baumgarten funds



THOMAS SCHÜTTE (German, born 1954)  
*Frauen Series A*

2006

Etching on paper with chine collé, 1 of 18 sheets

27 1/4 × 36" (69.2 × 91.4 cm)

Collection Peter Freeman and Lluïsa Sàrries Zgonc, New York



THOMAS SCHÜTTE (German, born 1954)  
*Frauen Series A*

2006

Etching on paper with chine collé, 1 of 18 sheets

27 1/4 × 36" (69.2 × 91.4 cm)

Collection Peter Freeman and Lluïsa Sàrries Zgonc, New York



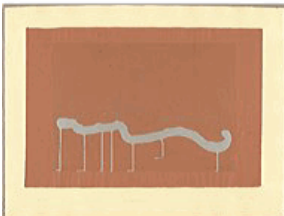
THOMAS SCHÜTTE (German, born 1954)  
*Frauen Series A*

2006

Etching on paper with chine collé, 1 of 18 sheets

27 1/4 × 36" (69.2 × 91.4 cm)

Collection Peter Freeman and Lluïsa Sàrries Zgonc, New York



THOMAS SCHÜTTE (German, born 1954)  
*Frauen Series A*

2006

Etching on paper with chine collé, 1 of 18 sheets

27 1/4 × 36" (69.2 × 91.4 cm)

Collection Peter Freeman and Lluïsa Sàrries Zgonc, New York



THOMAS SCHÜTTE (German, born 1954)  
*Frauen Series A*

2006  
Etching on paper with chine collé, 1 of 18 sheets  
27 1/4 × 36" (69.2 × 91.4 cm)  
Collection Peter Freeman and Lluïsa Sàrries Zgonc, New York



THOMAS SCHÜTTE (German, born 1954)  
*Frauen Series A*

2006  
Etching on paper with chine collé, 1 of 18 sheets  
27 1/4 × 36" (69.2 × 91.4 cm)  
Collection Peter Freeman and Lluïsa Sàrries Zgonc, New York



THOMAS SCHÜTTE (German, born 1954)  
*Frauen Series A*

2006  
Etching on paper with chine collé, 1 of 18 sheets  
27 1/4 × 36" (69.2 × 91.4 cm)  
Collection Peter Freeman and Lluïsa Sàrries Zgonc, New York



THOMAS SCHÜTTE (German, born 1954)  
*Frauen Series A*

2006  
Etching on paper with chine collé, 1 of 18 sheets  
27 1/4 × 36" (69.2 × 91.4 cm)  
Collection Peter Freeman and Lluïsa Sàrries Zgonc, New York



THOMAS SCHÜTTE (German, born 1954)  
*Frauen Series A*

2006  
Etching on paper with chine collé, 1 of 18 sheets  
27 1/4 × 36" (69.2 × 91.4 cm)  
Collection Peter Freeman and Lluïsa Sàrries Zgonc, New York



THOMAS SCHÜTTE (German, born 1954)  
*Frauen Series A*

2006  
Etching on paper with chine collé, 1 of 18 sheets  
27 1/4 × 36" (69.2 × 91.4 cm)  
Collection Peter Freeman and Lluïsa Sàrries Zgonc, New York



THOMAS SCHÜTTE (German, born 1954)  
*Frauen Series A*

2006  
Etching on paper with chine collé, 1 of 18 sheets  
27 1/4 × 36" (69.2 × 91.4 cm)  
Collection Peter Freeman and Lluïsa Sàrries Zgonc, New York



THOMAS SCHÜTTE (German, born 1954)  
*Frauen Series A*

2006  
Etching on paper with chine collé, 1 of 18 sheets  
27 1/4 × 36" (69.2 × 91.4 cm)  
Collection Peter Freeman and Lluïsa Sàrries Zgonc, New York



THOMAS SCHÜTTE (German, born 1954)  
*Frauen Series A*

2006  
Etching on paper with chine collé, 1 of 18 sheets  
27 1/4 × 36" (69.2 × 91.4 cm)  
Collection Peter Freeman and Lluïsa Sàrries Zgonc, New York



THOMAS SCHÜTTE (German, born 1954)  
*Frauen Series A*

2006  
Etching on paper with chine collé, 1 of 18 sheets  
27 1/4 × 36" (69.2 × 91.4 cm)  
Collection Peter Freeman and Lluïsa Sàrries Zgonc, New York





THOMAS SCHÜTTE (German, born 1954)  
*Frauen Series A*

2006

Etching on paper with chine collé, 1 of 18 sheets

27 1/4 × 36" (69.2 × 91.4 cm)

Collection Peter Freeman and Lluïsa Sàrries Zgonc, New York



THOMAS SCHÜTTE (German, born 1954)  
*Frauen Series A*

2006

Etching on paper with chine collé, 1 of 18 sheets

27 1/4 × 36" (69.2 × 91.4 cm)

Collection Peter Freeman and Lluïsa Sàrries Zgonc, New York



THOMAS SCHÜTTE (German, born 1954)  
*Frauen Series A*

2006

Etching on paper with chine collé, 1 of 18 sheets

27 1/4 × 36" (69.2 × 91.4 cm)

Collection Peter Freeman and Lluïsa Sàrries Zgonc, New York



THOMAS SCHÜTTE (German, born 1954)  
*Frauen Series A*

2006

Etching on paper with chine collé, 1 of 18 sheets

27 1/4 × 36" (69.2 × 91.4 cm)

Collection Peter Freeman and Lluïsa Sàrries Zgonc, New York



THOMAS SCHÜTTE (German, born 1954)  
*Still a Life from Walser Drawings*

2011

Watercolor and ink on paper

14 15/16 × 11" (38 × 28 cm)

Collection the artist, Düsseldorf



THOMAS SCHÜTTE (German, born 1954)  
*Untitled from Walser Drawings*  
2011  
Ink and crayon on paper  
14 15/16 × 11" (38 × 28 cm)  
Collection the artist, Düsseldorf



THOMAS SCHÜTTE (German, born 1954)  
*Untitled from Walser Drawings*  
2012  
Watercolor, ink and crayon on paper  
14 15/16 × 11" (38 × 28 cm)  
Collection the artist, Düsseldorf



THOMAS SCHÜTTE (German, born 1954)  
*Princess Lea from Walser Drawings*  
2012  
Watercolor, ink, and crayon on paper  
14 15/16 × 11" (38 × 28 cm)  
Collection the artist, Düsseldorf



THOMAS SCHÜTTE (German, born 1954)  
*Coconut from Walser Drawings*  
2012  
Ink on paper  
14 15/16 × 11" (38 × 28 cm)  
Collection the artist, Düsseldorf



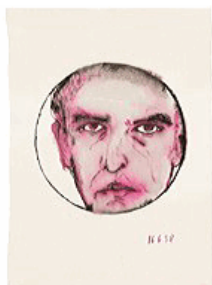
THOMAS SCHÜTTE (German, born 1954)  
*Untitled from Walser Drawings*  
2012  
Watercolor, ink, and crayon on paper  
14 15/16 × 11" (38 × 28 cm)  
Collection the artist, Düsseldorf



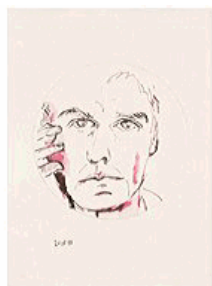
THOMAS SCHÜTTE (German, born 1954)  
*Schutzraum (Shelter)*  
1986  
Steel and sprayed concrete with steel door and sound produced by  
Andreas Hildebrandt  
129 15/16 × 104 3/4 × 170 1/2" (330 × 266 × 433 cm)  
Collection the artist, Düsseldorf



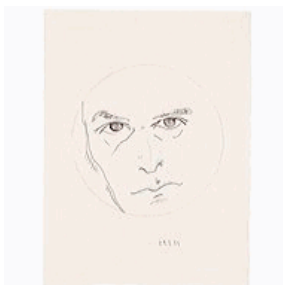
THOMAS SCHÜTTE (German, born 1954)  
*Schutzraum (Shelter)*  
1986  
Wood, paint, and cardboard on steel pedestal  
Model: 4 1/2 × 4 5/16 × 8 1/16" (11.5 × 11 × 20.5 cm)  
Pedestal: 47 1/4 × 17 11/16 × 14 3/16" (120 × 45 × 36 cm)  
Collection the artist, Düsseldorf



THOMAS SCHÜTTE (German, born 1954)  
*Mirror Drawing 16-6-98*  
1998  
Watercolor, ink, and pencil on paper  
14 15/16 × 11" (38 × 28 cm)  
Collection the artist, Düsseldorf



THOMAS SCHÜTTE (German, born 1954)  
*Mirror Drawing 20-10-98*  
1998  
Watercolor, ink, and pencil on paper  
14 15/16 × 11" (38 × 28 cm)  
Collection the artist, Düsseldorf



THOMAS SCHÜTTE (German, born 1954)  
*Mirror Drawing 29-3-99*  
1999  
Ink and crayon on paper  
14 15/16 × 11" (38 × 28 cm)  
Collection the artist, Düsseldorf



THOMAS SCHÜTTE (German, born 1954)  
*Mirror Drawing 3-6-99*  
1999  
Ink and crayon on paper  
14 15/16 × 11" (38 × 28 cm)  
Collection the artist, Düsseldorf



THOMAS SCHÜTTE (German, born 1954)  
*Mirror Drawing 14-3-99*  
1999  
Ink and pencil on paper  
14 15/16 × 11" (38 × 28 cm)  
Collection the artist, Düsseldorf



THOMAS SCHÜTTE (German, born 1954)  
*Mirror Drawing 16-2-99*  
1999  
Watercolor, ink, and crayon on paper  
14 15/16 × 11" (38 × 28 cm)  
Collection the artist, Düsseldorf



THOMAS SCHÜTTE (German, born 1954)  
*Mirror Drawing 29-3-99*  
1999  
Watercolor, ink, and pencil on paper  
14 15/16 × 11" (38 × 28 cm)  
Collection the artist, Düsseldorf



THOMAS SCHÜTTE (German, born 1954)  
*Mirror Drawing 10-5-99*  
1999  
Ink and crayon on paper  
14 15/16 × 11" (38 × 28 cm)  
Collection the artist, Düsseldorf



THOMAS SCHÜTTE (German, born 1954)  
*Old Friend Revisited No. 6*

2021

Glazed ceramic on steel pedestal

Ceramic: 18 1/8 × 12 3/16 × 13 3/4" (46 × 31 × 35 cm)

Pedestal: 47 1/4 × 17 11/16 × 17 11/16" (120 × 45 × 45 cm)

Collection the artist, Düsseldorf



THOMAS SCHÜTTE (German, born 1954)  
*Old Friend Revisited No. 8*

2021

Glazed ceramic on steel pedestal

Ceramic: 18 1/8 × 12 5/8 × 15 15/16" (46 × 32 × 40.5 cm)

Pedestal: 47 1/4 × 17 11/16 × 17 11/16" (120 × 45 × 45 cm)

Collection the artist, Düsseldorf



THOMAS SCHÜTTE (German, born 1954)  
*Old Friend Revisited No. 18*

2021

Glazed ceramic on steel pedestal

Ceramic: 18 1/2 × 14 9/16 × 13 3/16" (47 × 37 × 33.5 cm)

Pedestal: 47 1/4 × 17 11/16 × 17 11/16" (120 × 45 × 45 cm)

Collection the artist, Düsseldorf



THOMAS SCHÜTTE (German, born 1954)  
*Old Friend Revisited No. 21*

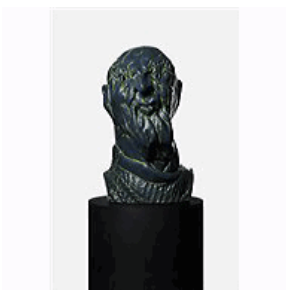
2021

Glazed ceramic on steel pedestal

Ceramic: 21 1/16 × 15 3/8 × 14" (53.5 × 39 × 35.5 cm)

Pedestal: 47 1/4 × 17 11/16 × 17 11/16" (120 × 45 × 45 cm)

Collection the artist, Düsseldorf



THOMAS SCHÜTTE (German, born 1954)  
*Old Friend Revisited No. 27*

2021

Glazed ceramic on steel pedestal

Ceramic: 19 11/16 × 12 3/16 × 13 3/8" (50 × 31 × 34 cm)

Pedestal: 47 1/4 × 17 11/16 × 17 11/16" (120 × 45 × 45 cm)

Collection the artist, Düsseldorf



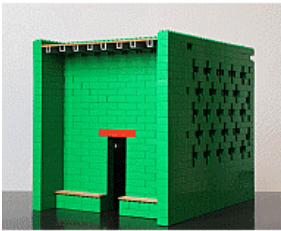
THOMAS SCHÜTTE (German, born 1954)  
*Ferienhaus für Terroristen (Modell 1:20) (Vacation Home for Terrorists [Model 1:20])*

2007

Steel and acrylic sheeting

9 3/4 × 35 7/16 × 17 11/16" (24.8 × 90 × 45 cm)

Collection the artist, Düsseldorf



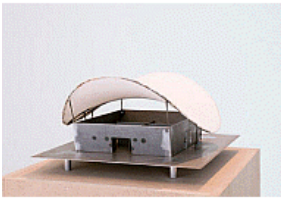
THOMAS SCHÜTTE (German, born 1954)  
*Ackermans Tempel III (Modell 1:10) (Ackerman's Temple III [Model 1:10])*

2011

Lego bricks, wood, and aluminum

19 1/8 × 17 5/8 × 23 1/16" (48.5 × 44.8 × 58.5 cm)

Collection the artist, Düsseldorf



THOMAS SCHÜTTE (German, born 1954)  
*Skulpturenhalle I (Modell 1:100) (Skulpturenhalle I [Model 1:100])*

2011

Steel and fabric

9 1/4 × 16 7/16 × 19 3/4" (23.5 × 41.8 × 50.2 cm)

Collection the artist, Düsseldorf



THOMAS SCHÜTTE (German, born 1954)  
*Pringles*

2011

Potato chip on matchbox

1 3/8 × 1 7/8 × 2 3/4" (3.5 × 4.8 × 7 cm)

Collection the artist, Düsseldorf



THOMAS SCHÜTTE (German, born 1954)  
*Teehaus (Modell 1:10) (Tea House [Model 1:10])*

2012/2013

Paint on wood with acrylic sheeting

14 × 14 3/16 × 14 3/16" (35.5 × 36 × 36 cm)

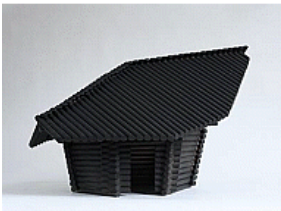
Collection the artist, Düsseldorf



THOMAS SCHÜTTE (German, born 1954)  
*Tempel Robelin (Modell 1:20) (Robelin Tempel [Model 1:20])*  
2012  
Styrofoam, porcelain, metal, and wood  
14 × 14 3/16 × 14 3/16" (35.5 × 36 × 36 cm)  
Collection the artist, Düsseldorf



THOMAS SCHÜTTE (German, born 1954)  
*Holzturn (Modell 1:20) (Wooden Tower [Model 1:20])*  
2012  
Wood and glass  
22 13/16 × 23 13/16 × 23 13/16" (58 × 60.5 × 60.5 cm)  
Collection the artist, Düsseldorf



THOMAS SCHÜTTE (German, born 1954)  
*Blockhaus (Modell 1:15) (Log House [Model 1:15])*  
2013  
Spray paint on wood  
18 1/8 × 26 3/4 × 22 7/16" (46 × 68 × 57 cm)  
Collection the artist, Düsseldorf



THOMAS SCHÜTTE (German, born 1954)  
*Kristall I (Modell 1:10) (Crystal I [Model 1:10])*  
2013  
Wood, cardboard, and paint  
15 3/4 × 16 3/4 × 15 3/8" (40 × 42.5 × 39 cm)  
Collection the artist, Düsseldorf



THOMAS SCHÜTTE (German, born 1954)  
*Bibliothek (Modell 1:10) (Library [Model 1:10])*  
2014  
Wood  
23 1/4 × 43 5/16 × 23 5/8" (59 × 110 × 60 cm)  
Collection the artist, Düsseldorf





THOMAS SCHÜTTE (German, born 1954)  
*Hütte (Modell 1:15) (Hut [Model 1:15])*

2016

Fiberboard, spray paint, and wood

14 3/4 × 23 5/8 × 22 1/16" (37.5 × 60 × 56 cm)

Collection the artist, Düsseldorf



THOMAS SCHÜTTE (German, born 1954)

*Krefeld Pavillon (Modell 1:25) (Krefeld Pavilion [Model 1:25])*

2016

Copper, fiberboard, and wood

14 9/16 × 31 1/2 × 31 1/2" (37 × 80 × 80 cm)

Collection the artist, Düsseldorf



THOMAS SCHÜTTE (German, born 1954)

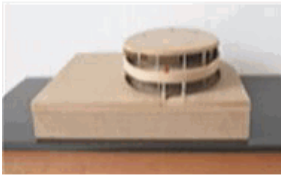
*Spartà Hut (Model 1:10)*

2016/2019

Wood

12 3/16 × 13 3/4 × 23 3/8" (31 × 35 × 59.3 cm)

Collection the artist, Düsseldorf



THOMAS SCHÜTTE (German, born 1954)

*Skulpturenhalle Erweiterungsbau II (Modell 1:50) (Skulpturenhalle Expansion II [Model 1:50])*

2018

Wood, fiberboard, and aluminum

9 1/4 × 23 5/8 × 23 5/8" (23.5 × 60 × 60 cm)

Collection the artist, Düsseldorf



THOMAS SCHÜTTE (German, born 1954)

*Pilz (Modell 1:10) (Mushroom [Model 1:10])*

2021

Steel, copper, and wood

15 3/4 × 20 1/16 × 20 1/16" (40 × 51 × 51 cm)

Collection the artist, Düsseldorf



THOMAS SCHÜTTE (German, born 1954)

*Mother Earth*

2024

Glazed ceramic on steel pedestal

Ceramic: 49 × 12 3/16 × 15 15/16" (124.5 × 31 × 40.5 cm)

Pedestal: 39 3/8 × 23 5/8 × 17 11/16" (100 × 60 × 45 cm)

Collection the artist, Düsseldorf



THOMAS SCHÜTTE (German, born 1954)  
*Die Fremden (The Strangers)*

1992

Glazed ceramic and steel

Various dimensions from 41 1/4 × 18 3/16 × 19 7/8" (104.8 × 46.2 × 50.5 cm) to 74 3/4 × 26 1/16 × 20 15/16" (189.8 × 66.2 × 53.2 cm)

Tate



THOMAS SCHÜTTE (German, born 1954)  
*Die Fremden (The Strangers)*

1992

Glazed ceramic and steel

Figure approx.: 68 7/8 × 29 1/2 × 29 1/2" (175 × 75 × 75 cm)

Pitcher approx.: 47 1/4 × 29 1/2 × 29 1/2" (120 × 75 × 75 cm)

Collection the artist, Düsseldorf



THOMAS SCHÜTTE (German, born 1954)

*Mann im Matsch (Modell 1:10) (Man in Mud [Model 1:10])*

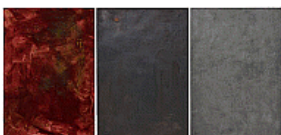
2009

Patinated bronze on steel pedestal

Bronze: 23 5/8 × 14 3/16 × 11 7/16" (60 × 36 × 29 cm)

Pedestal: 47 1/4 × 17 11/16 × 14 3/16" (120 × 45 × 36 cm)

Collection the artist, Düsseldorf



THOMAS SCHÜTTE (German, born 1954)

*Fake Flag H*

2018

Glazed ceramic, three parts

37 3/4 × 81 1/2 × 1 1/2" (95.9 × 207 × 3.8 cm)

Collection Peter Freeman and Lluïsa Sàrries Zgonc, New York



THOMAS SCHÜTTE (German, born 1954)

*Fake Flag I*

2018

Glazed ceramic, three parts

37 13/16 × 81 1/2 × 1 9/16" (96 × 207 × 4 cm)

Collection Niels Dietrich