

# The Museum of Modern Art

## Fourth Floor, 1940-1970

4th Fl: 406, Matisse's Cut-Outs: A Celebration



### Henri Matisse

*Painted paper sample reference set*

c. 1947-1954

79 pieces of gouache-painted paper

Gift of the Matisse family, 2014

SC370.2017.1-79



### Henri Matisse

*The Clown (Le Clown) from Jazz*

1947

One from a portfolio of twenty pochoirs

composition (irreg.): 16 1/4 x 12 9/16" (41.3 x 31.9 cm); sheet: 16 9/16 x 25 5/8" (42.1 x 65.1 cm)

Gift of the artist

291.1948.1



### Henri Matisse

*Circus (Le Cirque) from Jazz*

1947

One from a portfolio of twenty pochoirs

composition (irreg.): 14 1/4 x 21 15/16" (36.2 x 55.7 cm); sheet: 16 5/8 x 25 11/16" (42.2 x 65.3 cm)

Gift of the artist

291.1948.2



### Henri Matisse

*Icarus (Icare) from Jazz*

1947

One from a portfolio of twenty pochoirs

composition (irreg.): 16 1/8 x 10 15/16" (41 x 27.8 cm); sheet: 16 5/8 x 25 11/16" (42.2 x 65.3 cm)

Gift of the artist

291.1948.8



### Henri Matisse

*Forms (Formes) from Jazz*

1947

One from a portfolio of twenty pochoirs

composition (irreg.): 16 1/8 x 22 13/16" (41 x 58 cm); sheet: 16 9/16 x 25 11/16" (42.1 x 65.3 cm)

Gift of the artist

291.1948.9

## Fourth Floor, 1940-1970

4th Fl: 406, Matisse's Cut-Outs: A Celebration



### Henri Matisse

*The Cowboy (Le Cow-boy) from Jazz*

1947

One from a portfolio of twenty pochoirs

composition (irreg.) and sheet: 16 5/8 x 25 9/16" (42.3 x 65 cm)

Gift of the artist

291.1948.14



### Henri Matisse

*Cover design for Matisse: His Art and His Public*

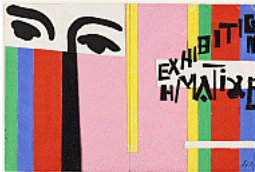
1951

Cut-and-pasted painted paper with ink on paper

10 5/8 x 16 7/8" (27.0 x 42.9 cm)

Transferred from The Museum of Modern Art Publications Department

418.1953



### Henri Matisse

*Cover design for exhibition catalogue Henri Matisse*

1951

Gouache on paper, cut-and-pasted

10 5/8 x 15 3/4" (27.0 x 40.0 cm)

Transferred from The Museum of Modern Art Publications Department

419.1953



### Henri Matisse

*Nuit de Noël*

Paris, summer-fall 1952

Stained glass

11' 3/4" x 54 3/4" x 5/8" (332.5 x 139 x 1 cm)

Gift of Time, Inc.

420.1953.a-d



### Henri Matisse

*Maquette for Nuit de Noël*

1952

Gouache on paper, cut-and-pasted on board

107 x 53 1/2" (271.8 x 135.9cm)

Gift of Time Inc.

421.1953.1-5



Henri Matisse

*Jazz*

1943-47, published 1947

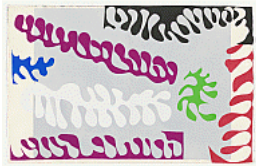
Illustrated book with twenty pochoirs

page (each approx.): 16 5/8 × 12 13/16" (42.2 × 32.5 cm); overall (closed): 16 11/16 × 13 × 1 3/4" (42.4 × 33 × 4.4 cm)

The Louis E. Stern Collection

930.1964.1-21

Cover, Page 73, Key and 930.1964.17 on view



Henri Matisse

*Lagoon (Le Lagon)* (plate XVII, pages 122 and 123) from *Jazz*

1943-47, published 1947

Pochoir from an illustrated book with twenty pochoirs

composition (irreg.): 16 9/16 × 25 1/4" (42 × 64.2 cm); sheet: 16 5/8 × 25 9/16" (42.2 × 65 cm)

The Louis E. Stern Collection

930.1964.17



Henri Matisse

*Wrapper for Jazz*

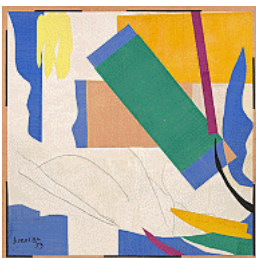
1943-47, published 1947

Wrapper for illustrated book

overall (closed): 16 11/16 × 13 × 1 3/4" (42.4 × 33 × 4.4 cm); overall (open): 16 11/16 × 27 1/4 × 1 11/16" (42.4 × 69.2 × 4.3 cm)

The Louis E. Stern Collection

930.1964.21



Henri Matisse

*Memory of Oceania*

Nice-Cimiez, Hôtel Régina, summer 1952-early 1953

Gouache on paper, cut and pasted, and charcoal on paper mounted on canvas

9' 4" × 9' 4 7/8" (284.4 × 286.4 cm)

Mrs. Simon Guggenheim Fund

224.1968



Henri Matisse

*The Swimming Pool*

Nice-Cimiez, Hôtel Régina, late summer 1952

Gouache on paper, cut and pasted, on painted paper

Overall 73" × 53' 11" (185.4 × 1643.3 cm). Installed as nine panels in two parts on burlap-covered walls 11' 4" (345.4 cm) high. Frieze installed at a height of 5' 5" (165 cm)

Mrs. Bernard F. Gimbel Fund

302.1975.a-i

## Fourth Floor, 1940-1970

4th Fl: 406, Matisse's Cut-Outs: A Celebration



### Henri Matisse

*Acrobats*

Spring - summer 1952

Gouache on paper, cut and pasted, and charcoal on white paper

83 7/8 x 82" (213 x 208.3 cm)

Private collection

LN2024.778



### Henri Matisse

*Amphitrite*

1947

Gouache on paper, cut and pasted

33 11/16 x 27 9/16" (85.5 x 70 cm)

Private collection

LN2024.779

