

MoMA PS1

Ceremonies Out of the Air: Ralph Lemon

MoMA PS1, November 14, 2024 - March 24, 2025

Entrance



RALPH LEMON (American, born 1952)

(The efflorescence of) Walter

2005

Video (color, sound)

19 min., 30 sec.

Ceremonies Out of the Air: Ralph Lemon

MoMA PS1, November 14, 2024 - March 24, 2025

Gallery 01



RALPH LEMON (American, born 1952)

KEVIN BEASLEY (American, born 1985)

Rant (redux)

2020-2024

4-channel HD video (color, 8-channel sound)

14 min.

With: Kevin Beasley, Dwayne Brown, Paul Hamilton, Darrell Jones, Ralph Lemon, Lysis (Ley), Mariama Noguera-Devers, Okwui Okpokwasili, Angie Pittman, Samita Sinha

Ceremonies Out of the Air: Ralph Lemon

MoMA PS1, November 14, 2024 - March 24, 2025

Gallery 02



RALPH LEMON (American, born 1952)

Rant Residuum

2020-2024

Video (color, silent) 9 min., 47 sec.; 18-inch subwoofer with single-channel infrasonic sound composition; plastic rooster mask, wig, polyurethane foam, duct tape, butterfly hair clip, polyurethane resin, and microphone stand; Killer Spacedog archival pigment print, wood frame, altered T-shirt, cotton and rubber slipper, gauze wrap, raw Virginia cotton, and polyurethane resin; latex hippo mask, thread, guineafowl pelt and feathers, turkey feathers, and polyurethane resin; acrylic paint and masking tape; graphite on Rives BFK paper, untitled archival pigment print, epoxy resin, and fishing line; tambourine, glass beads, polyurethane foam, sheer stocking, and polyurethane resin; "marked" laminated plywood, latex paint, and permanent marker

Dimensions variable

Ceremonies Out of the Air: Ralph Lemon

MoMA PS1, November 14, 2024 - March 24, 2025

Gallery 03



RALPH LEMON (American, born 1952)

Untitled (Black music) #1

2024

Single-channel audio

360 min.

Song transformations and programming: Philip White



RALPH LEMON (American, born 1952)

Untitled no. 1

2016

Ink, acrylic, pencil, watercolor, gansai tambi and sumi ink on paper.
One from a set of thirteen drawings from an ongoing series.

sheet: 22 1/4 × 30 1/8" (56.5 × 76.5 cm)

The Museum of Modern Art, New York. Acquired through the generosity of The Judith Rothschild Contemporary Drawings Collection Gift (by exchange) and Linda Goldstein



RALPH LEMON (American, born 1952)

Untitled no. 2

2016-17

Ink, acrylic, pencil, watercolor, gansai tambi and sumi ink on paper.
One from a set of thirteen drawings from an ongoing series.

sheet: 22 3/8 × 30 3/16" (56.8 × 76.7 cm)

The Museum of Modern Art, New York. The Judith Rothschild Contemporary Drawings Collection Gift (by exchange)



RALPH LEMON (American, born 1952)

Untitled no. 3

2017

Ink, acrylic, pencil, watercolor, gansai tambi and sumi ink on paper.
One from a set of thirteen drawings from an ongoing series.

sheet: 22 5/16 × 30 3/16" (56.7 × 76.7 cm)

The Museum of Modern Art, New York. The Judith Rothschild Contemporary Drawings Collection Gift (by exchange)

Ceremonies Out of the Air: Ralph Lemon

MoMA PS1, November 14, 2024 - March 24, 2025



RALPH LEMON (American, born 1952)

Untitled no. 4

2017

Ink, acrylic, pencil, watercolor, gansai tambi and sumi ink on paper.
One from a set of thirteen drawings from an ongoing series.

sheet: 22 7/16 × 30 1/8" (57 × 76.5 cm)

The Museum of Modern Art, New York. The Judith Rothschild Contemporary Drawings Collection Gift (by exchange)



RALPH LEMON (American, born 1952)

Untitled no. 5

2018

Ink, acrylic, pencil, watercolor, gansai tambi and sumi ink on paper.
One from a set of thirteen drawings from an ongoing series.

sheet: 22 1/4 × 30 1/8" (56.5 × 76.5 cm)

The Museum of Modern Art, New York. Acquired through the generosity of the Contemporary Arts Council of The Museum of Modern Art's 75th Anniversary Acquisition Fund



RALPH LEMON (American, born 1952)

Untitled no. 6

2018

Ink, acrylic, pencil, watercolor, gansai tambi and sumi ink on paper.
One from a set of thirteen drawings from an ongoing series.

sheet: 22 3/8 × 30 3/16" (56.8 × 76.7 cm)

The Museum of Modern Art, New York. The Judith Rothschild Contemporary Drawings Collection Gift (by exchange)



RALPH LEMON (American, born 1952)

Untitled no. 7

2019

Ink, acrylic, pencil, watercolor, gansai tambi and sumi ink on paper.
One from a set of thirteen drawings from an ongoing series.

sheet: 22 5/16 × 30 3/16" (56.7 × 76.7 cm)

The Museum of Modern Art, New York. The Judith Rothschild Contemporary Drawings Collection Gift (by exchange)



RALPH LEMON (American, born 1952)

Untitled no. 8

2020

Ink, acrylic, pencil, watercolor, gansai tambi and sumi ink on paper.
One from a set of thirteen drawings from an ongoing series.

sheet: 22 5/16 × 30 1/8" (56.7 × 76.5 cm)

The Museum of Modern Art, New York. The Judith Rothschild Contemporary Drawings Collection Gift (by exchange)

Ceremonies Out of the Air: Ralph Lemon

MoMA PS1, November 14, 2024 - March 24, 2025



RALPH LEMON (American, born 1952)

Untitled no. 9

2020

Ink, acrylic, pencil, watercolor, gansai tambi and sumi ink on paper.
One from a set of thirteen drawings from an ongoing series.

sheet: 22 5/16 × 30 1/8" (56.7 × 76.5 cm)

The Museum of Modern Art, New York. The Judith Rothschild Contemporary Drawings Collection Gift (by exchange)



RALPH LEMON (American, born 1952)

Untitled no. 10

2021

Ink, acrylic, pencil, watercolor, gansai tambi and sumi ink on paper.
One from a set of thirteen drawings from an ongoing series.

sheet: 38 3/8 × 50" (97.5 × 127 cm)

The Museum of Modern Art, New York. Acquired through the generosity of Erin and Peter Hess Friedland



RALPH LEMON (American, born 1952)

Untitled no. 11

2022

Ink, acrylic, pencil, watercolor, gansai tambi and sumi ink on paper.
One from a set of thirteen drawings from an ongoing series.

sheet: 38 3/8 × 50" (97.5 × 127 cm)

The Museum of Modern Art, New York. Acquired through the generosity of the Contemporary Arts Council of The Museum of Modern Art's 75th Anniversary Acquisition Fund



RALPH LEMON (American, born 1952)

Untitled no. 12

2023

Ink, acrylic, pencil, watercolor, gansai tambi and sumi ink on paper.
One from a set of thirteen drawings from an ongoing series.

sheet: 38 3/16 × 50" (97 × 127 cm)

The Museum of Modern Art, New York. Acquired through the generosity of Erin and Peter Hess Friedland

Ceremonies Out of the Air: Ralph Lemon

MoMA PS1, November 14, 2024 - March 24, 2025



RALPH LEMON (American, born 1952)

Untitled no. 13

2023

Ink, acrylic, pencil, watercolor, gansai tambi and sumi ink on paper.
One from a set of thirteen drawings from an ongoing series.

38 1/4 × 50" (97.2 × 127 cm)

The Museum of Modern Art, New York. Acquired through the generosity of the Contemporary Arts Council of The Museum of Modern Art's 75th Anniversary Acquisition Fund



RALPH LEMON (American, born 1952)

Consecration of Ancestor Figures #15

2024

Carved wood [Attie female figure, Ivory Coast, c. 1940] and textile
24 × 5 × 5" (61 × 12.7 × 12.7 cm)

Costume Production: Naoko Nagata



RALPH LEMON (American, born 1952)

Consecration of Ancestor Figures #16

2024

Carved wood [Mende male figure, Sierra Leone, c. 1950] and textile
30 × 7 × 7" (76.2 × 17.8 × 17.8 cm)

Costume Production: Naoko Nagata



RALPH LEMON (American, born 1952)

Consecration of Ancestor Figures #13

2024

Carved wood [Bette female figure, Ivory Coast, c. 1940] and textile
28 × 9 × 5" (71.1 × 22.9 × 12.7 cm)

Costume Production: Naoko Nagata



RALPH LEMON (American, born 1952)

Consecration of Ancestor Figures #14

2024

Carved wood [Mende male figure, Sierra Leone, c. 1940] and textile
36 × 6 × 6" (91.4 × 15.2 × 15.2 cm)

Costume Production: Naoko Nagata

Ceremonies Out of the Air: Ralph Lemon

MoMA PS1, November 14, 2024 - March 24, 2025



RALPH LEMON (American, born 1952)
Consecration of Ancestor Figures #10
2015
Carved wood and textile
15 × 2 1/2 × 2 1/2" (38.1 × 6.4 × 6.4 cm)
Costume production: Giovanna Flores



RALPH LEMON (American, born 1952)
Consecration of Ancestor Figures #9
2015
Carved wood and textile
13 × 2 1/2 × 2 1/2" (33 × 6.4 × 6.4 cm)
Costume production: Giovanna Flores



RALPH LEMON (American, born 1952)
Consecration of Ancestor Figures #4
2015
Carved wood and textile
12 × 2 1/4 × 2" (30.5 × 5.7 × 5.1 cm)
Costume production: Giovanna Flores



RALPH LEMON (American, born 1952)
Consecration of Ancestor Figures #3
2015
Carved wood and textile
6 × 2 1/4 × 2" (15.2 × 5.7 × 5.1 cm)
Costume production: Giovanna Flores

Ceremonies Out of the Air: Ralph Lemon

MoMA PS1, November 14, 2024 - March 24, 2025



RALPH LEMON (American, born 1952)
Consecration of Ancestor Figures #7
2015
Carved wood and textile
13 × 4 × 3" (33 × 10.2 × 7.6 cm)
Costume production: Giovanna Flores



RALPH LEMON (American, born 1952)
Consecration of Ancestor Figures #8
2015
Carved wood and textile
13 × 3 1/2 × 3 1/4" (33 × 8.9 × 8.3 cm)
Costume production: Giovanna Flores

Ceremonies Out of the Air: Ralph Lemon

MoMA PS1, November 14, 2024 - March 24, 2025

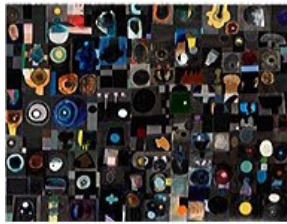
Gallery 04



RALPH LEMON (American, born 1952)
Untitled (Black music) #2
2024
Single-channel audio
360 min.
Song transformations and programming: Philip White



RALPH LEMON (American, born 1952)
Untitled 12
2023
Acrylic and oil on paper
38 1/4 × 49 7/8" (97.2 × 126.7 cm)



RALPH LEMON (American, born 1952)
Untitled 14
2024
Acrylic and oil on paper
38 1/4 × 49 7/8" (97.2 × 126.7 cm)



RALPH LEMON (American, born 1952)
Untitled 10
2022
Acrylic and oil on paper
38 1/4 × 49 7/8" (97.2 × 126.7 cm)

Ceremonies Out of the Air: Ralph Lemon

MoMA PS1, November 14, 2024 - March 24, 2025



RALPH LEMON (American, born 1952)

Untitled 11

2023

Acrylic and oil on paper

38 1/4 × 49 7/8" (97.2 × 126.7 cm)



RALPH LEMON (American, born 1952)

Untitled 9 (for Albert Aylor)

2022

Acrylic and oil on paper

38 1/4 × 49 7/8" (97.2 × 126.7 cm)



RALPH LEMON (American, born 1952)

Untitled 13

2023

Acrylic and oil on paper

38 1/4 × 49 7/8" (97.2 × 126.7 cm)



RALPH LEMON (American, born 1952)

Walter Harvesting String

2006

Video (color, sound)

20 min., looped



RALPH LEMON (American, born 1952)

Untitled 4

2020-2024

Acrylic and oil on paper

38 1/4 × 49 7/8" (97.2 × 126.7 cm)

Ceremonies Out of the Air: Ralph Lemon

MoMA PS1, November 14, 2024 - March 24, 2025



RALPH LEMON (American, born 1952)

Untitled 5

2022

Acrylic and oil on paper

38 1/4 × 49 7/8" (97.2 × 126.7 cm)

Ceremonies Out of the Air: Ralph Lemon

MoMA PS1, November 14, 2024 - March 24, 2025

Gallery 05



RALPH LEMON (American, born 1952)

Untitled

2018

Archival pigment print

Image: 10 × 7 1/2" (25.4 × 19.1 cm)



RALPH LEMON (American, born 1952)

FBN

2009-2019

Single-channel video installation with neon and aluminum platform

4 min., 2 sec.

Platform: 4 1/8 × 60 × 48" (10.5 × 152.4 × 121.9 cm)

Component: 9 1/2 × 13" (24.1 × 33 cm)

Whitney Museum of American Art, New York; Purchase, with funds from the Painting and Sculpture Committee 2019.308



RALPH LEMON (American, born 1952)

James Baldwin Dharma Talk

2004

video animation; color, sound

15 min., 6 sec.



RALPH LEMON (American, born 1952)

Untitled

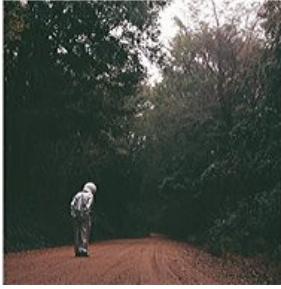
2022

Archival pigment print

Ceremonies Out of the Air: Ralph Lemon

MoMA PS1, November 14, 2024 - March 24, 2025

Gallery 06



RALPH LEMON (American, born 1952)

Untitled

2009

Archival pigment print

Image: 40 × 40" (101.6 × 101.6 cm)



RALPH LEMON (American, born 1952)

1856 Cessna Road [Chapter 1]

2008-2009

Video (color, sound)

35 min., 10 sec.

With (in order of appearance): Walter Carter, Warren (Red) Carter, Lloyd Williams, Edna Carter



RALPH LEMON (American, born 1952)

Garden [Chapter 2]

2013

Video (color, sound)

13 min., 15 sec.

With (in order of appearance): Warren (Red) Carter, Lloyd Williams, Lorraine Carter, Emma Williams, Jayden Williams



RALPH LEMON (American, born 1952)

Untitled

2009

Archival pigment print

Image: 30 9/16 × 30" (77.6 × 76.2 cm)

Ceremonies Out of the Air: Ralph Lemon

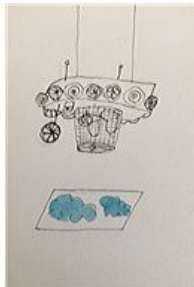
MoMA PS1, November 14, 2024 - March 24, 2025



RALPH LEMON (American, born 1952)
Untitled
2009
Archival pigment print
Image: 40 × 40" (101.6 × 101.6 cm)



RALPH LEMON (American, born 1952)
Untitled
2013
Archival pigment print
Image: 15 × 20" (38.1 × 50.8 cm)



RALPH LEMON (American, born 1952)
Installation sketch for Spaceship #1
2024
ink and watercolor on paper
Sheet: 6 × 3 1/2" (15.2 × 8.9 cm)

Ceremonies Out of the Air: Ralph Lemon

MoMA PS1, November 14, 2024 - March 24, 2025

Gallery 07



RALPH LEMON (American, born 1952)

It could be a forest [Chapter 3]

2013

Video (color, sound)

11 min., 30 sec.

With: Warren (Red) Carter

Voiceover: Ralph Lemon

Score: Kevin Beasley



RALPH LEMON (American, born 1952)

The (Killer Space) Doghouse

2015

Maplewood and video (black and white, silent)

28 × 37 × 27" (71.1 × 94 × 68.6 cm)

2 min.

Video production: Jim Findlay

Ceremonies Out of the Air: Ralph Lemon

MoMA PS1, November 14, 2024 - March 24, 2025

Gallery 08



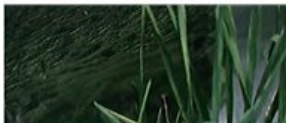
RALPH LEMON (American, born 1952)
I am the light (Sam and Dave) [Chapter 4]
2018
Video (color, sound)
15 min., 35 sec.
With: Lloyd Williams
Score: Kevin Beasley



RALPH LEMON (American, born 1952)
Saturnalia (Forest Dance) [Coda]
2018
Video (color, sound)
17 min., 29 sec.
With (in order of appearance): Edna Carter, Betty Clifron, Albert Johnson, Christy Johnson, Geneva Johnson
Score: Kevin Beasley



RALPH LEMON (American, born 1952)
Spaceman Drawings
2008-2010
Ink on paper
Each: 4 1/2 × 6 3/4" (11.4 × 17.1 cm)



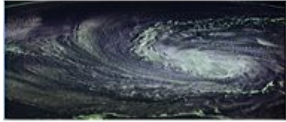
RALPH LEMON (American, born 1952)
(Solaris no people)
2008
Video (color, sound)
22 min., 45 sec.

Ceremonies Out of the Air: Ralph Lemon

MoMA PS1, November 14, 2024 - March 24, 2025



RALPH LEMON (American, born 1952)
Spaceship #1
2007
Mixed media
75 × 66 × 84" (190.5 × 167.6 × 213.4 cm)
Production: Lloyd Williams, Warren (Red) Carter



RALPH LEMON (American, born 1952)
(Solaris water)
2024
Video (color, silent)
8 min., 13 sec.

Ceremonies Out of the Air: Ralph Lemon

MoMA PS1, November 14, 2024 - March 24, 2025

Gallery 09



RALPH LEMON (American, born 1952)

Godhead under the kitchen table

2024

Aluminum, steel, LEDs, electrical wiring, and cable

table: 30 × 90 × 30" (76.2 × 228.6 × 76.2 cm)

Production: Roderick Murray, RED, 618 Design



RALPH LEMON (American, born 1952)

Hippo head

2024

Bronze

8 1/2 × 13 × 6" (21.6 × 33 × 15.2 cm)

Production: Legacy Atelier



RALPH LEMON (American, born 1952)

Hamburger and plate

2024

Bronze

Part: 7/8 × 9 × 9" (2.2 × 22.9 × 22.9 cm)

Part: 1 1/4 × 3 3/4 × 3" (3.2 × 9.5 × 7.6 cm)

Production: Legacy Atelier



RALPH LEMON (American, born 1952)

Untitled

2018

Archival pigment print

Image: 18 × 30 1/8" (45.7 × 76.5 cm)