

# MoMA PS1

## ***Ceremonies Out of the Air: Ralph Lemon***

MoMA PS1, November 14, 2024 - March 24, 2025

### **Entrance**



RALPH LEMON (American, born 1952)

*(The efflorescence of) Walter*

2005

Video (color, sound)

19 min., 30 sec.

## **Ceremonies Out of the Air: Ralph Lemon**

MoMA PS1, November 14, 2024 - March 24, 2025

### **Gallery 01**



RALPH LEMON (American, born 1952)

KEVIN BEASLEY (American, born 1985)

*Rant (redux)*

2020-2024

4-channel HD video (color, 8-channel sound)

14 min.

With: Kevin Beasley, Dwayne Brown, Paul Hamilton, Darrell Jones, Ralph Lemon, Lysis (Ley), Mariama Noguera-Devers, Okwui Okpokwasili, Angie Pittman, Samita Sinha

## Ceremonies Out of the Air: Ralph Lemon

MoMA PS1, November 14, 2024 - March 24, 2025

### Gallery 02



RALPH LEMON (American, born 1952)

KEVIN BEASLEY (American, born 1985)

*Rant Residuum*  
2020-2024

Video (color, silent) 9 min., 47 sec.; 18-inch subwoofer with single-channel infrasonic sound composition; plastic rooster mask, wig, polyurethane foam, duct tape, butterfly hair clip, polyurethane resin, and microphone stand; Killer Spacedog archival pigment print, wood frame, altered T-shirt, cotton and rubber slipper, gauze wrap, raw Virginia cotton, and polyurethane resin; latex hippo mask, thread, guineafowl pelt and feathers, turkey feathers, and polyurethane resin; acrylic paint and masking tape; graphite on Rives BFK paper, untitled archival pigment print, epoxy resin, and fishing line; tambourine, glass beads, polyurethane foam, sheer stocking, and polyurethane resin; "marked" laminated plywood, latex paint, and permanent marker  
Dimensions variable

## Ceremonies Out of the Air: Ralph Lemon

MoMA PS1, November 14, 2024 - March 24, 2025

### Gallery 03



RALPH LEMON (American, born 1952)

*Untitled (Black music) #1*

2024

Single-channel audio

360 min.

Song transformations and programming: Philip White



RALPH LEMON (American, born 1952)

*Untitled no. 1*

2016

Ink, acrylic, pencil, watercolor, gansai tambi and sumi ink on paper

One from a set of thirteen drawings from an ongoing series

Sheet: 22 1/4 × 30 1/8" (56.5 × 76.5 cm)

The Museum of Modern Art, New York. Acquired through the generosity of The Judith Rothschild Contemporary Drawings Collection Gift (by exchange) and Linda Goldstein, 2024



RALPH LEMON (American, born 1952)

*Untitled no. 2*

2016-17

Ink, acrylic, pencil, watercolor, gansai tambi and sumi ink on paper

One from a set of thirteen drawings from an ongoing series

Sheet: 22 3/8 × 30 3/16" (56.8 × 76.7 cm)

The Museum of Modern Art, New York. The Judith Rothschild Contemporary Drawings Collection Gift (by exchange), 2024



RALPH LEMON (American, born 1952)

*Untitled no. 3*

2017

Ink, acrylic, pencil, watercolor, gansai tambi and sumi ink on paper

One from a set of thirteen drawings from an ongoing series

Sheet: 22 5/16 × 30 3/16" (56.7 × 76.7 cm)

The Museum of Modern Art, New York. The Judith Rothschild Contemporary Drawings Collection Gift (by exchange), 2024

**Ceremonies Out of the Air: Ralph Lemon**

MoMA PS1, November 14, 2024 - March 24, 2025



RALPH LEMON (American, born 1952)

*Untitled no. 4*

2017

Ink, acrylic, pencil, watercolor, gansai tambi and sumi ink on paper  
One from a set of thirteen drawings from an ongoing series

Sheet: 22 7/16 × 30 1/8" (57 × 76.5 cm)

The Museum of Modern Art, New York. The Judith Rothschild Contemporary Drawings Collection Gift (by exchange), 2024



RALPH LEMON (American, born 1952)

*Untitled no. 5*

2018

Ink, acrylic, pencil, watercolor, gansai tambi and sumi ink on paper  
One from a set of thirteen drawings from an ongoing series

Sheet: 22 1/4 × 30 1/8" (56.5 × 76.5 cm)

The Museum of Modern Art, New York. Acquired through the generosity of the Contemporary Arts Council of The Museum of Modern Art's 75th Anniversary Acquisition Fund, 2024



RALPH LEMON (American, born 1952)

*Untitled no. 6*

2018

Ink, acrylic, pencil, watercolor, gansai tambi and sumi ink on paper  
One from a set of thirteen drawings from an ongoing series

Sheet: 22 3/8 × 30 3/16" (56.8 × 76.7 cm)

The Museum of Modern Art, New York. The Judith Rothschild Contemporary Drawings Collection Gift (by exchange), 2024



RALPH LEMON (American, born 1952)

*Untitled no. 7*

2019

Ink, acrylic, pencil, watercolor, gansai tambi and sumi ink on paper  
One from a set of thirteen drawings from an ongoing series

Sheet: 22 5/16 × 30 3/16" (56.7 × 76.7 cm)

The Museum of Modern Art, New York. The Judith Rothschild Contemporary Drawings Collection Gift (by exchange), 2024



RALPH LEMON (American, born 1952)

*Untitled no. 8*

2020

Ink, acrylic, pencil, watercolor, gansai tambi and sumi ink on paper  
One from a set of thirteen drawings from an ongoing series

Sheet: 22 5/16 × 30 1/8" (56.7 × 76.5 cm)

The Museum of Modern Art, New York. The Judith Rothschild Contemporary Drawings Collection Gift (by exchange), 2024

**Ceremonies Out of the Air: Ralph Lemon**

MoMA PS1, November 14, 2024 - March 24, 2025



RALPH LEMON (American, born 1952)

*Untitled no. 9*

2020

Ink, acrylic, pencil, watercolor, gansai tambi and sumi ink on paper  
One from a set of thirteen drawings from an ongoing series

Sheet: 22 5/16 × 30 1/8" (56.7 × 76.5 cm)

The Museum of Modern Art, New York. The Judith Rothschild Contemporary Drawings Collection Gift (by exchange), 2024



RALPH LEMON (American, born 1952)

*Untitled no. 10*

2021

Ink, acrylic, pencil, watercolor, gansai tambi and sumi ink on paper  
One from a set of thirteen drawings from an ongoing series

Sheet: 38 3/8 × 50" (97.5 × 127 cm)

The Museum of Modern Art, New York. Acquired through the generosity of Erin and Peter Hess Friedland, 2024



RALPH LEMON (American, born 1952)

*Untitled no. 11*

2022

Ink, acrylic, pencil, watercolor, gansai tambi and sumi ink on paper  
One from a set of thirteen drawings from an ongoing series

Sheet: 38 3/8 × 50" (97.5 × 127 cm)

The Museum of Modern Art, New York. Acquired through the generosity of the Contemporary Arts Council of The Museum of Modern Art's 75th Anniversary Acquisition Fund, 2024



RALPH LEMON (American, born 1952)

*Untitled no. 12*

2023

Ink, acrylic, pencil, watercolor, gansai tambi and sumi ink on paper  
One from a set of thirteen drawings from an ongoing series

Sheet: 38 3/16 × 50" (97 × 127 cm)

The Museum of Modern Art, New York. Acquired through the generosity of Erin and Peter Hess Friedland, 2024



**Ceremonies Out of the Air: Ralph Lemon**

MoMA PS1, November 14, 2024 - March 24, 2025



RALPH LEMON (American, born 1952)

*Untitled no. 13*

2023

Ink, acrylic, pencil, watercolor, gansai tambi and sumi ink on paper  
One from a set of thirteen drawings from an ongoing series

Sheet: 38 1/4 × 50" (97.2 × 127 cm)

The Museum of Modern Art, New York. Acquired through the generosity of the Contemporary Arts Council of The Museum of Modern Art's 75th Anniversary Acquisition Fund, 2024



RALPH LEMON (American, born 1952)

*Consecration of Ancestor Figures #15*

2024

Carved wood [Attie female figure, Ivory Coast, c. 1940] and textile  
24 × 5 × 5" (61 × 12.7 × 12.7 cm)

Costume Production: Naoko Nagata



RALPH LEMON (American, born 1952)

*Consecration of Ancestor Figures #16*

2024

Carved wood [Mende male figure, Sierra Leone, c. 1950] and textile  
30 × 7 × 7" (76.2 × 17.8 × 17.8 cm)

Costume Production: Naoko Nagata



RALPH LEMON (American, born 1952)

*Consecration of Ancestor Figures #13*

2024

Carved wood [Bette female figure, Ivory Coast, c. 1940] and textile  
28 × 9 × 5" (71.1 × 22.9 × 12.7 cm)

Costume Production: Naoko Nagata



RALPH LEMON (American, born 1952)

*Consecration of Ancestor Figures #14*

2024

Carved wood [Mende male figure, Sierra Leone, c. 1940] and textile  
36 × 6 × 6" (91.4 × 15.2 × 15.2 cm)

Costume Production: Naoko Nagata

**Ceremonies Out of the Air: Ralph Lemon**

MoMA PS1, November 14, 2024 - March 24, 2025



RALPH LEMON (American, born 1952)  
*Consecration of Ancestor Figures #10*  
2015  
Carved wood and textile  
15 × 2 1/2 × 2 1/2" (38.1 × 6.4 × 6.4 cm)  
Costume production: Giovanna Flores



RALPH LEMON (American, born 1952)  
*Consecration of Ancestor Figures #9*  
2015  
Carved wood and textile  
13 × 2 1/2 × 2 1/2" (33 × 6.4 × 6.4 cm)  
Costume production: Giovanna Flores



RALPH LEMON (American, born 1952)  
*Consecration of Ancestor Figures #4*  
2015  
Carved wood and textile  
12 × 2 1/4 × 2" (30.5 × 5.7 × 5.1 cm)  
Costume production: Giovanna Flores



RALPH LEMON (American, born 1952)  
*Consecration of Ancestor Figures #3*  
2015  
Carved wood and textile  
6 × 2 1/4 × 2" (15.2 × 5.7 × 5.1 cm)  
Costume production: Giovanna Flores



**Ceremonies Out of the Air: Ralph Lemon**

MoMA PS1, November 14, 2024 - March 24, 2025



RALPH LEMON (American, born 1952)  
*Consecration of Ancestor Figures #7*  
2015  
Carved wood and textile  
13 × 4 × 3" (33 × 10.2 × 7.6 cm)  
Costume production: Giovanna Flores



RALPH LEMON (American, born 1952)  
*Consecration of Ancestor Figures #8*  
2015  
Carved wood and textile  
13 × 3 1/2 × 3 1/4" (33 × 8.9 × 8.3 cm)  
Costume production: Giovanna Flores

## Ceremonies Out of the Air: Ralph Lemon

MoMA PS1, November 14, 2024 - March 24, 2025

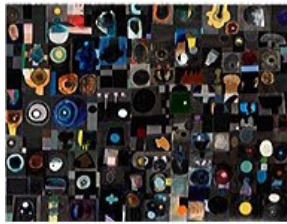
### Gallery 04



RALPH LEMON (American, born 1952)  
*Untitled (Black music) #2*  
2024  
Single-channel audio  
360 min.  
Song transformations and programming: Philip White



RALPH LEMON (American, born 1952)  
*Untitled 12*  
2023  
Acrylic and oil on paper  
38 1/4 × 49 7/8" (97.2 × 126.7 cm)



RALPH LEMON (American, born 1952)  
*Untitled 14*  
2024  
Acrylic and oil on paper  
38 1/4 × 49 7/8" (97.2 × 126.7 cm)



RALPH LEMON (American, born 1952)  
*Untitled 10*  
2022  
Acrylic and oil on paper  
38 1/4 × 49 7/8" (97.2 × 126.7 cm)

**Ceremonies Out of the Air: Ralph Lemon**

MoMA PS1, November 14, 2024 - March 24, 2025



RALPH LEMON (American, born 1952)

*Untitled 11*

2023

Acrylic and oil on paper

38 1/4 × 49 7/8" (97.2 × 126.7 cm)



RALPH LEMON (American, born 1952)

*Untitled 9 (for Albert Aylor)*

2022

Acrylic and oil on paper

38 1/4 × 49 7/8" (97.2 × 126.7 cm)



RALPH LEMON (American, born 1952)

*Untitled 13*

2023

Acrylic and oil on paper

38 1/4 × 49 7/8" (97.2 × 126.7 cm)



RALPH LEMON (American, born 1952)

*Walter Harvesting String*

2006

Video (color, sound)

20 min., looped



RALPH LEMON (American, born 1952)

*Untitled 4*

2020-2024

Acrylic and oil on paper

38 1/4 × 49 7/8" (97.2 × 126.7 cm)

**Ceremonies Out of the Air: Ralph Lemon**

MoMA PS1, November 14, 2024 - March 24, 2025



RALPH LEMON (American, born 1952)

*Untitled 5*

2022

Acrylic and oil on paper

38 1/4 × 49 7/8" (97.2 × 126.7 cm)

**Ceremonies Out of the Air: Ralph Lemon**

MoMA PS1, November 14, 2024 - March 24, 2025

**Gallery 05**



RALPH LEMON (American, born 1952)  
*Untitled*  
2018  
Archival pigment print  
Framed: 10 1/2 × 8 × 1" (26.7 × 20.3 × 2.5 cm)



RALPH LEMON (American, born 1952)  
*FBN*  
2009-2019  
Single-channel video installation with neon and aluminum platform  
4 min., 2 sec.  
Platform: 4 1/8 × 60 × 48" (10.5 × 152.4 × 121.9 cm)  
Component: 9 1/2 × 13" (24.1 × 33 cm)  
Whitney Museum of American Art, New York; Purchase, with funds from the  
Painting and Sculpture Committee 2019.308



RALPH LEMON (American, born 1952)  
*James Baldwin Dharma Talk*  
2004  
video animation; color, sound  
15 min., 6 sec.

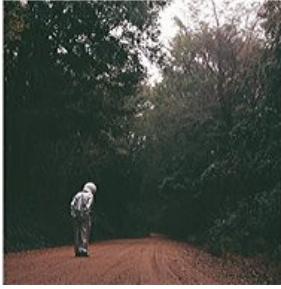


RALPH LEMON (American, born 1952)  
*Untitled*  
2022  
Archival pigment print  
Framed: 15 3/4 × 15 3/4 × 1 1/2" (40 × 40 × 3.8 cm)

**Ceremonies Out of the Air: Ralph Lemon**

MoMA PS1, November 14, 2024 - March 24, 2025

**Gallery 06**



RALPH LEMON (American, born 1952)

*Untitled*

2009

Archival pigment print

Image: 40 × 40" (101.6 × 101.6 cm)



RALPH LEMON (American, born 1952)

*1856 Cessna Road [Chapter 1]*

2008-2009

Video (color, sound)

35 min., 10 sec.

With (in order of appearance): Walter Carter, Warren (Red) Carter, Lloyd Williams, Edna Carter



RALPH LEMON (American, born 1952)

*Garden [Chapter 2]*

2013

Video (color, sound)

13 min., 15 sec.

With (in order of appearance): Warren (Red) Carter, Lloyd Williams, Lorraine Carter, Emma Williams, Jayden Williams



RALPH LEMON (American, born 1952)

*Untitled*

2009

Archival pigment print

Image: 30 9/16 × 30" (77.6 × 76.2 cm)

**Ceremonies Out of the Air: Ralph Lemon**

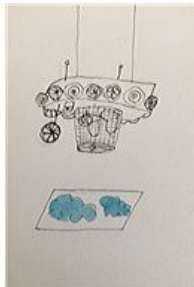
MoMA PS1, November 14, 2024 - March 24, 2025



RALPH LEMON (American, born 1952)  
*Untitled*  
2009  
Archival pigment print  
Image: 40 × 40" (101.6 × 101.6 cm)



RALPH LEMON (American, born 1952)  
*Untitled*  
2013  
Archival pigment print  
Image: 15 × 20" (38.1 × 50.8 cm)



RALPH LEMON (American, born 1952)  
*Installation sketch for Spaceship #1*  
2024  
Ink and watercolor on paper  
Sheet: 6 × 3 1/2" (15.2 × 8.9 cm)



**Ceremonies Out of the Air: Ralph Lemon**

MoMA PS1, November 14, 2024 - March 24, 2025

**Gallery 07**



RALPH LEMON (American, born 1952)

*It could be a forest [Chapter 3]*

2013

Video (color, sound)

11 min., 30 sec.

With: Warren (Red) Carter

Voiceover: Ralph Lemon

Score: Kevin Beasley



RALPH LEMON (American, born 1952)

*The (Killer Space) Doghouse*

2015

Maplewood and video (black and white, silent)

28 × 37 × 27" (71.1 × 94 × 68.6 cm)

2 min.

Video production: Jim Findlay

**Ceremonies Out of the Air: Ralph Lemon**

MoMA PS1, November 14, 2024 - March 24, 2025

**Gallery 08**



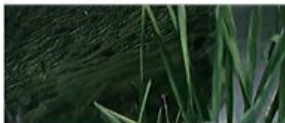
RALPH LEMON (American, born 1952)  
*I am the light (Sam and Dave) [Chapter 4]*  
2018  
Video (color, sound)  
15 min., 35 sec.  
With: Lloyd Williams  
Score: Kevin Beasley



RALPH LEMON (American, born 1952)  
*Saturnalia (Forest Dance) [Coda]*  
2018  
Video (color, sound)  
17 min., 29 sec.  
With (in order of appearance): Edna Carter, Betty Clifron, Albert Johnson, Christy Johnson, Geneva Johnson  
Score: Kevin Beasley



RALPH LEMON (American, born 1952)  
*Spaceman Drawings*  
2008-2010  
Ink on paper  
Each: 4 1/2 × 6 3/4" (11.4 × 17.1 cm)



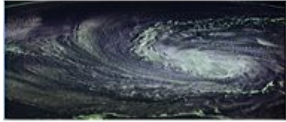
RALPH LEMON (American, born 1952)  
*(Solaris no people)*  
2008  
Video (color, sound)  
22 min., 45 sec.

**Ceremonies Out of the Air: Ralph Lemon**

MoMA PS1, November 14, 2024 - March 24, 2025



RALPH LEMON (American, born 1952)  
*Spaceship #1*  
2007  
Mixed media  
75 × 66 × 84" (190.5 × 167.6 × 213.4 cm)  
Production: Lloyd Williams, Warren (Red) Carter



RALPH LEMON (American, born 1952)  
*(Solaris water)*  
2024  
Video (color, silent)  
8 min., 13 sec.

**Ceremonies Out of the Air: Ralph Lemon**

MoMA PS1, November 14, 2024 - March 24, 2025

**Gallery 09**



RALPH LEMON (American, born 1952)

*Godhead under the kitchen table*

2024

Aluminum, steel, LEDs, electrical wiring, and cable

table: 30 × 90 × 30" (76.2 × 228.6 × 76.2 cm)

Production: Roderick Murray, RED, 618 Design



RALPH LEMON (American, born 1952)

*Hippo head*

2024

Bronze

8 1/2 × 13 × 6" (21.6 × 33 × 15.2 cm)

Production: Legacy Atelier



RALPH LEMON (American, born 1952)

*Hamburger and plate*

2024

Bronze

Part: 7/8 × 9 × 9" (2.2 × 22.9 × 22.9 cm)

Part: 1 1/4 × 3 3/4 × 3" (3.2 × 9.5 × 7.6 cm)

Production: Legacy Atelier



RALPH LEMON (American, born 1952)

*Untitled*

2018

Archival pigment print

Framed: 18 1/2 × 30 1/2 × 1 1/2" (47 × 77.5 × 3.8 cm)