

Lillie P. Bliss and the Birth of the Modern

The Museum of Modern Art, New York November 17, 2024-March 29, 2025
11w53, On View, 2nd Floor, South Gallery

Gallery 1



Bliss family photograph, likely of Lillie P. Bliss

undated

Albumen silver print

6 7/16 × 4 3/16" (16.4 × 10.6 cm)

Rona Roob Papers, II.C.104. The Museum of Modern Art Archives, New York



Bliss family photograph, likely of Lillie P. Bliss

undated

Albumen silver print

4 × 2 7/16" (10.2 × 6.2 cm)

Rona Roob Papers, II.C.104. The Museum of Modern Art Archives, New York



Page from the Lillie P. Bliss Scrapbook with two installation views of Bliss's art collection in her apartment at 1001 Park Avenue

c. 1925–1934

18 × 13" (45.7 × 33 cm)

Lillie P. Bliss Scrapbook. The Museum of Modern Art Archives, New York



Page from the Lillie P. Bliss Scrapbook with two installation views of Bliss's art collection in her apartment at 1001 Park Avenue

c. 1925-1934
18 × 13" (45.7 × 33 cm)

Lillie P. Bliss Scrapbook. The Museum of Modern Art Archives, New York



Catalogue for the exhibition "The Lillie P. Bliss Collection, 1934" [MoMA Exh. #34b, May 14-September 12, 1934]

1934
Cover: 10 × 7 1/2" (25.4 × 19.1 cm)

The Museum of Modern Art Library, New York



Lillie P. Bliss's commonplace book
undated

Cover: 7 7/8 × 6 3/8" (20 × 16.2 cm)

Rona Roob Papers, II.C.103*. The Museum of Modern Art Archives, New York



The Art Work of Louis C. Tiffany

1912
Cover: 12 5/8 × 9 7/8" (32.1 × 25.1 cm)

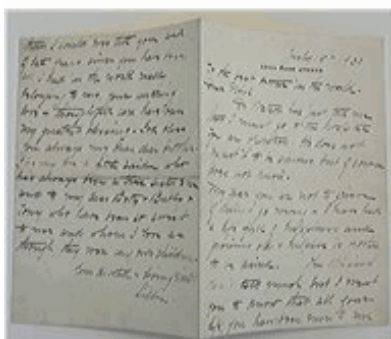
The Museum of Modern Art Library, New York



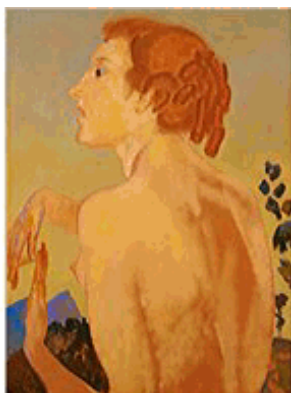
Lillie P. Bliss
 c. 1924
 Gelatin silver print
 Rona Roob Papers, II.C.3. The Museum of Modern Art Archives, New York



Letter to Robert W. de Forest from Lillie P. Bliss, Gertrude Whitney, et al.
 January 26, 1921
 Lent by The Metropolitan Museum of Art, Office of the Secretary Records, The Metropolitan Museum of Art Archives (Archives.018)



Letter from Lillie P. Bliss to her brother, Cornelius Newton Bliss, Jr., having heard that she needs to go to the hospital for an operation
 July 15, 1930
 7 3/4 x 10 5/8" (19.7 x 27 cm)
 Rona Roob Papers, II.C.54. The Museum of Modern Art Archives, New York



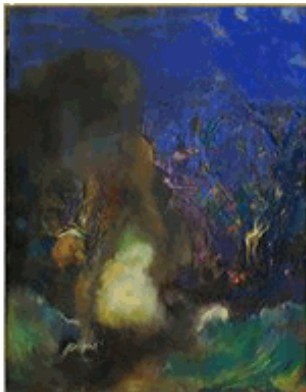
ARTHUR B. DAVIES (American, 1862–1928)
The Wine Press
 1918
 Oil on canvas
 32 1/4 x 24 1/4" (81.9 x 61.6 cm)
 The Museum of Modern Art, New York. Lillie P. Bliss Collection



ARTHUR B. DAVIES (American, 1862–1928)
Italian Landscape
1925
Oil on canvas
26 1/8 x 40 1/8" (66.4 x 101.9 cm)
The Museum of Modern Art, New York. Lillie P. Bliss Collection



ODILON REDON (French, 1840–1916)
Day (Le Jour) from Dreams (Songes)
1891
One from a portfolio of six lithographs on chine appliqué
composition: 8 1/4 x 6 1/8" (20.9 x 15.5 cm); sheet: 17 3/16 x 12 3/16" (43.6 x 30.9 cm)
The Museum of Modern Art, New York. Lillie P. Bliss Collection



ODILON REDON (French, 1840–1916)
Roger and Angelica
c. 1910
Pastel on paper on canvas
36 1/2 x 28 3/4" (92.7 x 73 cm)
The Museum of Modern Art, New York. Lillie P. Bliss Collection



ODILON REDON (French, 1840–1916)
Silence
c. 1911
Oil on prepared paper
21 1/2 x 21 1/4" (54.6 x 54 cm)
The Museum of Modern Art, New York. Lillie P. Bliss Collection



UNIDENTIFIED DESIGNER (Coptic)

Child with Bird

3rd century C.E.

Coptic textile

15 x 16 1/4" (38.1 x 41.3 cm)

The Museum of Modern Art, New York. Lillie P. Bliss Collection



UNIDENTIFIED DESIGNER (Coptic)

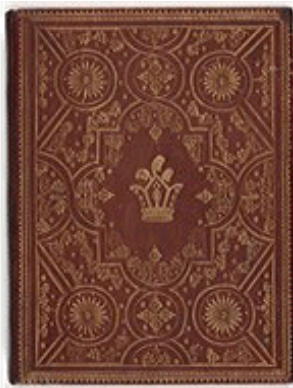
Roundel fragment with water fowl

4th-6th century C.E.

Wool and linen

8 x 10 3/4" (20.3 x 27.3 cm)

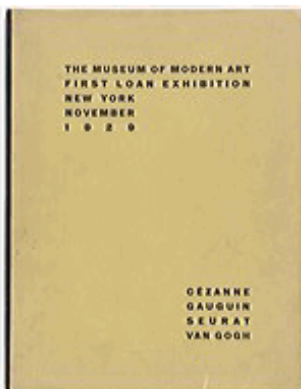
The Museum of Modern Art, New York. Lillie P. Bliss Collection



The Museum of Modern Art Guest Book
1929–1944

Cover: 11 11/16 × 8 7/8" (29.7 × 22.5 cm)

Museum Guest Book 1929-1944. The Museum of Modern Art Archives, New York



Catalogue for the exhibition "Cézanne, Gauguin, Seurat, Van Gogh" [MoMA Exh. #1, November 7-December 7, 1929]

1929

Cover: 11 × 8 1/2" (27.9 × 21.6 cm)

Publications Archive. The Museum of Modern Art Archives, New York



"The Museum of Modern Art: A New Institution for New York" membership solicitation signed by the seven founding Trustees

1929

11 3/8 × 8" (28.9 × 20.3 cm)

Reports and Pamphlets, 1.16. The Museum of Modern Art Archives, New York



PAUL CÉZANNE (French, 1839–1906)

Antoine Dominique Sauveur Aubert (born 1817), the Artist's Uncle

1866

Oil on canvas

31 3/8 x 25 1/4" (79.7 x 64.1 cm)

Lent by The Metropolitan Museum of Art, New York, Wolfe Fund, 1951; acquired from The Museum of Modern Art, Lillie P. Bliss Collection. (53.140.1)



PAUL CÉZANNE (French, 1839–1906)
Bathers
c. 1885-1890
Watercolor and pencil on paper
5 x 8 1/8" (12.7 x 20.6 cm)
The Museum of Modern Art, New York. Lillie P. Bliss Collection



PAUL CÉZANNE (French, 1839–1906)
The Bather
c. 1885
Oil on canvas
50 x 38 1/8" (127 x 96.8 cm)
The Museum of Modern Art, New York. Lillie P. Bliss Collection



PAUL CÉZANNE (French, 1839–1906)
Foliage (recto); Study of Trees (verso)
1895
Watercolor and pencil on paper (recto and verso)
17 5/8 x 22 3/8" (44.8 x 56.8 cm)
The Museum of Modern Art, New York. Lillie P. Bliss Collection



PAUL CÉZANNE (French, 1839–1906)
Rocks Near the Caves above Château Noir
1895–1900
Watercolor and pencil on paper
12 1/2 x 18 3/4" (31.7 x 47.5 cm)
The Museum of Modern Art, New York. Lillie P. Bliss Collection



PAUL CÉZANNE (French, 1839–1906)
Still Life with Apples
1895-98
Oil on canvas
27 x 36 1/2" (68.6 x 92.7 cm)
The Museum of Modern Art, New York. Lillie P. Bliss Collection



PAUL CÉZANNE (French, 1839–1906)
Pines and Rocks (Fontainebleau?)
c. 1897
Oil on canvas
32 x 25 3/4" (81.3 x 65.4 cm)
The Museum of Modern Art, New York. Lillie P. Bliss Collection



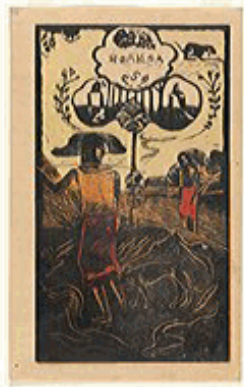
PAUL CÉZANNE (French, 1839–1906)
Still Life with Ginger Jar, Sugar Bowl, and Oranges
1902-06
Oil on canvas
23 7/8 x 28 7/8" (60.6 x 73.3 cm)
The Museum of Modern Art, New York. Lillie P. Bliss Collection



A. Conger Goodyear Scrapbooks, Volume 1, "Museum of Modern Art 1929"
c. 1930
Cradled: 11 1/4 x 15 x 4" (28.6 x 38.1 x 10.2 cm)
A. Conger Goodyear Scrapbooks, 1. The Museum of Modern Art Archives, New York



PAUL GAUGUIN (French, 1848–1903)
Maruru (Offerings of Gratitude)
1893–94, printed 1921
Wood engraving
composition: 8 1/16 x 14" (20.5 x 35.5 cm); sheet: 10 9/16 x 16 7/8" (26.8 x 42.8 cm)
The Museum of Modern Art, New York. Lillie P. Bliss Collection



PAUL GAUGUIN (French, 1848–1903)
Noa Noa (Fragrant Scents), state III/III, from the suite Noa Noa (Fragrant Scents)
1893–94
Woodcut
composition: 14 x 8 1/16" (35.5 x 20.5 cm); sheet: 15 1/2 x 9 5/8" (39.3 x 24.4 cm)
The Museum of Modern Art, New York. Lillie P. Bliss Collection



PAUL GAUGUIN (French, 1848–1903)
Te atua (The Gods), state III/III, from the suite Noa Noa (Fragrant Scents)
1893–94
Woodcut
composition: 8 1/16 x 14" (20.5 x 35.5 cm); sheet: 15 9/16 x 9 3/4" (39.6 x 24.7 cm)
The Museum of Modern Art, New York. Lillie P. Bliss Collection



PAUL GAUGUIN (French, 1848–1903)
Auti te Pape (Women at the River) from Noa Noa (Fragrant Scents)
1894, printed 1921
One from a series of eight woodcuts
composition: 8 1/16 x 13 15/16" (20.5 x 35.4 cm); sheet: 10 5/8 x 16 5/8" (27 x 42.2 cm)
The Museum of Modern Art, New York. Lillie P. Bliss Collection



PAUL GAUGUIN (French, 1848–1903)
L'Univers est crée (The Creation of the Universe)
1894, printed 1921
Woodcut
composition: 8 1/16 x 13 7/8" (20.4 x 35.3 cm); sheet: 10 1/2 x 16 13/16" (26.7 x 42.7 cm)
The Museum of Modern Art, New York. Lillie P. Bliss Collection



PAUL GAUGUIN (French, 1848–1903)
Te Po (Night Eternal)
1894, printed 1921
Woodcut
composition: 8 1/16 x 14 1/16" (20.5 x 35.7 cm); sheet: 10 5/8 x 16 7/8" (27 x 42.8 cm)
The Museum of Modern Art, New York. Lillie P. Bliss Collection

John D. Rockefeller Jr. Diary
1929
Box 42, Folder 376, Personal Papers, John D. Rockefeller Jr. Papers,
Rockefeller Archive Center, Sleepy Hollow, New York.



GEORGES-PIERRE SEURAT (French, 1859–1891)
Stone Breaker, Le Raincy (Casseur de pierres, Le Raincy)
c. 1879–81
Conté crayon and graphite on paper
12 1/8 x 14 3/4" (30.8 x 37.5 cm)
The Museum of Modern Art, New York. Lillie P. Bliss Collection



GEORGES-PIERRE SEURAT (French, 1859–1891)

House at Dusk (La Cité)

1881–82

Conté crayon

12 3/16 × 9 3/8" (30.9 × 23.8 cm)

Lent by The Metropolitan Museum of Art, Purchase, Joseph Pulitzer Bequest, 1951; acquired from The Museum of Modern Art, Lillie P. Bliss Collection (55.21.5)



GEORGES-PIERRE SEURAT (French, 1859–1891)

A Woman Fishing

1884

Conté crayon

Sheet: 12 1/8 × 9 3/8" (30.8 × 23.8 cm)

Lent by The Metropolitan Museum of Art, Purchase, Joseph Pulitzer Bequest, 1951; acquired from The Museum of Modern Art, Lillie P. Bliss Collection (55.21.4)



GEORGES-PIERRE SEURAT (French, 1859–1891)

At the Concert Européen (Au Concert Européen)

c. 1886–88

Conté crayon and gouache on paper

12 1/4 × 9 3/8" (31.1 × 23.8 cm)

The Museum of Modern Art, New York. Lillie P. Bliss Collection



GEORGES-PIERRE SEURAT (French, 1859–1891)

Port-en-Bessin, Entrance to the Harbor

1888

Oil on canvas

21 5/8 × 25 5/8" (54.9 × 65.1 cm)

The Museum of Modern Art, New York. Lillie P. Bliss Collection



VINCENT VAN GOGH (Dutch, 1853–1890)

The Starry Night

Saint Rémy, June 1889

Oil on canvas

29 x 36 1/4" (73.7 x 92.1 cm)

The Museum of Modern Art, New York. Acquired through the Lillie P. Bliss Bequest (by exchange)



Page from the Lillie P. Bliss Scrapbook with 1931 press clippings regarding Bliss's death and memorial exhibition

c. 1925–1934
18 × 13" (45.7 × 33 cm)

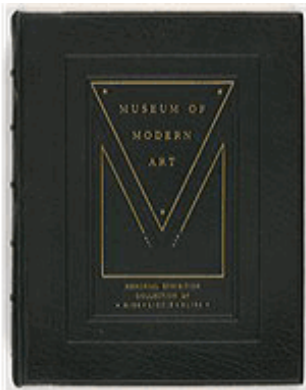
Lillie P. Bliss Scrapbook. The Museum of Modern Art Archives, New York



Catalogue for the exhibition "The Lillie P. Bliss Collection, 1934" [MoMA Exh. #34b, May 14–September 12, 1934]

1934
Cover: 10 × 7 1/2" (25.4 × 19.1 cm)

Publications Archive. The Museum of Modern Art Archives, New York



A. Conger Goodyear Scrapbooks, Volume 10, "Miss Lillie Bliss Memorial Exhibition 1931-1932"

1931–1932
Cover: 11 1/8 × 8 1/2" (28.3 × 21.6 cm)

A. Conger Goodyear Scrapbooks, 10. The Museum of Modern Art Archives, New York



Clipping from cover page of New York Herald Tribune, Vol. XCIII, no. 31,894, with article "Modern Museum Wins Bliss Art By Completing \$600,000 Fund" March 13, 1934

Alfred H. Barr, Jr. Papers, II.A.49*. The Museum of Modern Art Archives, New York



Clipping from page 18 of *New York Herald Tribune*, Vol. XCIII, no. 31,894, with second part of article "Modern Museum Wins Bliss Art By Completing \$600,000 Fund"

March 13, 1934

Alfred H. Barr, Jr. Papers, II.A.49*. The Museum of Modern Art Archives, New York



MARIE LAURENCIN (French, 1883–1956)

Girl's Head

1916–18

Watercolor, pencil, and crayon on paper

6 1/4 x 7" (15.9 x 17.8 cm)

The Museum of Modern Art, New York. Lillie P. Bliss Collection



HENRI MATISSE (French, 1869–1954)

Interior with a Violin Case

Nice, winter 1918-19

Oil on canvas

28 3/4 x 23 5/8" (73 x 60 cm)

The Museum of Modern Art, New York. Lillie P. Bliss Collection



AMEDEO MODIGLIANI (Italian, 1884–1920)

Anna Zborowska

1917

Oil on canvas

51 1/4 x 32" (130.2 x 81.3 cm)

The Museum of Modern Art, New York. Lillie P. Bliss Collection



PABLO PICASSO (Spanish, 1881–1973)
Head of a Woman, in Profile (Tête de femme, de profil) from the Saltimbanques series
1905
Drypoint
plate: 11 7/16 x 9 13/16" (29.1 x 25 cm); sheet: 18 3/16 x 12 5/8" (46.2 x 32.1 cm)
The Museum of Modern Art, New York. Lillie P. Bliss Collection



PABLO PICASSO (Spanish, 1881–1973)
Salomé from the Saltimbanques series
1905, published 1913
Drypoint
plate: 15 7/8 x 13 11/16" (40.3 x 34.7 cm); sheet: 25 5/16 x 20 1/16" (64.3 x 51 cm)
The Museum of Modern Art, New York. Lillie P. Bliss Collection



PABLO PICASSO (Spanish, 1881–1973)
Green Still Life
Avignon, summer 1914
Oil on canvas
23 1/2 x 31 1/4" (59.7 x 79.4 cm)
The Museum of Modern Art, New York. Lillie P. Bliss Collection



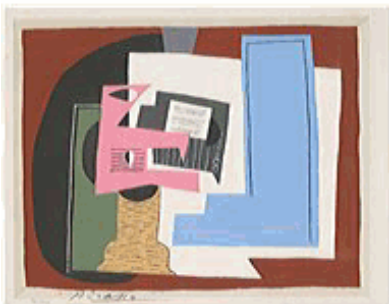
After PABLO PICASSO (Spanish, 1881–1973)
Pierrot and Brown Harlequin, Standing from the series Dix Pochoirs
published 1921
Pochoir
composition: 11 1/4 x 8 7/8" (28.5 x 22.6 cm); sheet: 12 1/8 x 9 1/2" (30.8 x 24.1 cm)
The Museum of Modern Art, New York. Lillie P. Bliss Collection



After PABLO PICASSO (Spanish, 1881–1973)
Pierrot and Harlequin, Seated from the series *Dix Pochoirs*
published 1921
Pochoir
composition: 8 1/4 x 10 1/2" (21 x 26.7 cm); sheet: 9 13/16 x 12 1/16" (24.9 x 30.6 cm)
The Museum of Modern Art, New York. Lillie P. Bliss Collection



After PABLO PICASSO (Spanish, 1881–1973)
Pierrot and Red Harlequin, Standing from the series *Dix Pochoirs*
published 1921
Pochoir
composition: 10 13/16 x 8 3/8" (27.5 x 21.3 cm); sheet: 12 x 9 3/8" (30.5 x 23.8 cm)
The Museum of Modern Art, New York. Lillie P. Bliss Collection



After PABLO PICASSO (Spanish, 1881–1973)
Still Life from the series *Dix Pochoirs*
published 1921
Pochoir
composition: 8 3/8 x 10 5/8" (21.3 x 27 cm); sheet: 8 7/8 x 11 7/16" (22.5 x 29.1 cm)
The Museum of Modern Art, New York. Lillie P. Bliss Collection



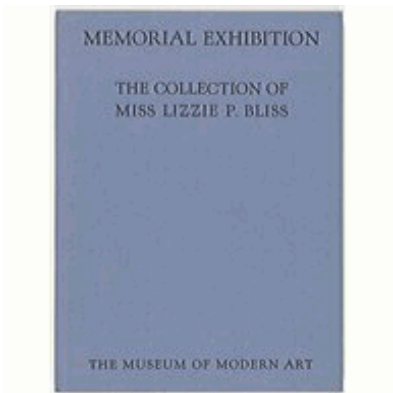
PABLO PICASSO (Spanish, 1881–1973)
Woman in White
1923
Oil, water-based paint, and crayon on canvas
39 x 31 1/2" (99.1 x 80 cm)
Lent by The Metropolitan Museum of Art, New York, Rogers Fund, 1951;
acquired from The Museum of Modern Art, Lillie P. Bliss Collection (53.140.4)



Letter from Abby Aldrich Rockefeller to Cornelius Newton Bliss, Jr. regarding Lillie P. Bliss's bequest

April 20, 1931
7 11/16 × 11 13/16" (19.5 × 30 cm)

Lillie P. Bliss Scrapbook. The Museum of Modern Art Archives, New York



Catalogue for the exhibition "Memorial Exhibition: The Collection of the Late Lillie P. Bliss" [MoMA Exh. #12, May 17–October 6, 1931]

1931
Cover: 10 × 7 1/2" (25.4 × 19.1 cm)

Publications Archive. The Museum of Modern Art Archives, New York



Announcement of the acquisition of "The Starry Night" (1889) by Vincent van Gogh

1941
Cover: 9 × 6" (22.9 × 15.2 cm)

The Museum of Modern Art Exhibition Records, 149.2. The Museum of Modern Art Archives, New York