

# The Museum of Modern Art

## The Many Lives of the Nakagin Capsule Tower. Checklist

### The Many Lives of the Nakagin Capsule Tower

The Museum of Modern Art, New York, July 10, 2025 - July 12, 2026

#### 1- From the Age of the Machine to the Age of Life



TOSHI ICHIYANAGI (Japanese, 1933–2022)

*"Capsule, Metabolism, Spaceframe, Metamorphose," "Music for Living Space" vinyl record in slipcase*

1970

Slipcase: 7 × 7" (17.8 × 17.8 cm)

The Museum of Modern Art Library, New York



KISHO KUROKAWA (Japanese, 1934–2007)

*Helix City Project, Tokyo, Japan*

1961

Plan

Cut-and-pasted gelatin silver photographs and ink on cut-and-pasted tracing paper on paper

21 1/2 × 17 1/2" (54.6 × 44.5 cm)

Gift of the architect



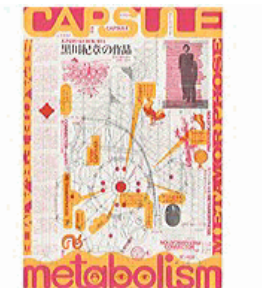
KISHO KUROKAWA (Japanese, 1934–2007)

*Takara Group Pavilion, Expo '70*

1968–1970

Gelatin silver print

Photo: The Japan Architect



KISHO KUROKAWA (Japanese, 1934–2007)

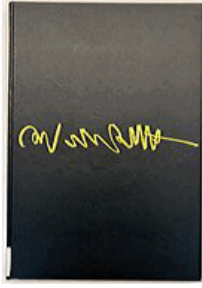
*Capsule: Metabolism, Spaceframe, Metamorphose*

1970

Book and screenprint

40 3/16 × 28 9/16" (102 × 72.5 cm)

The Museum of Modern Art Library, New York



KISHO KUROKAWA (Japanese, 1934–2007)

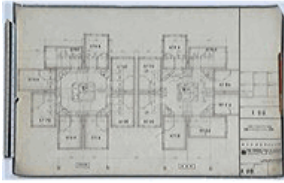
*"Capsule, Metabolism, Spaceframe, Metamorphose," book*  
1970

Cover: 14 9/16 × 10 5/16" (37 × 26.2 cm)

Spread: 14 9/16 × 20 15/16" (37 × 53.2 cm)

The Museum of Modern Art Library, New York

## 2- An Experiment in Urban Living



KISHO KUROKAWA (Japanese, 1934–2007)  
KISHO KUROKAWA ARCHITECT & ASSOCIATES (est. 1962)  
*Nakagin Capsule Tower. Sections*  
Drawing on transparent paper  
16 9/16 × 24 13/16" (42 × 63 cm)



KISHO KUROKAWA (Japanese, 1934–2007)  
*Nakagin Capsule Tower*  
1968–1972  
Model, 1971  
Cherry wood and brass  
27 9/16 × 47 1/4 × 27 9/16" (70 × 120 × 70 cm)  
Courtesy Centre Pompidou. Musée National d'Art Moderne / Centre de  
Création Industrielle



KISHO KUROKAWA (Japanese, 1934–2007)  
MITSUO MATSUOKA  
*Nakagin Capsule Tower Hotel, Tokyo, Japan*  
1970–1972  
Gelatin silver print  
9 7/8 × 7 1/2" (25.1 × 19.1 cm)  
Architecture & Design Study Center



KISHO KUROKAWA (Japanese, 1934–2007)  
TOMIO OHASHI (Japanese, 1932 – 2017)  
*Nakagin Capsule Tower Hotel, Tokyo, Japan*  
1970–1972  
Gelatin silver print  
9 3/4 × 7 3/4" (24.8 × 19.7 cm)  
Architecture & Design Study Center



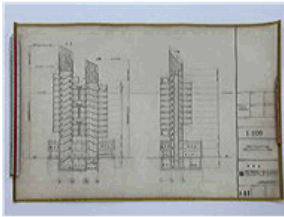
KISHO KUROKAWA (Japanese, 1934–2007)  
TOMIO OHASHI (Japanese, 1932 – 2017)  
*Nakagin Capsule Tower Hotel, Tokyo, Japan*  
1970–1972  
Gelatin silver print  
9 3/4 × 7 3/4" (24.8 × 19.7 cm)  
Architecture & Design Study Center



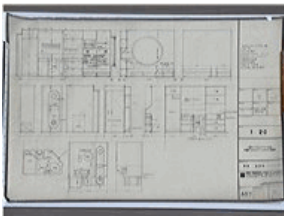
KISHO KUROKAWA (Japanese, 1934–2007)  
 KISHO KUROKAWA ARCHITECT & ASSOCIATES (est. 1962)  
*Nakagin Capsule Tower. Signage design*  
 1970  
 Drawing on transparent paper  
 16 9/16 × 24 13/16" (42 × 63 cm)



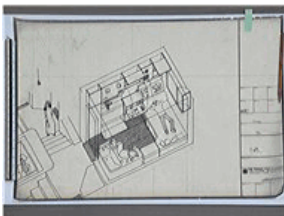
KISHO KUROKAWA (Japanese, 1934–2007)  
 KISHO KUROKAWA ARCHITECT & ASSOCIATES (est. 1962)  
*Nakagin Capsule Tower. Elevations*  
 1970–1972  
 Drawing on transparent paper  
 16 9/16 × 24 13/16" (42 × 63 cm)



KISHO KUROKAWA (Japanese, 1934–2007)  
 KISHO KUROKAWA ARCHITECT & ASSOCIATES (est. 1962)  
*Nakagin Capsule Tower. Sections*  
 1970  
 Drawing on transparent paper  
 16 9/16 × 24 13/16" (42 × 63 cm)



KISHO KUROKAWA (Japanese, 1934–2007)  
 KISHO KUROKAWA ARCHITECT & ASSOCIATES (est. 1962)  
*Nakagin Capsule Tower. Sections*  
 1970  
 Drawing on transparent paper  
 16 9/16 × 24 13/16" (42 × 63 cm)



KISHO KUROKAWA (Japanese, 1934–2007)  
 KISHO KUROKAWA ARCHITECT & ASSOCIATES (est. 1962)  
*Nakagin Capsule Tower. Axonometric*  
 1970  
 Drawing on transparent paper  
 16 9/16 × 24 13/16" (42 × 63 cm)



TOMIO OHASHI (Japanese, 1932 – 2017)

*Kisho Kurokawa, Nakagin Capsule Tower (exterior perspective) [image 1/21, digital file]*

1972

Digital scan of color photograph for wallpaper

### 3- Business Capsule Fantasies



*Nakagin Business Capsule sales postcard*

Print

6 × 4 1/4" (15.2 × 10.8 cm)

Purchase



*Business Capsule User Manual*

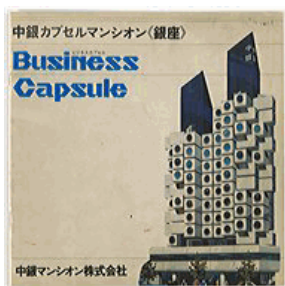
Printed ephemera (brochure)

10 1/16 × 10 1/16" (25.6 × 25.6 cm)



*"A 21st Century Home that Thoroughly Pursues Functionality: Nakagin Capsule Manshon (Ginza)," promotional brochure by the Nakagin Company, after March 1971*

Printed ephemera

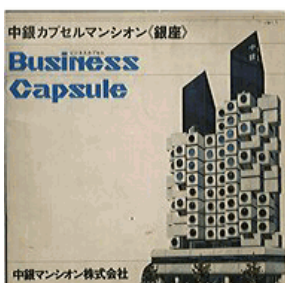


KISHO KUROKAWA (Japanese, 1934–2007)

*Brochure for the Nakagin Capsule Tower*

Fascimille of the original brochure, printed c. 2023-24 for pageturner

10 1/8 × 10 1/8" (25.7 × 25.7 cm)



KISHO KUROKAWA (Japanese, 1934–2007)

*Brochure for the Nakagin Capsule Tower*

1972

Printed ephemera

10 1/8 × 10 1/8" (25.7 × 25.7 cm)



TSUTSUMI TESTSURO (Japanese)  
*Nakagin Capsule Tower [Capsule Mansion]*  
1972  
Video (color, sound) 7:51 min  
(c) Taisei Corporation

## 4- The Birth of the Capsule Hotel



KISHO KUROKAWA ARCHITECT & ASSOCIATES (est. 1962)  
*Capsule Inn Osaka*  
Digital scan of brochure for C-print



KISHO KUROKAWA ARCHITECT & ASSOCIATES (est. 1962)  
*Capsule Inn Osaka*  
1979  
Digital scan of drawing on paper for C-print



KISHO KUROKAWA ARCHITECT & ASSOCIATES (est. 1962)  
TOMIO OHASHI (Japanese, 1932 – 2017)  
*Capsule Inn Osaka*  
1979  
Digital scan of gelatin silver print



## 5- An Architecture in Continous Transformation



NORITAKA MINAMI (American, born Japan, born 1981)  
*Facade I*  
2011  
Inkjet print  
40 × 50" (101.6 × 127 cm)  
Gift of the artist



NORITAKA MINAMI (American, born Japan, born 1981)  
*B1004 I*  
2011  
Inkjet print  
20 × 25" (50.8 × 63.5 cm)  
Gift of the artist



NORITAKA MINAMI (American, born Japan, born 1981)  
*B1004 II*  
2011  
Inkjet print  
20 × 25" (50.8 × 63.5 cm)  
Gift of the artist



NORITAKA MINAMI (American, born Japan, born 1981)  
*A703 I*  
2012  
Inkjet print  
20 × 25" (50.8 × 63.5 cm)  
Gift of the artist



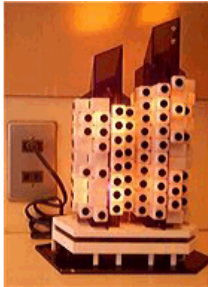
NORITAKA MINAMI (American, born Japan, born 1981)  
*A703 II*  
2012  
Inkjet print  
20 × 25" (50.8 × 63.5 cm)  
Gift of the artist



NORITAKA MINAMI (American, born Japan, born 1981)  
*A503 I*  
 2017  
 Inkjet print  
 20 × 25" (50.8 × 63.5 cm)  
 Gift of the artist



NORITAKA MINAMI (American, born Japan, born 1981)  
*A503 II*  
 2017  
 Inkjet print  
 20 × 25" (50.8 × 63.5 cm)  
 Gift of the artist



NAKAGIN COMPANY  
*Nakagin Capsule Tower Model Lamp*  
 c. 1972  
 Lamp, wired. Plastic and metal components (TBD)  
 10 7/8 × 6 7/8 × 5 1/2" (27.6 × 17.5 × 14 cm)  
 Gift of Takayuki Sekine



TOMIO OHASHI (Japanese, 1932 – 2017)  
*Kisho Kurokawa, Nakagin Capsule Tower (Kurokawa outside of building)*  
*[image 7/21, digital file]*  
 1972  
 Digital scan of gelatin silver print for C-print

## 6- A Living Archive



NOBUO ABE  
*Nakagin Tower building signage*  
Metal (tbd)  
5 7/8 × 66 15/16" (15 × 170 cm)



NORITAKA MINAMI (American, born Japan, born 1981)  
*Remnants*  
2022  
Inkjet print  
40 × 50" (101.6 × 127 cm)  
Gift of the artist



THE MUSEUM OF MODERN ART, NEW YORK  
*Nakagin capsule tower 360*  
2024  
360 video



NAKAGIN CAPSULE TOWER PRESERVATION AND RESTORATION  
PROJECT  
*Nakagin Capsule Style. 20 Stories*  
2020  
5 videos, single-channel (color, sound)



ARCHI HATCH / YUTA TOKUNAGA (Japanese, born 1980)  
*Nakagin 3D Archive*  
2022  
360 digital photogrammetry

## 7- MoMA Capsule



YUSAKU KAMEKURA (Japanese, 1915–1997)

OSAMU HAYASKI

TAKESHI OTAKA

*Expo '70, Osaka, Japan*

1969

Screen print and lithograph

40 1/2 × 28 5/8" (102.9 × 72.7 cm)



KISHO KUROKAWA ARCHITECT & ASSOCIATES (est. 1962)

KISHO KUROKAWA (Japanese, 1934–2007)

NOBUO ABE

AIKO MOGI

KOJI SHIMOSAWA

KENJIRO UEDA

GENGO MATSUI

*Capsule A1305 from the Nakagin Capsule Tower Building, Tokyo, Japan*

1970–1972, restored 2022–2023

Steel, wood, paint, plastics, cloth, polyurethane, glass, ceramic, and electronics

.a - capsule: 100 3/8 × 106 5/16 × 166 9/16" (255 × 270 × 423 cm)

Component (.b - television): 13 7/8 × 17 × 14 1/4" (35.2 × 43.2 × 36.2 cm)

Component (.c - refrigerator): 30 1/2 × 21 7/8 × 12 1/2" (77.5 × 55.6 × 31.8 cm)

Component (.d - stool): 14 × 18 1/8 × 18 3/4" (35.6 × 46 × 47.6 cm)

Component (.e - vent): 10 5/8 × 38 × 1" (27 × 96.5 × 2.5 cm)

Component (.f - faucet): 6 3/4 × 3 1/4 × 4" (17.1 × 8.3 × 10.2 cm)

Component (.M12 - cabinet frame, tv cover): 15 3/4 × 24 1/8 × 1 3/8" (40 × 61.3 × 3.5 cm)

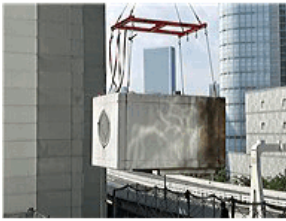
Gift of Jo Carole and Ronald S. Lauder, Alice and Tom Tisch, and the Nakagin Capsule Tower Preservation and Restoration Project, Tokyo, Japan

## Misc- Image labels



*Interior views of the “coral” red and orange stairway in Tower A, and “peacock” blue and turquoise in Tower B, 1972.*

1972  
Detail. Digital scan of promotional brochure

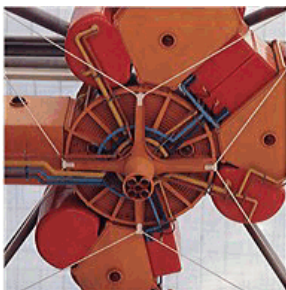


TATSUYUKI MAEDA

*De-assembling the Nakagin Capsule Tower*

2022

Digital Photograph



TOMIO OHASHI (Japanese, 1932 – 2017)

KISHO KUROKAWA (Japanese, 1934–2007)

*Capsule House at Osaka'70*

1970

Scan of color photograph



JEREMIE SOUTEYRAT (French, born 1979)

*Nakagin Capsule Tower*

2016

Digital photograph



JEREMIE SOUTEYRAT (French, born 1979)

*Nakagin Capsule Tower*

2016

Digital photograph for wallpaper